

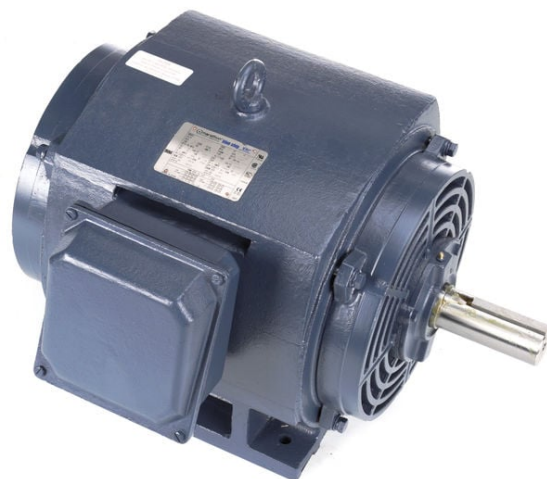
# PRODUCT INFORMATION PACKET

**marathon®**  
Motors

Model No: 326TTDC6026

Catalog No: U777

XRI® General Purpose General Purpose Motor, 50 & 50 HP, 3 Ph, 60 & 50 Hz, 208-230/460 & 200/400 V,  
1800 & 1500 RPM, 326T Frame, DP



Regal and Marathon are trademarks of Regal Rexnord Corporation or one of its affiliated companies.

©2023 Regal Rexnord Corporation, All Rights Reserved. MC017097E

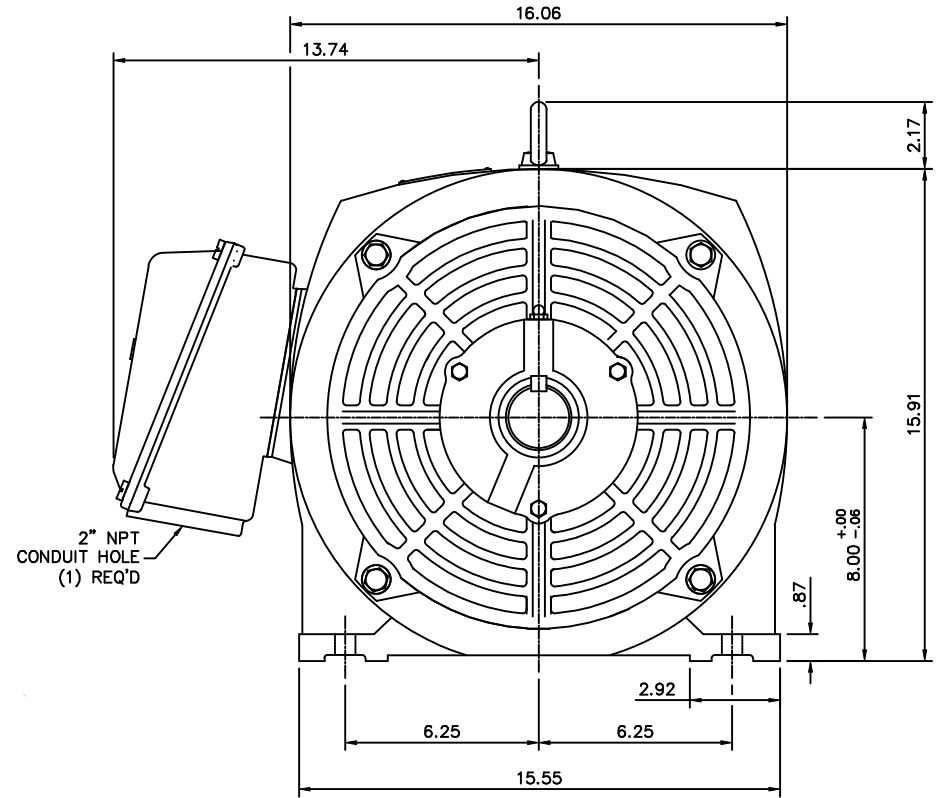
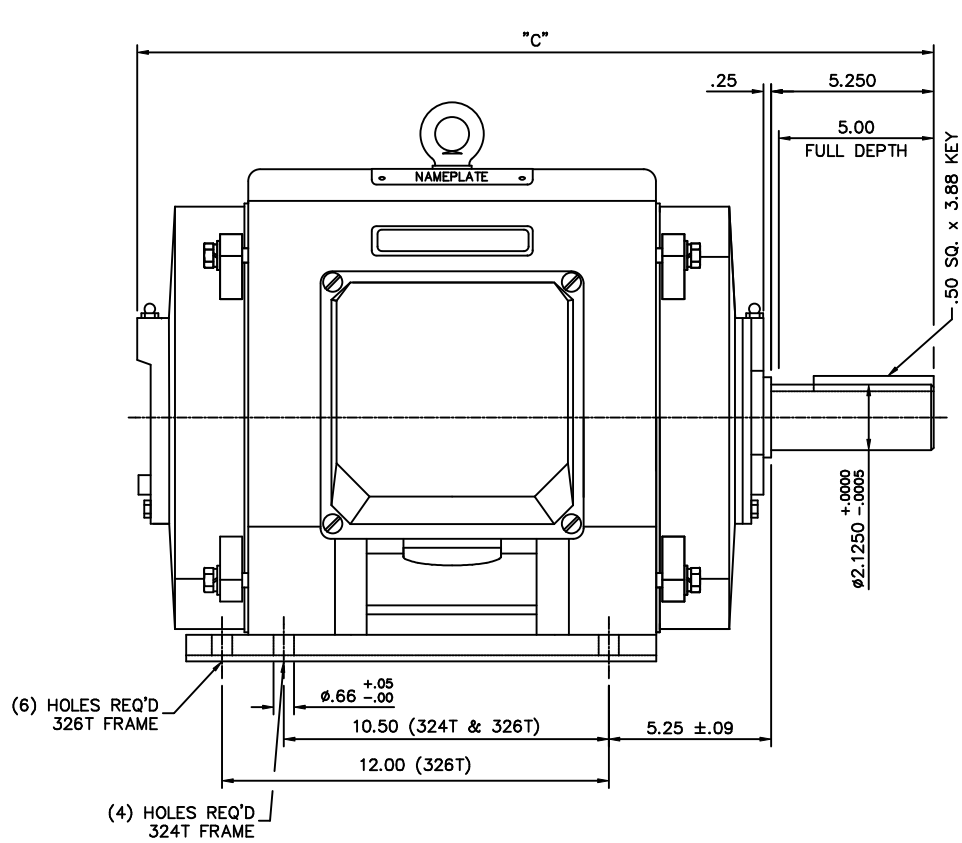
**RegalRexnord**

### Nameplate Specifications


Phase	3	Output HP	50 & 50 Hp
Output KW	37.0 & 37.0 kW	Voltage	208-230/460 & 200/400 V
Speed	1780 & 1475 rpm	Service Factor	1.15 & 1.0
Frame	326T	Enclosure	Drip Proof
Thermal Protection	No Protection	Efficiency	94.5 & 93.6 %
Ambient Temperature	40 °C	Frequency	60 & 50 Hz
Current	130-118/59 & 133/66.5 A	Power Factor	84
Duty	Continuous	Insulation Class	F
Design Code	B	KVA Code	G
Drive End Bearing Size	6312	Opp Drive End Bearing Size	6312
UL	Recognized	CSA	Y
CE	Y	IP Code	12
Number of Speeds	1		

### Technical Specifications

Electrical Type	Squirrel Cage Inverter Rated	Starting Method	Wye Start Delta Run Or Inverter
Poles	4	Rotation	Reversible
Resistance Main	.133 Ohms	Mounting	Rigid Base
Motor Orientation	Horizontal	Drive End Bearing	Ball
Opp Drive End Bearing	Ball	Frame Material	Cast Iron
Shaft Type	T	Overall Length	27.52 in
Shaft Diameter	2.125 in	Shaft Extension	5.25 in
Assembly/Box Mounting	F1 ONLY		
Connection Drawing	004172-01ME	Outline Drawing	16955460ME



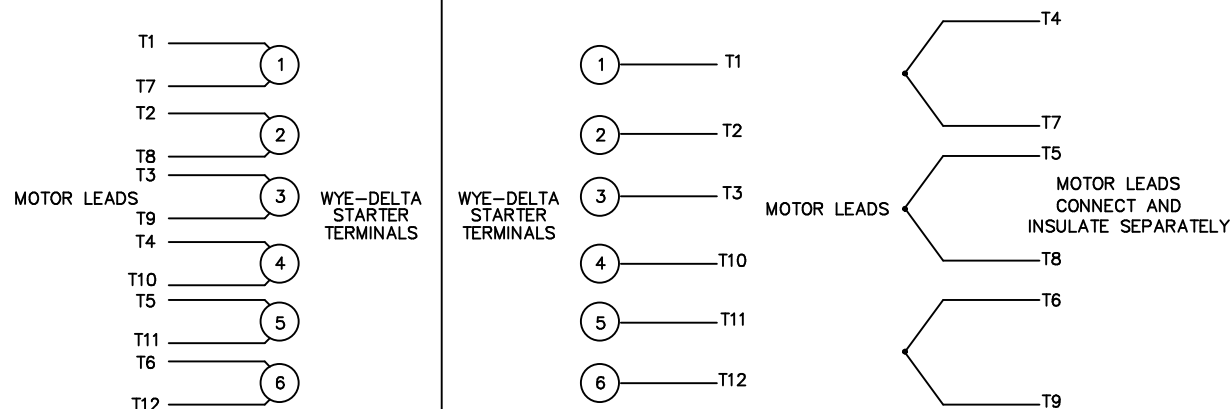
FRAME DESIGN	"C"
324T	26.02
326T	27.52

		TOLERANCES UNLESS SPECIFIED			DRAWN CTO 04-25-2002	
		DEC.	INCHES		CHK	ML 05-20-2002
		.X	±.1	TITLE OUTLINE 320T FRAME DRIP PROOF - RIGID	APPD	SB 05-21-2002
		.XX	±.03		SCALE	1=1
		.XXX	±.005		REF	
1	NEW DRAWING	CTO 05/21/02	.XXXX ±.0005	MAT'L CAST IRON	FMF	
NO.	REVISION	BY & DATE	CHK ANG ±1/2"	FINISH	PREV	
THIS DRAWING IN DESIGN AND DETAIL IS OUR PROPERTY AND MUST NOT BE USED EXCEPT IN CONNECTION WITH OUR WORK ALL RIGHTS OF DESIGN AND INVENTION ARE RESERVED THIS IS AN ELECTRONICALLY GENERATED DOCUMENT - DO NOT SCALE THIS PRINT				RFP	CAD FILE 16955460me	SIZE B
				DIST	DRAWING NO. 169554-60ME	REV. 1

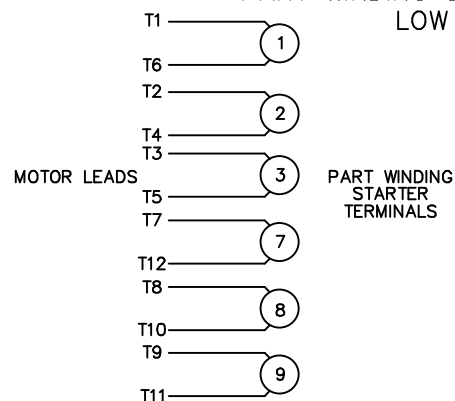
## WYE - DELTA STARTING USEABLE ON 2, 4 AND 6 POLE MOTORS.

## LOW VOLTAGE CONNECTION

## HIGH VOLTAGE CONNECTION



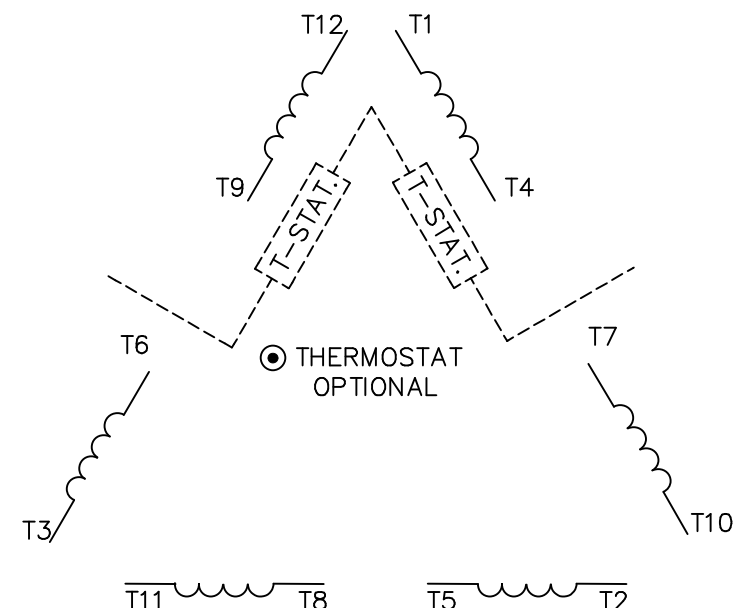
REFER TO THE WYE-DELTA STARTER CONNECTION INSTRUCTIONS FOR PROPER CONNECTION OF POWER LINES TO STARTER.

PART WINDING START USABLE ON 4 & 6 POLE MOTORS  
LOW VOLTAGE CONNECTION ONLY

REFER TO THE PART WINDING STARTER INSTRUCTIONS FOR PROPER CONNECTION OF POWER LINES TO STARTER.

REFER TO THE CUTLER-HAMMER OR EQUIV. FOR PROPER SELECTION OF OVERLOAD HEATER COILS.

## LINE LEADS



ROTATION CAN BE REVERSED BY INTERCHANGING ANY TWO LINE LEADS

● RED LEADS OR P1, P2, FOR N/C THERMOSTAT

## ACROSS THE LINE START &amp; RUN

	LINE 1	LINE 2	LINE 3	JOIN & INSULATE SEPARATELY
HIGH VOLT	T1,T12	T2,T10	T3,T11	(T4,T7) (T5,T8) (T6,T9)
LOW VOLT	T1,T6 T7,T12	T2,T4 T8,T10	T3,T5 T9,T11	

TOLERANCES  
UNLESS SPECIFIED

DEC. INCHES

.X ±.1

.XX ±.02

.XXX ±.005

.XXXX ±.0005

ANG ±7'30"



TITLE DELTA - WYE CONNECTION DIAGRAM

MAT'L.

FINISH

DRAWN RJW 07-19-2007

CHK ML 07-19-2007

APPD GK 07-19-2007

SCALE 1=1

REF MU61151

FMF

PREV

NO. REVISION BY & DATE

RFP 07-19-2007

DIST LB

CAD FILE 004172-01ME

SIZE

A

DRAWING NO. PAGE 1 OF 1

004172-01ME

REV.

THIS DRAWING IN DESIGN AND DETAIL IS OUR PROPERTY AND MUST NOT BE USED EXCEPT IN CONNECTION WITH OUR WORK ALL RIGHTS OF DESIGN AND INVENTION ARE RESERVED THIS IS AN ELECTRONICALLY GENERATED DOCUMENT - DO NOT SCALE THIS PRINT

## CERTIFICATION DATA SHEET

Model#: 326TTDC6026 AA

WINDING#: T16104019 NONE 3

CONN. DIAGRAM: 004172-01ME

ASSEMBLY: F1 ONLY

OUTLINE: 16955460ME

## TYPICAL MOTOR PERFORMANCE DATA

HP	KW	SYNC. RPM	F.L. RPM	FRAME	ENCLOSURE	KVA CODE	DESIGN
50&50	37&37	1800	1780&1475	326T	DP	G	B

PH	Hz	VOLTS	FL AMPS	START TYPE	DUTY	INSL	S.F	AMB°C	ELEVATION
3	60/50	208- 230/460#200/ 400	130- 118/59&133/6 6.5	Y START D RUN OR INV	CONTINUOU S	F2	1.15/1.0	40	3300

FULL LOAD EFF: 94.5&93.6	3/4 LOAD EFF: 94.5	1/2 LOAD EFF: 94	GTD. EFF	ELEC. TYPE	NO LOAD AMPS
FULL LOAD PF: 84&86.3	3/4 LOAD PF: 79	1/2 LOAD PF: 70	94.1	SQ CAGE INV RATED	44 / 22

F.L. TORQUE	LOCKED ROTOR AMPS	L.R. TORQUE	B.D. TORQUE	F.L. RISE°C
147 LB-FT	724 / 362	272 LB-FT 185	410 LB-FT 278	45

SOUND PRESSURE @ 3 FT.	SOUND POWER	ROTOR WK^2	MAX. WK^2	SAFE STALL TIME	STARTS /HOUR	APPROX. MOTOR WGT
75 dBA	85 dBA	- LB-FT^2	- LB-FT^2	20 SEC.	-	581 LBS.

## \*\*\* SUPPLEMENTAL INFORMATION \*\*\*

DE BRACKET TYPE	ODE BRACKET TYPE	MOUNT TYPE	ORIENTATION	SEVERE DUTY	HAZARDOUS LOCATION	DRIP COVER	SCREENS	PAINT
STANDARD	STANDARD	RIGID	HORIZONTAL	FALSE	NONE	FALSE	NONE	BLUE (ENAMEL)

BEARINGS		GREASE	SHAFT TYPE	SPECIAL DE	SPECIAL ODE	SHAFT MATERIAL	FRAME MATERIAL
DE	OPE						
BALL	BALL	POLYREX EM	T	NONE	NONE	1045 HOT ROLLED (C-204)	CAST IRON
6312	6312						

THERMO-PROTECTORS				THERMISTORS	CONTROL	SPACE /n HEATERS
THERMOSTATS	PROTECTORS	WDG RTDs	BRG RTDs			
NONE	NOT	NONE	NONE	NONE	FALSE	NONE VOLTS

If Inverter equals NONE, contact factory for further information

* N O T E S *	INVERTER TORQUE: VARIABLE 10:1
	INV. HP SPEED RANGE: NONE
	ENCODER: NONE
	NONE NONE NONE NONE PPR
	BRAKE: NONE NONE
	NONE P/N NONE
	NONE NONE
	NONE FT-LB NONE V NONE Hz

DATE: 06/21/2017 06:39:42 AM  
FORM 3531 REV.3 02/07/99

\*\* Subject to change without notice.

## Data Sheet

Date: 29-06-2017

Customer:

Attention:

Submitted by: FAREEDA DUDEKULA



326TTDC6026

Submittal

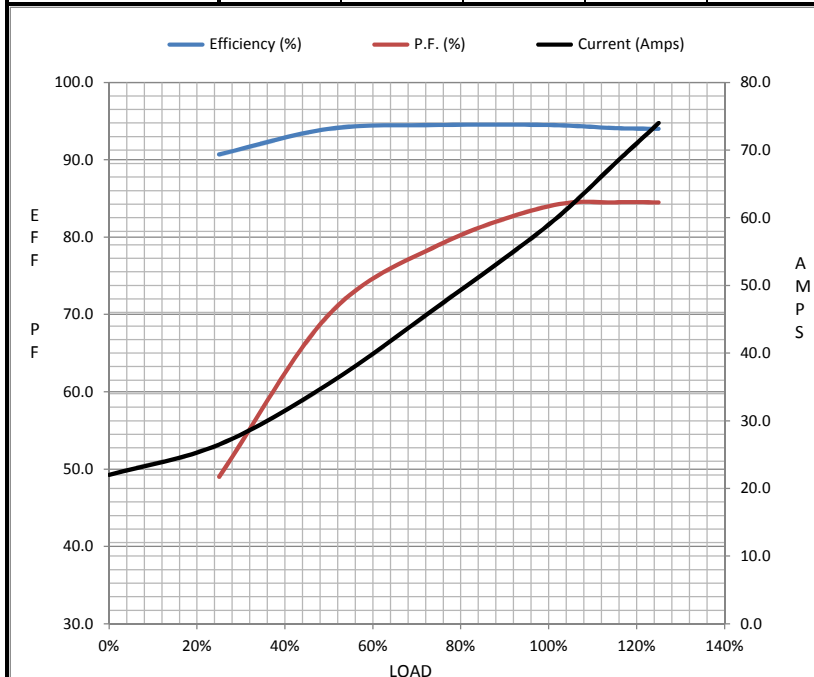
Data @ 460 V

## Motor Load Data

Load	0%	25%	50%	75%	100%	115%	125%	LR	
Current (Amps)	22.0	26.5	35.5	47.0	59.0	68.0	74.0	362	
Torque (ft-lb)	0.00	37.5	75.0	112	147	170	188	272	
RPM	1800	1795	1790	1785	1780	1,777	1775	0	
Efficiency (%)		90.7	94.0	94.5	94.5	94.1	94.0		
P.F. (%)	4.5	49.0	70.0	79.0	84.0	84.5	84.5	37.0	

## Motor Speed Data

	LR	Pull-Up	BD	Rated	Idle	Information Block			
Speed (RPM)	0	900	1675	1780	1800	HP	50.0		
Current (Amps)	362	325	235	59.0	22.0	Sync. RPM	1800		
Torque (ft-lb)	272	240	410	147	0.00	Frame	326		



Frame	326			
Enclosure	DP			
Construction	TDC			
Voltage	3-230/460#200/4V			
Frequency	60 Hz			
Design	B			
LR Code letter	G			
Service Factor	1.15			
Temp Rise @ FL	45 ° C			
Duty	CONT			
Ambient	40 ° C			
Elevation	1,000 feet			
Rotor/Shaft wk²	0.00 Lb-Ft²			
Ref Wdg	T16104019 NONE			
Sound Pressure @ 1M	75 dBA			
VFD Rating	VARIABLE 10:1			
Outline Dwg	16955460ME			
Conn. Diag	004172-01ME			
Additional Specifications:				
0				
365THFS8036				
EQUIV CKT (OHMS / PHASE)				
R1	R2	X1	X2	Xm
0.0000	0.0000	0.0000	0.0000	0.0000

## Speed -Torque Curve

