

PRODUCT INFORMATION PACKET

Model No: 326TSTFCD6502

Catalog No: E663A

Severe Duty Motors, TEFC, 50 HP, 3 Ph, 60 Hz, 575 V, 3568 RPM, 326TS Frame



Regal and are trademarks of Regal Rexnord Corporation or one of its affiliated companies.
©2022 Regal Rexnord Corporation, All Rights Reserved. MC017097E

Nameplate Specifications

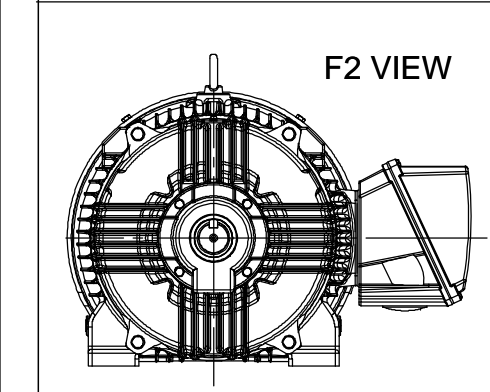
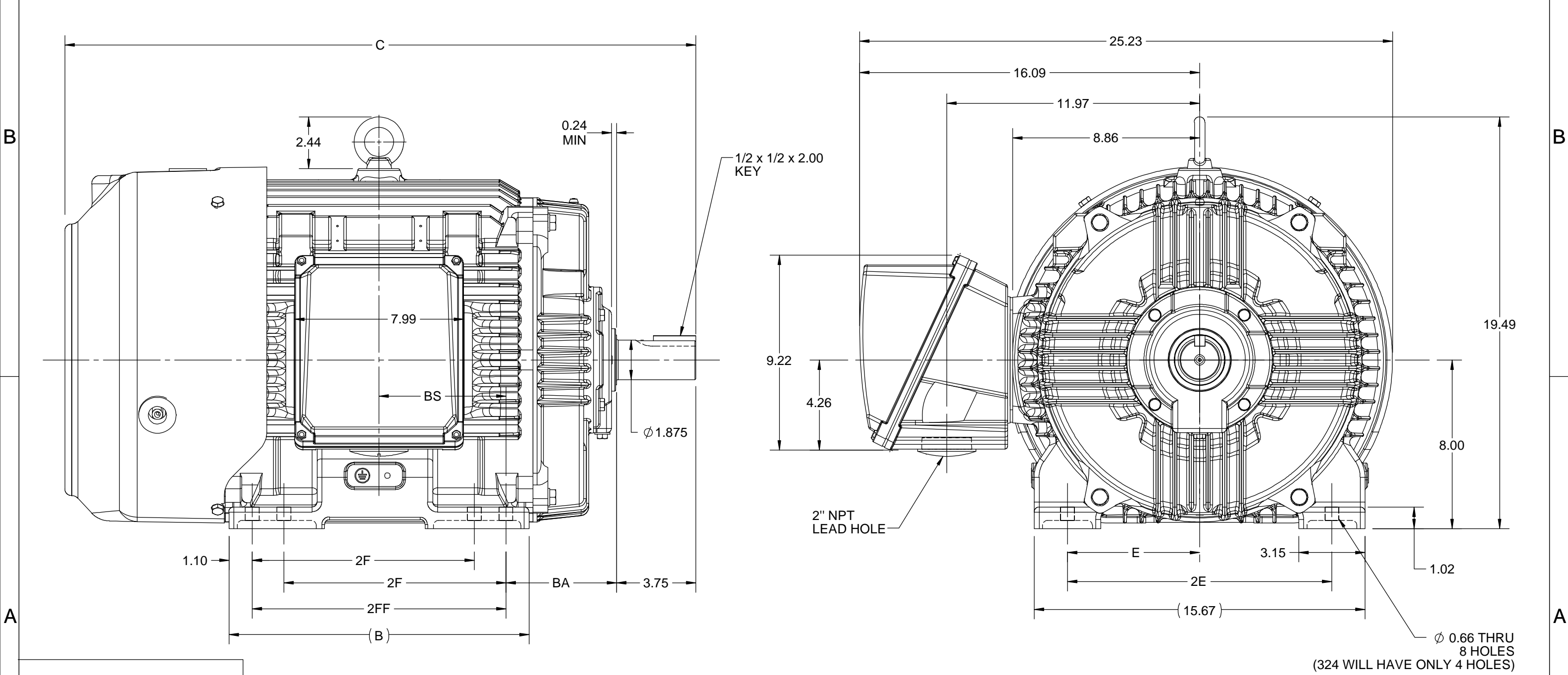
Output HP	50 Hp	Output KW	37.0 kW
Frequency	60 Hz	Voltage	575 V
Current	45.0 A	Speed	3568 rpm
Service Factor	1.15	Phase	3
Efficiency	94.1 %	Power Factor	88
Duty	Continuous	Insulation Class	H
Design Code	B	KVA Code	G
Frame	326TS	Enclosure	Totally Enclosed Fan Cooled
Thermal Protection	No Protection	Ambient Temperature	40 °C
Drive End Bearing Size	6312	Opp Drive End Bearing Size	6212
UL	Listed	CSA	Y
CE	Y	IP Code	55
Hazardous Location	DIVISION 2 T2B	Number of Speeds	1


Technical Specifications

Electrical Type	Squirrel Cage Inverter Rated	Starting Method	Line Or Inverter
Poles	2	Rotation	Selective Clockwise
Resistance Main	.128 Ohms	Mounting	Rigid Base
Motor Orientation	Horizontal	Drive End Bearing	Ball
Opp Drive End Bearing	Ball	Frame Material	Cast Iron
Shaft Type	TS	Shaft Diameter	1.875 in
Assembly/Box Mounting	F1/F2 CAPABLE	Inverter Load	CONSTANT 2:1/VARIABLE 10:1
Outline Drawing	SS312940-200	Connection Drawing	EE7300

This is an uncontrolled document once printed or downloaded and is subject to change without notice. Date Created:05/11/2022

4				3				2			1
DASH NO.	B	C	E	2E	2F	2FF	BA	BS	MOUNTING	FRAME	
100	12.71	28.35	6.25	12.50	---	10.50	5.25	5.25	F1 OR F2	324TS	
200	14.21	29.85			10.50	12.00		6.00		324/326TS	



DRAWING REVISION D		REVISION BY ASHOK N		REV DATE/© DATE 13/10/2020		PRIMARY DIMENSIONS ARE INCH mm DIMENSIONS IN [BRACKETS] ARE FOR REFERENCE ONLY		DRAWN BY BISWA		 Regal Beloit America, Inc.									
ECO ECO-0194008		APPROVED BY GNK		DATE 13/10/2020				DATE 24/10/2018		DESCRIPTION OUTLINE 324/326TS FR-NEMA-SD & IEEE841									
DRAWING UPDATED COPYRIGHT (PER REVISION DATE) REGAL BELOIT AMERICA, INC. ALL RIGHTS RESERVED. PROPRIETARY AND CONFIDENTIAL INFORMATION - THIS DOCUMENT IS THE PROPERTY OF REGAL BELOIT AMERICA, INC. ("OWNER") AND CONTAINS OWNER'S PROPRIETARY INFORMATION. ANY PERSON, CORPORATION OR OTHER FIRM RECEIVING IT IS DEEMED, BY RECEIVING IT, TO AGREE THAT IT, AND/OR ANY PART OF IT, SHALL NOT BE DISCLOSED TO ANY PERSON, CORPORATION OR OTHER ENTITY, DUPLICATED, AND/OR USED, EXCEPT AS EXPRESSLY APPROVED IN WRITING IN ADVANCE BY OWNER. THIS DOCUMENT SHALL BE RETURNED TO OWNER UPON REQUEST. IT MAY BE SUBJECT TO CERTAIN RESTRICTIONS UNDER APPLICABLE EXPORT CONTROL LAWS AND REGULATIONS.								APPROVED BY SBD					PROCESS/FINISH						
								DATE 24/10/2018											
														REFERENCE		MATERIAL		SHEET	
																		1 OF 1	

THREE PHASE - SINGLE VOLTAGE MOTOR - CONDUIT BOX @ 'A'

TO REVERSE ROTATION:
INTERCHANGE ANY TWO
LINE LEAD CONNECTIONS.

TERMINAL BLOCK WHEN SPECIFIED



IF MOTOR HAS 6 LEADS



A-9806 DECAL

OPTIONAL CORD CONNECTION



VIEW OF TERMINAL END

DRAWING REVISION AB	REVISION BY JJB	DATE 06-27-2017
ECO ECO-0125361	APPROVED BY TB	DATE 06-27-2017
ECO DESCRIPTION UPDATED TO CURRENT STANDARDS		
<small>COPYRIGHT REGAL BELOIT AMERICA, INC. ALL RIGHTS RESERVED. PROPRIETARY AND CONFIDENTIAL INFORMATION - THIS DOCUMENT IS THE PROPERTY OF REGAL BELOIT AMERICA, INC. ("OWNER") AND CONTAINS OWNER'S PROPRIETARY INFORMATION. ANY PERSON, CORPORATION OR OTHER FIRM RECEIVING IT IS DEEMED, BY RECEIVING IT, TO AGREE THAT IT, AND/OR ANY PART OF IT, SHALL NOT BE DISCLOSED TO ANY PERSON, CORPORATION OR OTHER ENTITY, DUPLICATED, AND/OR USED, EXCEPT AS EXPRESSLY APPROVED IN WRITING IN ADVANCE BY OWNER. THIS DOCUMENT SHALL BE RETURNED TO OWNER UPON REQUEST. IT MAY BE SUBJECT TO CERTAIN RESTRICTIONS UNDER APPLICABLE EXPORT CONTROL LAWS AND REGULATIONS.</small>		

DRAWN BY DA
DATE 03-26-1993
APPROVED BY TB
DATE 03-26-1993
REFERENCE
THIRD ANGLE PROJECTION



Regal Beloit America, Inc.

DESCRIPTION
CONNECTION DIAGRAM
EXTERNAL - SINGLE VOLTAGE - 3Ø MOTOR

MATERIAL PROCESS/FINISH

SIZE A	DRAWING NUMBER EE7300	SHEET 1 OF 1
-----------	--------------------------	-----------------

CERTIFICATION DATA SHEET

TYPICAL MOTOR PERFORMANCE DATA

5 of 6

Data Sheet

Date: 5/6/2020

326TSTFCD6502

Customer: _____

Attention: _____

Submitted by: _____



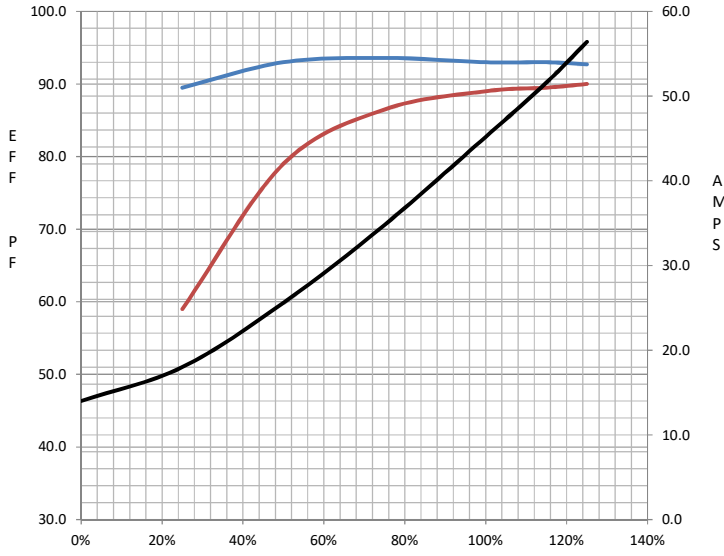
Submittal

Data @ 575 V

Motor Load Data

Load	0%	25%	50%	75%	100%	115%	125%	LR	
Current (Amps)	14.0	18.0	25.6	34.8	45.2	51.6	56.4	290	
Torque (ft-lb)	0.00	18.0	36.5	55.0	73.5	85.0	92.0	133	
RPM	3600	3592	3584	3576	3568	3562	3558	0	
Efficiency (%)		89.5	93.0	93.6	93.0	93.0	92.7		
P.F. (%)	8.0	59.0	79.0	86.5	89.0	89.5	90.0	32.0	

Motor Speed Data

	LR	Pull-Up	BD	Rated	Idle																																																												
Speed (RPM)	0	1800	3425	3568	3600																																																												
Current (Amps)	290	232	178	45.2	14.0																																																												
Torque (ft-lb)	133	118	207	73.5	0.00																																																												
<div><div><div>— Efficiency (%)</div><div>— P.F. (%)</div><div>— Current (Amps)</div></div></div> <table><tr><th colspan="2">Information Block</th></tr><tr><td>HP</td><td>50.0</td></tr><tr><td>Sync. RPM</td><td>3600</td></tr><tr><td>Frame</td><td>326</td></tr><tr><td>Enclosure</td><td>TEFC</td></tr><tr><td>Construction</td><td>TFC</td></tr><tr><td>Voltage</td><td>575 V</td></tr><tr><td>Frequency</td><td>60 Hz</td></tr><tr><td>Design</td><td>B</td></tr><tr><td>LR Code letter</td><td>G</td></tr><tr><td>Service Factor</td><td>1.15</td></tr><tr><td>Temp Rise @ FL</td><td>65 ° C</td></tr><tr><td>Duty</td><td>CONT</td></tr><tr><td>Ambient</td><td>40 ° C</td></tr><tr><td>Elevation</td><td>3,300 feet</td></tr><tr><td>Rotor/Shaft wk²</td><td>5.4 Lb-Ft²</td></tr><tr><td>Ref Wdg</td><td>HE32002007 NONE</td></tr><tr><td>Sound Pressure @ 1M</td><td>77 dBA</td></tr><tr><td>VFD Rating</td><td>CONSTANT 2:1/VARIABLE 10:1</td></tr><tr><td>Outline Dwg</td><td>SS312940-326TS</td></tr><tr><td>Conn. Diag</td><td>EE7300</td></tr><tr><td colspan="2">Additional Specifications:</td></tr><tr><td colspan="2">0</td></tr><tr><td colspan="2">0</td></tr><tr><td colspan="2">EQUIV CKT (OHMS / PHASE)</td></tr><tr><td>R1</td><td>R2</td><td>X1</td><td>X2</td><td>Xm</td></tr><tr><td>0.1280</td><td>0.0700</td><td>0.6200</td><td>0.7840</td><td>23.2240</td></tr></table>						Information Block		HP	50.0	Sync. RPM	3600	Frame	326	Enclosure	TEFC	Construction	TFC	Voltage	575 V	Frequency	60 Hz	Design	B	LR Code letter	G	Service Factor	1.15	Temp Rise @ FL	65 ° C	Duty	CONT	Ambient	40 ° C	Elevation	3,300 feet	Rotor/Shaft wk²	5.4 Lb-Ft²	Ref Wdg	HE32002007 NONE	Sound Pressure @ 1M	77 dBA	VFD Rating	CONSTANT 2:1/VARIABLE 10:1	Outline Dwg	SS312940-326TS	Conn. Diag	EE7300	Additional Specifications:		0		0		EQUIV CKT (OHMS / PHASE)		R1	R2	X1	X2	Xm	0.1280	0.0700	0.6200	0.7840	23.2240
						Information Block																																																											
						HP	50.0																																																										
						Sync. RPM	3600																																																										
						Frame	326																																																										
						Enclosure	TEFC																																																										
						Construction	TFC																																																										
						Voltage	575 V																																																										
						Frequency	60 Hz																																																										
						Design	B																																																										
						LR Code letter	G																																																										
						Service Factor	1.15																																																										
						Temp Rise @ FL	65 ° C																																																										
						Duty	CONT																																																										
						Ambient	40 ° C																																																										
						Elevation	3,300 feet																																																										
						Rotor/Shaft wk²	5.4 Lb-Ft²																																																										
						Ref Wdg	HE32002007 NONE																																																										
						Sound Pressure @ 1M	77 dBA																																																										
						VFD Rating	CONSTANT 2:1/VARIABLE 10:1																																																										
						Outline Dwg	SS312940-326TS																																																										
						Conn. Diag	EE7300																																																										
						Additional Specifications:																																																											
0																																																																	
0																																																																	
EQUIV CKT (OHMS / PHASE)																																																																	
R1	R2	X1	X2	Xm																																																													
0.1280	0.0700	0.6200	0.7840	23.2240																																																													

Speed -Torque Curve

