

PRODUCT INFORMATION PACKET

marathon®
Motors

Model No: 326TSTFC6006

Catalog No: E013

50 HP General Purpose Motor, 3 phase, 3600 RPM, 575 V, 326TS Frame, TEFC
General Purpose Motors



Regal and Marathon are trademarks of Regal Rexnord Corporation or one of its affiliated companies.
©2021 Regal Rexnord Corporation, All Rights Reserved. MC017097E

RegalRexnord

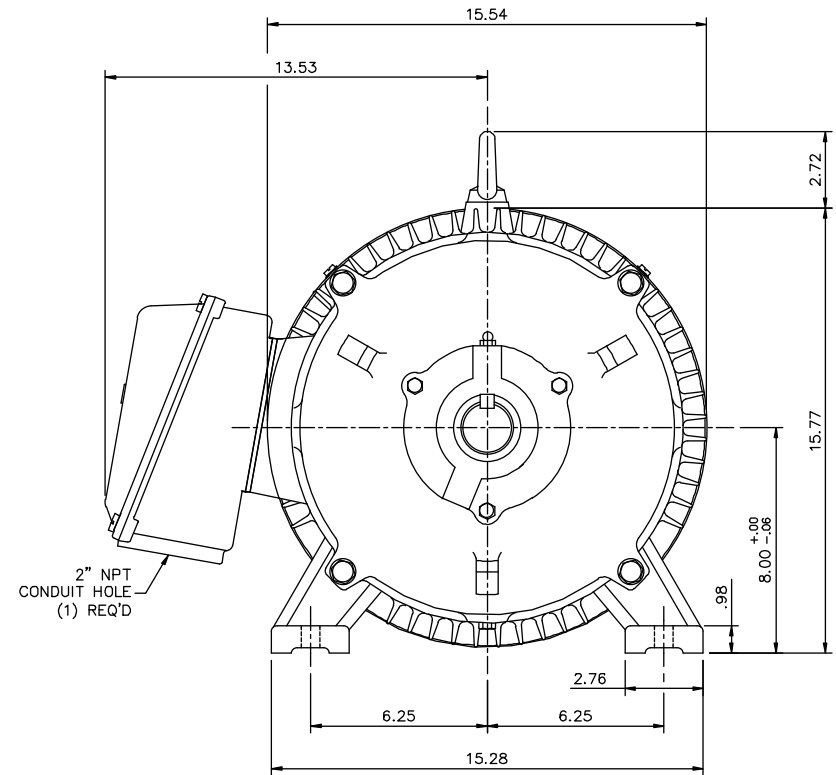
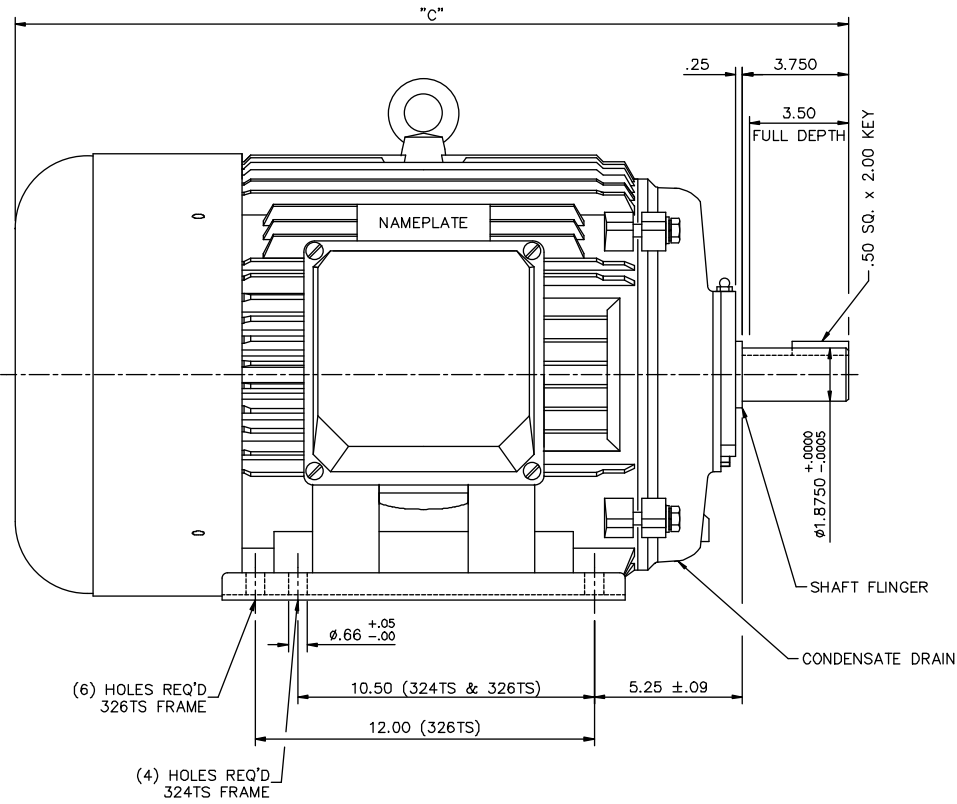
Nameplate Specifications

Output HP	50 Hp	Output KW	37.0 kW
Frequency	60 Hz	Voltage	575 V
Current	45.0 A	Speed	3565 rpm
Service Factor	1.15	Phase	3
Efficiency	94.1 %	Power Factor	88.5
Duty	Continuous	Insulation Class	F
Design Code	B	KVA Code	G
Frame	326TS	Enclosure	Totally Enclosed Fan Cooled
Thermal Protection	No	Ambient Temperature	40 °C
Drive End Bearing Size	6312	Opp Drive End Bearing Size	6312
UL	Recognized	CSA	Y
CE	Y	IP Code	43
Number of Speeds	1		


Technical Specifications

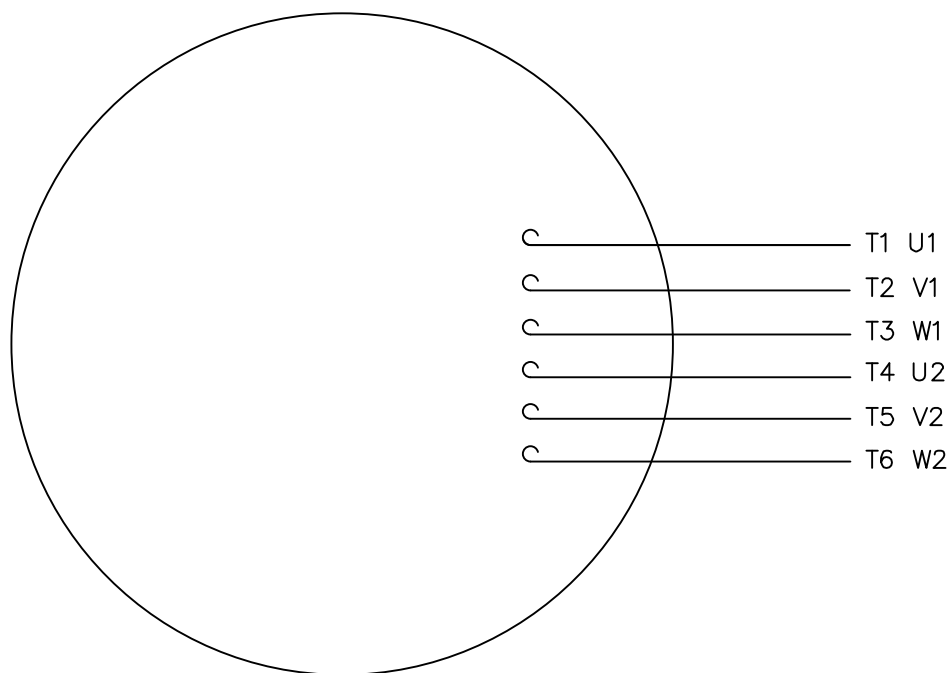
Electrical Type	Squirrel Cage Inverter Rated	Starting Method	Wye Start Delta Run Or Inverter
Poles	2	Rotation	Reversible
Resistance Main	.085 Ohms	Mounting	Rigid Base
Motor Orientation	Horizontal	Drive End Bearing	Ball
Opp Drive End Bearing	Ball	Frame Material	Cast Iron
Shaft Type	TS	Overall Length	29.53 in
Shaft Diameter	1.875 in	Shaft Extension	3.75 in
Assembly/Box Mounting	F1/F2 Capable		
Outline Drawing	16954260ME-326TS	Connection Drawing	00519001ME

This is an uncontrolled document once printed or downloaded and is subject to change without notice. Date Created:10/12/2021

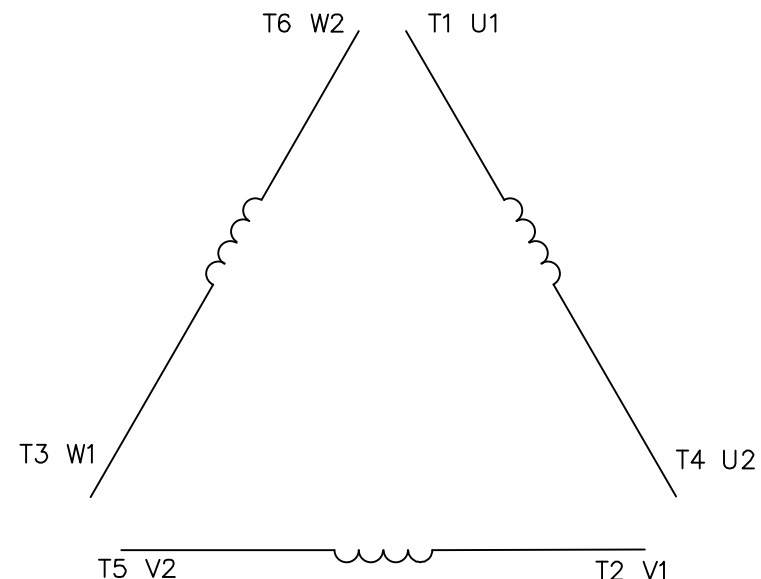


FRAME DESIGN	"C"
324TS	28.03
326TS	29.53


			TOLERANCES UNLESS SPECIFIED			DRAWN JJK 03/29/99	
			DEC.	INCHES		CHK	
			.X	±.1	TITLE OUTLINE - 320TS FRAME TEFC - RIGID	APPD PG 03/31/99	
			.XX	±.03		SCALE 1=4	
			.XXX	±.005		REF 169504	
01	ADDED HOLES FOR 326TS BASE	JJK 07/15/99	.XXXX	±.0005	MAT'L CAST IRON	FMF	
NO.	REVISION	BY & DATE	CHK	ANG	FINISH	PREV	
THIS DRAWING IN DESIGN AND DETAIL IS OUR PROPERTY AND MUST NOT BE USED EXCEPT IN CONNECTION WITH OUR WORK ALL RIGHTS OF DESIGN AND INVENTION ARE RESERVED THIS IS AN ELECTRONICALLY GENERATED DOCUMENT - DO NOT SCALE THIS PRINT			RFP	ANG	CAD FILE 16954260ME	SIZE B	DRAWING NO. 169542-60ME
			DIST	NLV			REV.



LINE LEADS



	L1	L2	L3	JOIN
START (WYE)	T1 U1	T2 V1	T3 U2	(T4,T5,T6) (U2,V2,W2)
RUN (DELTA)	(T1,T6) (U1,W2)	(T2,T4) (V1,U2)	(T3,T5) (W1,V2)	

				TOLERANCES UNLESS SPECIFIED			DRAWN PG 05/07/82		
				DEC.	INCHES		CHK		
				.X	±.1		APPD TEM 05/07/82		
03	ADDED IEC DESIGNATIONS	MOL 04/27/12	.XX	±.01	TITLE EXTERNAL WIRING DIAGRAM STAR START – DELTA RUN		SCALE 1=1		
02	REMOVED OBSOLETE STATUS	KJH 06/28/99	.XXX	±.005			REF		
01	REDRAWN ON CAD	DBT 05/30/97	.XXXX	±.0005	MAT'L. Y–CONNECTED START – DELTA CONNECTED RUN		FMF		
NO.	REVISION	BY & DATE	CHK	ANG	±1/2"	FINISH SINGLE VOLTAGE	PREV		
THIS DRAWING IN DESIGN AND DETAIL IS OUR PROPERTY AND MUST NOT BE USED EXCEPT IN CONNECTION WITH OUR WORK ALL RIGHTS OF DESIGN AND INVENTION ARE RESERVED THIS IS AN ELECTRONICALLY GENERATED DOCUMENT – DO NOT SCALE THIS PRINT			RFP		CAD FILE 00519001ME		SIZE	DRAWING NO.	REV.
			DIST				A	005190–01ME	03

CERTIFICATION DATA SHEET

Model#: 326TSTFC6006 AA
 CONN. DIAGRAM: 00519001ME
 OUTLINE: 16954260RB

WINDING#: T16102017 NONE 3
 ASSEMBLY: F1/F2 CAPABLE

TYPICAL MOTOR PERFORMANCE DATA

HP	KW	SYNC. RPM	F.L. RPM	FRAME	ENCLOSURE	KVA CODE	DESIGN
50	37	3600	3565	326TS	TEFC	G	B

PH	Hz	VOLTS	FL AMPS	START TYPE	DUTY	INSL	S.F	AMB°C	ELEVATION
3	60	575	45	Y START D RUN OR INV	CONTINUOUS	F2	1.15	40	3300

FULL LOAD EFF: 94.1	3/4 LOAD EFF: 94.5	1/2 LOAD EFF: 94.1	GTD. EFF	ELEC. TYPE	NO LOAD AMPS
FULL LOAD PF: 88.5	3/4 LOAD PF: 87.5	1/2 LOAD PF: 83.5	93	SQ CAGE INV RATED	10.2

F.L. TORQUE	LOCKED ROTOR AMPS	L.R. TORQUE	B.D. TORQUE	F.L. RISE°C
73.7 LB-FT	287.2	124 LB-FT 168	186.5 LB-FT 253	58

SOUND PRESSURE @ 3 FT.	SOUND POWER	ROTOR WK^2	MAX. WK^2	SAFE STALL TIME	STARTS /HOUR	APPROX. MOTOR WGT
- dBA	- dBA	- LB-FT^2	- LB-FT^2	15 SEC.	2	600 LBS.

*** SUPPLEMENTAL INFORMATION ***

DE BRACKET TYPE	ODE BRACKET TYPE	MOUNT TYPE	ORIENTATION	SEVERE DUTY	HAZARDOUS LOCATION	DRIP COVER	SCREENS	PAINT
STANDARD	STANDARD	RIGID	HORIZONTAL	FALSE	NONE	FALSE	NONE	BLUE (ENAMEL)

BEARINGS		GREASE	SHAFT TYPE	SPECIAL DE	SPECIAL ODE	SHAFT MATERIAL	FRAME MATERIAL
DE	OPE						
BALL	BALL						
6312	6312	POLYREX EM	TS	NONE	NONE	1045 HOT ROLLED (C-204)	CAST IRON

THERMO-PROTECTORS				THERMISTORS	CONTROL	SPACE /n HEATERS
THERMOSTATS	PROTECTORS	WDG RTDs	BRG RTDs			
NONE	NOT	NONE	NONE	NONE	FALSE	NONE VOLTS

If Inverter equals NONE, contact factory for further information

INVERTER TORQUE: CONSTANT 2:1
 INV. HP SPEED RANGE: 1.5 X BASE SPEED

ENCODER: NONE
 NONE NONE
 NONE NONE PPR

BRAKE: NONE NONE
 NONE P/N NONE
 NONE NONE
 NONE FT-LB NONE V NONE Hz

*
N
O
T
E
S
*

DATE: 06/21/2017 06:29:11 AM
 FORM 3531 REV.3 02/07/99
 ** Subject to change without notice.

Data Sheet

326TSTFC6006

Date: 1/28/2019
 Customer: _____
 Attention: _____
 Submitted by: FAREEDA DUDEKULA

marathon
 Motors

Submittal

Data @ 575 V

Motor Load Data

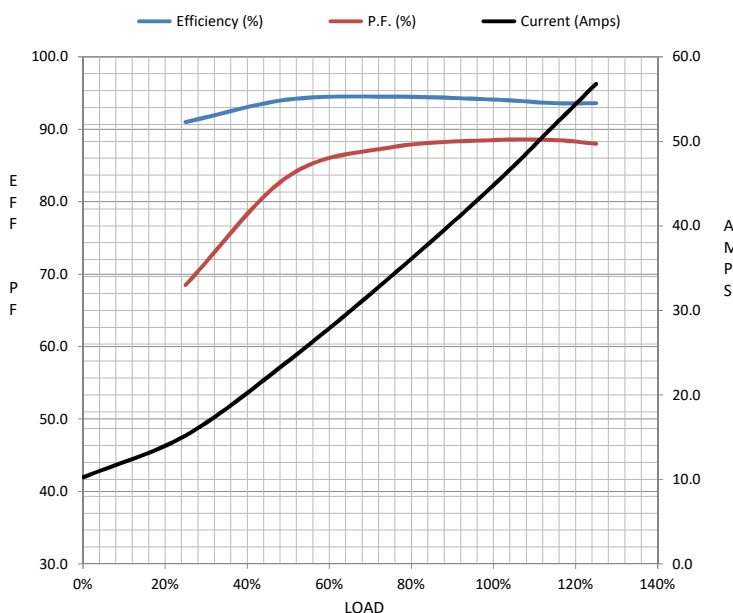
Load	0%	25%	50%	75%	100%	115%	125%	LR	
Current (Amps)	10.2	15.2	24.0	34.0	44.8	52.0	56.8	287	
Torque (ft-lb)	0.00	18.3	36.6	55.0	73.7	85.0	92.4	124	
RPM	3600	3595	3585	3575	3565	3555	3550	0	
Efficiency (%)		91.0	94.1	94.5	94.1	93.6	93.6		
P.F. (%)	8.0	68.5	83.5	87.5	88.5	88.5	88.0	0.0	

Motor Speed Data

	LR	Pull-Up	BD	Rated	Idle
Speed (RPM)	0	1755	3355	3565	3600
Current (Amps)	287	262	178	44.8	10.2
Torque (ft-lb)	124	97.5	187	73.7	0.00

Information Block

HP	50.0			
Sync. RPM	3600			
Frame	326			
Enclosure	TEFC			
Construction	TFS			
Voltage	575 V			
Frequency	60 Hz			
Design	B			
LR Code letter	G			
Service Factor	1.15			
Temp Rise @ FL	58 ° C			
Duty	CONT			
Ambient	40 ° C			
Elevation	3,300 feet			
Rotor/Shaft wk ²	0.00 Lb-Ft ²			
Ref Wdg	T16102017 NONE			
Sound Pressure @ 1M	- dBA			
VFD Rating	CONSTANT 2:1			
Outline Dwg	16954260ME-326TS			
Conn. Diag	00519001ME			
Additional Specifications:				
0				
0				
EQUIV CKT (OHMS / PHASE)				
R1	R2	X1	X2	Xm
0.0000	0.0000	0.0000	0.0000	0.0000



Speed -Torque Curve

