

PRODUCT INFORMATION PACKET

Model No: 326TSTDP4003

Catalog No: U910

General Purpose Motor, 60 HP, 3 Ph, 60 Hz, 200 V, 3600 RPM, 326TS Frame, DP



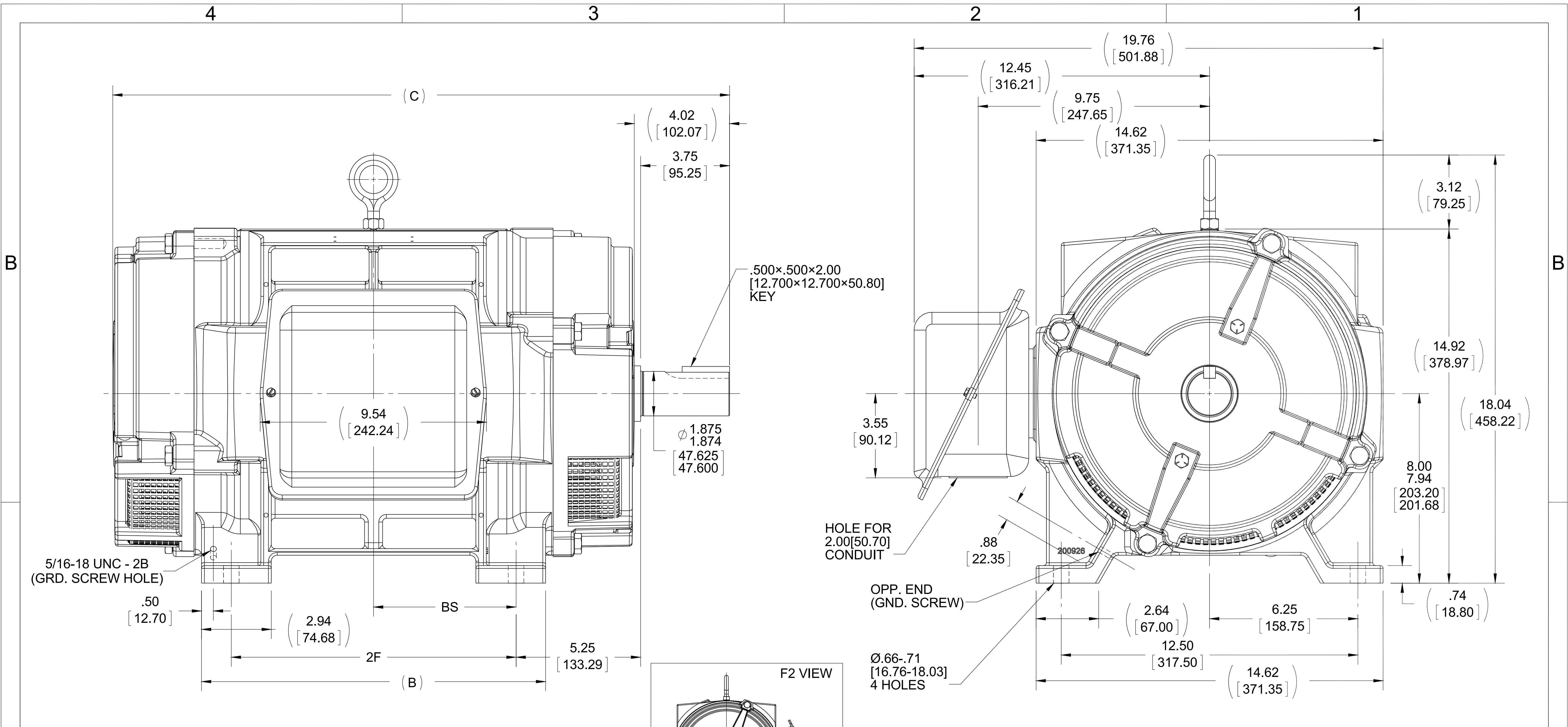
Regal and are trademarks of Regal Rexnord Corporation or one of its affiliated companies.
©2022 Regal Rexnord Corporation, All Rights Reserved. MC017097E

Nameplate Specifications

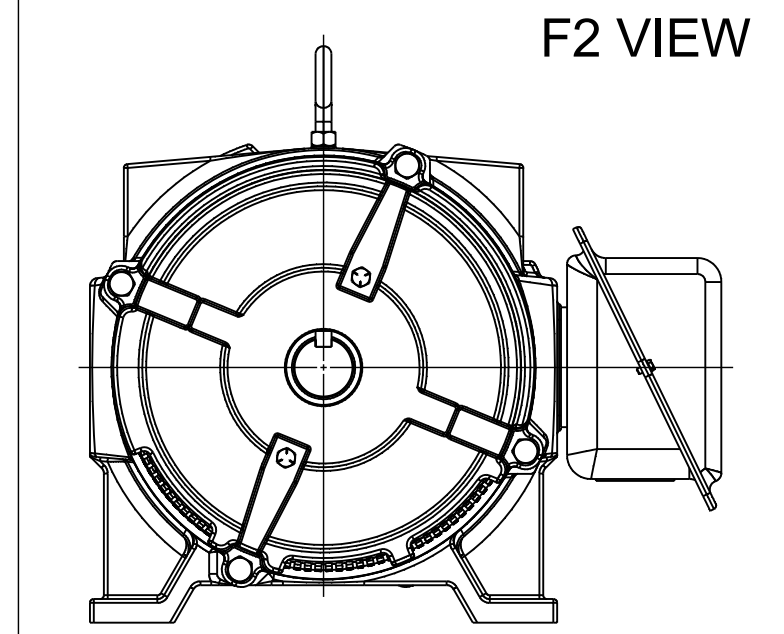
| | | | |
|------------------------|----------------------|----------------------------|-------------------|
| Output HP | 60 Hp | Output KW | 45.0 kW |
| Frequency | 60 Hz | Voltage | 200 V |
| Current | 155.0 A | Speed | 3555 rpm |
| Service Factor | 1.15 | Phase | 3 |
| Efficiency | 93 % | Power Factor | 89 |
| Duty | Continuous | Insulation Class | B |
| Design Code | B | KVA Code | G |
| Frame | 326TS | Enclosure | Drip Proof |
| Thermal Protection | No Protection | Ambient Temperature | 40 °C |
| Drive End Bearing Size | 6312 | Opp Drive End Bearing Size | 6311 |
| UL | Recognized | CSA | Y |
| CE | Y | IP Code | 12 |
| Number of Speeds | 1 | | |

Technical Specifications

| | | | |
|-----------------------|------------------------------------|-----------------------|------------------------|
| Electrical Type | Squirrel Cage Induction Run | Starting Method | Across The Line |
| Poles | 2 | Rotation | Reversible |
| Resistance Main | .14 Ohms | Mounting | Rigid Base |
| Motor Orientation | Horizontal | Drive End Bearing | Ball |
| Opp Drive End Bearing | Ball | Frame Material | Cast Iron |
| Shaft Type | TS | Overall Length | 26.00 in |
| Frame Length | 15.12 in | Shaft Diameter | 1.875 in |
| Shaft Extension | 3.75 in | Assembly/Box Mounting | F1/F2 Capable |
| Outline Drawing | B-SS200079-1512 | Connection Drawing | A-EE7300U |



- NOTES:
1. BOX CAN BE ROTATED IN 90° STEPS.
 2. BOX CAN BE MOUNTED ON OPPOSITE SIDE BY REMOVING BRACKETS AND TURNING FRAME 180°
 3. NAMEPLATE TO BE READ FROM CONDUIT BOX SIDE OF MOTOR



| DASH | FRAME | B | C | 2F | BS |
|------|-------|-------------------|-------------------|-------------------|------------------|
| 1362 | 324TS | 13.00 [330.20] | 24.50 [622.30] | 10.50 [266.70] | 5.25 [133.35] |
| 1512 | 326TS | 14.50 [368.30] | 26.00 [660.40] | 12.00 [304.80] | 6.00 [152.40] |

| | | |
|---|--------------------|--------------------|
| DRAWING REVISION C | REVISION BY AJW | DATE 09-28-2015 |
| ECO ECO-0085350 | APPROVED BY DJK | DATE 09-29-2015 |
| ECO DESCRIPTION UPDATED TO CURRENT STANDARDS COPYRIGHT REGAL BELOIT AMERICA, INC. ALL RIGHTS RESERVED. PROPRIETARY AND CONFIDENTIAL INFORMATION - THIS DOCUMENT IS THE PROPERTY OF REGAL BELOIT AMERICA, INC. ("OWNER") AND CONTAINS OWNER'S PROPRIETARY INFORMATION. ANY PERSON, CORPORATION OR OTHER FIRM RECEIVING IT IS DEEMED, BY RECEIVING IT, TO AGREE THAT IT, AND/OR ANY PART OF IT, SHALL NOT BE DISCLOSED TO ANY PERSON, CORPORATION OR OTHER ENTITY, DUPLICATED, AND/OR USED, EXCEPT AS EXPRESSLY APPROVED IN WRITING IN ADVANCE BY OWNER. THIS DOCUMENT SHALL BE RETURNED TO OWNER UPON REQUEST. IT MAY BE SUBJECT TO CERTAIN RESTRICTIONS UNDER APPLICABLE EXPORT CONTROL LAWS AND REGULATIONS. | | |

TOLERANCES UNLESS OTHERWISE SPECIFIED:

| DEC. | INCH | mm | ANGLE |
|-------|---------|-----------|---------|
| .X | ±0.1 | [±2.5] | ±7° 30" |
| .XX | ±0.03 | [±0.76] | |
| .XXX | ±0.005 | [±0.127] | |
| .XXXX | ±0.0005 | [±0.0127] | |

REMOVE BURRS & BREAK SHARP EDGES: .003/.015 [0.076/.381] X 45°
CORNER FILLETS: R.02 [51]
MACHINED SURFACES: 200 INCH/mm 5.1
mm SHOWN IN [BRACKETS]

| | |
|-------------------|------------------------|
| DRAWN BY JL | DATE 02-18-1988 |
| APPROVED BY LS | DATE 03-21-1988 |
| REFERENCE | THIRD ANGLE PROJECTION |

| | |
|---|-----------------------------------|
| REGAL ™ Regal Beloit America, Inc. | |
| DESCRIPTION OUTLINE 320TS FR.-BB-TS-D.E.V.-DR. PR.-CAST IRON | |
| MATERIAL | PROCESS/FINISH |
| SIZE B | DRAWING NUMBER SS200079 |
| SHEET 1 OF 1 | |

IF MOTOR HAS 9 LEADS

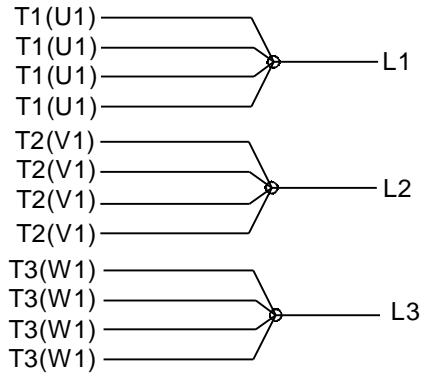


IF MOTOR HAS 6 LEADS



A-9806 DECAL IF CALLED FOR

IF MOTOR HAS 12 LEADS



VIEW OF TERMINAL END

| | | | | | | | | | | | | | | | | | | | | | | | | | | |
|--|---------------------------|---------------------------|--|-------------------------------------|-----------------------------------|-----------|------------------|----------------------------------|------------------------|----|------|--------|---------|-----|-------|---------|--|------|--------|----------|--|-------|---------|-----------|--|---------------------------|
| DRAWING REVISION L | REVISION BY AJW | DATE 05-04-2015 | TOLERANCES UNLESS OTHERWISE SPECIFIED: | DRAWN BY DRS | Regal Beloit America, Inc. | | | | | | | | | | | | | | | | | | | | | |
| ECO ECO-0077067 | APPROVED BY EWH | DATE 05-05-2015 | <table style="font-size: small; border-collapse: collapse;"> <tr> <td><u>DEC.</u></td> <td><u>INCH</u></td> <td><u>mm</u></td> <td><u>ANGLE</u></td> </tr> <tr> <td>.X</td> <td>±0.1</td> <td>[±2.5]</td> <td>±7' 30"</td> </tr> <tr> <td>.XX</td> <td>±0.02</td> <td>[±0.51]</td> <td></td> </tr> <tr> <td>.XXX</td> <td>±0.005</td> <td>[±0.127]</td> <td></td> </tr> <tr> <td>.XXXX</td> <td>±0.0005</td> <td>[±0.0127]</td> <td></td> </tr> </table> | <u>DEC.</u> | | | <u>INCH</u> | <u>mm</u> | <u>ANGLE</u> | .X | ±0.1 | [±2.5] | ±7' 30" | .XX | ±0.02 | [±0.51] | | .XXX | ±0.005 | [±0.127] | | .XXXX | ±0.0005 | [±0.0127] | | DATE 09-27-1996 |
| <u>DEC.</u> | <u>INCH</u> | <u>mm</u> | <u>ANGLE</u> | | | | | | | | | | | | | | | | | | | | | | | |
| .X | ±0.1 | [±2.5] | ±7' 30" | | | | | | | | | | | | | | | | | | | | | | | |
| .XX | ±0.02 | [±0.51] | | | | | | | | | | | | | | | | | | | | | | | | |
| .XXX | ±0.005 | [±0.127] | | | | | | | | | | | | | | | | | | | | | | | | |
| .XXXX | ±0.0005 | [±0.0127] | | | | | | | | | | | | | | | | | | | | | | | | |
| ECO DESCRIPTION UPDATED TO SOLIDWORKS <small>COPYRIGHT REGAL BELOIT AMERICA, INC. ALL RIGHTS RESERVED. PROPRIETARY AND CONFIDENTIAL INFORMATION - THIS DOCUMENT IS THE PROPERTY OF REGAL BELOIT AMERICA, INC. ("OWNER") AND CONTAINS OWNER'S PROPRIETARY INFORMATION. ANY PERSON, CORPORATION OR OTHER FIRM RECEIVING IT IS DEEMED, BY RECEIVING IT, TO AGREE THAT IT, AND/OR ANY PART OF IT, SHALL NOT BE DISCLOSED TO ANY PERSON, CORPORATION OR OTHER ENTITY, DUPLICATED, AND/OR USED, EXCEPT AS EXPRESSLY APPROVED IN WRITING IN ADVANCE BY OWNER. THIS DOCUMENT SHALL BE RETURNED TO OWNER UPON REQUEST. IT MAY BE SUBJECT TO CERTAIN RESTRICTIONS UNDER APPLICABLE EXPORT CONTROL LAWS AND REGULATIONS.</small> | | | APPROVED BY GK | MATERIAL _____ PROCESS/FINISH _____ | | | | | | | | | | | | | | | | | | | | | | |
| | | | DATE 09-30-1996 | | | REFERENCE | SIZE A | DRAWING NUMBER EE7300U | SHEET 1 OF 1 | | | | | | | | | | | | | | | | | |
| | | | REMOVE BURRS & BREAK SHARP EDGES: .003/.015 [.076/.381] X 45° CORNER FILLETS: R.02 [.51] MACHINED SURFACES: 200 $\sqrt{\text{INCH}}$ 5.1 $\sqrt{\text{mm}}$ mm SHOWN IN [BRACKETS] | THIRD ANGLE PROJECTION | | | | | | | | | | | | | | | | | | | | | | |

Data Sheet

Date: 9/15/2022
 Customer: _____
 Attention: _____
 Submitted by: _____



326TSTDP4003

Submittal

Data @ 200 V

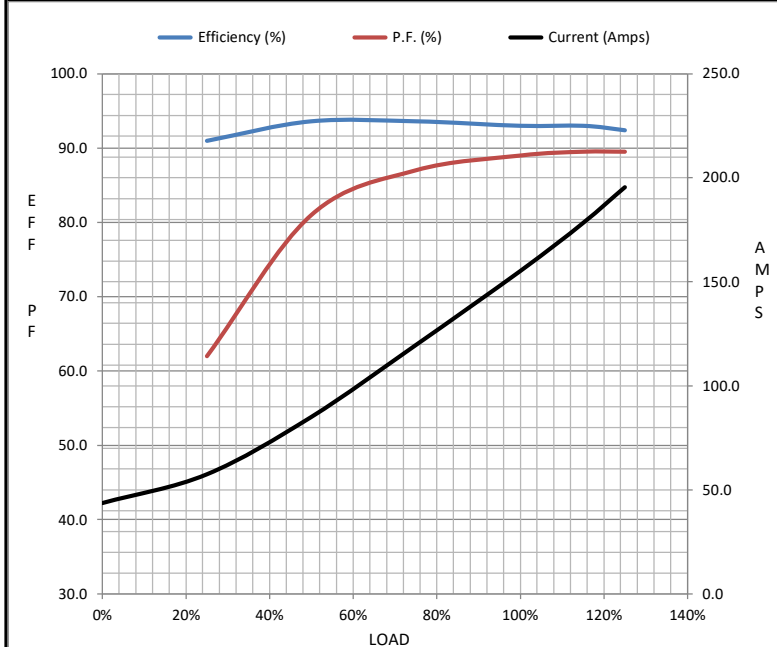
Motor Load Data

| Load | 0% | 25% | 50% | 75% | 100% | 115% | 125% | LR |
|----------------|------|------|------|------|------|-------|------|------|
| Current (Amps) | 43.7 | 57.5 | 85.1 | 120 | 155 | 178 | 196 | 978 |
| Torque (ft-lb) | 0.00 | 22.0 | 44.0 | 66.5 | 88.5 | 102 | 112 | 130 |
| RPM | 3600 | 3590 | 3575 | 3565 | 3555 | 3,545 | 3535 | 0 |
| Efficiency (%) | | 91.0 | 93.6 | 93.6 | 93.0 | 93.0 | 92.4 | |
| P.F. (%) | 6.5 | 62.0 | 81.0 | 87.0 | 89.0 | 89.5 | 89.5 | 34.0 |

Motor Speed Data

| | LR | Pull-Up | BD | Rated | Idle |
|----------------|-----|---------|------|-------|------|
| Speed (RPM) | 0 | 1500 | 3300 | 3555 | 3600 |
| Current (Amps) | 978 | 920 | 633 | 155 | 43.7 |
| Torque (ft-lb) | 130 | 115 | 240 | 88.5 | 0.00 |

| Information Block | | | | |
|-----------------------------|------------------------|--------|--------|--------|
| HP | 60.0 | | | |
| Sync. RPM | 3600 | | | |
| Frame | 326 | | | |
| Enclosure | DP | | | |
| Construction | TDP | | | |
| Voltage | 200 V | | | |
| Frequency | 60 Hz | | | |
| Design | B | | | |
| LR Code letter | G | | | |
| Service Factor | 1.15 | | | |
| Temp Rise @ FL | 40 °C | | | |
| Duty | CONT | | | |
| Ambient | 40 °C | | | |
| Elevation | 3,300 feet | | | |
| Rotor/Shaft wk ² | 3.3 Lb-Ft ² | | | |
| Ref Wdg | K2862124 NONE | | | |
| Sound Pressure @ 1M | 82 dBA | | | |
| VFD Rating | NONE | | | |
| Outline Dwg | | | | |
| Conn. Diag | A-EE7300U | | | |
| Additional Specifications: | | | | |
| 0 | | | | |
| 0 | | | | |
| EQUIV CKT (OHMS / PHASE) | | | | |
| R1 | R2 | X1 | X2 | Xm |
| 0.0150 | 0.0090 | 0.0720 | 0.0590 | 2.5550 |



Speed - Torque Curve

