

PRODUCT INFORMATION PACKET



Model No: 326THTCD38599
Catalog No: 326THTCD38599
25,1200,TENV,326TZ,3/60/230/460

Regal and Marathon are trademarks of Regal Rexnord Corporation or one of its affiliated companies.
©2025 Regal Rexnord Corporation, All Rights Reserved. MC017097E





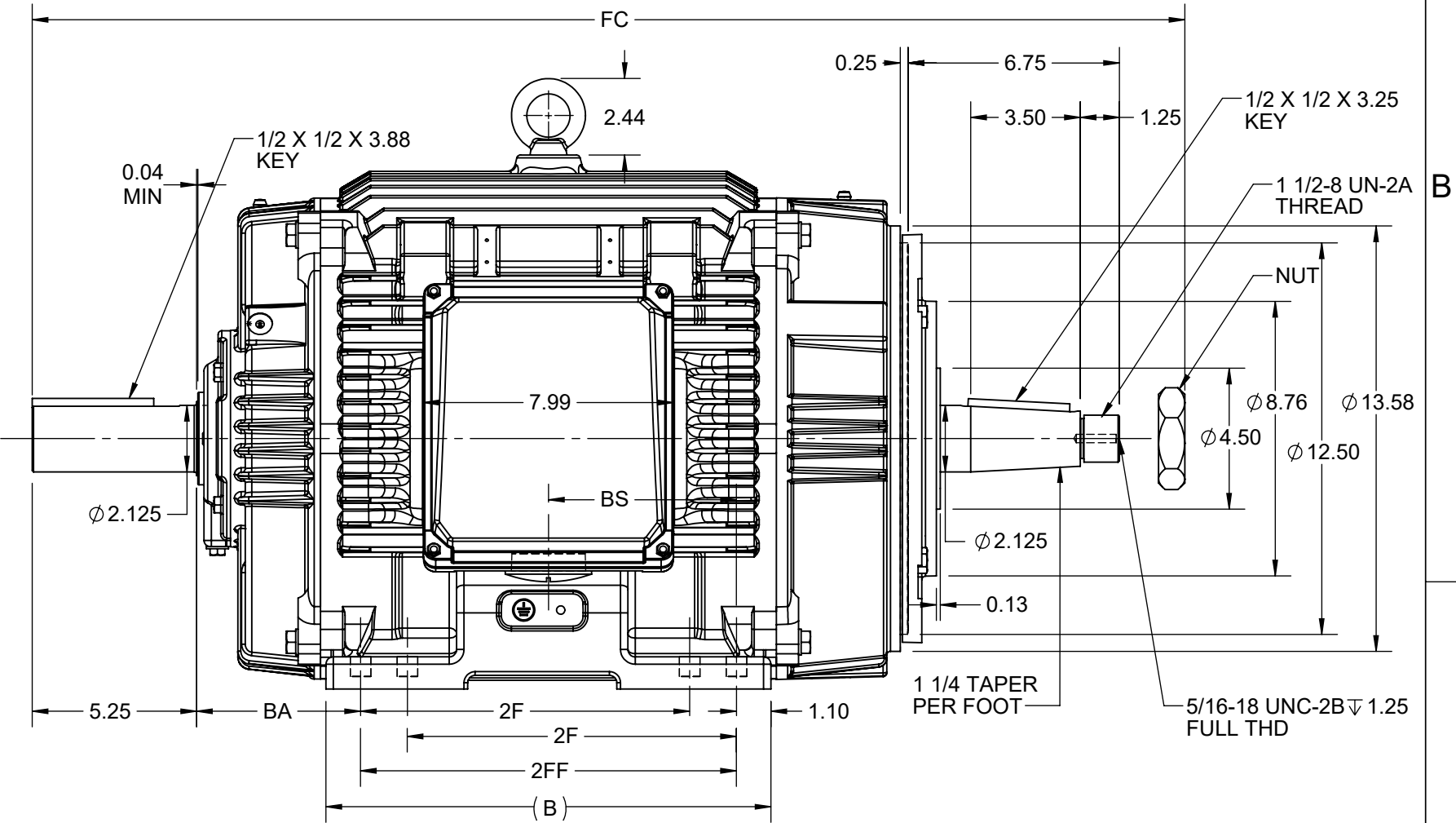
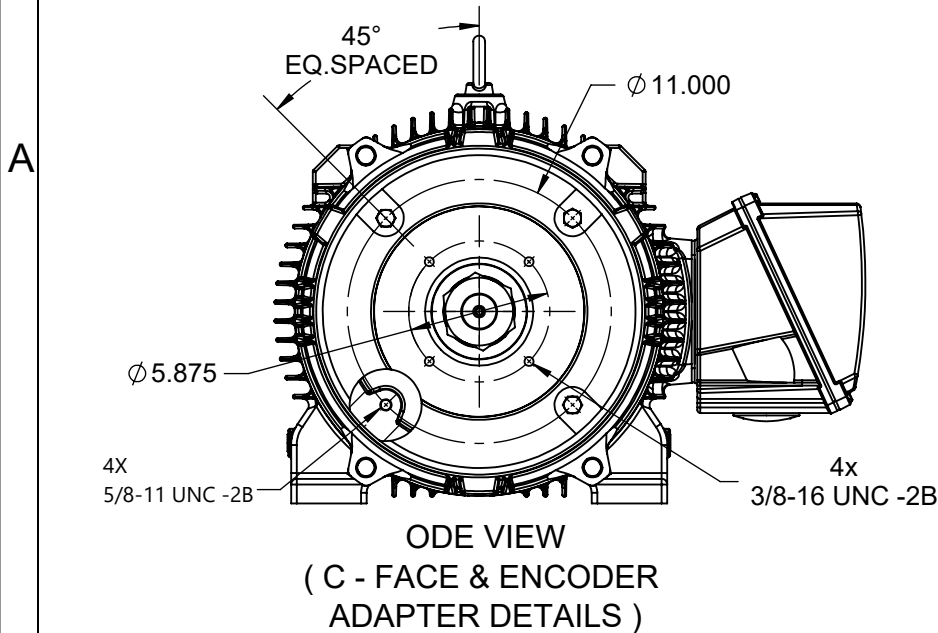
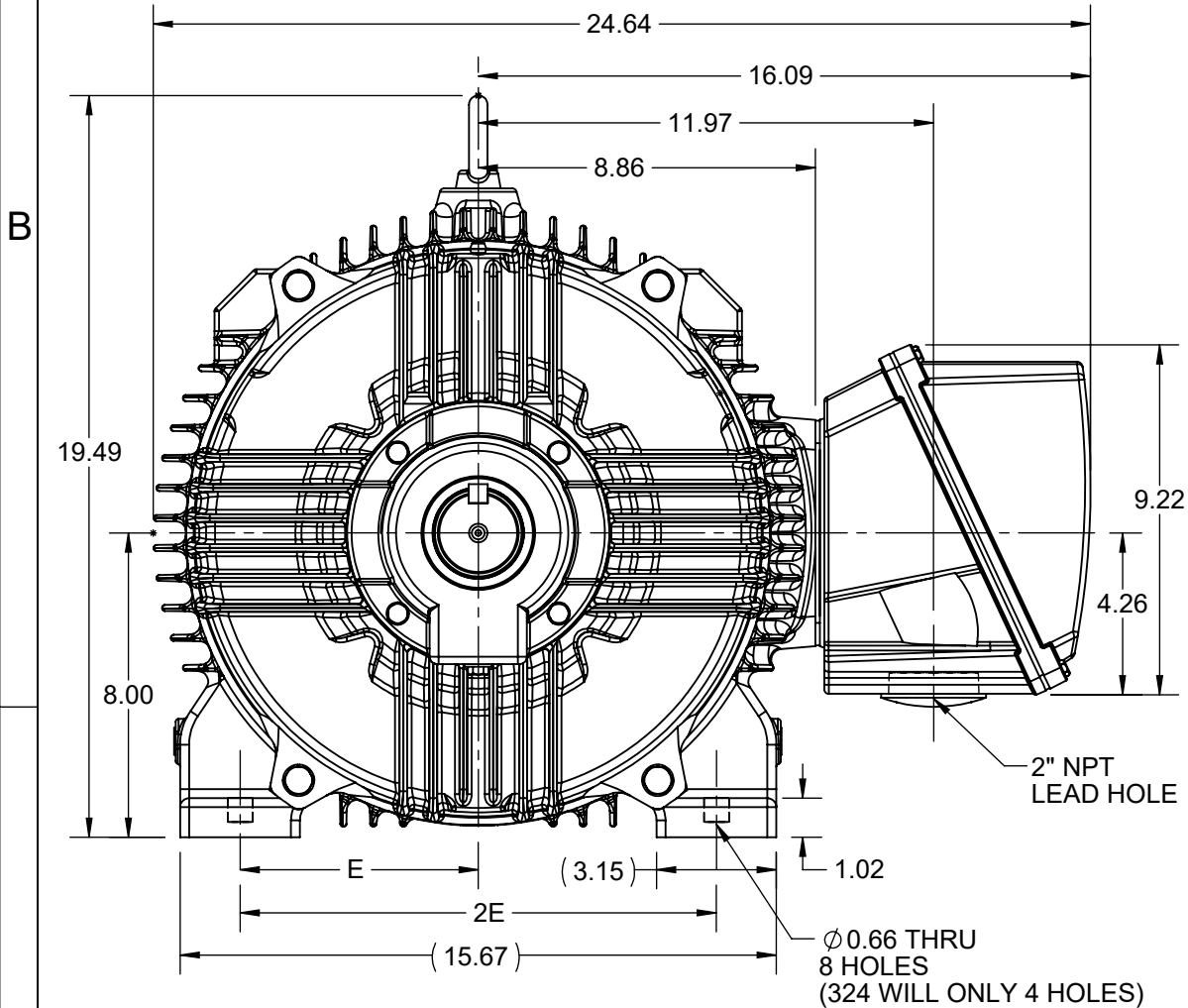
Nameplate Specifications

Technical Specifications

Shaft Diameter	2.125 in		
Outline Drawing	SS621081-200	Connection Drawing	EE7308T

This is an uncontrolled document once printed or downloaded and is subject to change without notice. Date Created:02/24/2025

4				3				2		1	
DASH NO.	B	FC	E	2E	2F	2FF	BA	BS	MOUNTING	FRAME	
100	12.71	33.23	6.25	12.50	---	10.50	5.25	5.25	F1 OR F2	324TZ	
200	14.21	34.73			10.50	12.00		6.00		324/326TZ	



NOTE:
FOR F1 SPECIFIC VIEW REFER OUTLINE SS621081

DRAWING REVISION A	REVISION BY	REV DATE/© DATE	DRAWN BY BHUVAN	marathon™	
REQUEST NUMBER CR-0021286	APPROVED BY	DATE	DATE 12/26/2024		
REQUEST NUMBER DESCRIPTION NEW DRAWING			APPROVED BY BBR	DESCRIPTION OUTLINE	
COPYRIGHT (PER REVISION DATE) MARATHON ELECTRIC, LLC. ALL RIGHTS RESERVED. PROPRIETARY AND CONFIDENTIAL INFORMATION - THIS DOCUMENT IS THE PROPERTY OF MARATHON ELECTRIC, LLC. ("OWNER") AND CONTAINS OWNER'S PROPRIETARY INFORMATION. ANY PERSON, CORPORATION OR OTHER FIRM RECEIVING IT IS DEEMED, BY RECEIVING IT, TO AGREE THAT IT, AND/OR ANY PART OF IT, SHALL NOT BE DISCLOSED TO ANY PERSON, CORPORATION OR OTHER ENTITY, DUPLICATED, AND/OR USED, EXCEPT AS EXPRESSLY APPROVED IN WRITING IN ADVANCE BY OWNER. THIS DOCUMENT SHALL BE RETURNED TO OWNER UPON REQUEST. IT MAY BE SUBJECT TO CERTAIN RESTRICTIONS UNDER APPLICABLE EXPORT CONTROL LAWS AND REGULATIONS.			DATE 12/26/2024	324/326TZ FR-TENV-SD, DBL. SPL. EXTN. WITH ENC. PROV.	
			REFERENCE	MATERIAL	PROCESS/FINISH
THIRD ANGLE PROJECTION			SIZE B	DRAWING NUMBER SS621081A	SHEET 1 OF 1

HIGH VOLTAGE

THREE PHASE
DUAL VOLTAGE MOTOR

NOTE FOR FACTORY USE ONLY:
TO SURGE TEST FOR COMMON CONNECT:
HIGH VOLT: CONNECT P1 TO T1
THEN P2 TO L1
LOW VOLT: CONNECT P1 TO T1 & T7,
THEN P2 TO L1

LOW VOLTAGE



VIEW OF TERMINAL END

NOTE: LEAD'S COLOR CAN BE YELLOW OR WHITE FOR MT2 PLANT

DRAWING REVISION T	REVISION BY ZR	DATE 01-14-2019
ECO ECO-0159915	APPROVED BY DR	DATE 01-15-2019

ECO DESCRIPTION
ADDED TERMINAL CONNECTION DIAGRAM

COPYRIGHT REGAL BELOIT AMERICA, INC. ALL RIGHTS RESERVED.
PROPRIETARY AND CONFIDENTIAL INFORMATION - THIS DOCUMENT IS THE PROPERTY OF
REGAL BELOIT AMERICA, INC. ("OWNER") AND CONTAINS OWNER'S PROPRIETARY
INFORMATION. ANY PERSON, CORPORATION OR OTHER FIRM RECEIVING IT IS DEEMED,
BY RECEIVING IT, TO AGREE THAT IT, AND/OR ANY PART OF IT, SHALL NOT BE DISCLOSED
TO ANY PERSON, CORPORATION OR OTHER ENTITY, DUPLICATED, AND/OR USED, EXCEPT
AS EXPRESSLY APPROVED IN WRITING IN ADVANCE BY OWNER. THIS DOCUMENT SHALL
BE RETURNED TO OWNER UPON REQUEST. IT MAY BE SUBJECT TO CERTAIN
RESTRICTIONS UNDER APPLICABLE EXPORT CONTROL LAWS AND REGULATIONS.

DRAWN BY SMC	DATE 05-13-1992
APPROVED BY TB	DATE 05-13-1992
REFERENCE EE7308/EE7300	THIRD ANGLE PROJECTION

REGAL™ Regal Beloit America, Inc.

DESCRIPTION
CONN DIAGRAM-INTERNAL
3 PHASE - DUAL VOLTAGE MOTOR

MATERIAL	PROCESS/FINISH
SIZE A	DRAWING NUMBER EE7308T
	SHEET 1 OF 1