

# PRODUCT INFORMATION PACKET

Model No: 324TTDR7408

Catalog No: M820

Other Purpose Motor, 20 HP, 3 Ph, 60 Hz, 230/460 V, 900 RPM, 324HPV Frame, DP

Regal and are trademarks of Regal Rexnord Corporation or one of its affiliated companies.  
©2022 Regal Rexnord Corporation, All Rights Reserved. MC017097E

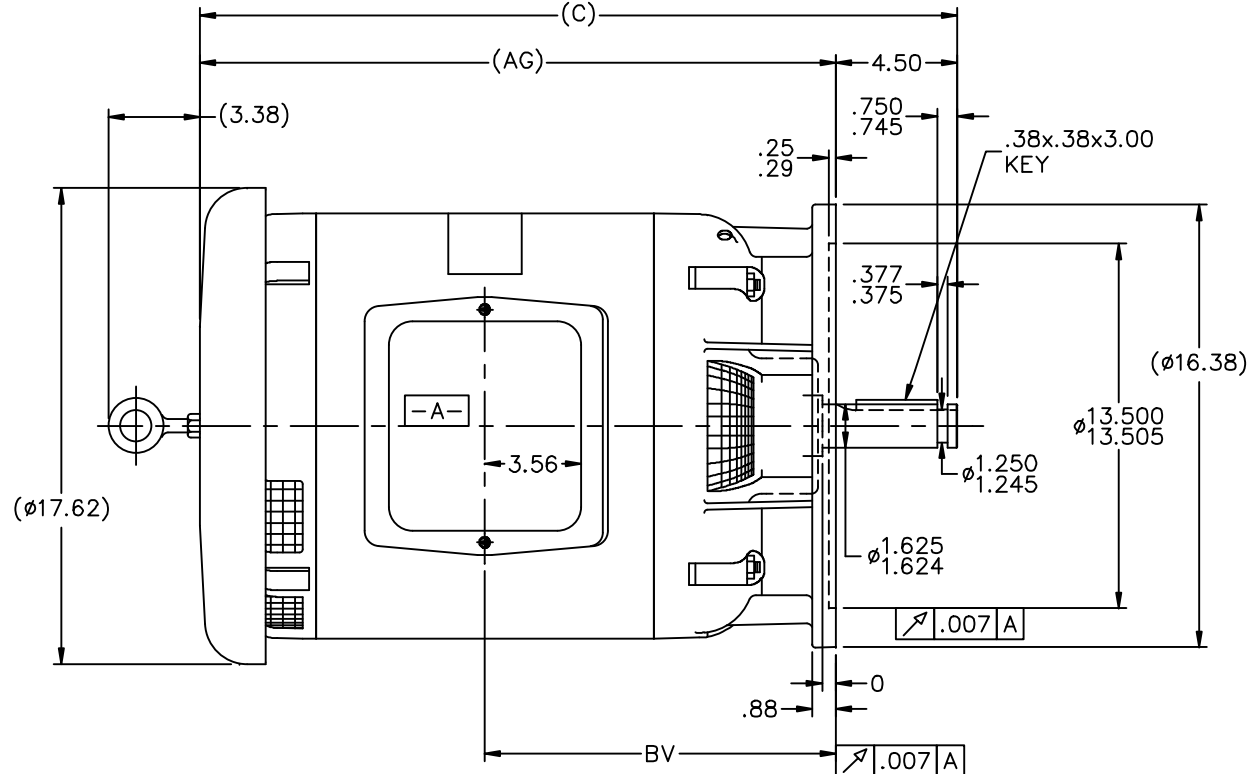


### Nameplate Specifications

Output HP	20 Hp	Output KW	14.9 kW
Frequency	60 Hz	Voltage	230/460 V
Current	60.0/30.0 A	Speed	865 rpm
Service Factor	1.15	Phase	3
Efficiency	86.5 %	Power Factor	72
Duty	Continuous	Insulation Class	F
Design Code	B	KVA Code	F
Frame	324HPV	Enclosure	Drip Proof
Thermal Protection	No Protection	Ambient Temperature	40 °C
Drive End Bearing Size	6311	Opp Drive End Bearing Size	6311
UL	Recognized	CSA	Y
CE	Y	IP Code	22
Number of Speeds	1		

### Technical Specifications

Electrical Type	Squirrel Cage Induction Run	Starting Method	Across The Line
Poles	8	Rotation	Reversible
Resistance Main	.54 Ohms	Mounting	Round
Motor Orientation	Shaft Down	Drive End Bearing	Ball
Opp Drive End Bearing	Ball	Frame Material	Rolled Steel
Shaft Type	HP	Overall Length	30.56 in
Frame Length	12.50 in	Shaft Diameter	1.625 in
Shaft Extension	4.5 in	Assembly/Box Mounting	F1/F2 CAPABLE
Outline Drawing	B-SS28314-1250	Connection Drawing	A-EE7308




NOTES:

1. C'BOX CAN BE ROTATED IN 90° STEP.
2. NAMEPLATE TO BE READ FROM SHAFT END OF MOTOR
3. MAX. SHAFT RUNOUT .002

1. C'BOX CAN BE ROTATED IN 90° STEP.
2. NAMEPLATE TO BE READ FROM SHAFT END OF MOTOR
3. MAX. SHAFT RUNOUT .002

DASH	FRAME	C	AG	BV
1250	320	28.06	23.56	13.00
1400	320	29.56	25.06	13.75
1450	320	30.06	25.56	14.00
1500	320	30.56	26.06	14.12

14	REVISED NOTE # 2 (ECN 23047)	REP 01-16-2012	BW	TOLERANCES UNLESS SPECIFIED		DRAWN MJD 01-27-1999	
15	ECN 16735	NJS 6/21/2010	BW	DEC. INCHES		CHK	ML 02-01-1999
14	REVISED NAMEPLATE LOCATION 09-3901	MSG 9/22/2009	DR	X ±.1		APPD	DD 02-01-1999
13	REDRAWN IN AUTOCAD	TAT 07-22-2004	ML	.XX ±.03		SCALE	7=32
12	REVISED TO NEC CONDUIT BOX CN 28428	BJW 02-04-2000		.XXX ±.005		REF	
11	FRAME TYPES NOW 320 CN 27400-327	DRS 08-23-1999		.XXXX ±.0005	MAT'L	FMF	
NO.	REVISION	BY & DATE	CHK	ANG ±7°30"	FINISH	PREV	
THIS DRAWING IN DESIGN AND DETAIL IS OUR PROPERTY AND MUST NOT BE USED EXCEPT IN CONNECTION WITH OUR WORK. ALL RIGHTS OF DESIGN AND INVENTION ARE RESERVED. THIS IS AN ELECTRONICALLY GENERATED DOCUMENT - DO NOT SCALE THIS PRINT					RFP	CAD FILE ss28314	
			DIST LB			SIZE B	DRAWING NO. SS28314
							PAGE OF 16



				TOLERANCES UNLESS SPECIFIED		 <b>Regal</b> Beloit America, Inc.	DRAWN	RM	11/20/1990		
5	CHG TO REGAL LOGO	SL 09/10/2015	AB	DEC.	INCHES		CHK	ML	11/21/1990		
4	REVISED IEC NOTATIONS	MSG 11/15/2011	CMN	.X	±.1		APPD	SAS	04/24/2003		
3	ADDED IEC NOTATIONS... (U1), (V1) ETC. MU95194	MSG 5/10/2010	MJS	.XX	±.02		SCALE		1=1		
2	ADDED THE OPTIONAL CORD CONNECTION MU46318	RDH 04/24/2003	DRS	.XXX	±.005	TITLE CONNECTION DIAGRAM 3ø – DUAL VOLTAGE MOTOR		REF			
1	REDRAWN	RM 11/20/1990		.XXXX	±.0005	MAT'L.		FMF			
NO.	REVISION	BY & DATE	CHK	ANG	±7"30"	FINISH		PREV			
THIS DRAWING IN DESIGN AND DETAIL IS OUR PROPERTY AND MUST NOT BE USED EXCEPT IN CONNECTION WITH OUR WORK ALL RIGHTS OF DESIGN AND INVENTION ARE RESERVED THIS IS AN ELECTRONICALLY GENERATED DOCUMENT – DO NOT SCALE THIS PRINT			RFP		CAD FILE ee7308		SIZE	DRAWING NO.	PAGE	OF	REV.
			DIST WP				A	EE7308			

THIS DRAWING IN DESIGN AND DETAIL IS OUR PROPERTY AND MUST NOT BE USED EXCEPT  
IN CONNECTION WITH OUR WORK ALL RIGHTS OF DESIGN AND INVENTION ARE RESERVED  
THIS IS AN ELECTRONICALLY GENERATED DOCUMENT - DO NOT SCALE THIS PRINT