

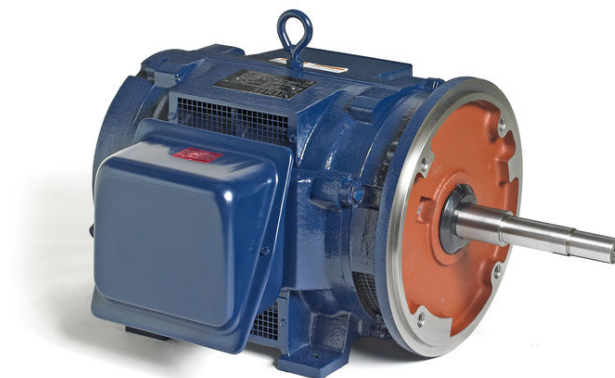
PRODUCT INFORMATION PACKET

marathon®
Motors

Model No: 324TTDP8610

Catalog No: M133

Other Purpose Motor, 50 & 40 HP, 3 Ph, 60 & 50 Hz, 230/460 & 190/380 V, 3600 & 3000 RPM,
324JP Frame, DP



Regal and Marathon are trademarks of Regal Rexnord Corporation or one of its affiliated companies.

©2023 Regal Rexnord Corporation, All Rights Reserved. MC017097E

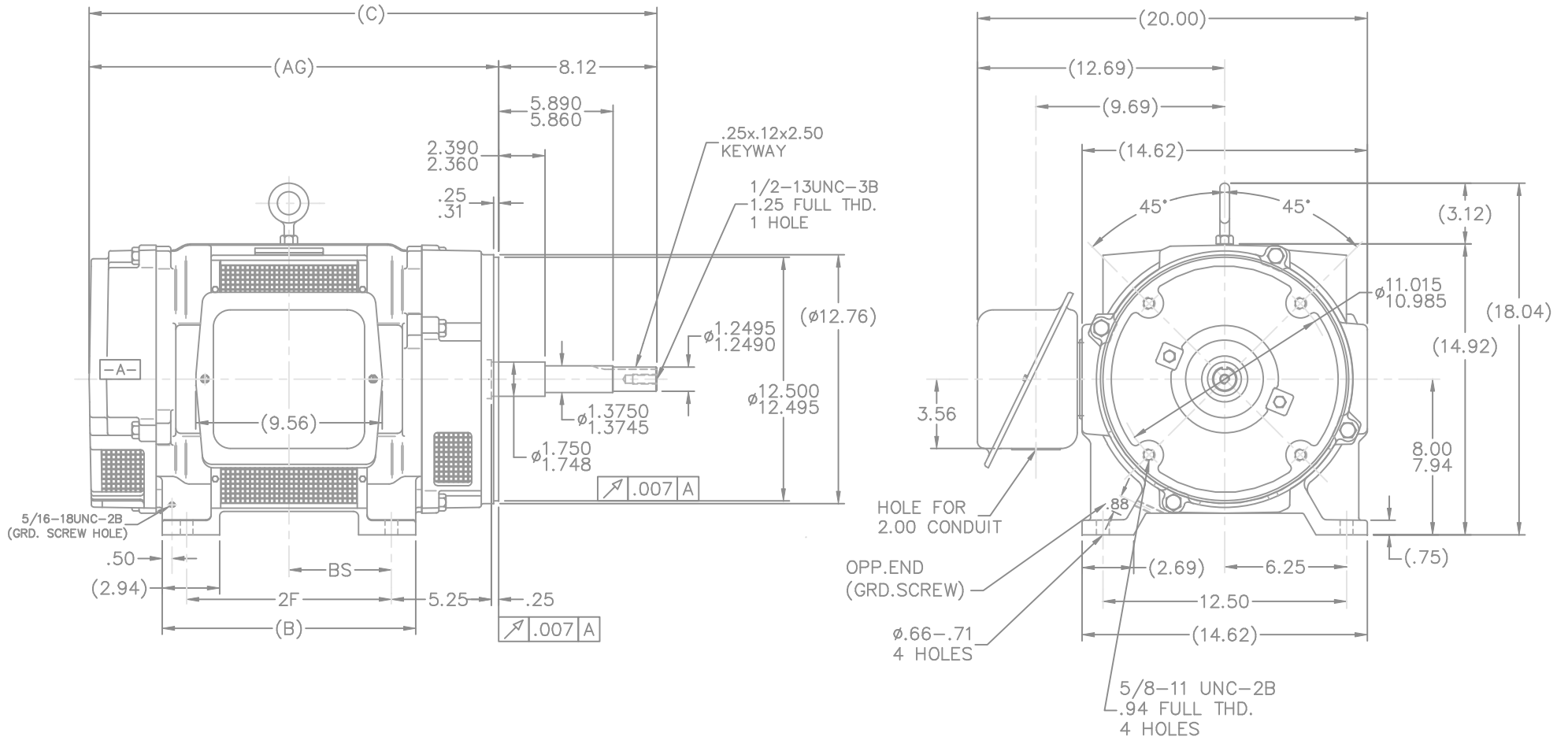
RegalRexnord

Nameplate Specifications

Phase	3	Output HP	50 & 40 Hp
Output KW	37.0 & 30.0 kW	Voltage	230/460 & 190/380 V
Speed	3550 & 2955 rpm	Service Factor	1.15 & 1.0
Frame	324JP	Enclosure	Drip Proof
Thermal Protection	No Protection	Efficiency	89.5 & 91 %
Ambient Temperature	40 °C	Frequency	60 & 50 Hz
Current	124/62 & 118/59 A	Power Factor	84
Duty	Continuous	Insulation Class	B
Design Code	B	KVA Code	F
Drive End Bearing Size	6312	Opp Drive End Bearing Size	6311
UL	No	CSA	Y
CE	Y	IP Code	23
Number of Speeds	1		

Technical Specifications

Electrical Type	Squirrel Cage Induction Run	Starting Method	Across The Line
Poles	2	Rotation	Reversible
Resistance Main	.24 Ohms	Mounting	Rigid Base
Motor Orientation	Horizontal	Drive End Bearing	Ball
Opp Drive End Bearing	Ball	Frame Material	Cast Iron
Shaft Type	JP	Overall Length	29.12 in
Frame Length	13.62 in	Shaft Diameter	1.250 in
Shaft Extension	8.12 in	Assembly/Box Mounting	F1/F2 CAPABLE
Outline Drawing	B-SS200378-1362	Connection Drawing	A-EE7308K



- NOTES:
1. BOX CAN BE ROTATED IN 90° STEPS
 2. BOX CAN BE MOUNTED ON OPPOSITE SIDE BY REMOVING BRACKETS AND TURNING FRAME 180°
 3. NAMEPLATE TO BE READ FROM CONDUIT BOX SIDE OF MOTOR

DASH	FRAME	B	C	2F	BS	AG
1362	324JP	13.00	29.12	10.50	5.25	21.00
1512	326JP	14.50	30.62	12.00	6.00	22.50

				TOLERANCES UNLESS SPECIFIED		MARATHON ELECTRIC		DRAWN DA 05-22-1992			
				DEC.	INCHES			CHK	ML 05-26-1992		
7	REDRAWN IN AUTOCAD	TAT	07-13-2004	ML	.X	±.1			APPD	GK 05-26-1992	
6	ADDED .03 TO TOLERANCE BLOCK	CN 29200-1069	DRS 11-10-2000		.XX	±.03	TITLE OUTLINE - DR.PR. - CAST IRON		SCALE	1=5	
5	REVISED TO NEC CONDUIT BOX	CN 28428	NJS 02-16-2000		.XXX	±.005	320JP FR.-BB-TS D.E.V.-STL C' BOX-TDP		REF		
4	REMOVED UNDERCUTS	CN 21725-1139	DRS 12-10-1996		.XXXX	±.0005	MAT'L		FMF		
NO.	REVISION	BY & DATE		CHK	ANG	±7'30"	FINISH	PREV			
THIS DRAWING IN DESIGN AND DETAIL IS OUR PROPERTY AND MUST NOT BE USED EXCEPT IN CONNECTION WITH OUR WORK ALL RIGHTS OF DESIGN AND INVENTION ARE RESERVED THIS IS AN ELECTRONICALLY GENERATED DOCUMENT - DO NOT SCALE THIS PRINT				RFP	CAD FILE ss200378			SIZE	DRAWING NO.	PAGE OF	REV.
				DIST	LB			B	SS200378	7	7

LOW VOLTAGE



HIGH VOLTAGE



VIEW OF TERMINAL END

				TOLERANCES UNLESS SPECIFIED		 REGAL - BELOIT CORPORATION	DRAWN PGK 06-04-1997	
NO.	REVISION	BY & DATE	CHK	ANG	±		INCHES	CHK
E	CORRECTED IEC MARKINGS ECD-0111208	WGJ 01-23-2017	EMH	DEC.				
D	RE-DRAWN WITH REGAL LOGO ECD-0110493	WGJ 09-30-2016	EMH	.X	±.1			APPD GK 06-15-1997
8	ADDED IEC DESIGNATIONS MU95020	TJW 4/30/2010	MJS	.XX	±.02	TITLE	CONNECTION DIAGRAM	
7	REVISED HIGH VOLTAGE L2 WAS L3 CN52600-354	MRB 09-21-1998		.XXX	±.005		DELTA CON. - 3Ø - 9 LEADS	
6	REDRAWN ON CADD	PGK 06-05-1997		.XXXX	±.0005	MAT'L.	FMF	
					±7'30"	FINISH	PREV	
THIS DRAWING IN DESIGN AND DETAIL IS OUR PROPERTY AND MUST NOT BE USED EXCEPT IN CONNECTION WITH OUR WORK ALL RIGHTS OF DESIGN AND INVENTION ARE RESERVED THIS IS AN ELECTRONICALLY GENERATED DOCUMENT - DO NOT SCALE THIS PRINT						RFP	CAD FILE EE7308K	
						DIST	SIZE	DRAWING NO. PAGE OF
							A	EE7308K
								REV. E

Data Sheet

Date: 12/12/2018
 Customer: _____
 Attention: _____
 Submitted by: FAREEDA DUDEKULA



324TDP8610

Submittal

Data @ 460 V

Motor Load Data

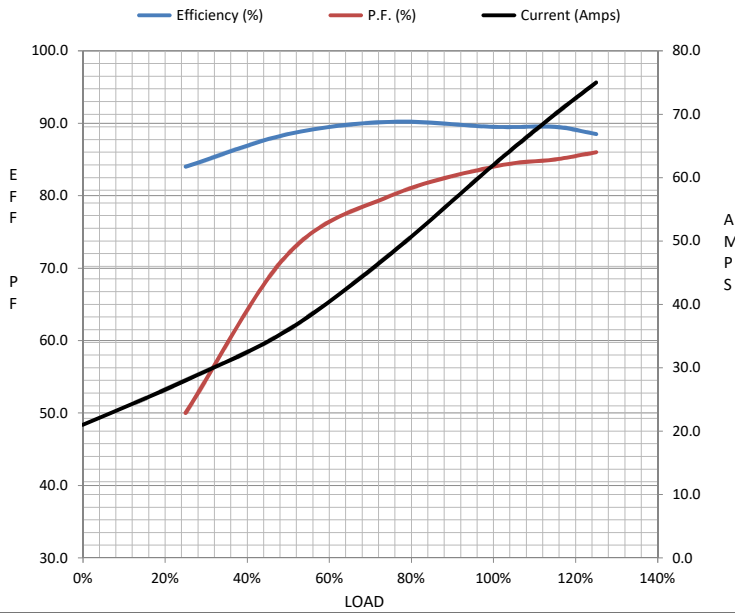
Load	0%	25%	50%	75%	100%	115%	125%	LR
Current (Amps)	21.0	28.0	36.0	48.0	62.0	70.0	75.0	340
Torque (ft-lb)	0.00	18.5	36.5	55.5	74.0	85.5	93.0	96.5
RPM	3600	3590	3575	3565	3550	3,545	3540	0
Efficiency (%)		84.0	88.5	90.2	89.5	89.5	88.5	
P.F. (%)	9.5	50.0	72.0	80.0	84.0	85.0	86.0	38.0

Motor Speed Data

	LR	Pull-Up	BD	Rated	Idle
Speed (RPM)	0	1800	3350	3550	3600
Current (Amps)	340	325	206	62.0	21.0
Torque (ft-lb)	96.5	85.0	190	74.0	0.00

Information Block

HP	50.0			
Sync. RPM	3600			
Frame	324			
Enclosure	DP			
Construction	TDS			
Voltage	230/460#190/380 V			
Frequency	60 Hz			
Design	B			
LR Code letter	F			
Service Factor	1.15			
Temp Rise @ FL	45 °C			
Duty	CONT			
Ambient	40 °C			
Elevation	1,000 feet			
Rotor/Shaft wk ²	2.60 Lb-Ft ²			
Ref Wdg	K2862101 NONE			
Sound Pressure @ 1M	82 dBA			
VFD Rating	NONE			
Outline Dwg	B-SS200378-1362			
Conn. Diag	A-EE7308K			
Additional Specifications:				
0				
0				
EQUIV CKT (OHMS / PHASE)				
R1	R2	X1	X2	Xm
0.1500	0.0650	0.4940	0.3520	12.9500



Speed - Torque Curve

