

PRODUCT INFORMATION PACKET

marathon®
Motors

Model No: 324TTDP7073

Catalog No: M130

Close-Coupled Pump Motor, 40 & 30 HP, 3 Ph, 60 & 50 Hz, 230/460 & 190/380 V, 1800 & 1500 RPM,
324JP Frame, DP

Regal and Marathon are trademarks of Regal Rexnord Corporation or one of its affiliated companies.

©2023 Regal Rexnord Corporation, All Rights Reserved. MC017097E

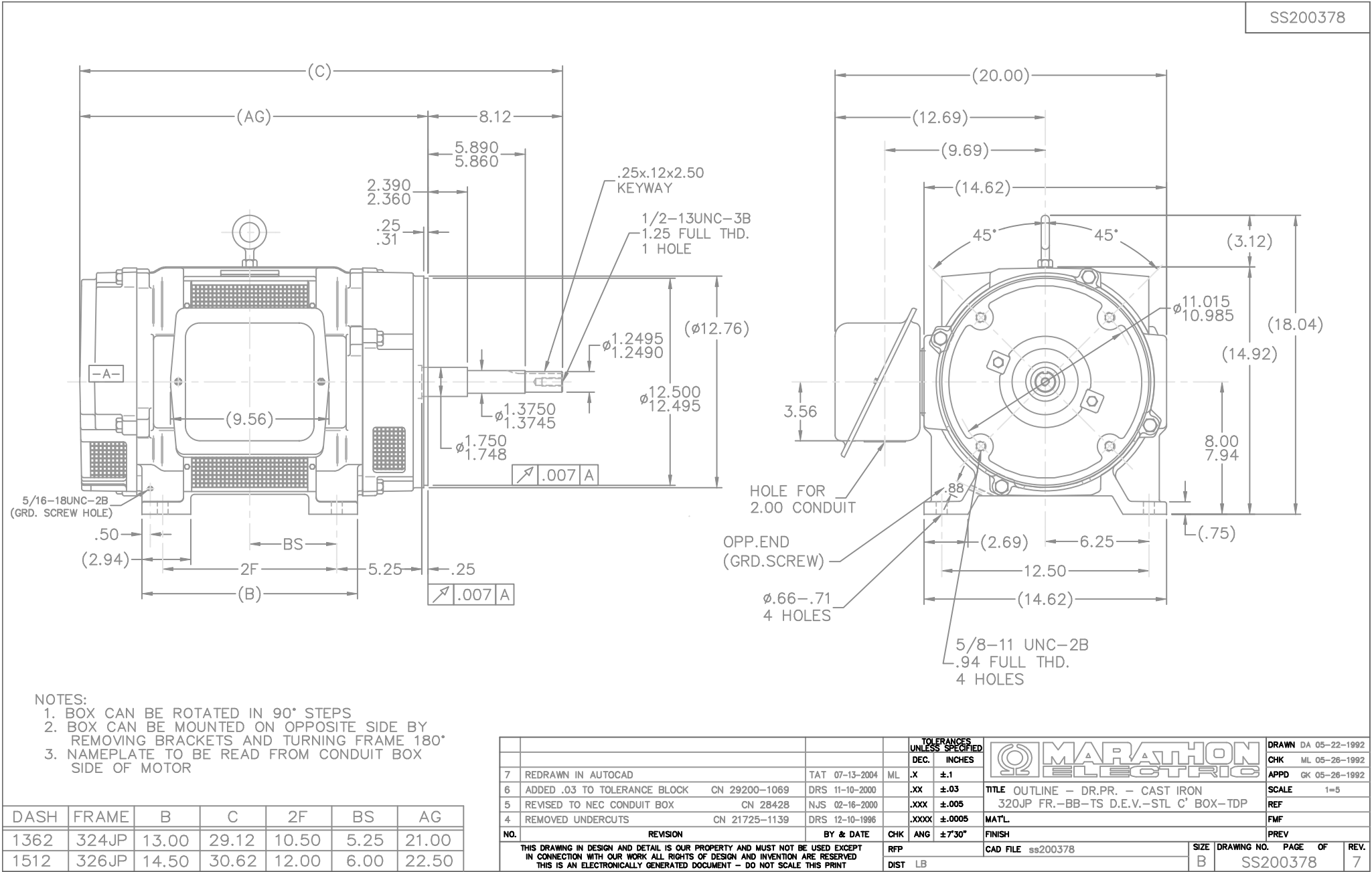
RegalRexnord

Nameplate Specifications

| | | | |
|------------------------|------------------|----------------------------|---------------------|
| Phase | 3 | Output HP | 40 & 30 Hp |
| Output KW | 30.0 & 22.4 kW | Voltage | 230/460 & 190/380 V |
| Speed | 1765 & 1465 rpm | Service Factor | 1.15 & 1.0 |
| Frame | 324JP | Enclosure | Drip Proof |
| Thermal Protection | No Protection | Efficiency | 89.5 & 89.5 % |
| Ambient Temperature | 40 °C | Frequency | 60 & 50 Hz |
| Current | 106/53 & 96/48 A | Power Factor | 78 |
| Duty | Continuous | Insulation Class | F |
| Design Code | B | KVA Code | F |
| Drive End Bearing Size | 6312 | Opp Drive End Bearing Size | 6311 |
| UL | No | CSA | Y |
| CE | Y | IP Code | 23 |
| Number of Speeds | 1 | | |

Technical Specifications

| | | | |
|-----------------------|-----------------------------|-----------------------|-----------------|
| Electrical Type | Squirrel Cage Induction Run | Starting Method | Across The Line |
| Poles | 4 | Rotation | Reversible |
| Resistance Main | .256 Ohms | Mounting | Rigid Base |
| Motor Orientation | Horizontal | Drive End Bearing | Ball |
| Opp Drive End Bearing | Ball | Frame Material | Cast Iron |
| Shaft Type | JP | Overall Length | 29.12 in |
| Frame Length | 13.62 in | Shaft Diameter | 1.250 in |
| Shaft Extension | 8.12 in | Assembly/Box Mounting | F1/F2 CAPABLE |
| Connection Drawing | A-EE7308 | Outline Drawing | B-SS200378-1362 |





| NO. | REVISION | BY & DATE | CHK | ANG | TOLERANCES UNLESS SPECIFIED | FINISH | DRAWING NO. | PAGE | OF | REV. |
|----------------------------------------------------------------------------------------------------------------------------------------------------------------------------------------------------------------------------------|------------------------------------------------|----------------|-----|-------|--------------------------------|---------|-----------------|--------|--------------------|--------|
| | | | | | | | | | | |
| 5 | CHG TO REGAL LOGO | SL 09/10/2015 | AB | DEC. | INCHES | | | | | |
| 4 | REVISED IEC NOTATIONS | MSG 11/15/2011 | CMN | .X | ±.1 | | | | | |
| 3 | ADDED IEC NOTATIONS... (U1), (V1) ETC. MU95194 | MSG 5/10/2010 | MJS | .XX | ±.02 | | | | | |
| 2 | ADDED THE OPTIONAL CORD CONNECTION MU46318 | RDH 04/24/2003 | DRS | .XXX | ±.005 | | | | | |
| 1 | REDRAWN | RM 11/20/1990 | | .XXXX | ±.0005 | | | | | |
| | | | | | ±7'30" | | | | | |
| THIS DRAWING IN DESIGN AND DETAIL IS OUR PROPERTY AND MUST NOT BE USED EXCEPT IN CONNECTION WITH OUR WORK ALL RIGHTS OF DESIGN AND INVENTION ARE RESERVED THIS IS AN ELECTRONICALLY GENERATED DOCUMENT - DO NOT SCALE THIS PRINT | | | | | | RFP | CAD FILE ee7308 | SIZE A | DRAWING NO. EE7308 | PAGE 5 |
| | | | | | | DIST WP | | | | |