

# PRODUCT INFORMATION PACKET

**marathon®**  
Motors

Model No: 324TTDCA6095

Catalog No: GT2529

25 HP Close-Coupled Pump Motor, 3 phase, 1200 RPM, 575 V, 324JPV Frame, ODP  
Close-Coupled Pump Motors



Regal and Marathon are trademarks of Regal Rexnord Corporation or one of its affiliated companies.  
©2021 Regal Rexnord Corporation, All Rights Reserved. MC017097E

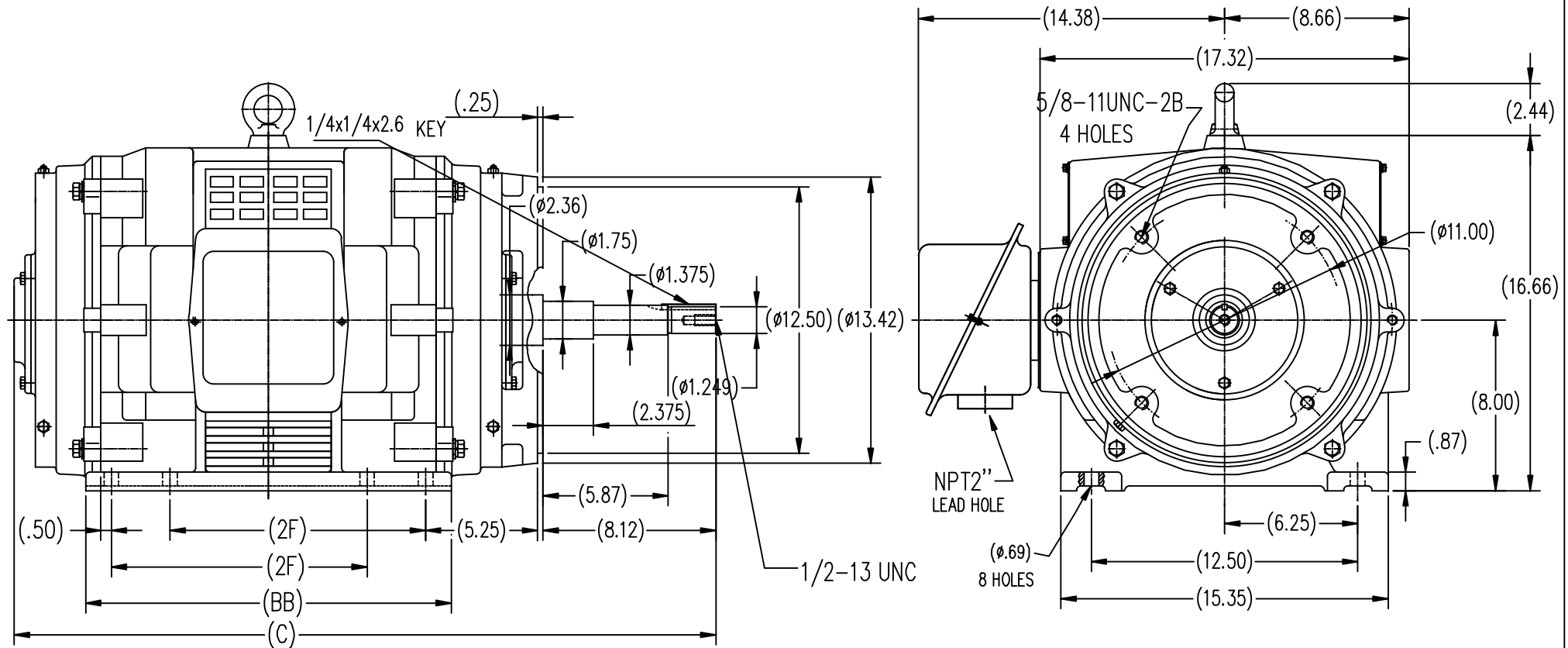
**RegalRexnord**

### Nameplate Specifications


Output HP	25 Hp	Output KW	18.7 kW
Frequency	60 Hz	Voltage	575 V
Current	27.2 A	Speed	1190 rpm
Service Factor	1.15	Phase	3
Efficiency	93 %	Power Factor	74
Duty	Continuous	Insulation Class	F
Design Code	B	KVA Code	G
Frame	324JPV	Enclosure	Drip Proof
Thermal Protection	No	Ambient Temperature	40 °C
Drive End Bearing Size	6312	Opp Drive End Bearing Size	6311
UL	Recognized	CSA	Y
CE	Y	IP Code	12
Number of Speeds	1		

### Technical Specifications

Electrical Type	Squirrel Cage Inverter Rated	Starting Method	Line Or Inverter
Poles	6	Rotation	Reversible
Resistance Main	.3287 Ohms	Mounting	Rigid Base
Motor Orientation	Horizontal Or Shaft Down	Drive End Bearing	Ball
Opp Drive End Bearing	Ball	Frame Material	Cast Iron
Shaft Type	JP	Overall Length	31.82 in
Shaft Diameter	1.250 in	Shaft Extension	8.12 in
Assembly/Box Mounting	F1/F2 CAPABLE		
Outline Drawing	SS620574-324T	Connection Drawing	EE7300



324T	10.50	15.99	31.82
326T	12.00	17.17	33.00
FRAME	2F	BB	C

TOLERANCES UNLESS SPECIFIED				 <b>REGAL-BELOIT CORPORATION</b>		DRAWN VY 05-23-2012	
DEC.	INCHES					CHK	ZYH 05-23-2012
.X	±.1			<b>TITLE</b> OUTLINE ODP-324/326JP FR-CAST IRON	<b>MAT'L.</b> FINISH	APPD	WGH 05-23-2012
.XX	±.03					SCALE	1=6
.XXX	±.005					REF	
.XXX	±.0005					FMF	HWADA
.XXX	±.0005					PREV	
NO.	REVISION	BY & DATE	CHK	ANG	±1/2	FINISH	
THIS DRAWING IN DESIGN AND DETAIL IS OUR PROPERTY AND MUST NOT BE USED EXCEPT IN CONNECTION WITH OUR WORK. ALL RIGHTS OF DESIGN AND INVENTION ARE RESERVED. THIS IS AN ELECTRONICALLY GENERATED DOCUMENT - DO NOT SCALE THIS PRINT.				RFP	CAD FILE	SS620574	SIZE
				DIST			DRAWING NO.
							B
							SS620574
							REV.

# THREE PHASE - SINGLE VOLTAGE MOTOR - CONDUIT BOX @ 'A'

TO REVERSE ROTATION:  
INTERCHANGE ANY TWO  
LINE LEAD CONNECTIONS.

## TERMINAL BLOCK WHEN SPECIFIED



### IF MOTOR HAS 6 LEADS



A-9806 DECAL

### OPTIONAL CORD CONNECTION



## VIEW OF TERMINAL END

DRAWING REVISION AB	REVISION BY JJB	DATE 06-27-2017
ECO ECO-0125361	APPROVED BY TB	DATE 06-27-2017
ECO DESCRIPTION UPDATED TO CURRENT STANDARDS		
<small>COPYRIGHT REGAL BELOIT AMERICA, INC. ALL RIGHTS RESERVED.          PROPRIETARY AND CONFIDENTIAL INFORMATION - THIS DOCUMENT IS THE PROPERTY OF          REGAL BELOIT AMERICA, INC. ("OWNER") AND CONTAINS OWNER'S PROPRIETARY          INFORMATION. ANY PERSON, CORPORATION OR OTHER FIRM RECEIVING IT IS DEEMED,          BY RECEIVING IT, TO AGREE THAT IT, AND/OR ANY PART OF IT, SHALL NOT BE DISCLOSED          TO ANY PERSON, CORPORATION OR OTHER ENTITY, DUPLICATED, AND/OR USED, EXCEPT          AS EXPRESSLY APPROVED IN WRITING IN ADVANCE BY OWNER. THIS DOCUMENT SHALL          BE RETURNED TO OWNER UPON REQUEST. IT MAY BE SUBJECT TO CERTAIN          RESTRICTIONS UNDER APPLICABLE EXPORT CONTROL LAWS AND REGULATIONS.</small>		

DRAWN BY DA
DATE 03-26-1993
APPROVED BY TB
DATE 03-26-1993
REFERENCE
THIRD ANGLE PROJECTION



Regal Beloit America, Inc.

DESCRIPTION  
**CONNECTION DIAGRAM**  
EXTERNAL - SINGLE VOLTAGE - 3Ø MOTOR

MATERIAL PROCESS/FINISH

SIZE A	DRAWING NUMBER EE7300	SHEET 1 OF 1
-----------	--------------------------	-----------------

## CERTIFICATION DATA SHEET

Model#: 324TTDCA6095 AA

WINDING#: CHT32460002 NONE 3

CONN. DIAGRAM: EE7300

ASSEMBLY: F1/F2 CAPABLE

OUTLINE: SS620574

## TYPICAL MOTOR PERFORMANCE DATA

HP	KW	SYNC. RPM	F.L. RPM	FRAME	ENCLOSURE	KVA CODE	DESIGN
25	18.7	1200	1190	324JPV	DP	G	B

PH	Hz	VOLTS	FL AMPS	START TYPE	DUTY	INSL	S.F	AMB°C	ELEVATION
3	60	575	27.2	LINE OR INVERTER	CONTINUOU S	F7	1.15	40	3300

FULL LOAD EFF: 93	3/4 LOAD EFF: 93	1/2 LOAD EFF: 91.7	GTD. EFF	ELEC. TYPE	NO LOAD AMPS
FULL LOAD PF: 74	3/4 LOAD PF: 69	1/2 LOAD PF: 57	92.4	SQ CAGE INV RATED	13.2

F.L. TORQUE	LOCKED ROTOR AMPS	L.R. TORQUE	B.D. TORQUE	F.L. RISE°C
111 LB-FT	136	188 LB-FT 169	243 LB-FT 219	35

SOUND PRESSURE @ 3 FT.	SOUND POWER	ROTOR WK^2	MAX. WK^2	SAFE STALL TIME	STARTS /HOUR	APPROX. MOTOR WGT
69 dBA	79 dBA	10.5 LB-FT^2	400 LB-FT^2	20 SEC.	2	475 LBS.

## \*\*\* SUPPLEMENTAL INFORMATION \*\*\*

DE BRACKET TYPE	ODE BRACKET TYPE	MOUNT TYPE	ORIENTATION	SEVERE DUTY	HAZARDOUS LOCATION	DRIP COVER	SCREENS	PAINT
C-FACE	STANDARD	RIGID	HORIZONTAL OR SHAFT DOWN	FALSE	NONE	FALSE	NONE	BLUE (ENAMEL)

BEARINGS		GREASE	SHAFT TYPE	SPECIAL DE	SPECIAL ODE	SHAFT MATERIAL	FRAME MATERIAL
DE	OPE						
BALL	BALL						
6312	6311	POLYREX EM	JP	NONE	NONE	1045 HOT ROLLED (C-204)	CAST IRON

THERMO-PROTECTORS				THERMISTORS	CONTROL	SPACE /n HEATERS
THERMOSTATS	PROTECTORS	WDG RTDs	BRG RTDs			
NONE	NOT	NONE	NONE	NONE	FALSE	NONE VOLTS

If Inverter equals NONE, contact factory for further  
information

INVERTER TORQUE: VARIABLE 10:1
INV. HP SPEED RANGE: NONE
ENCODER: NONE
NONE NONE
NONE NONE PPR
BRAKE: NONE NONE
NONE P/N NONE
NONE NONE
NONE FT-LB NONE V NONE Hz

\*  
N  
O  
T  
E  
S  
\*

DATE: 06/21/2017 04:24:18 AM

FORM 3531 REV.3 02/07/99

\*\* Subject to change without notice.

## Data Sheet

Date: 29-06-2017

Customer:

Attention:

Submitted by: FAREEDA DUDEKULA



324TTDCA6095

Submittal

Data @ 575 V

## Motor Load Data

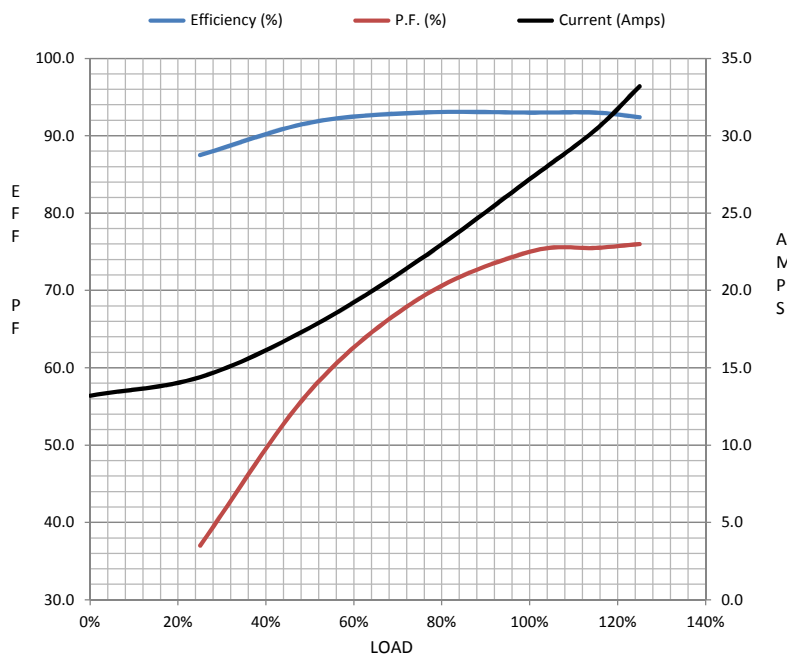
Load	0%	25%	50%	75%	100%	115%	125%	LR	
Current (Amps)	13.2	14.4	17.6	22.0	27.2	30.4	33.2	136	
Torque (ft-lb)	0.00	27.5	55.0	82.5	111	127	139	188	
RPM	1200	1198	1195	1190	1188	1,185	1182	0	
Efficiency (%)		87.5	91.7	93.0	93.0	93.0	92.4		
P.F. (%)	4.5	37.0	57.0	69.0	75.0	75.5	76.0	37.0	

## Motor Speed Data

	LR	Pull-Up	BD	Rated	Idle
Speed (RPM)	0	600	1125	1188	1200
Current (Amps)	136	120	92.0	27.2	13.2
Torque (ft-lb)	188	175	243	111	0.00

## Information Block

HP	25.0			
Sync. RPM	1200			
Frame	324			
Enclosure	DP			
Construction	TDC			
Voltage	575 V			
Frequency	60 Hz			
Design	B			
LR Code letter	G			
Service Factor	1.15			
Temp Rise @ FL	35 ° C			
Duty	CONT			
Ambient	40 ° C			
Elevation	1,000 feet			
Rotor/Shaft wk²	10.5 Lb-Ft²			
Ref Wdg	CHT32460002 NONE			
Sound Pressure @ 1M	69 dBA			
VFD Rating	VARIABLE 10:1			
Outline Dwg	SS620574			
Conn. Diag	EE7300			
Additional Specifications:				
0				
365THFS8036				
EQUIV CKT (OHMS / PHASE)				
R1	R2	X1	X2	Xm
0.3210	0.1380	1.1380	2.3580	24.8190



## Speed -Torque Curve

