

PRODUCT INFORMATION PACKET

Model No: 324TTDC6076

Catalog No: U798

XRI® General Purpose General Purpose Motor, 25 & 20 HP, 3 Ph, 60 & 50 Hz, 208-230/460 & 190/380 V,
1200 & 1000 RPM, 324T Frame, DP



Regal and Marathon are trademarks of Regal Rexnord Corporation or one of its affiliated companies.

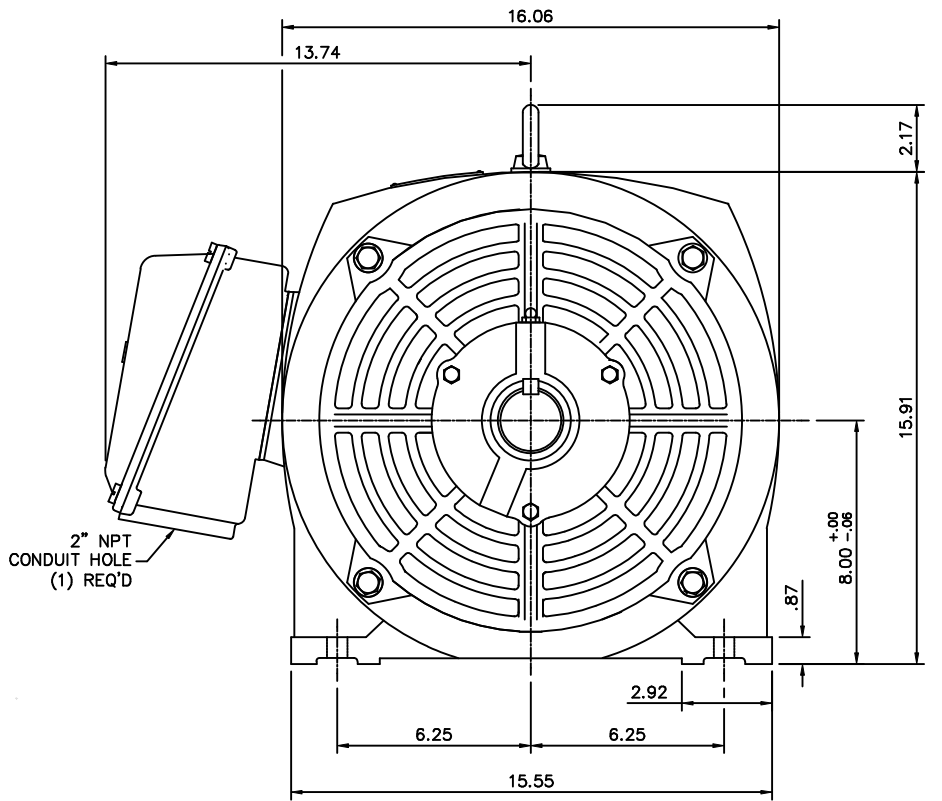
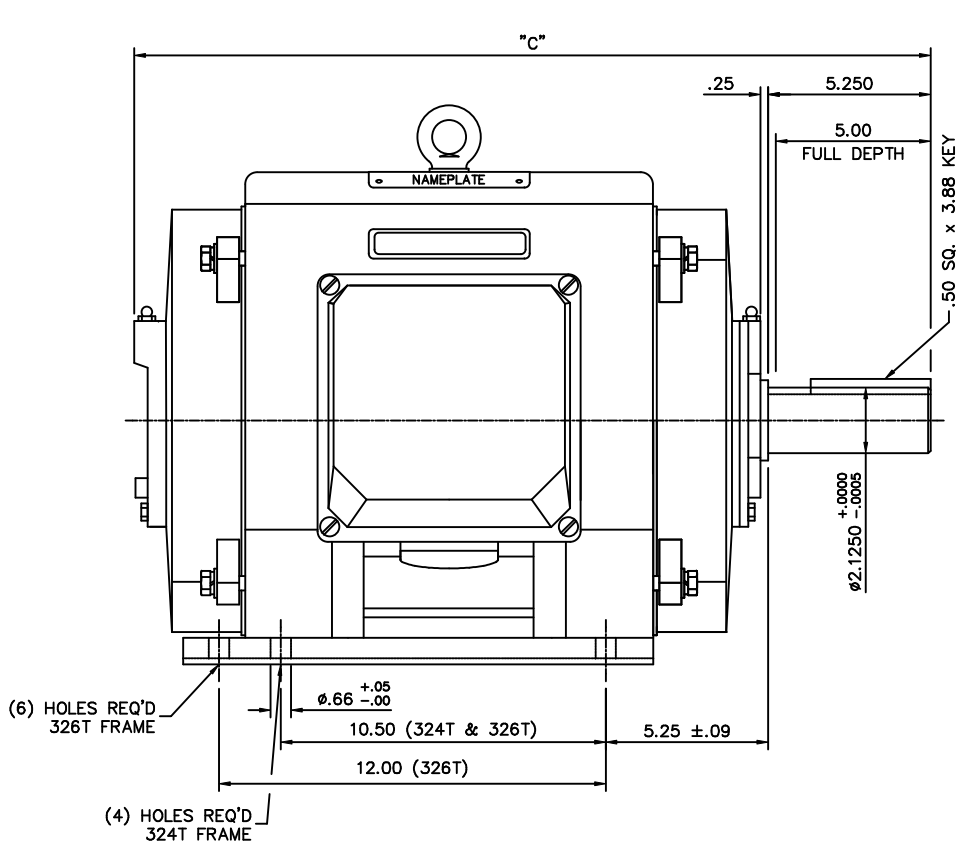
©2023 Regal Rexnord Corporation, All Rights Reserved. MC017097E

Nameplate Specifications

Phase	3	Output HP	25 & 20 Hp
Output KW	18.7 & 14.9 kW	Voltage	208-230/460 & 190/380 V
Speed	1190 & 990 rpm	Service Factor	1.15 & 1.15
Frame	324T	Enclosure	Drip Proof
Thermal Protection	No Protection	Efficiency	93 %
Ambient Temperature	40 °C	Frequency	60 & 50 Hz
Current	72-67/33.5 & 65/32.5 A	Power Factor	75
Duty	Continuous	Insulation Class	F
Design Code	B	KVA Code	G
Drive End Bearing Size	6312	Opp Drive End Bearing Size	6212
UL	Recognized	CSA	Y
CE	Y	IP Code	12
Number of Speeds	1		

Technical Specifications

Electrical Type	Squirrel Cage Induction Run	Starting Method	Across The Line
Poles	6	Rotation	Reversible
Resistance Main	.232 Ohms	Mounting	Rigid Base
Motor Orientation	Horizontal	Drive End Bearing	Ball
Opp Drive End Bearing	Ball	Frame Material	Cast Iron
Shaft Type	T	Overall Length	26.02 in
Shaft Diameter	2.125 in	Shaft Extension	5.25 in
Assembly/Box Mounting	F1 ONLY		
Connection Drawing	004172-01ME	Outline Drawing	16955460ME



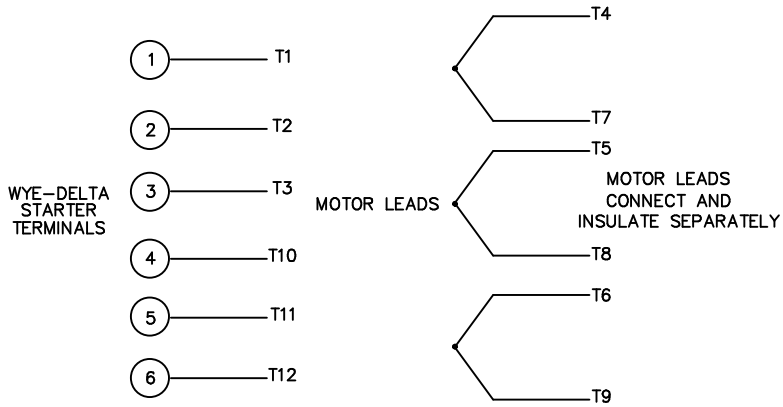
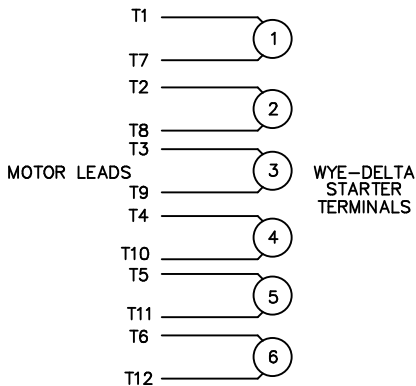
FRAME DESIGN	"C"
324T	26.02
326T	27.52

		TOLERANCES UNLESS SPECIFIED			DRAWN CTO 04-25-2002	
NO.	REVISION	DEC.	INCHES		CHK	ML
		.X	±.1		SB	05-21-2002
		.XX	±.03		APPD	05-21-2002
		.XXX	±.005		SCALE	1=1
		.XXXX	±.0005		TITLE	OUTLINE 320T FRAME DRIP PROOF - RIGID
1	NEW DRAWING	CTO	05/21/02		MAT'L	CAST IRON
		BY & DATE			FINISH	
		CHK	ANG	±1/2"	PREV	
THIS DRAWING IN DESIGN AND DETAIL IS OUR PROPERTY AND MUST NOT BE USED EXCEPT IN CONNECTION WITH OUR WORK ALL RIGHTS OF DESIGN AND INVENTION ARE RESERVED THIS IS AN ELECTRONICALLY GENERATED DOCUMENT - DO NOT SCALE THIS PRINT				RFP	CAD FILE	16955460me
				DIST	SIZE	DRAWING NO.
					B	169554-60ME
						REV. 1

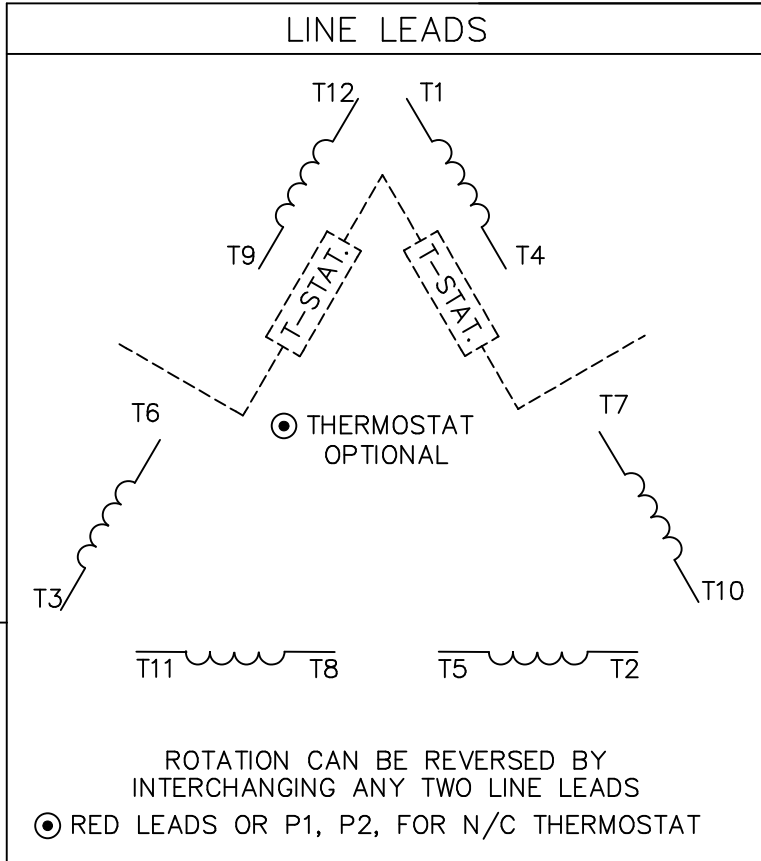
WYE - DELTA STARTING USEABLE ON 2, 4 AND 6 POLE MOTORS.

LOW VOLTAGE CONNECTION

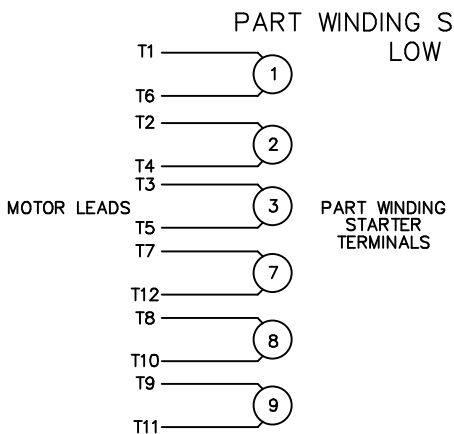
HIGH VOLTAGE CONNECTION



REFER TO THE WYE-DELTA STARTER CONNECTION INSTRUCTIONS FOR PROPER CONNECTION OF POWER LINES TO STARTER.



ROTATION CAN BE REVERSED BY INTERCHANGING ANY TWO LINE LEADS
 ● RED LEADS OR P1, P2, FOR N/C THERMOSTAT



REFER TO THE PART WINDING STARTER INSTRUCTIONS FOR PROPER CONNECTION OF POWER LINES TO STARTER.

REFER TO THE CUTLER-HAMMER OR EQUIV. FOR PROPER SELECTION OF OVERLOAD HEATER COILS.

ACROSS THE LINE START & RUN				
	LINE 1	LINE 2	LINE 3	JOIN & INSULATE SEPARATELY
HIGH VOLT	T1, T12	T2, T10	T3, T11	(T4, T7) (T5, T8) (T6, T9)
LOW VOLT	T1, T6 T7, T12	T2, T4 T8, T10	T3, T5 T9, T11	

				TOLERANCES UNLESS SPECIFIED				DRAWN RJW 07-19-2007	
				DEC.	INCHES			CHK ML 07-19-2007	
				.X	±.1			APPD GK 07-19-2007	
				.XX	±.02			SCALE 1=1	
				.XXX	±.005			REF MU61151	
				.XXXX	±.0005	MAT'L.		FMF	
NO.	REVISION	BY & DATE	CHK	ANG	±7'30"	FINISH		PREV	
THIS DRAWING IN DESIGN AND DETAIL IS OUR PROPERTY AND MUST NOT BE USED EXCEPT IN CONNECTION WITH OUR WORK ALL RIGHTS OF DESIGN AND INVENTION ARE RESERVED THIS IS AN ELECTRONICALLY GENERATED DOCUMENT - DO NOT SCALE THIS PRINT				RFP	07-19-2007	CAD FILE 004172-01ME		SIZE	DRAWING NO. PAGE 1 OF 1 REV.
				DIST	LB			A	004172-01ME

CERTIFICATION DATA SHEET

Model#: 324TTDC6076 AA **WINDING#:** T16106015 DR 3
CONN. DIAGRAM: 004172-01ME **ASSEMBLY:** F1 ONLY
OUTLINE: 169554-60ME

TYPICAL MOTOR PERFORMANCE DATA

HP	KW	SYNC. RPM	F.L. RPM	FRAME	ENCLOSURE	KVA CODE	DESIGN
25&20	18.7&14.9	1200	1190&990	324T	DP	G	B

PH	Hz	VOLTS	FL AMPS	START TYPE	DUTY	INSL	S.F	AMB°C	ELEVATION
3	60/50	208- 230/460#190/ 380	72- 67/33.5&65/32 .5	ACROSS THE LINE	CONTINUOU S	F2	1.15/1.15	40	3300

FULL LOAD EFF: 93	3/4 LOAD EFF: 93.3	1/2 LOAD EFF: 92.8	GTD. EFF	ELEC. TYPE	NO LOAD AMPS
FULL LOAD PF: 75	3/4 LOAD PF: 69.8	1/2 LOAD PF: 59.6	91.7	SQ CAGE IND RUN	29.8 / 14.9

F.L. TORQUE	LOCKED ROTOR AMPS	L.R. TORQUE	B.D. TORQUE	F.L. RISE°C
110.5 LB-FT	364 / 182	183 LB-FT 166	330 LB-FT 299	32

SOUND PRESSURE @ 3 FT.	SOUND POWER	ROTOR WK^2	MAX. WK^2	SAFE STALL TIME	STARTS /HOUR	APPROX. MOTOR WGT
49 dBA	59 dBA	- LB-FT^2	- LB-FT^2	15 SEC.	2	- LBS.

***** SUPPLEMENTAL INFORMATION *****

DE BRACKET TYPE	ODE BRACKET TYPE	MOUNT TYPE	ORIENTATION	SEVERE DUTY	HAZARDOUS LOCATION	DRIP COVER	SCREENS	PAINT
STANDARD	STANDARD	RIGID	HORIZONTAL	FALSE	NONE	FALSE	NONE	BLUE (ENAMEL)

BEARINGS		GREASE	SHAFT TYPE	SPECIAL DE	SPECIAL ODE	SHAFT MATERIAL	FRAME MATERIAL
DE	OPE						
BALL	BALL	POLYREX EM	T	NONE	NONE	1045 HOT ROLLED (C-204)	CAST IRON
6312	6212						

THERMO-PROTECTORS				THERMISTORS	CONTROL	SPACE /n HEATERS
THERMOSTATS	PROTECTORS	WDG RTDs	BRG RTDs			
NONE	NOT	NONE	NONE	NONE	FALSE	NONE VOLTS

If Inverter equals NONE, contact factory for further information

*
N
O
T
E
S
*

INVERTER TORQUE: NONE
INV. HP SPEED RANGE: NONE
ENCODER: NONE
NONE NONE
NONE NONE PPR
BRAKE: NONE NONE
NONE P/N NONE
NONE NONE
NONE FT-LB NONE V NONE Hz

DATE: 06/21/2017 03:57:28 AM
 FORM 3531 REV.3 02/07/99
 ** Subject to change without notice.

Data Sheet

Date: 29-06-2017
Customer: _____
Attention: _____
Submitted by: FAREEDA DUDEKULA



324TTDC6076

Submittal

Data @ **460 V**

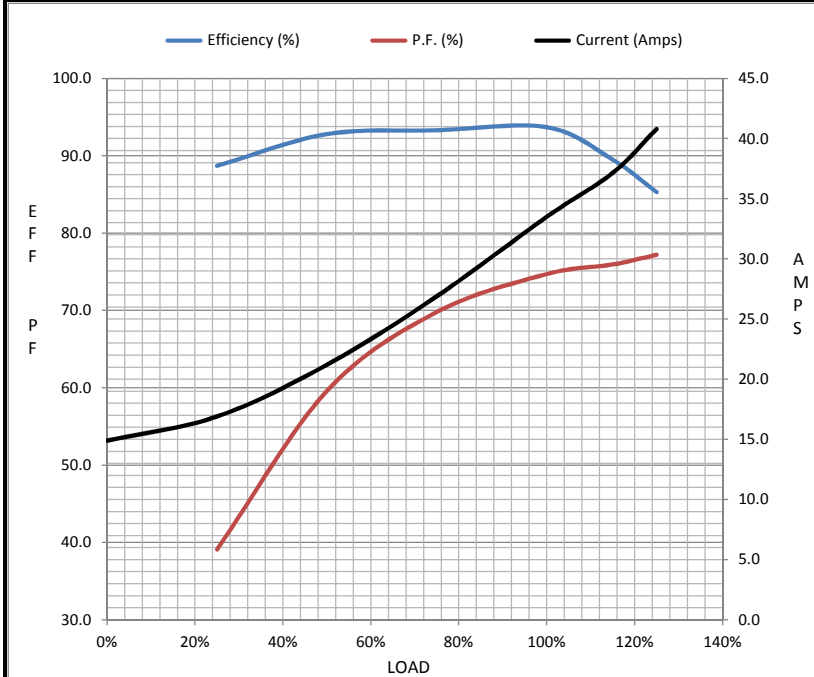
Motor Load Data

Load	0%	25%	50%	75%	100%	115%	125%	LR
Current (Amps)	14.9	16.9	21.2	26.9	33.5	37.2	40.8	182
Torque (ft-lb)	0.00	27.5	55.0	82.5	111	119	127	183
RPM	1200	1195	1194	1191	1190	1,188	1185	0
Efficiency (%)		88.7	92.8	93.3	93.7	89.5	85.3	
P.F. (%)	4.5	39.1	59.6	69.8	74.7	76.0	77.2	0.0

Motor Speed Data

	LR	Pull-Up	BD	Rated	Idle
Speed (RPM)	0	400	1115	1190	1200
Current (Amps)	182	167	129	33.5	14.9
Torque (ft-lb)	183	155	330	111	0.00

Information Block				
HP	25.0			
Sync. RPM	1200			
Frame	326			
Enclosure	DP			
Construction	TDC			
Voltage	3-230/460#190C V			
Frequency	60 Hz			
Design	B			
LR Code letter	G			
Service Factor	1.15			
Temp Rise @ FL	33 ° C			
Duty	CONT			
Ambient	40 ° C			
Elevation	1,000 feet			
Rotor/Shaft wk ²	0.00 Lb-Ft ²			
Ref Wdg	T16106015 DR			
Sound Pressure @ 1M	49 dBA			
VFD Rating	NONE			
Outline Dwg	169554-60ME			
Conn. Diag	004172-01ME			
Additional Specifications:				
0				
365THFS8036				
EQUIV CKT (OHMS / PHASE)				
R1	R2	X1	X2	Xm
0.0000	0.0000	0.0000	0.0000	0.0000



Speed - Torque Curve

