

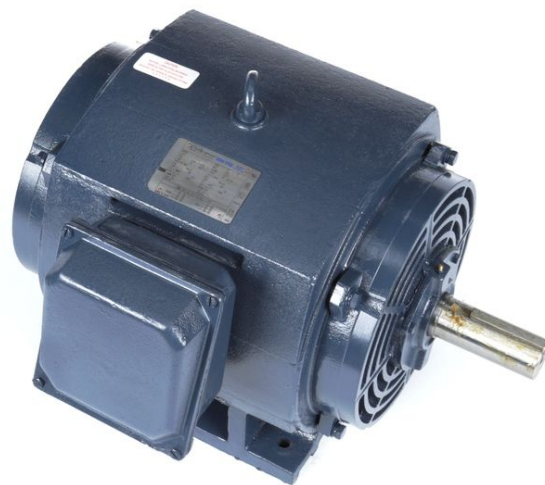
PRODUCT INFORMATION PACKET

marathon®
Motors

Model No: 324TTDC6029

Catalog No: E764A

40 HP General Purpose Motor, 3 phase, 1800 RPM, 575 V, 324T Frame, ODP
General Purpose Motors



Regal and Marathon are trademarks of Regal Rexnord Corporation or one of its affiliated companies.
©2021 Regal Rexnord Corporation, All Rights Reserved. MC017097E

RegalRexnord

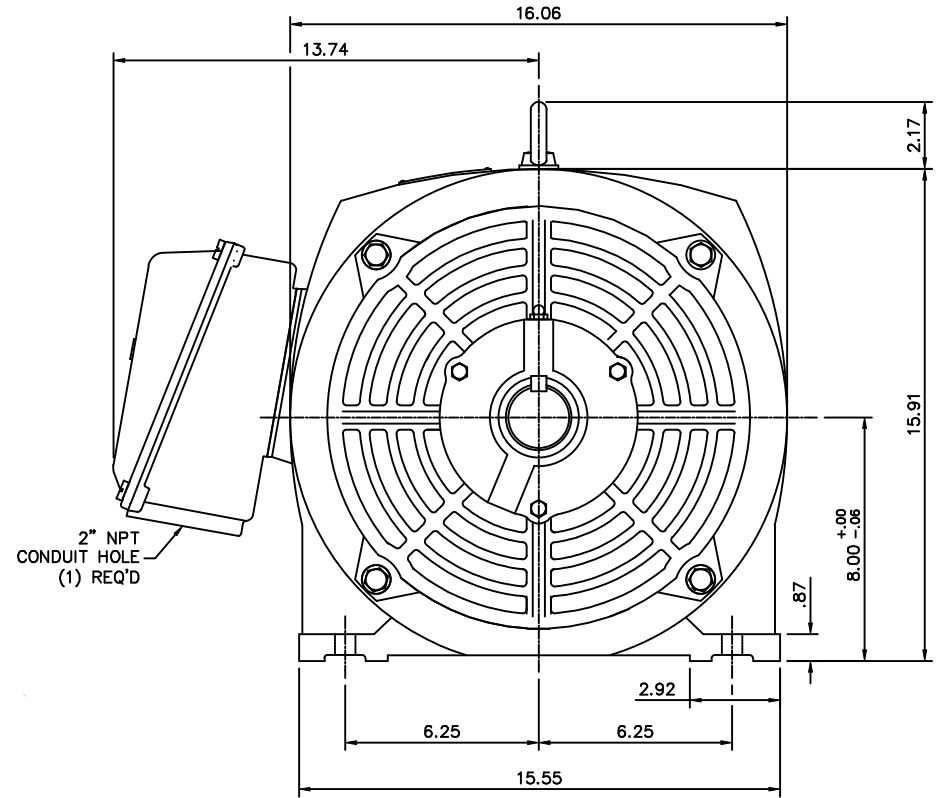
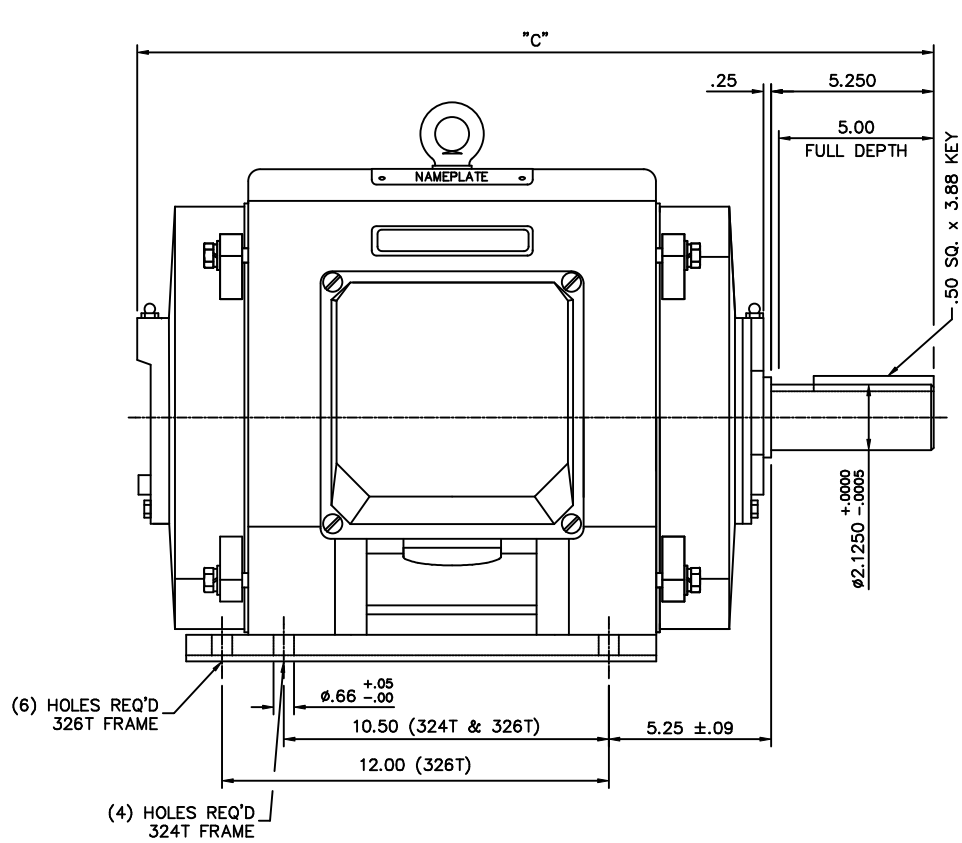
Nameplate Specifications

Output HP	40 Hp	Output KW	30.0 kW
Frequency	60 Hz	Voltage	575 V
Current	38.5 A	Speed	1780 rpm
Service Factor	1.15	Phase	3
Efficiency	94.1 %	Power Factor	83
Duty	Continuous	Insulation Class	F
Design Code	B	KVA Code	G
Frame	324T	Enclosure	Drip Proof
Thermal Protection	No	Ambient Temperature	40 °C
Drive End Bearing Size	6312	Opp Drive End Bearing Size	6312
UL	Recognized	CSA	Y
CE	Y	IP Code	12
Number of Speeds	1		


Technical Specifications

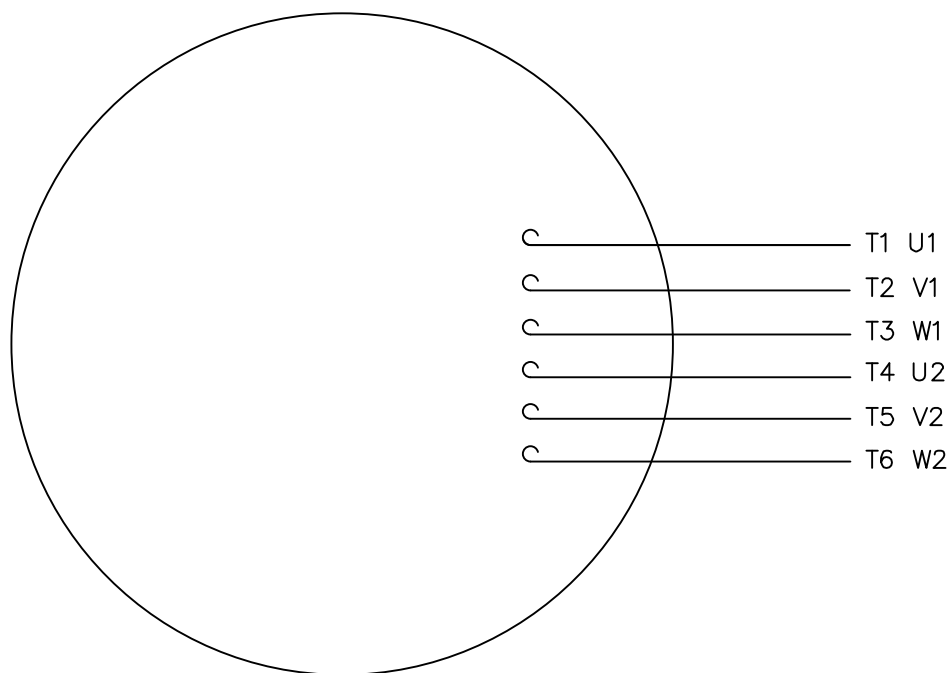
Electrical Type	Squirrel Cage Inverter Rated	Starting Method	Line Or Inverter
Poles	4	Rotation	Reversible
Resistance Main	.19 Ohms	Mounting	Rigid Base
Motor Orientation	Horizontal	Drive End Bearing	Ball
Opp Drive End Bearing	Ball	Frame Material	Cast Iron
Shaft Type	T	Overall Length	26.02 in
Shaft Diameter	2.125 in	Shaft Extension	5.25 in
Assembly/Box Mounting	F1/F2 Capable		
Connection Drawing	00519001ME	Outline Drawing	16955460ME

This is an uncontrolled document once printed or downloaded and is subject to change without notice. Date Created:10/12/2021

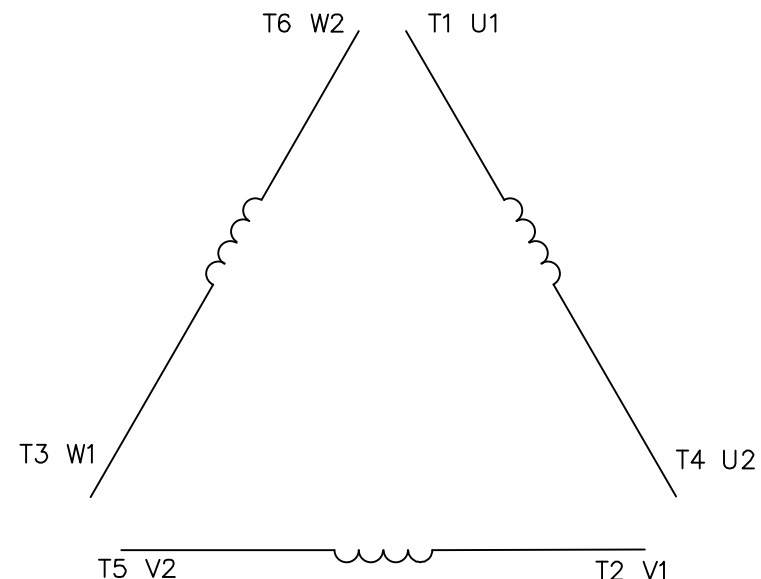


FRAME DESIGN	"C"
324T	26.02
326T	27.52


			TO TOLERANCES UNLESS SPECIFIED		DRAWN CTO 04-25-2002	
			DEC. INCHES		CHK ML 05-20-2002	
			.X ±.1	TITLE OUTLINE 320T FRAME DRIP PROOF - RIGID	APPD SB 05-21-2002	
			.XX ±.03		SCALE 1=1	
			.XXX ±.005		REF	
1	NEW DRAWING	CTO 05/21/02	.XXXX ±.0005	MAT'L CAST IRON	FMF	
NO.	REVISION	BY & DATE	CHK ANG ±1/2"	FINISH	PREV	
THIS DRAWING IN DESIGN AND DETAIL IS OUR PROPERTY AND MUST NOT BE USED EXCEPT IN CONNECTION WITH OUR WORK ALL RIGHTS OF DESIGN AND INVENTION ARE RESERVED THIS IS AN ELECTRONICALLY GENERATED DOCUMENT - DO NOT SCALE THIS PRINT				RFP	CAD FILE 16955460me	SIZE B
				DIST	DRAWING NO. 169554-60ME	REV. 1



LINE LEADS



	L1	L2	L3	JOIN
START (WYE)	T1 U1	T2 V1	T3 U2	(T4,T5,T6) (U2,V2,W2)
RUN (DELTA)	(T1,T6) (U1,W2)	(T2,T4) (V1,U2)	(T3,T5) (W1,V2)	

				TOLERANCES UNLESS SPECIFIED			DRAWN PG 05/07/82		
				DEC.	INCHES		CHK		
				.X	±.1		APPD TEM 05/07/82		
03	ADDED IEC DESIGNATIONS	MOL 04/27/12	.XX	±.01	TITLE EXTERNAL WIRING DIAGRAM STAR START – DELTA RUN			SCALE 1=1	
02	REMOVED OBSOLETE STATUS	KJH 06/28/99	.XXX	±.005				REF	
01	REDRAWN ON CAD	DBT 05/30/97	.XXXX	±.0005	MAT'L. Y–CONNECTED START – DELTA CONNECTED RUN			FMF	
NO.	REVISION	BY & DATE	CHK	ANG	±1/2"	FINISH SINGLE VOLTAGE		PREV	
THIS DRAWING IN DESIGN AND DETAIL IS OUR PROPERTY AND MUST NOT BE USED EXCEPT IN CONNECTION WITH OUR WORK ALL RIGHTS OF DESIGN AND INVENTION ARE RESERVED THIS IS AN ELECTRONICALLY GENERATED DOCUMENT – DO NOT SCALE THIS PRINT			RFP		CAD FILE 00519001ME		SIZE	DRAWING NO.	REV.
			DIST				A	005190–01ME	03

CERTIFICATION DATA SHEET

Model#: 324TTDC6029 AA

WINDING#: T16104018 NONE 4

CONN. DIAGRAM: 00519001ME

ASSEMBLY: F1/F2 CAPABLE

OUTLINE: 16955460-ME

TYPICAL MOTOR PERFORMANCE DATA

HP	KW	SYNC. RPM	F.L. RPM	FRAME	ENCLOSURE	KVA CODE	DESIGN
40	30	1800	1780	324T	DP	G	B

PH	Hz	VOLTS	FL AMPS	START TYPE	DUTY	INSL	S.F	AMB°C	ELEVATION
3	60	575	38.5	LINE OR INVERTER	CONTINUOUS	F2	1.15/1.0	40	3300

FULL LOAD EFF: 94.1	3/4 LOAD EFF: 94.5	1/2 LOAD EFF: 94	GTD. EFF	ELEC. TYPE	NO LOAD AMPS
FULL LOAD PF: 83	3/4 LOAD PF: 78.5	1/2 LOAD PF: 69.5	93.6	SQ CAGE INV RATED	14.5

F.L. TORQUE	LOCKED ROTOR AMPS	L.R. TORQUE	B.D. TORQUE	F.L. RISE°C
118 LB-FT	244	267 LB-FT 226	322 LB-FT 273	45

SOUND PRESSURE @ 3 FT.	SOUND POWER	ROTOR WK^2	MAX. WK^2	SAFE STALL TIME	STARTS /HOUR	APPROX. MOTOR WGT
75 dBA	85 dBA	- LB-FT^2	- LB-FT^2	20 SEC.	-	581 LBS.

*** SUPPLEMENTAL INFORMATION ***

DE BRACKET TYPE	ODE BRACKET TYPE	MOUNT TYPE	ORIENTATION	SEVERE DUTY	HAZARDOUS LOCATION	DRIP COVER	SCREENS	PAINT
STANDARD	STANDARD	RIGID	HORIZONTAL	FALSE	NONE	FALSE	NONE	BLUE (ENAMEL)

BEARINGS		GREASE	SHAFT TYPE	SPECIAL DE	SPECIAL ODE	SHAFT MATERIAL	FRAME MATERIAL
DE	OPE						
BALL	BALL						
6312	6312	POLYREX EM	T	NONE	NONE	1045 HOT ROLLED (C-204)	CAST IRON

THERMO-PROTECTORS				THERMISTORS	CONTROL	SPACE /n HEATERS
THERMOSTATS	PROTECTORS	WDG RTDs	BRG RTDs			
NONE	NOT	NONE	NONE	NONE	FALSE	NONE VOLTS

If Inverter equals NONE, contact factory for further information

INVERTER TORQUE: CONSTANT 10:1			
INV. HP SPEED RANGE: 1.5 X BASE SPEED			
ENCODER: NONE			
NONE NONE			
NONE NONE PPR			
BRAKE: NONE NONE			
NONE P/N NONE			
NONE NONE			
NONE FT-LB	NONE V	NONE Hz	

*
N
O
T
E
S
*

DATE: 06/21/2017 03:56:17 AM

FORM 3531 REV.3 02/07/99

** Subject to change without notice.

Data Sheet

Date: 19-06-2017

Customer:

Attention:

Submitted by: FAREEDA DUDEKULA



324TTDC6029

Submittal

Data @ 575 V

Motor Load Data

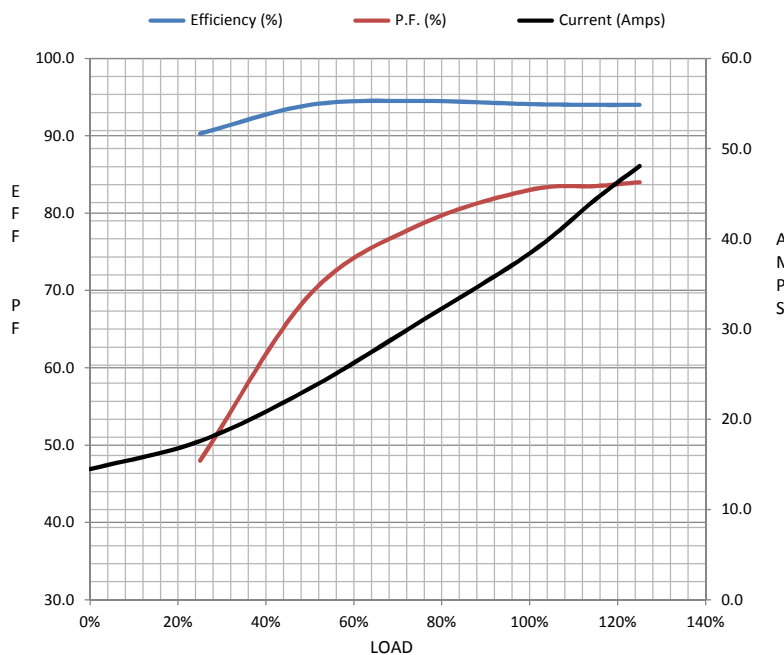
Load	0%	25%	50%	75%	100%	115%	125%	LR	
Current (Amps)	14.5	17.6	23.4	30.8	38.4	44.4	48.1	244	
Torque (ft-lb)	0.00	30.0	60.0	90.0	118	136	150	267	
RPM	1800	1795	1790	1785	1780	1,777	1775	0	
Efficiency (%)		90.3	94.0	94.5	94.1	94.0	94.0		
P.F. (%)	5.0	48.0	69.5	78.5	83.0	83.5	84.0	0.0	

Motor Speed Data

	LR	Pull-Up	BD	Rated	Idle
Speed (RPM)	0	800	1655	1780	1800
Current (Amps)	244	232	158	38.4	14.5
Torque (ft-lb)	267	227	322	118	0.00

Information Block

HP	40.0			
Sync. RPM	1800			
Frame	324			
Enclosure	DP			
Construction	TDC			
Voltage	575 V			
Frequency	60 Hz			
Design	A			
LR Code letter	H			
Service Factor	1.15			
Temp Rise @ FL	45 ° C			
Duty	CONT			
Ambient	40 ° C			
Elevation	1,000 feet			
Rotor/Shaft wk²	0.00 Lb-Ft²			
Ref Wdg	T16104018 NONE			
Sound Pressure @ 1M	75 dBA			
VFD Rating	CONSTANT 10:1			
Outline Dwg	16955460-ME			
Conn. Diag	5190.01			
Additional Specifications:				
0				
365THFS8036				
EQUIV CKT (OHMS / PHASE)				
R1	R2	X1	X2	Xm
0.0000	0.0000	0.0000	0.0000	0.0000



Speed - Torque Curve

