

# PRODUCT INFORMATION PACKET

**marathon®**  
Motors

Model No: 324TTDC4026

Catalog No: E726

Other Purpose Motor, 40 & 30 HP, 3 Ph, 60 & 50 Hz, 230/460 & 190/380 V, 1800 & 1500 RPM,  
324T Frame, DP

Regal and Marathon are trademarks of Regal Rexnord Corporation or one of its affiliated companies.

©2023 Regal Rexnord Corporation, All Rights Reserved. MC017097E

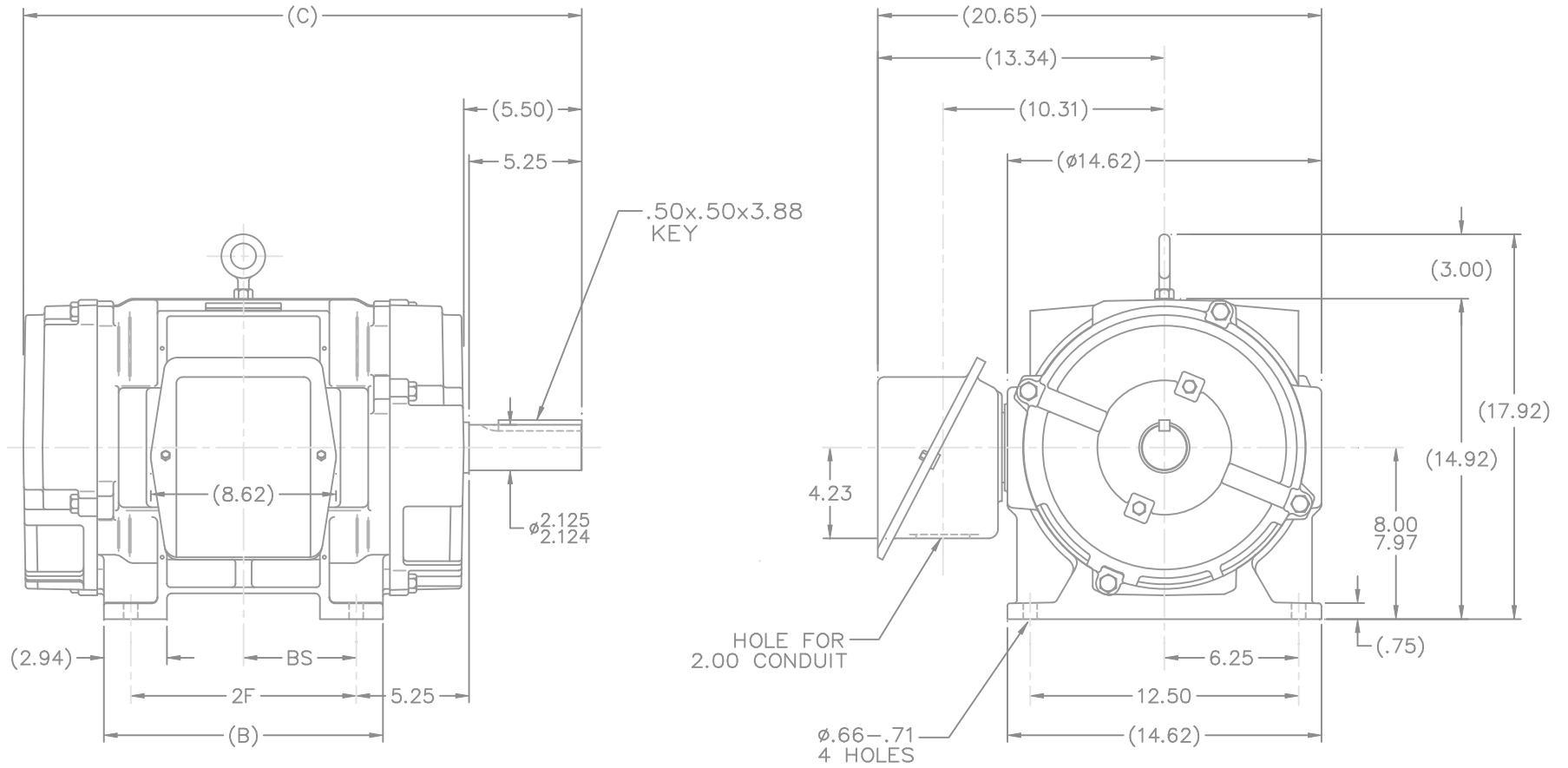
**RegalRexnord**

### Nameplate Specifications

|                        |                              |                            |                                |
|------------------------|------------------------------|----------------------------|--------------------------------|
| Phase                  | <b>3</b>                     | Output HP                  | <b>40 &amp; 30 Hp</b>          |
| Output KW              | <b>30.0 &amp; 22.4 kW</b>    | Voltage                    | <b>230/460 &amp; 190/380 V</b> |
| Speed                  | <b>1770 &amp; 1470 rpm</b>   | Service Factor             | <b>1.15 &amp; 1.15</b>         |
| Frame                  | <b>324T</b>                  | Enclosure                  | <b>Drip Proof</b>              |
| Thermal Protection     | <b>No Protection</b>         | Efficiency                 | <b>93 &amp; 92.4 %</b>         |
| Ambient Temperature    | <b>40 °C</b>                 | Frequency                  | <b>60 &amp; 50 Hz</b>          |
| Current                | <b>93/46.5 &amp; 86/43 A</b> | Power Factor               | <b>86</b>                      |
| Duty                   | <b>Continuous</b>            | Insulation Class           | <b>B</b>                       |
| Design Code            | <b>B</b>                     | KVA Code                   | <b>G</b>                       |
| Drive End Bearing Size | <b>6312</b>                  | Opp Drive End Bearing Size | <b>6311</b>                    |
| UL                     | <b>Recognized</b>            | CSA                        | <b>Y</b>                       |
| CE                     | <b>N</b>                     | IP Code                    | <b>12</b>                      |
| Number of Speeds       | <b>1</b>                     |                            |                                |

### Technical Specifications

|                       |                                    |                       |                        |
|-----------------------|------------------------------------|-----------------------|------------------------|
| Electrical Type       | <b>Squirrel Cage Induction Run</b> | Starting Method       | <b>Across The Line</b> |
| Poles                 | <b>4</b>                           | Rotation              | <b>Reversible</b>      |
| Resistance Main       | <b>.19 Ohms</b>                    | Mounting              | <b>Rigid Base</b>      |
| Motor Orientation     | <b>Horizontal</b>                  | Drive End Bearing     | <b>Ball</b>            |
| Opp Drive End Bearing | <b>Ball</b>                        | Frame Material        | <b>Cast Iron</b>       |
| Shaft Type            | <b>T</b>                           | Overall Length        | <b>26.00 in</b>        |
| Frame Length          | <b>13.62 in</b>                    | Shaft Diameter        | <b>2.125 in</b>        |
| Shaft Extension       | <b>5.25 in</b>                     | Assembly/Box Mounting | <b>F1/F2 CAPABLE</b>   |
| Connection Drawing    | <b>A-EE7308</b>                    | Outline Drawing       | <b>B-SS200150-1362</b> |



- NOTES:  
 1. BOX CAN BE ROTATED IN 90° STEPS  
 2. BOX CAN BE MOUNTED ON OPPOSITE SIDE BY REMOVING BRACKETS AND TURNING FRAME 180°  
 3. NAMEPLATE TO BE READ FROM CONDUIT BOX SIDE OF MOTOR

(SS200078)

| DASH | FRAME | B     | C     | 2F    | BS   |
|------|-------|-------|-------|-------|------|
| 1362 | 324T  | 13.00 | 26.00 | 10.50 | 5.25 |
| 1512 | 326T  | 14.50 | 27.50 | 12.00 | 6.00 |

|  |                                 |                | TOLERANCES UNLESS SPECIFIED |              | MARATHON ELECTRIC  | DRAWN JL 09-23-1988 |                      |             |        |
|--|---------------------------------|----------------|-----------------------------|--------------|--|---------------------|----------------------|-------------|--------|
|  |                                 |                | DEC.                        | INCHES       |  | CHK CK 09-27-1988   | APPD GK 09-27-1988   |             |        |
| 3  | REDRAWN IN AUTOCAD              | RWR 09-29-2004 | ML                          | .XX ±.03     | TITLE OUTLINE -DR.PR. -CAST IRON<br>320T FR. -BB -TS -D.E.V. -CAST C'BOX | SCALE               | 1=5                  |             |        |
| 2  | REMOVED TOP AIR OPENING CN10462 | JL 11-19-1991  | ML                          | .XXX ±.005   |  | REF                 |                      |             |        |
| 1  | NEW DRAWING CN10009             | JL 09-27-1988  | ML                          | .XXXX ±.0005 |  | FMF                 |                      |             |        |
| NO.  | REVISION                        | BY & DATE      | CHK                         | ANG          | FINISH   | PREV                |                      |             |        |
| THIS DRAWING IN DESIGN AND DETAIL IS OUR PROPERTY AND MUST NOT BE USED EXCEPT IN CONNECTION WITH OUR WORK ALL RIGHTS OF DESIGN AND INVENTION ARE RESERVED THIS IS AN ELECTRONICALLY GENERATED DOCUMENT - DO NOT SCALE THIS PRINT |                                 |                | RFP                         | 09-27-1988   | CAD FILE ss200150  | SIZE B              | DRAWING NO. SS200150 | PAGE 1 OF 1 | REV. 3 |
|  |                                 |                | DIST                        | LB           |  |                     |                      |             |        |

EE7308

THREE PHASE  
DUAL VOLTAGE MOTOR



VIEW OF TERMINAL END

REF.  
WINDING DIAGRAM

T8Y, T2Y, T2BL, T4BX, T2EC, T2G  
T6BZ, T2B, T6BL, T4AV, T6B, T4B

OPTIONAL CORD  
CONNECTION

L1 — WHITE  
L2 — RED  
L3 — BLACK

| NO.  | REVISION                                       | BY & DATE      | CHK | ANG   | TOLERANCES<br>UNLESS SPECIFIED |        | FINISH  | DRAWN RM 11/20/1990 |        |                    |           |        |
|--|--|----------------|-----|-------|--------------------------------|--------|---|---------------------|--------|--------------------|-----------|--------|
|  |  |                |     |       | DEC.                           | INCHES |   |                     |        |                    |           |        |
| 5  | CHG TO REGAL LOGO                              | SL 09/10/2015  | AB  |       |                                |        |   | CHK ML 11/21/1990   |        |                    |           |        |
| 4  | REVISED IEC NOTATIONS                          | MSG 11/15/2011 | CMN | .X    | ±.1                            |        |   | APPD SAS 04/24/2003 |        |                    |           |        |
| 3  | ADDED IEC NOTATIONS... (U1), (V1) ETC. MU95194 | MSG 5/10/2010  | MJS | .XX   | ±.02                           |        |   | SCALE 1=1           |        |                    |           |        |
| 2  | ADDED THE OPTIONAL CORD CONNECTION MU46318     | RDH 04/24/2003 | DRS | .XXX  | ±.005                          |        | TITLE CONNECTION DIAGRAM<br>3Ø - DUAL VOLTAGE MOTOR | REF                 |        |                    |           |        |
| 1  | REDRAWN  | RM 11/20/1990  |     | .XXXX | ±.0005                         |        | MAT'L.  | FMF                 |        |                    |           |        |
|  |  |                |     |       | ±7'30"                         |        |   | PREV                |        |                    |           |        |
| THIS DRAWING IN DESIGN AND DETAIL IS OUR PROPERTY AND MUST NOT BE USED EXCEPT IN CONNECTION WITH OUR WORK ALL RIGHTS OF DESIGN AND INVENTION ARE RESERVED THIS IS AN ELECTRONICALLY GENERATED DOCUMENT - DO NOT SCALE THIS PRINT |  |                |     |       |                                |        | RFP   | CAD FILE ee7308     | SIZE A | DRAWING NO. EE7308 | PAGE OF 5 | REV. 5 |
|  |  |                |     |       |                                |        | DIST WP   |                     |        |                    |           |        |



Regal Beloit America, Inc.