

PRODUCT INFORMATION PACKET



Model No: 324TSTFPA16504
Catalog No: 324TSTFPA16504
25,3600,TEFC,324TSCV,3/60/460

Regal and Marathon are trademarks of Regal Rexnord Corporation or one of its affiliated companies.
©2023 Regal Rexnord Corporation, All Rights Reserved. MC017097E



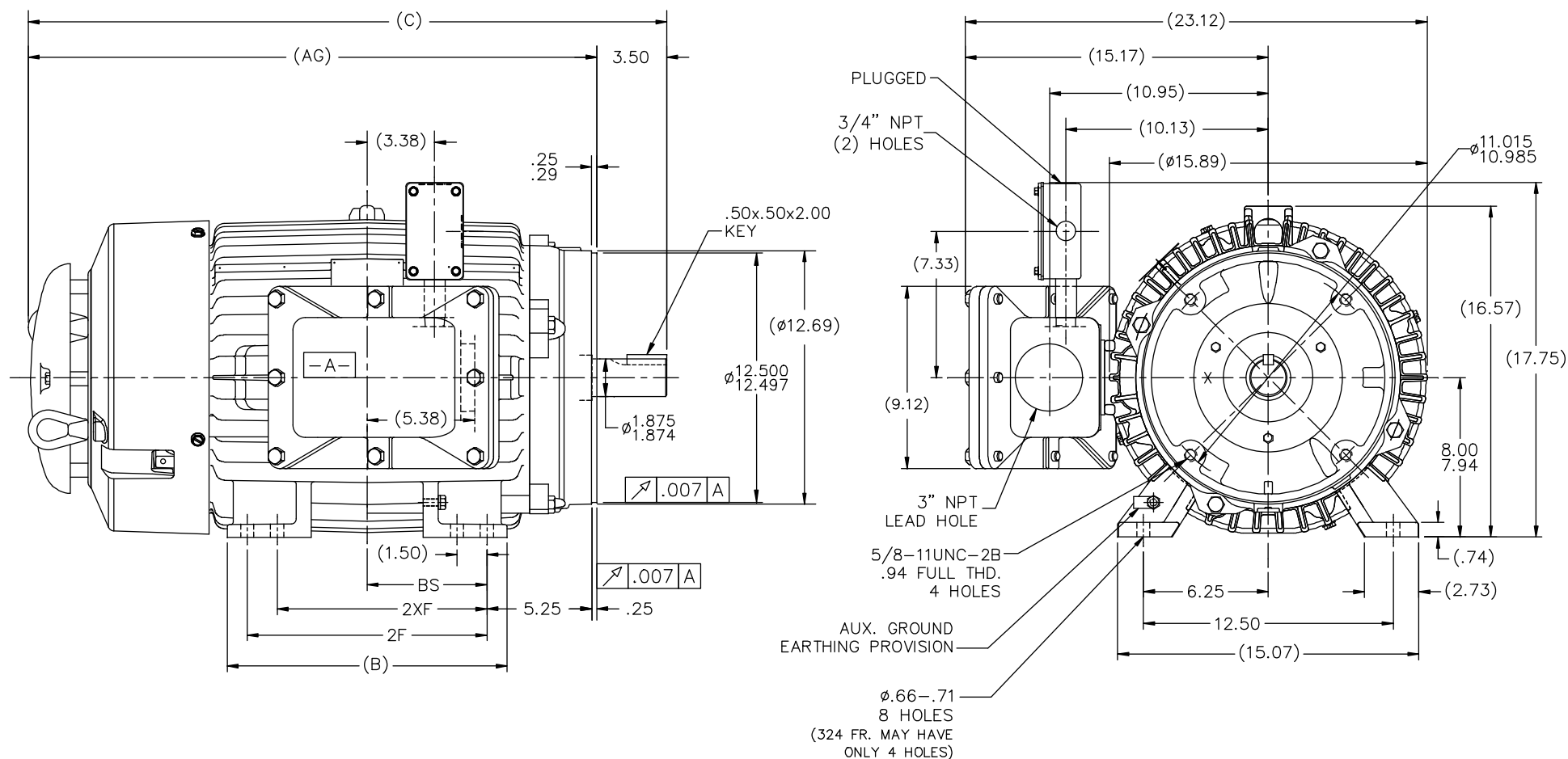
Nameplate Specifications

Phase	3	Output HP	25 Hp
Output KW	18.7 kW	Voltage	460 V
Speed	3555 rpm	Service Factor	1
Frame	324TSCV	Enclosure	Totally Enclosed Fan Cooled
Thermal Protection	No Protection	Efficiency	93.6 %
Ambient Temperature	-40 °C	Frequency	60 Hz
Current	28.1 A	Power Factor	89
Duty	Continuous	Insulation Class	F
Design Code	B	KVA Code	G
Drive End Bearing Size	6312	Opp Drive End Bearing Size	6311
UL	Recognized	CSA	Y
CE	Y	IP Code	56
Number of Speeds	1	Hazardous Location	ATEX ZONE 2 / ZONE 22

Technical Specifications

Electrical Type	Squirrel Cage Induction Run	Starting Method	Across The Line
Poles	2	Rotation	Reversible
Resistance Main	.356 Ohms	Mounting	Rigid Base
Motor Orientation	Shaft Down	Drive End Bearing	Ball
Opp Drive End Bearing	Ball	Frame Material	Cast Iron
Shaft Type	TS	Assembly/Box Mounting	W6
Outline Drawing	SS312011-1625	Connection Drawing	A-EE7300AP

This is an uncontrolled document once printed or downloaded and is subject to change without notice. Date Created:08/24/2023



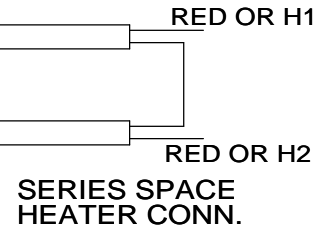
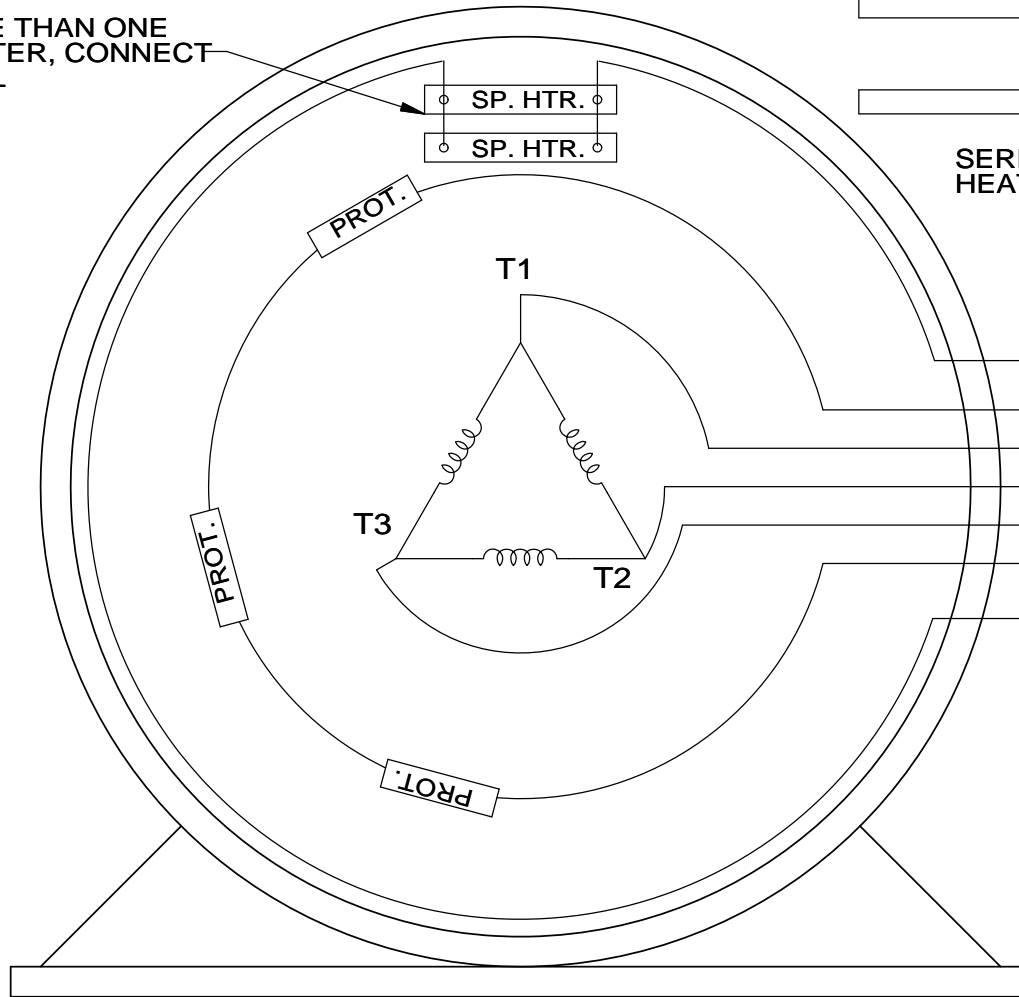
NOTES:

1. BOX CAN ONLY BE ROTATED CLOCKWISE UP TO 270° FROM ITS ORIGINAL POSITION.
2. NAMEPLATE TO BE READ FROM CONDUIT BOX SIDE OF MOTOR.

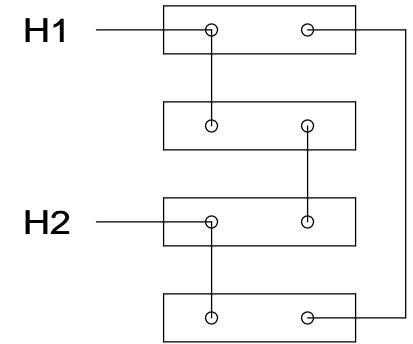
DASH	FRAME	B	AG	C	2F	2XF	BS
1475	324/326TS	14.00	26.97	30.47	10.50		5.25
1625	324/326TS	14.00	28.47	31.97	12.00	10.50	6.00

				TOLERANCES UNLESS SPECIFIED		MARATHON ELECTRIC	DRAWN JJB 08-23-2007			
				DEC.	INCHES		CHK	ML	08-23-2007	
				.X	±.1		APPD	SW	09-06-2007	
				.XX	±.03		TITLE OUTLINE - TEFC - TTFA - AUX. C-BOX			
				.XXX	±.005		320TSC FR. - BB - STD - 12.50 LAM			
1	REV. C'BOX HOLE SIZE FROM 2" NPT PER CN41860	RWR 05-13-2008	ML	.XXXX	±.0005	MAT'L	REF	FMF	MUB1088	
NO.	REVISION	BY & DATE	CHK	ANG	FINISH		PREV			
THIS DRAWING IN DESIGN AND DETAIL IS OUR PROPERTY AND MUST NOT BE USED EXCEPT IN CONNECTION WITH OUR WORK ALL RIGHTS OF DESIGN AND INVENTION ARE RESERVED THIS IS AN ELECTRONICALLY GENERATED DOCUMENT - DO NOT SCALE THIS PRINT						RFP	CAD FILE SS312011		SIZE	DRAWING NO. PAGE OF REV.
						DIST LB			B	SS312011 1

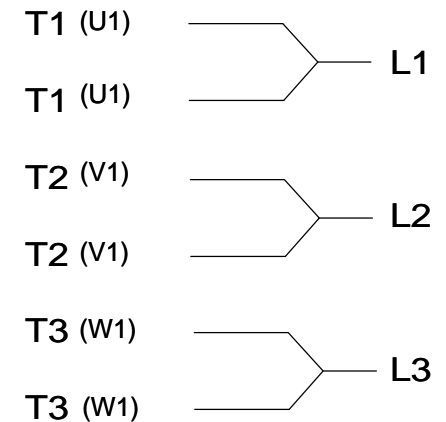
WHEN MORE THAN ONE
SPACE HEATER, CONNECT
IN PARALLEL



SPACE HEATERS CONNECTED IN SERIES PARALLEL



IF MOTOR OR GEN. HAS 6 LEADS



NOTE:
THERMO-PROTECTORS
CONNECTED IN SERIES

VIEW OF TERMINAL END

DRAWING REVISION J	REVISION BY JHA	DATE 03-06-2017
ECO ECO-0119314	APPROVED BY DJK	DATE 03-06-2017

ECO DESCRIPTION

UPDATED TO SOLIDWORKS

COPYRIGHT REGAL BELOIT AMERICA, INC. ALL RIGHTS RESERVED.
PROPRIETARY AND CONFIDENTIAL INFORMATION - THIS DOCUMENT IS THE PROPERTY OF
REGAL BELOIT AMERICA, INC. ("OWNER") AND CONTAINS OWNER'S PROPRIETARY
INFORMATION. ANY PERSON, CORPORATION OR OTHER FIRM RECEIVING IT IS DEEMED,
BY RECEIVING IT, TO AGREE THAT IT, AND/OR ANY PART OF IT, SHALL NOT BE DISCLOSED
TO ANY PERSON, CORPORATION OR OTHER ENTITY, DUPLICATED, AND/OR USED, EXCEPT
AS EXPRESSLY APPROVED IN WRITING IN ADVANCE BY OWNER. THIS DOCUMENT SHALL
BE RETURNED TO OWNER UPON REQUEST. IT MAY BE SUBJECT TO CERTAIN
RESTRICTIONS UNDER APPLICABLE EXPORT CONTROL LAWS AND REGULATIONS.

TOLERANCES UNLESS OTHERWISE SPECIFIED:

DEC.	INCH	mm	ANGLE
.X	±0.1	[±2.5]	±7' 30"
.XX	±0.02	[±0.51]	
.XXX	±0.005	[±0.127]	
.XXXX	±0.0005	[±0.0127]	
REMOVE BURRS & BREAK SHARP EDGES: .003/.015 [.076/.381] X 45° CORNER FILLETS: R.02 [.51] MACHINED SURFACES: 200 INCH/mm 5.1			
mm SHOWN IN [BRACKETS]			

DRAWN BY
KL

DATE
10-08-1993

APPROVED BY
TB

DATE
10-12-1993

REFERENCE

THIRD ANGLE
PROJECTION

Regal Beloit America, Inc.

DESCRIPTION

CONN DIAGRAM-EXTERNAL

3 PHASE - SINGLE VOLTAGE - WITH SPACE HEATERS

MATERIAL

PROCESS/FINISH

SIZE
A

DRAWING NUMBER

EE7300AP

SHEET
1 OF 1