

# PRODUCT INFORMATION PACKET

**marathon®**  
Motors

Model No: 324TSTFCA6001

Catalog No: GT1033

Globetrotter® General Purpose Motor, 40 & 30 HP, 3 Ph, 60 & 50 Hz, 230/460 & 190/380 V,  
3600 & 3000 RPM, 324TS Frame, TEFC



Regal and Marathon are trademarks of Regal Rexnord Corporation or one of its affiliated companies.

©2023 Regal Rexnord Corporation, All Rights Reserved. MC017097E

**RegalRexnord**

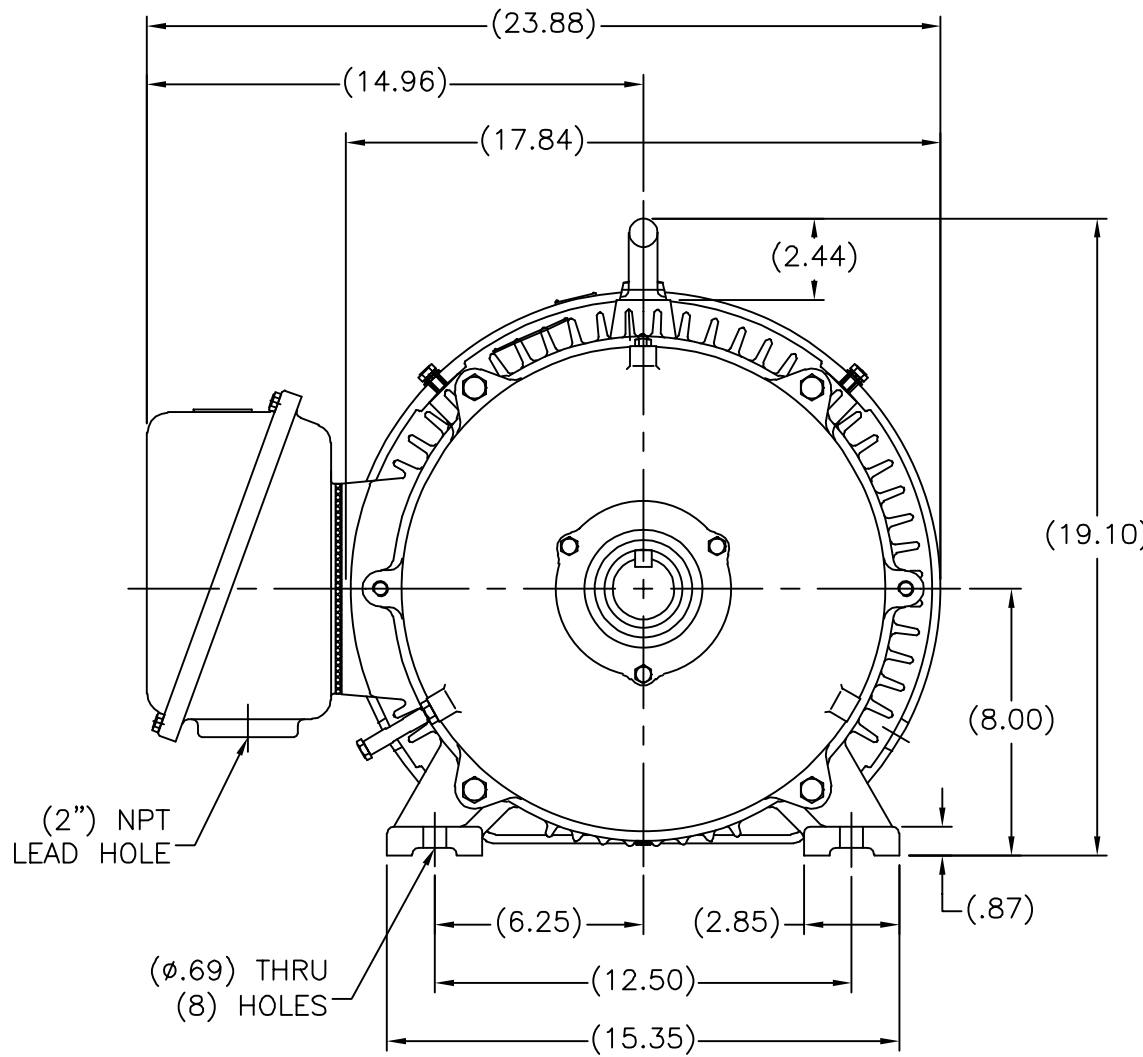
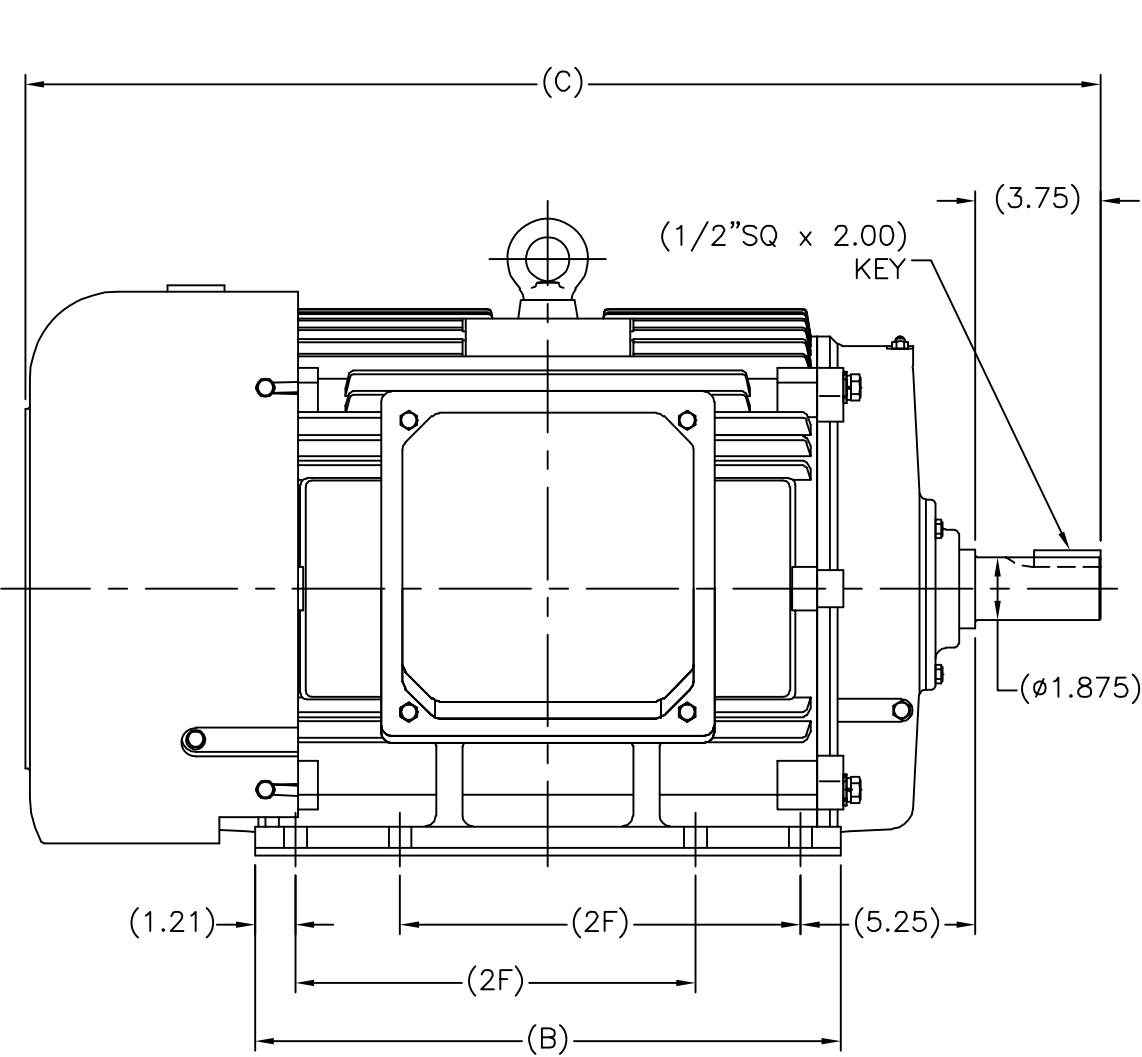
### Nameplate Specifications

|                        |                   |                            |                             |
|------------------------|-------------------|----------------------------|-----------------------------|
| Phase                  | 3                 | Output HP                  | 40 & 30 Hp                  |
| Output KW              | 30.0 & 22.4 kW    | Voltage                    | 230/460 & 190/380 V         |
| Speed                  | 3570 & 2970 rpm   | Service Factor             | 1.15 & 1.15                 |
| Frame                  | 324TS             | Enclosure                  | Totally Enclosed Fan Cooled |
| Thermal Protection     | No Protection     | Efficiency                 | 92.4 & 91.7 %               |
| Ambient Temperature    | 40 °C             | Frequency                  | 60 & 50 Hz                  |
| Current                | 88/44 & 81/40.5 A | Power Factor               | 90                          |
| Duty                   | Continuous        | Insulation Class           | F                           |
| Design Code            | B                 | KVA Code                   | G                           |
| Drive End Bearing Size | 6212              | Opp Drive End Bearing Size | 6212                        |
| UL                     | Recognized        | CSA                        | Y                           |
| CE                     | Y                 | IP Code                    | 43                          |
| Number of Speeds       | 1                 |                            |                             |

### Technical Specifications

|                       |                              |                    |                                 |
|-----------------------|------------------------------|--------------------|---------------------------------|
| Electrical Type       | Squirrel Cage Inverter Rated | Starting Method    | Wye Start Delta Run Or Inverter |
| Poles                 | 2                            | Rotation           | Reversible                      |
| Resistance Main       | .164 Ohms                    | Mounting           | Rigid Base                      |
| Motor Orientation     | Horizontal                   | Drive End Bearing  | Ball                            |
| Opp Drive End Bearing | Ball                         | Frame Material     | Cast Iron                       |
| Shaft Type            | TS                           | Overall Length     | 31.26 in                        |
| Shaft Diameter        | 1.875 in                     | Shaft Extension    | 3.75 in                         |
| Assembly/Box Mounting | F1/F2 Capable                |                    |                                 |
| Outline Drawing       | SS620248-324TS               | Connection Drawing | A-EE7308AA                      |

SS620248

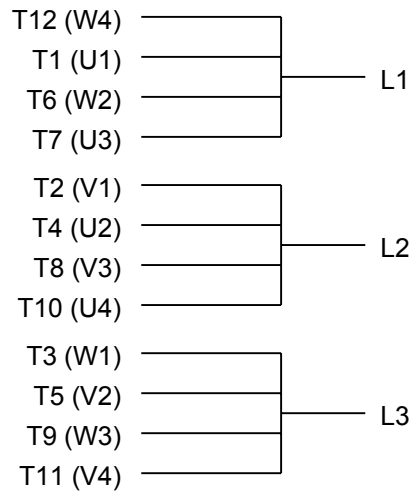


(MAY NOT BE DRAWN TO SCALE)

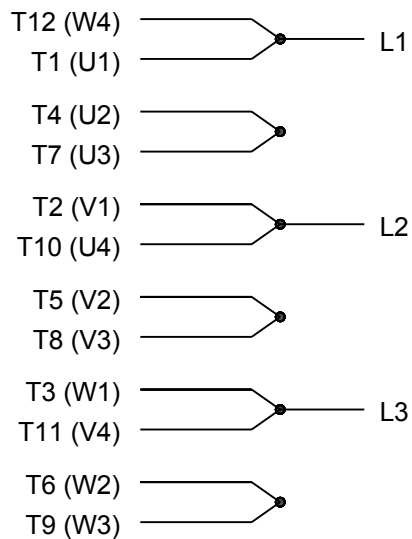
(DIMENSIONS IN TABLE ARE CONSIDERED REFERENCE)

|       |       |       |       |
|-------|-------|-------|-------|
| 324TS | 31.26 | 16.37 | 10.50 |
| 326TS | 32.44 | 17.56 | 12.00 |
| FRAME | C     | B     | 2F    |

|  |                                      | TOLERANCES<br>UNLESS SPECIFIED |        | REGAL REGAL-BELOIT CORPORATION |            | DRAWN MSG 01/12/2010  |                         |
|--|--------------------------------------|--------------------------------|--------|--------------------------------|------------|-----------------------|-------------------------|
|  |                                      | DEC.                           | INCHES |                                |            | CHK                   | MJS 01/13/2010          |
|  |                                      | .X                             | ±.1    |                                |            | APPD                  | SB 01/13/2010           |
|  |                                      | .XX                            | ±.03   | TITLE OUTLINE                  |            | SCALE N/A             |                         |
|  |                                      | .XXX                           | ±.005  | 320TS FR. - TEFC               |            | REF                   |                         |
| 1  | REVISED TITLE BLOCK PER. ECO-0050447 | RFH 05/01/2014                 | SB     | .XXXX                          | ±.0005     | MAT'L.                | FMF HUADA               |
| NO.  | REVISION                             | BY & DATE                      | CHK    | ANG                            | ±1/2'      | FINISH                | PREV                    |
| THIS DRAWING IN DESIGN AND DETAIL IS OUR PROPERTY AND MUST NOT BE USED EXCEPT IN CONNECTION WITH OUR WORK ALL RIGHTS OF DESIGN AND INVENTION ARE RESERVED THIS IS AN ELECTRONICALLY GENERATED DOCUMENT - DO NOT SCALE THIS PRINT |                                      |                                |        | RFP                            | 10/14/2010 | CAD FILE SS620248.dwg | SIZE A                  |
|  |                                      |                                |        | DIST                           |            |                       | DRAWING NO. PAGE 1 OF 1 |
|  |                                      |                                |        |                                |            | SS620248              | REV. 1                  |



## LOW VOLTAGE



## HIGH VOLTAGE



## VIEW OF TERMINAL END

|  |                       |                    |
|--|-----------------------|--------------------|
| DRAWING REVISION<br>K  | REVISION BY<br>AJW    | DATE<br>07-17-2015 |
| ECO<br>ECO-0081632   | APPROVED BY<br>T. VUE | DATE<br>07-17-2015 |
| ECO DESCRIPTION<br>REV'D IEC MARKINGS PER IEC 60034-8  |                       |                    |
| COPYRIGHT REGAL BELOIT AMERICA, INC. ALL RIGHTS RESERVED.<br>PROPRIETARY AND CONFIDENTIAL INFORMATION - THIS DOCUMENT IS THE PROPERTY OF<br>REGAL BELOIT AMERICA, INC. ("OWNER") AND CONTAINS OWNER'S PROPRIETARY<br>INFORMATION. ANY PERSON, CORPORATION OR OTHER FIRM RECEIVING IT IS DEEMED,<br>BY RECEIVING IT, TO AGREE THAT IT, AND/OR ANY PART OF IT, SHALL NOT BE DISCLOSED<br>TO ANY PERSON, CORPORATION OR OTHER ENTITY, DUPLICATED, AND/OR USED, EXCEPT<br>AS EXPRESSLY APPROVED IN WRITING IN ADVANCE BY OWNER. THIS DOCUMENT SHALL<br>BE RETURNED TO OWNER UPON REQUEST. IT MAY BE SUBJECT TO CERTAIN<br>RESTRICTIONS UNDER APPLICABLE EXPORT CONTROL LAWS AND REGULATIONS. |                       |                    |

|                   |                           |
|-------------------|---------------------------|
| DRAWN BY<br>LZ    | DATE<br>01-12-1994        |
| APPROVED BY<br>GK | DATE<br>01-14-1994        |
| REFERENCE         | THIRD ANGLE<br>PROJECTION |

|  |                            |                 |
|--|----------------------------|-----------------|
|  Regal Beloit America, Inc. |                            |                 |
| DESCRIPTION<br>CONN DIAGRAM-EXTERNAL<br>3Ø-2/1 DELTA-12 LEADS  |                            |                 |
| MATERIAL   | PROCESS/FINISH             |                 |
| SIZE<br>A  | DRAWING NUMBER<br>EE7308AA | SHEET<br>1 OF 1 |