

# PRODUCT INFORMATION PACKET

Model No: 324TSTFC6006

Catalog No: E011

40 HP General Purpose Motor, 3 phase, 3600 RPM, 575 V, 324TS Frame, TEFC  
General Purpose Motors



Regal and Marathon are trademarks of Regal Rexnord Corporation or one of its affiliated companies.  
©2021 Regal Rexnord Corporation, All Rights Reserved. MC017097E



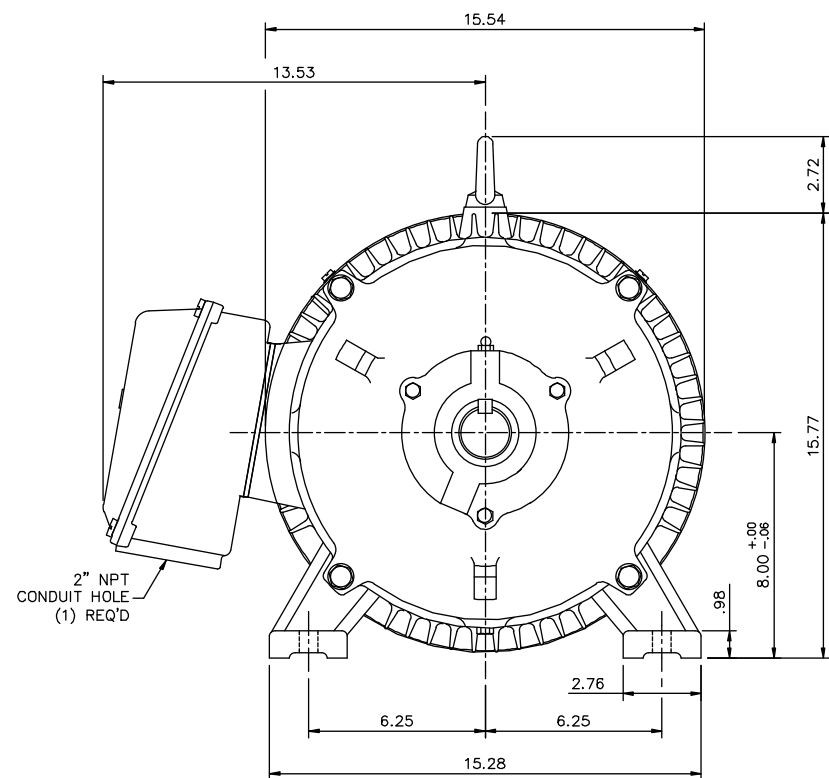
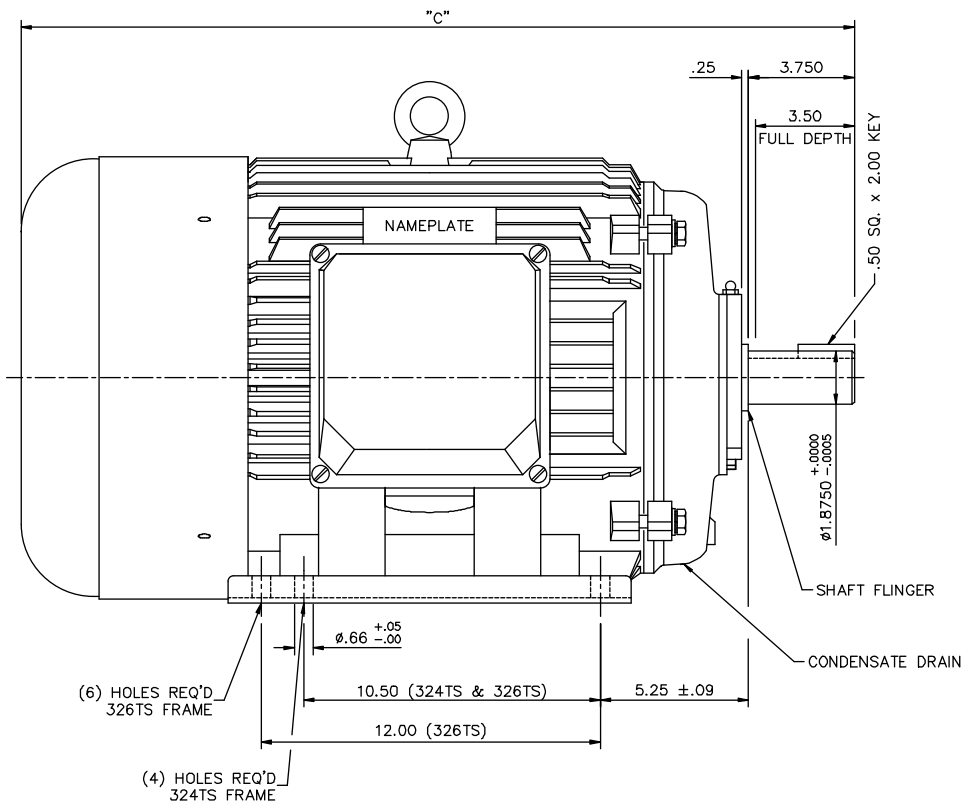
### Nameplate Specifications

Output HP	<b>40 Hp</b>	Output KW	<b>30.0 kW</b>
Frequency	<b>60 Hz</b>	Voltage	<b>575 V</b>
Current	<b>99.0-90.0/45.0 A</b>	Speed	<b>3555 rpm</b>
Service Factor	<b>1.15</b>	Phase	<b>3</b>
Efficiency	<b>93.6 %</b>	Power Factor	<b>88.9</b>
Duty	<b>Continuous</b>	Insulation Class	<b>F</b>
Design Code	<b>B</b>	KVA Code	<b>G</b>
Frame	<b>324TS</b>	Enclosure	<b>Totally Enclosed Fan Cooled</b>
Thermal Protection	<b>No</b>	Ambient Temperature	<b>40 °C</b>
Drive End Bearing Size	<b>6312</b>	Opp Drive End Bearing Size	<b>6312</b>
UL	<b>Recognized</b>	CSA	<b>Y</b>
CE	<b>Y</b>	IP Code	<b>43</b>
Number of Speeds	<b>1</b>		

### Technical Specifications

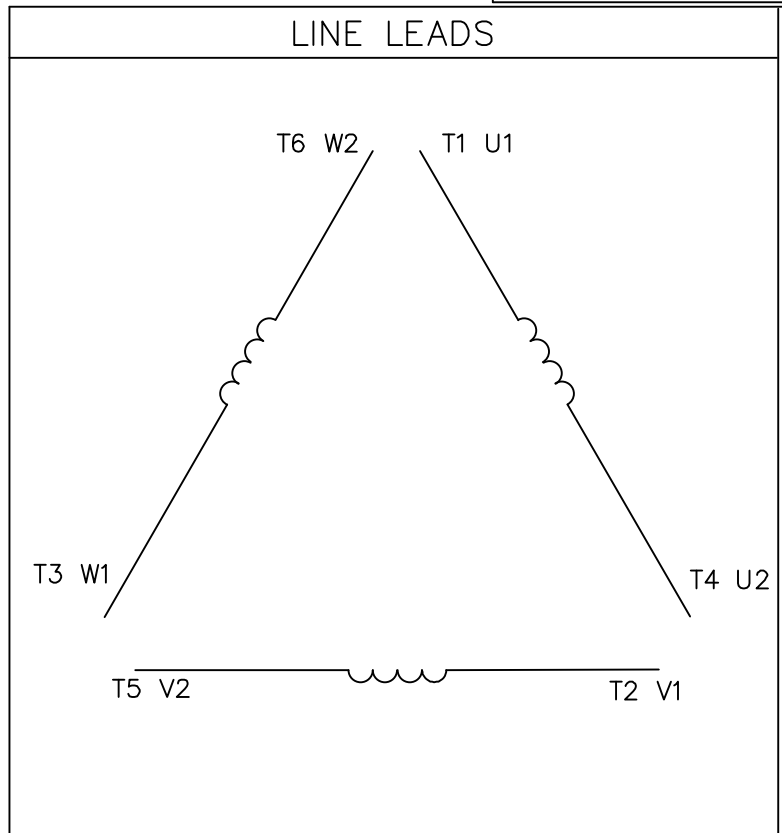
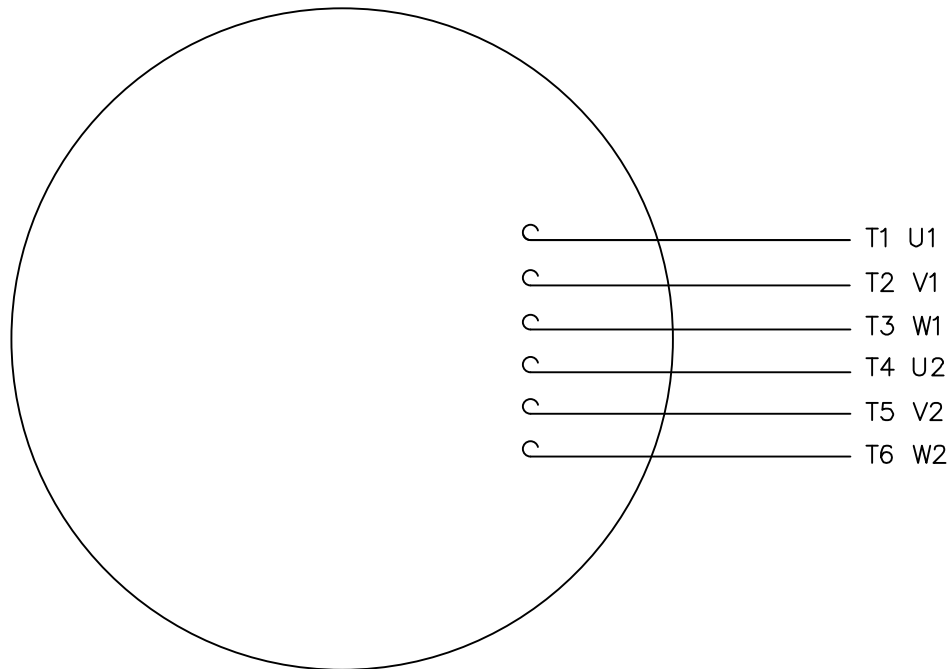
Electrical Type	<b>Squirrel Cage Inverter Rated</b>	Starting Method	<b>Line Or Inverter</b>
Poles	<b>2</b>	Rotation	<b>Reversible</b>
Resistance Main	<b>.155 Ohms</b>	Mounting	<b>Rigid Base</b>
Motor Orientation	<b>Horizontal</b>	Drive End Bearing	<b>Ball</b>
Opp Drive End Bearing	<b>Ball</b>	Frame Material	<b>Cast Iron</b>
Shaft Type	<b>TS</b>	Overall Length	<b>28.03 in</b>
Shaft Diameter	<b>1.875 in</b>	Shaft Extension	<b>3.75 in</b>
Assembly/Box Mounting	<b>F1/F2 CAPABLE</b>		
Outline Drawing	<b>16954260ME-324TS</b>	Connection Drawing	<b>005190.01ME</b>

This is an uncontrolled document once printed or downloaded and is subject to change without notice. Date Created:10/12/2021



FRAME DESIGN	"C"
324TS	28.03
326TS	29.53

		TOLERANCES UNLESS SPECIFIED			DRAWN JJK 03/29/99			
		DEC.	INCHES		CHK			
		.X	±.1	APPD PC 03/31/99	SCALE 1=4			
		.XX	±.03	TITLE OUTLINE - 320TS FRAME	REF 169504			
		.XXX	±.005	TEFC - RIGID	PREV			
01	ADDED HOLES FOR 326TS BASE	JJK	07/15/99	MAT'L CAST IRON	FMF			
NO.	REVISION	BY & DATE	CHK	ANG ±1/2'	FINISH			
THIS DRAWING IN DESIGN AND DETAIL IS OUR PROPERTY AND MUST NOT BE USED EXCEPT IN CONNECTION WITH OUR WORK ALL RIGHTS OF DESIGN AND INVENTION ARE RESERVED THIS IS AN ELECTRONICALLY GENERATED DOCUMENT - DO NOT SCALE THIS PRINT				RFP	CAD FILE 16954260ME	SIZE B	DRAWING NO. 169542-60ME	REV.
				DIST NLV				



	L1	L2	L3	JOIN
START (WYE)	T1 U1	T2 V1	T3 U2	(T4, T5, T6) (U2, V2, W2)
RUN (DELTA)	(T1, T6) (U1, W2)	(T2, T4) (V1, U2)	(T3, T5) (W1, V2)	

		TOLERANCES UNLESS SPECIFIED		DRAWN PG 05/07/82	
		DEC.	INCHES	CHK	
		.X	±.1	APPD TEM 05/07/82	
03	ADDED IEC DESIGNATIONS	MOL 04/27/12	.XX ±.01	TITLE EXTERNAL WIRING DIAGRAM STAR START - DELTA RUN	
02	REMOVED OBSOLETE STATUS	KJH 06/28/99	.XXX ±.005		
01	REDRAWN ON CAD	DBT 05/30/97	.XXXX ±.0005	MAT'L. Y-CONNECTED START - DELTA CONNECTED RUN	
NO.	REVISION	BY & DATE	CHK ANG ±1/2'	FINISH SINGLE VOLTAGE	PREV
THIS DRAWING IN DESIGN AND DETAIL IS OUR PROPERTY AND MUST NOT BE USED EXCEPT IN CONNECTION WITH OUR WORK ALL RIGHTS OF DESIGN AND INVENTION ARE RESERVED THIS IS AN ELECTRONICALLY GENERATED DOCUMENT - DO NOT SCALE THIS PRINT			RFP	CAD FILE 00519001ME	SIZE A
			DIST	DRAWING NO. 005190-01ME	REV. 03

**CERTIFICATION DATA SHEET**

**Model#:** 324TSTFC6006 AA  
**CONN. DIAGRAM:** 005190.01ME  
**OUTLINE:** 16954260ME

**WINDING#:** T16102016 NONE 1  
**ASSEMBLY:** F1/F2 CAPABLE

**TYPICAL MOTOR PERFORMANCE DATA**

HP	KW	SYNC. RPM	F.L. RPM	FRAME	ENCLOSURE	KVA CODE	DESIGN
40	30	3600	3555&2960	324TS	TEFC	G	B

PH	Hz	VOLTS	FL AMPS	START TYPE	DUTY	INSL	S.F	AMB°C	ELEVATION
3	60/50	575	99- 90/45&80.8/40 .4	LINE OR INVERTER	CONTINUOU S	F5	1.15	40	3300

FULL LOAD EFF: 93.6	3/4 LOAD EFF: 93.6	1/2 LOAD EFF: 92.4	GTD. EFF	ELEC. TYPE	NO LOAD AMPS
FULL LOAD PF: 88.9	3/4 LOAD PF: 86.4	1/2 LOAD PF: 81.7	91.7	SQ CAGE INV RATED	9

F.L. TORQUE	LOCKED ROTOR AMPS	L.R. TORQUE	B.D. TORQUE	F.L. RISE°C
59.1 LB-FT	249.6	124 LB-FT 210	147 LB-FT 250	54

SOUND PRESSURE @ 3 FT.	SOUND POWER	ROTOR WK^2	MAX. WK^2	SAFE STALL TIME	STARTS /HOUR	APPROX. MOTOR WGT
55 dBA	65 dBA	3.24 LB-FT^2	3.2 LB-FT^2	20 SEC.	2	- LBS.

**\*\*\* SUPPLEMENTAL INFORMATION \*\*\***

DE BRACKET TYPE	ODE BRACKET TYPE	MOUNT TYPE	ORIENTATION	SEVERE DUTY	HAZARDOUS LOCATION	DRIP COVER	SCREENS	PAINT
STANDARD	STANDARD	RIGID	HORIZONTAL	FALSE	NONE	FALSE	NONE	BLUE (ENAMEL)

BEARINGS		GREASE	SHAFT TYPE	SPECIAL DE	SPECIAL ODE	SHAFT MATERIAL	FRAME MATERIAL
DE	OPE						
BALL	BALL	POLYREX EM	TS	NONE	NONE	1045 HOT ROLLED (C-204)	CAST IRON
6312	6312						

THERMO-PROTECTORS				THERMISTORS	CONTROL	SPACE /n HEATERS
THERMOSTATS	PROTECTORS	WDG RTDs	BRG RTDs			
NONE	NOT	NONE	NONE	NONE	FALSE	NONE VOLTS

If Inverter equals NONE, contact factory for further information

\*  
N  
O  
T  
E  
S  
\*

INVERTER TORQUE: CONSTANT 2:1
INV. HP SPEED RANGE: 1.5 X BASE SPEED
ENCODER: NONE
NONE NONE
NONE NONE PPR
BRAKE: NONE NONE
NONE P/N NONE
NONE NONE
NONE FT-LB NONE V NONE Hz

DATE: 06/21/2017 03:44:43 AM  
 FORM 3531 REV.3 02/07/99  
 \*\* Subject to change without notice.

Data Sheet

324TSTFC6006

Date: 1/25/2019  
 Customer: \_\_\_\_\_  
 Attention: \_\_\_\_\_  
 Submitted by: FAREEDA DUDEKULA



Submittal

Data @ 575 V

Motor Load Data

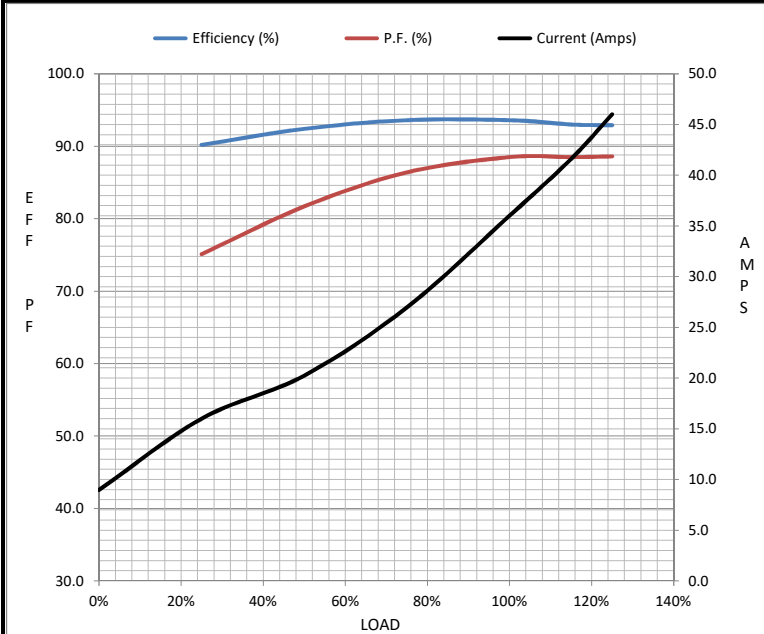
Load	0%	25%	50%	75%	100%	115%	125%	LR
Current (Amps)	9.0	16.0	20.2	27.0	36.0	41.6	46.0	250
Torque (ft-lb)	0.00	21.2	30.0	45.0	59.1	68.0	75.0	124
RPM	3600	3585	3580	3570	3555	3,550	3540	0
Efficiency (%)		90.2	92.4	93.6	93.6	93.0	92.9	
P.F. (%)	9.5	75.1	81.7	86.4	88.5	88.5	88.6	0.0

Motor Speed Data

	LR	Pull-Up	BD	Rated	Idle
Speed (RPM)	0	1200	3400	3555	3600
Current (Amps)	250	240	160	36.0	9.0
Torque (ft-lb)	124	101	147	59.1	0.00

Information Block

HP	40.0			
Sync. RPM	3600			
Frame	324			
Enclosure	TEFC			
Construction	TFC			
Voltage	575 V			
Frequency	60 Hz			
Design	B			
LR Code letter	G			
Service Factor	1.15			
Temp Rise @ FL	55 °C			
Duty	CONT			
Ambient	40 °C			
Elevation	3,300 feet			
Rotor/Shaft wk <sup>2</sup>	3.2 Lb-Ft <sup>2</sup>			
Ref Wdg	T16102016 NONE			
Sound Pressure @ 1M	55 dBA			
VFD Rating	CONSTANT 2:1			
Outline Dwg	16954260ME-324TS			
Conn. Diag	005190.01ME			
Additional Specifications:				
0				
0				
EQUIV CKT (OHMS / PHASE)				
R1	R2	X1	X2	Xm
0.0000	0.0000	0.0000	0.0000	0.0000



Speed - Torque Curve

