

PRODUCT INFORMATION PACKET

marathon®
Motors

Model No: 324TSTDBD6000
Catalog No: GT0876
50,3600,DP,324TS,3/60/200

Miscellaneous

Regal and Marathon are trademarks of Regal Rexnord Corporation or one of its affiliated companies.
©2021 Regal Rexnord Corporation, All Rights Reserved. MC017097E

The logo for Regal Rexnord, featuring a stylized 'R' icon followed by the text 'RegalRexnord'.



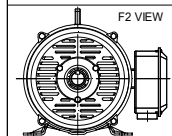
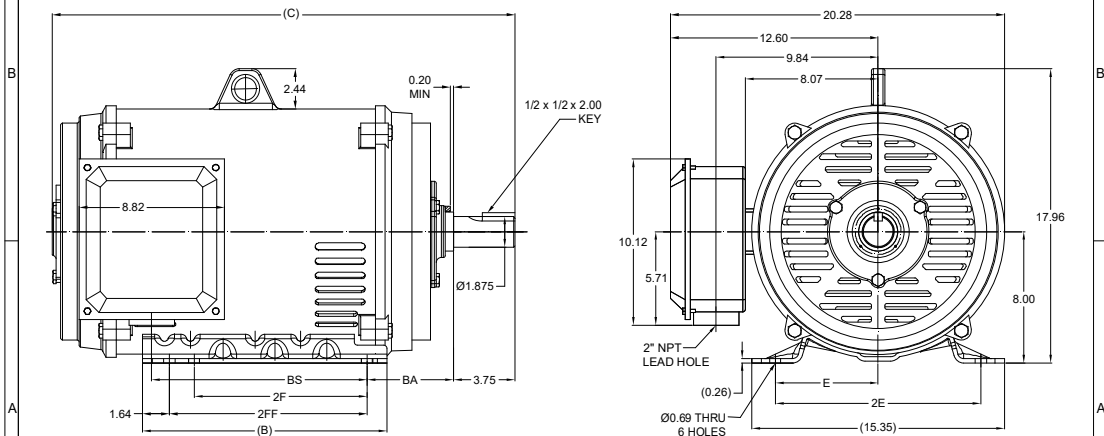
Nameplate Specifications

Technical Specifications

Connection Drawing	EE7300U	Outline Drawing	SS620744-100
--------------------	---------	-----------------	--------------

This is an uncontrolled document once printed or downloaded and is subject to change without notice. Date Created:12/30/2021

DASH NO.	B	C	E	2E	2F	2FF	BA	BS	MOUNTING	FRAME
100	14.85	27.05	6.25	12.50	10.50	12.00	5.25	11.90	F1 OR F2	324TS
200		28.23						13.08		326TS

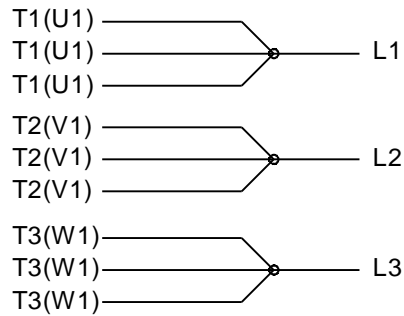


DRAWING REVISION ECO CR-0001470	REVISION BY BISWA APPROVED BY GNK	REV DATE/ E DATE 04/03/2021 04/03/2021
DRAWING UPDATED		
COPYRIGHT (PER REVISION DATE) REGAL BELOIT AMERICA, INC. ALL RIGHTS RESERVED. IMPROPER COPY AND COMPARISON INFORMATION. THIS DOCUMENT IS THE PROPERTY OF REGAL BELOIT AMERICA, INC. (OWNER) AND CONTAINS OWNER'S PROPRIETARY INFORMATION. ANY PERSONAL COPIES OR OTHER USES WITHOUT PERMISSION IS PROHIBITED. BY RECEIVING IT, YOU AGREE THAT IT AND/OR ANY PART OF IT SHALL NOT BE DISCLOSED TO ANY PERSON, CORPORATION OR OTHER ENTITY, UNLESS YOU HAVE BEEN SPECIFICALLY ASSESSED APPROVED IN WRITING IN ADVANCE BY OWNER. THIS DOCUMENT SHALL BE RETURNED TO OWNER UPON REQUEST. IT MAY BE SUBJECT TO CERTAIN INSTRUCTIONS UNDER APPLICABLE REPORT CONTROL LAWS AND REGULATIONS.		

PRIMARY DIMENSIONS ARE INCH
DIMENSIONS IN [BRACKETS]
ARE FOR REFERENCE ONLY

DRAWN BY XZ	DATE 25/02/2016	APPROVED BY DATE	REFERENCE	THIRD ANGLE PROJECTION
Regal Beloit America, Inc.		DESCRIPTION OUTLINE 324/326TS FR NEMA COP RS		
MATERIAL		PROCESS/FINISH		
SIZE B		DRAWING NUMBER SS620744		SHEET 1 OF 1

IF MOTOR HAS 9 LEADS



IF MOTOR HAS 6 LEADS

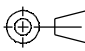


A-9806 DECAL IF CALLED FOR

IF MOTOR HAS 12 LEADS



VIEW OF TERMINAL END

DRAWING REVISION L	REVISION BY AJW	DATE 05-04-2015	TOLERANCES UNLESS OTHERWISE SPECIFIED: <div><div>DEC.</div><div>INCH</div><div>mm</div><div>ANGLE</div></div> <div><div>.X</div><div>±0.1</div><div>[±2.5]</div><div>±7° 30"</div></div> <div><div>.XX</div><div>±0.02</div><div>[±0.51]</div></div> <div><div>XXX</div><div>±0.005</div><div>[±0.127]</div></div> <div><div>.XXXX</div><div>±0.0005</div><div>[±0.0127]</div></div> <div>REMOVE BURRS & BREAK SHARP EDGES: .003/.015 [0.076/.381] X 45° CORNER FILLETS: R.02 [5.1] MACHINED SURFACES: 200 <div>INCH</div> 5.1 <div>mm</div><div>mm SHOWN IN [BRACKETS]</div></div>				DRAWN BY DRS	<div><div>REGAL™</div><div>Regal Beloit America, Inc.</div></div>			
ECO ECO-0077067	APPROVED BY EWH	DATE 05-05-2015					DATE 09-27-1996				
ECO DESCRIPTION UPDATED TO SOLIDWORKS			DESCRIPTION CONN DIAGRAM-EXTERNAL 3Ø SINDLE VOLTAGE								
COPYRIGHT REGAL BELOIT AMERICA, INC. ALL RIGHTS RESERVED. PROPRIETARY AND CONFIDENTIAL INFORMATION - THIS DOCUMENT IS THE PROPERTY OF REGAL BELOIT AMERICA, INC. ("OWNER") AND CONTAINS OWNER'S PROPRIETARY INFORMATION. ANY PERSON, CORPORATION OR OTHER FIRM RECEIVING IT IS DEEMED, BY RECEIVING IT, TO AGREE THAT IT, AND/OR ANY PART OF IT, SHALL NOT BE DISCLOSED TO ANY PERSON, CORPORATION OR OTHER ENTITY, DUPLICATED, AND/OR USED, EXCEPT AS EXPRESSLY APPROVED IN WRITING IN ADVANCE BY OWNER. THIS DOCUMENT SHALL BE RETURNED TO OWNER UPON REQUEST. IT MAY BE SUBJECT TO CERTAIN RESTRICTIONS UNDER APPLICABLE EXPORT CONTROL LAWS AND REGULATIONS.											
			APPROVED BY GK								
			DATE 09-30-1996								
			REFERENCE	MATERIAL		PROCESS/FINISH					
			THIRD ANGLE PROJECTION		SIZE A	DRAWING NUMBER EE7300U	SHEET 1 OF 1				