

# PRODUCT INFORMATION PACKET

**marathon®**  
Motors

Model No: 324THFPA8049  
Catalog No: 324THFPA8049  
40,1800,TEFC,324T,3/60/575  
Miscellaneous

Regal and Marathon are trademarks of Regal Rexnord Corporation or one of its affiliated companies.  
©2021 Regal Rexnord Corporation, All Rights Reserved. MC017097E

The logo for Regal Rexnord, featuring a stylized 'R' icon followed by the text 'RegalRexnord'.

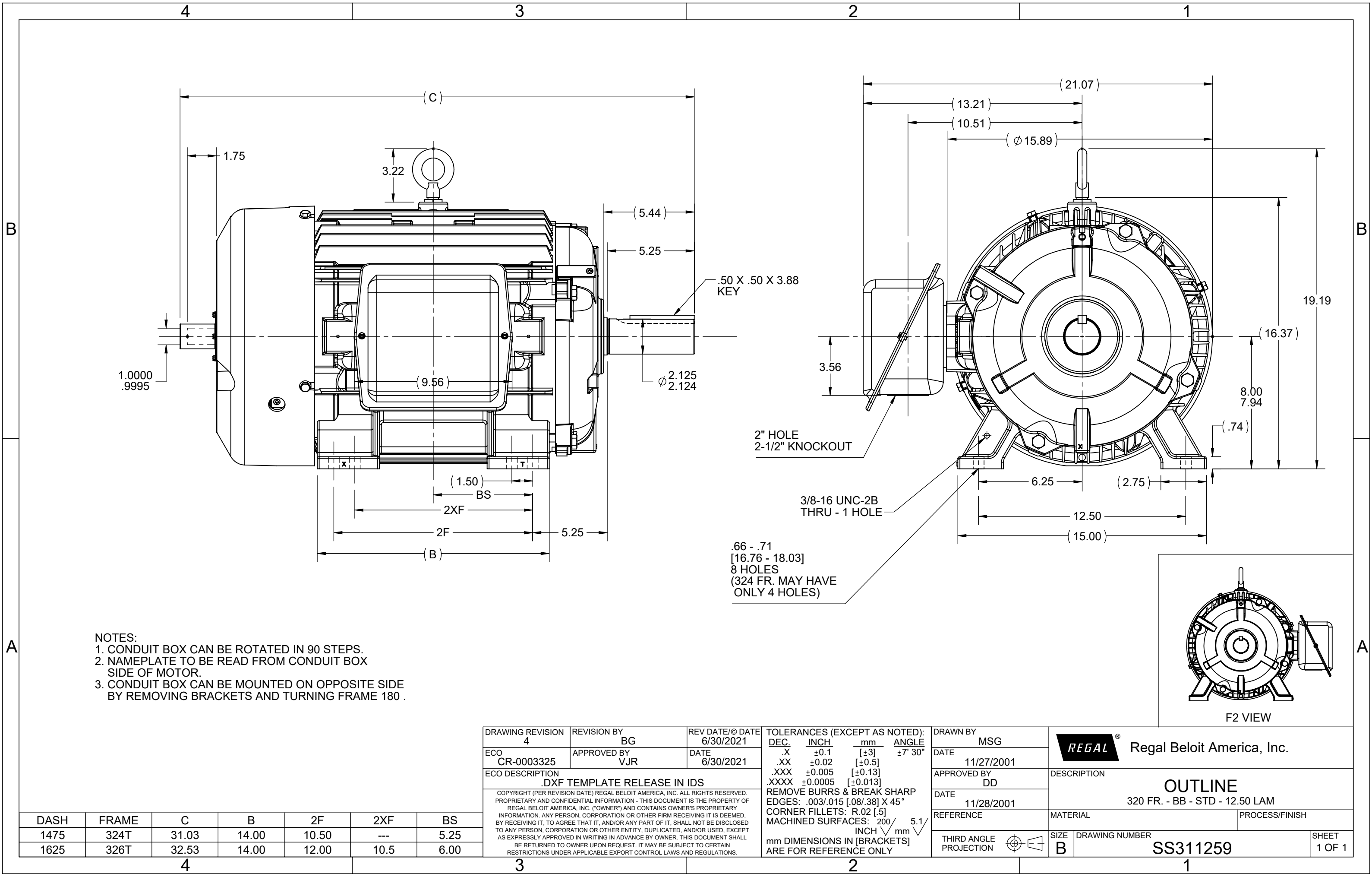
**Nameplate Specifications**

|                        |                   |                            |                             |
|------------------------|-------------------|----------------------------|-----------------------------|
| Output HP              | 40 Hp             | Output KW                  | 29.8 kW                     |
| Frequency              | 60 Hz             | Voltage                    | 575 V                       |
| Current                | 40.0 A            | Speed                      | 1770 rpm                    |
| Service Factor         | 1                 | Phase                      | 3                           |
| Efficiency             | 91.7 %            | Power Factor               | 81.5                        |
| Duty                   | Continuous        | Insulation Class           | F                           |
| Design Code            | B                 | KVA Code                   | G                           |
| Frame                  | 324T              | Enclosure                  | Totally Enclosed Fan Cooled |
| Thermal Protection     | Thermostats (N/C) | Ambient Temperature        | 40 °C                       |
| Drive End Bearing Size | 312               | Opp Drive End Bearing Size | 311                         |
| UL                     | Recognized        | CSA                        | Y                           |
| IP Code                | 43                | Number of Speeds           | 1                           |

**Technical Specifications**

|                       |                              |                       |                 |
|-----------------------|------------------------------|-----------------------|-----------------|
| Electrical Type       | Squirrel Cage Inverter Duty  | Starting Method       | Inverter Only   |
| Poles                 | 4                            | Rotation              | Reversible      |
| Resistance Main       | .124 Ohms                    | Mounting              | Rigid Base      |
| Motor Orientation     | Horizontal                   | Drive End Bearing     | Ball            |
| Opp Drive End Bearing | Ball                         | Frame Material        | Cast Iron       |
| Shaft Type            | Special Extension Both Sides | Assembly/Box Mounting | F1/F2 CAPABLE   |
| Connection Drawing    | A-EE7300T                    | Outline Drawing       | B-SS311259-1475 |

This is an uncontrolled document once printed or downloaded and is subject to change without notice. Date Created:10/26/2021

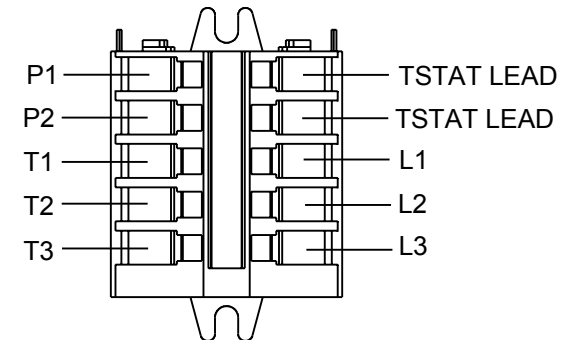


THREE PHASE - SINGLE VOLTAGE  
MOTOR - CONDUIT BOX @ 'A'

TO REVERSE ROTATION:  
INTERCHANGE ANY TWO LINE  
LEAD CONNECTIONS

NOTE FOR FACTORY USE ONLY:  
TO SURGE TEST:  
FOR 3 LEAD COMMON CONNECT:  
CONNECT P1 TO T1 THEN P2 TO L1  
FOR 6 LEAD COMMON CONNECT:  
CONNECT P1 TO BOTH T1  
THEN P2 TO L1

TERMINAL BLOCK WHEN SPECIFIED



VIEW OF TERMINAL END

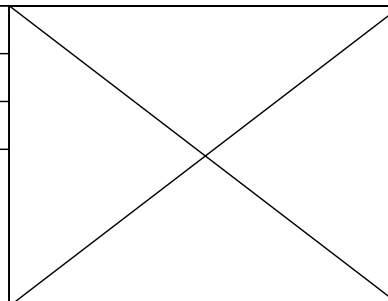
IF MOTOR HAS MULTIPLE  
T'S PER LEAD CONNECT  
TOGETHER LIKE T'S




A-9806 DECAL

T2BM  
T6AW  
T6AL  
T6Z  
T4EG  
T4BF  
T8A  
T6H  
T6A  
T4AX  
T4A  
T2A  
T2F

|   |                      |                    |
|---|----------------------|--------------------|
| DRAWING REVISION<br>AB  | REVISION BY<br>AJW   | DATE<br>07-17-2015 |
| ECO<br>ECO-0081632  | APPROVED BY<br>T.VUE | DATE<br>07-17-2015 |
| ECO DESCRIPTION<br>REV'D IEC MARKINGS PER IEC-60034-8   |                      |                    |
| <small>COPYRIGHT REGAL BELOIT AMERICA, INC. ALL RIGHTS RESERVED.<br/>PROPRIETARY AND CONFIDENTIAL INFORMATION - THIS DOCUMENT IS THE PROPERTY OF<br/>REGAL BELOIT AMERICA, INC. ("OWNER") AND CONTAINS OWNER'S PROPRIETARY<br/>INFORMATION. ANY PERSON, CORPORATION OR OTHER FIRM RECEIVING IT IS DEEMED,<br/>BY RECEIVING IT, TO AGREE THAT IT, AND/OR ANY PART OF IT, SHALL NOT BE DISCLOSED<br/>TO ANY PERSON, CORPORATION OR OTHER ENTITY, DUPLICATED, AND/OR USED, EXCEPT<br/>AS EXPRESSLY APPROVED IN WRITING IN ADVANCE BY OWNER. THIS DOCUMENT SHALL<br/>BE RETURNED TO OWNER UPON REQUEST. IT MAY BE SUBJECT TO CERTAIN<br/>RESTRICTIONS UNDER APPLICABLE EXPORT CONTROL LAWS AND REGULATIONS.</small> |                      |                    |



|                           |  |                           |
|---------------------------|--|---------------------------|
| DRAWN BY<br>LZ            |  Regal Beloit America, Inc. |                           |
| DATE<br>01-04-1994        |  |                           |
| APPROVED BY<br>GK         | DESCRIPTION<br><b>CONN DIAGRAM-EXTERNAL</b><br>3Ø-SINGLE VOLT-MOTOR WITH PROTECTOR                               |                           |
| DATE<br>01-20-1994        |  |                           |
| REFERENCE                 | MATERIAL   | PROCESS/FINISH            |
| THIRD ANGLE<br>PROJECTION | SIZE<br>A  | DRAWING NUMBER<br>EE7300T |
|                           |  | SHEET<br>1 OF 1           |