

# PRODUCT INFORMATION PACKET

**marathon**<sup>®</sup>  
Motors

Model No: 286VTDC6026

Catalog No: V005A

Vertical Pump Motor, 30 & 25 HP, 3 Ph, 60 & 50 Hz, 230/460 & 190/380 V, 1800 & 1500 RPM,  
286TPV Frame, WPI

Regal and Marathon are trademarks of Regal Rexnord Corporation or one of its affiliated companies.

©2023 Regal Rexnord Corporation, All Rights Reserved. MC017097E

**RegalRexnord**

### Nameplate Specifications

Phase	<b>3</b>	Output HP	<b>30 &amp; 25 Hp</b>
Output KW	<b>22.4 &amp; 18.7 kW</b>	Voltage	<b>230/460 &amp; 190/380 V</b>
Speed	<b>1770 &amp; 1475 rpm</b>	Service Factor	<b>1.15 &amp; 1.15</b>
Frame	<b>286TPV</b>	Enclosure	<b>Weather Protected 1</b>
Thermal Protection	<b>No Protection</b>	Efficiency	<b>94.5 &amp; 93.6 %</b>
Ambient Temperature	<b>40 °C</b>	Frequency	<b>60 &amp; 50 Hz</b>
Current	<b>72.5/36.5 &amp; 75/37.5 A</b>	Power Factor	<b>82</b>
Duty	<b>Continuous</b>	Insulation Class	<b>F</b>
Design Code	<b>B</b>	KVA Code	<b>G</b>
Drive End Bearing Size	<b>6311</b>	Opp Drive End Bearing Size	<b>7311B</b>
UL	<b>Recognized</b>	CSA	<b>Y</b>
CE	<b>Y</b>	IP Code	<b>23</b>
Number of Speeds	<b>1</b>		

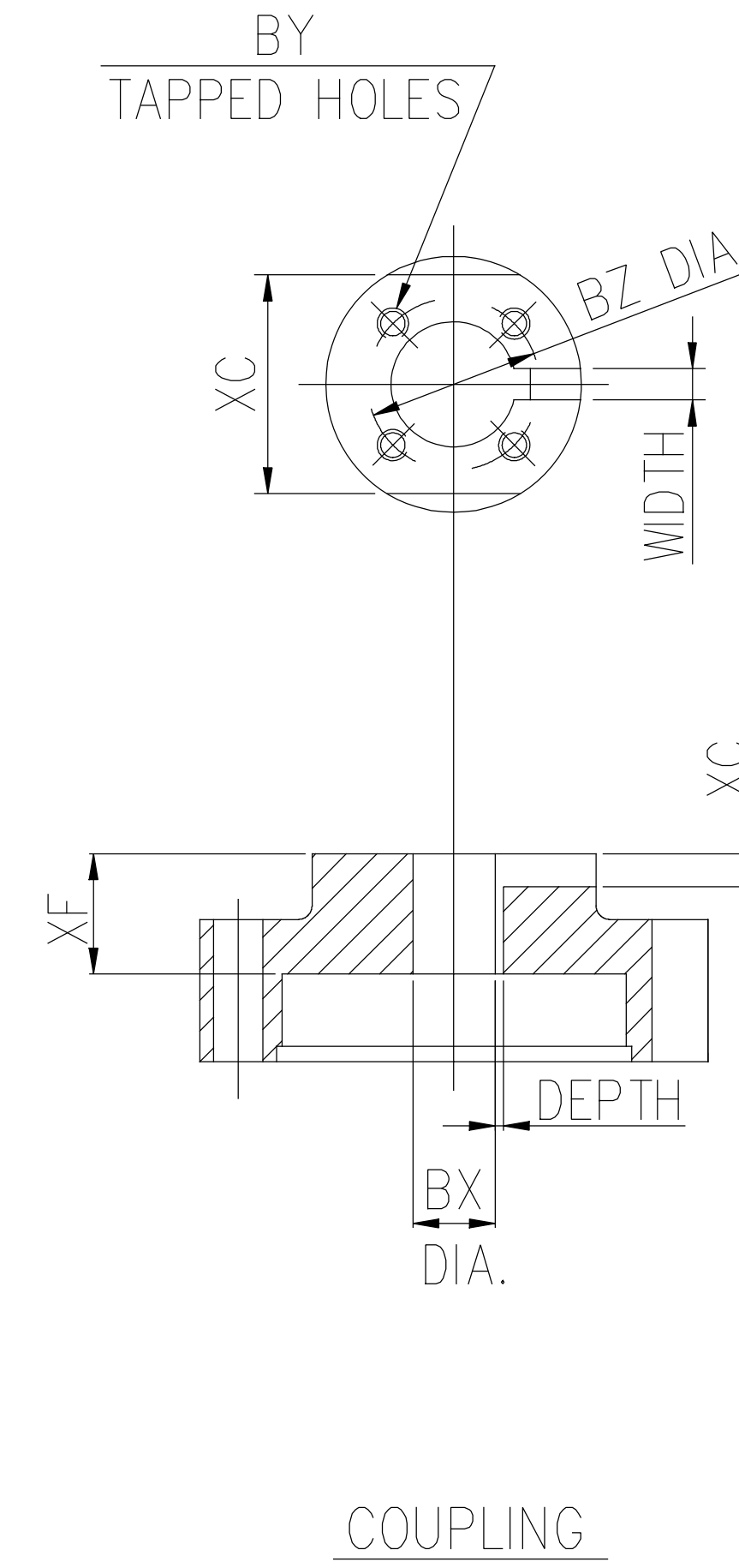
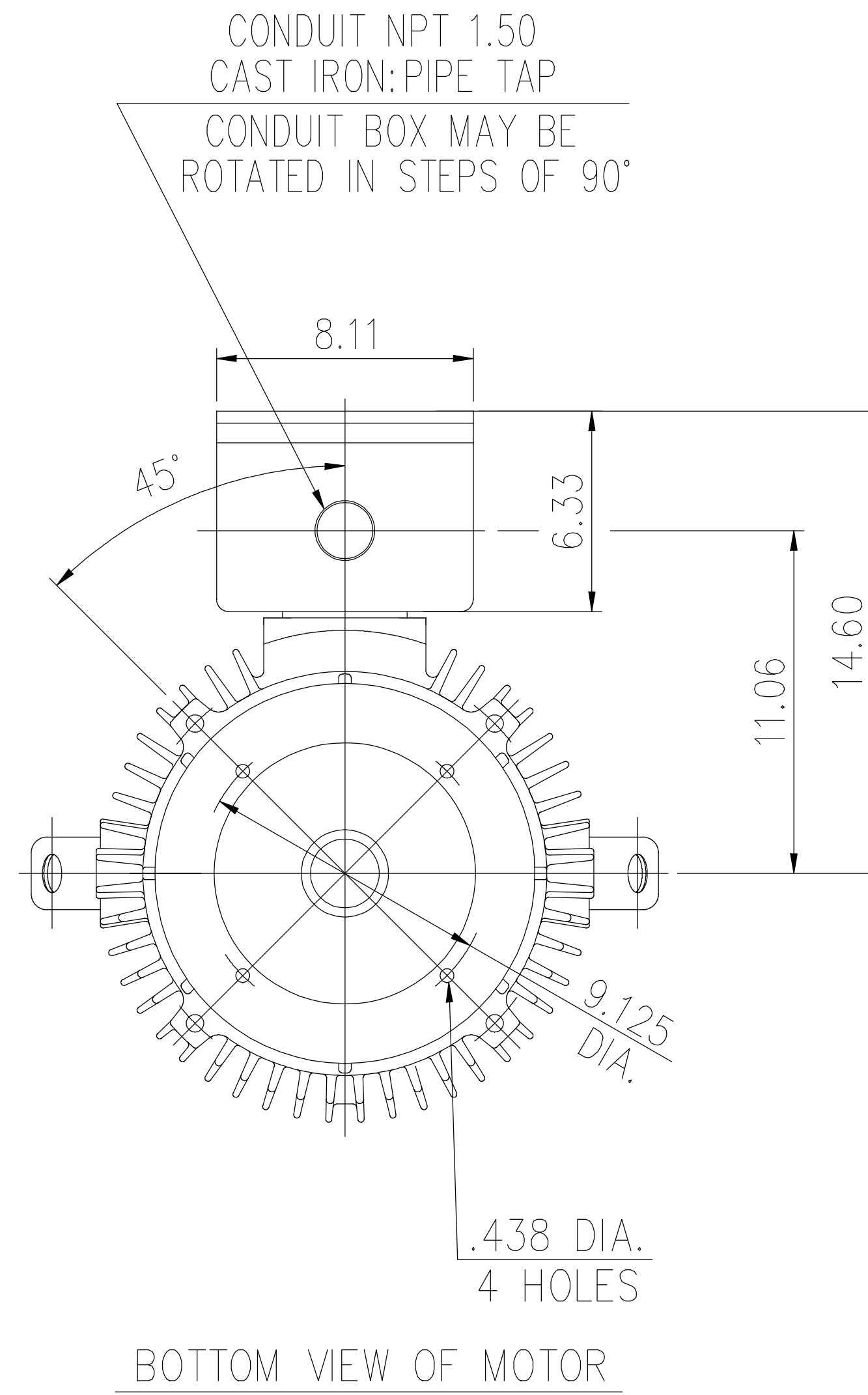
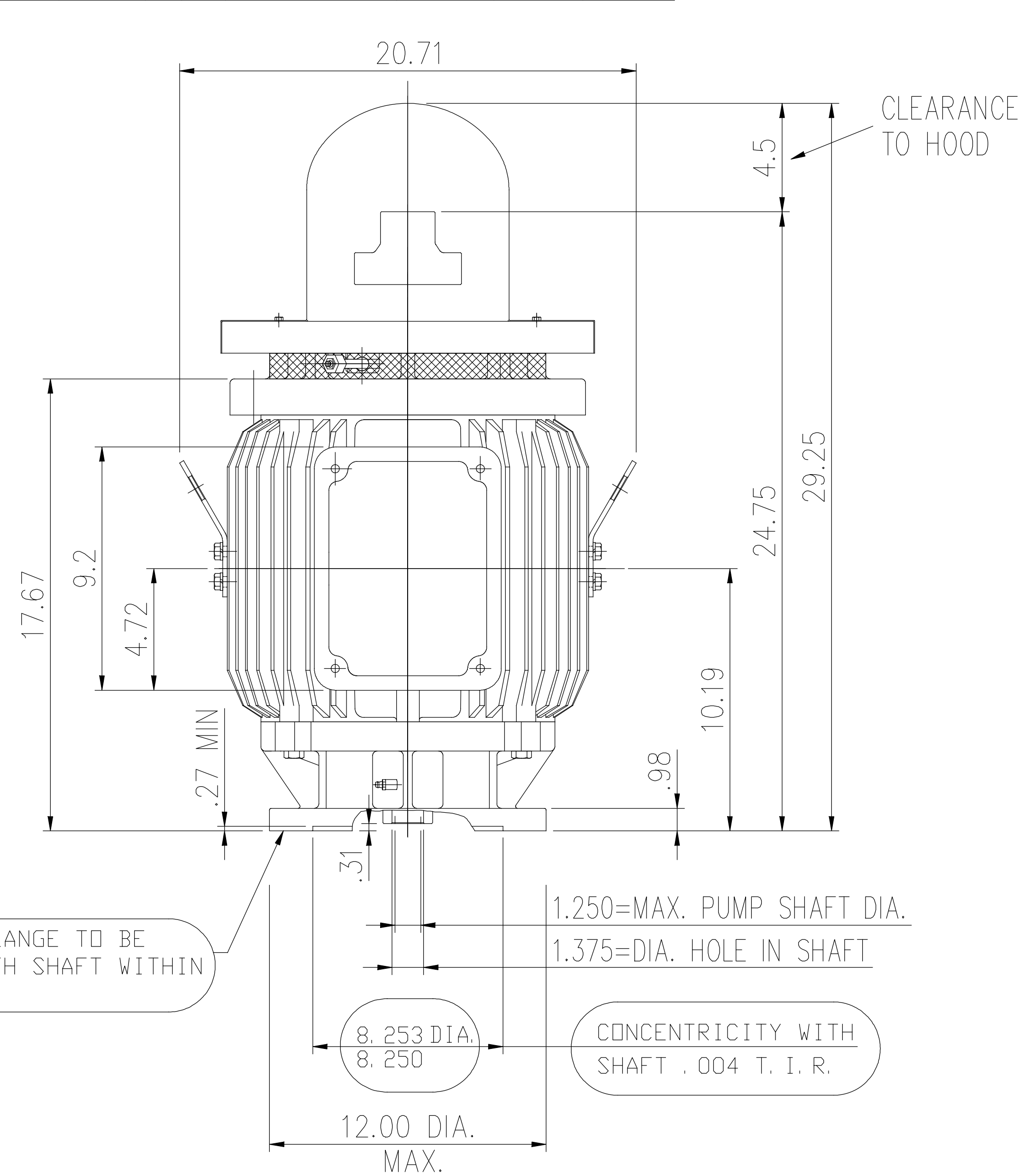
### Technical Specifications

Electrical Type	<b>Squirrel Cage Inverter Rated</b>	Starting Method	<b>Part Wdg Start Low Volt Only &amp; Wye Start Delta Run Or Inverter</b>
Poles	<b>4</b>	Rotation	<b>Counterclockwise Rotation, Reversible without Non-Reversible Ratchet</b>
Mounting	<b>Round</b>	Motor Orientation	<b>Shaft Down</b>
Drive End Bearing	<b>Ball</b>	Opp Drive End Bearing	<b>Single Angular Contact</b>
Frame Material	<b>Cast Iron</b>	Shaft Type	<b>TP</b>
Overall Length	<b>29.25 in</b>	Shaft Diameter	<b>1.375 in</b>
Shaft Extension	<b>0.31 in</b>	Assembly/Box Mounting	<b>F1/F2 CAPABLE</b>
Inverter Load	<b>VARIABLE 3:1</b>		
Outline Drawing	<b>SS620836</b>	Connection Drawing	<b>EE7308DX</b>



SS620836

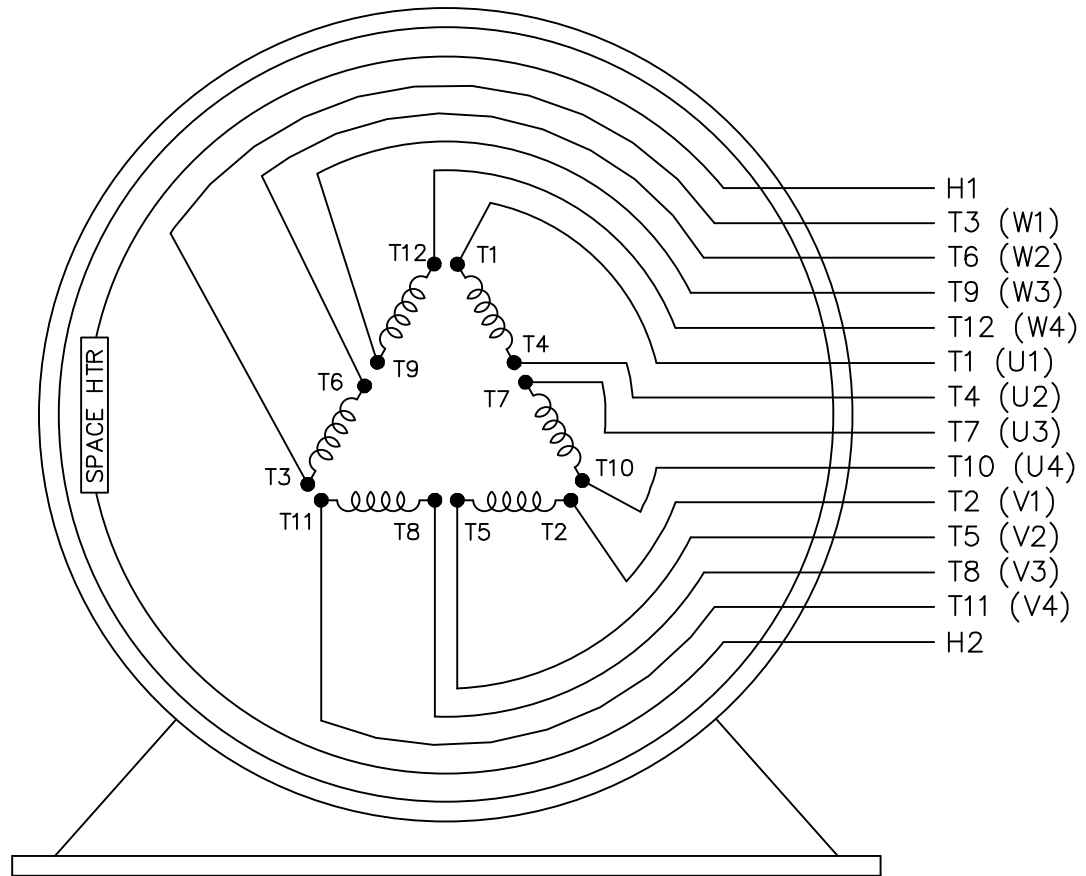
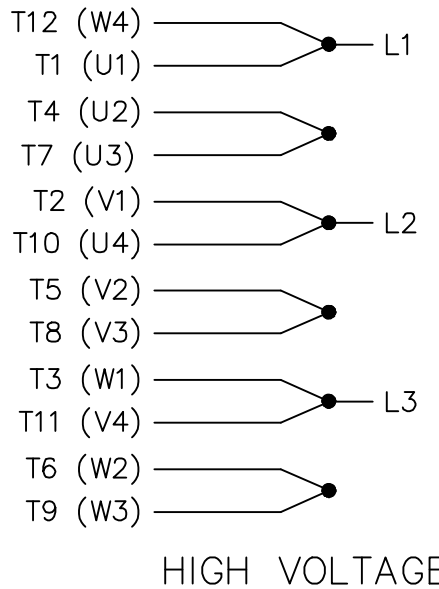
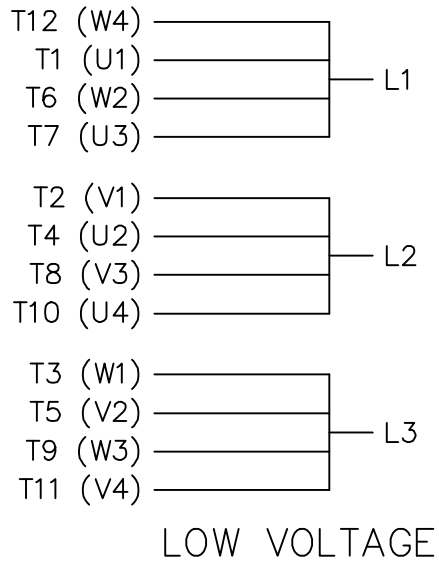
COUPLING	BX DIA.	KEYWAY		BY	BZ	XF	XC
		WIDE	DEEP				
	1.001	0.250	0.140	10-32UNF	1.375	1.850	0.430
	1.188	0.250	0.140	1/4-20UNC	1.750	1.850	0.430
	1.251	0.250	0.140	1/4-20UNC	1.750	1.850	0.430
	0.751	N/A	N/A	N/A	N/A	N/A	N/A



- (1) DIMENSIONS ARE IN INCHES.
- (2) DRIVE END BEARING 6311  
OPPOSITE DRIVE END BEARING 7311B
- (3) APPROXIMATE WEIGHT = 490 lbs

(4) END OF LINE TESTS - SPECIFIC TO EACH RATING  
 \*NO LOAD AMPS @ FULL VOLTAGE  
 \*NO LOAD WATTS @ FULL VOLTAGE  
 \*VIBRATION MEETS MG-1 STANDARD  
 BALANCE 0.15 IN/S 3.8 MM/S

		TOLERANCES UNLESS SPECIFIED		REGAL REGAL - BELOIT CORPORATION		DRAWN	
		DEC.	INCHES			CHK	
		.X	±.1			APPD	
C	UPDATED PER MARK-UPS ECO-0151417	WGJ	9-10-2018	AL	.XX ±.03	TITLE	
B	RE-PUBLISHED ECO-0125813	WGJ	6-21-2017	EMH	.XXX ±.005	OUTLINE	
A	RELEASED FOR PRODUCTION ECO-0125213	WGJ	6-13-2017	AL	.XXXX ±.0005	284/286TP12 FRAME	
NO.	REVISION	BY & DATE	CHK	ANG	±7'30"	SCALE	
				RFP	CAD FILE	REF	
THIS DRAWING IN DESIGN AND DETAIL IS OUR PROPERTY AND MUST NOT BE USED EXCEPT IN CONNECTION WITH OUR WORK ALL RIGHTS OF DESIGN AND INVENTION ARE RESERVED THIS IS AN ELECTRONICALLY GENERATED DOCUMENT - DO NOT SCALE THIS PRINT				DIST		SIZE	DRAWING NO.
						B	SS620836
							REV. C



VIEW OF TERMINAL END

				TOLERANCES UNLESS SPECIFIED		MARATHON ELECTRIC	DRAWN KL 02-05-1999			
				DEC.	INCHES		CHK DJK 02-05-1999			
				.X	± -	TITLE CONNECTION DIAGRAM 12 LEADS - 3 PHASE - 2/1 DELTA	APPD DJK 02-05-1999	SCALE 1=1		
2	ADDED IEC MARKINGS	MU110339	MSG 10-15-2012	.XXX	± -		REF			
1	NEW DRAWING	MU23624	KL 02-05-1999	DJK .XXXX	± -	MAT'L.	FMF MU23624			
NO.	REVISION	BY & DATE	CHK	ANG	± -	FINISH	PREV			
THIS DRAWING IN DESIGN AND DETAIL IS OUR PROPERTY AND MUST NOT BE USED EXCEPT IN CONNECTION WITH OUR WORK ALL RIGHTS OF DESIGN AND INVENTION ARE RESERVED THIS IS AN ELECTRONICALLY GENERATED DOCUMENT - DO NOT SCALE THIS PRINT				RFP	02-05-1999	CAD FILE EE7308DX	SIZE A	DRAWING NO. EE7308DX	PAGE OF 2	REV. 2
				DIST						



**P.O. BOX 8003  
WAUSAU, WI 54401-8003  
PH. 715-675-3311**

**CERTIFICATION DATA SHEET**

**CUSTOMER:**  
**ORDER #:**  
**CONN. DIAGRAM:** EE7308DX  
**OUTLINE:** SS620836  
**WINDING #:** TPE2864001 1

**CUSTOMER PO#:**  
**MODEL #:** 286VTDC6026 AA  
**CUSTOMER PART #:**  
**MOUNTING:** F1/F2 CAPABLE

**TYPICAL MOTOR PERFORMANCE DATA**

HP	KW	SYNC. RPM	F.L. RPM	FRAME	ENCLOSURE	KVA CODE	DESIGN
30&25	22.4&18.7	1800	1770&1475	286TPV	WPI	G	B

PH	Hz	VOLTS	AMPS	START TYPE	DUTY	INSL	S.F.	AMB°C
3	60/50	230/460&190/380	72.5/36.5&75/37.5	PWS (LV ONLY) & YDRUN OR INV	CONTINUOUS	F	1.15/1.15	40

FULL LOAD EFF:	94.5&93.6	3/4 LOAD EFF:	94.1	1/2 LOAD EFF:	93.6	GTD. EFF		ELEC. TYPE	
FULL LOAD PF:	82&81	3/4 LOAD PF:	78	1/2 LOAD PF:	69.5	93.6		SQ CAGE INV RATED	

F.L. TORQUE	LOCKED ROTOR AMPS	L.R. TORQUE	B.D. TORQUE	F.L. RISE°C
88.8 LB-FT	434 / 217	190 LB-FT 212 %	230 LB-FT 258 %	45

SOUND PRESSURE @ 3 FT.	SOUND POWER	ROTOR WK^2	MAX. WK^2	SAFE STALL TIME	STARTS / HOUR	APPROX. MOTOR WGT
68 dBA	78 dBA	4.8 LB-FT^2	389 LB-FT^2	12 SEC.	2	570 LBS.

**\*\*\* SUPPLEMENTAL INFORMATION \*\*\***

DE BRACKET TYPE	ODE BRACKET TYPE	MOUNT TYPE	ORIENTATION	SEVERE DUTY	HAZARDOUS LOCATION	DRIP COVER	SCREENS	PAINT
P-BASE-12	STANDARD	ROUND	SHAFT DOWN	FALSE	NONE	TRUE	RODENT	BLUE (ENAMEL)

BEARINGS		GREASE	SHAFT TYPE	SPECIAL DE	SPECIAL ODE	SHAFT MATERIAL	FRAME MATERIAL
DE	ODE						
BALL	SINGLE ANGULAR CONTACT	POLYREX EM	TP	NONE	NONE	1045 HOT ROLLED (C-204)	CAST IRON
6311	7311B						

THERMO-PROTECTORS				THERMISTORS	CONTROL	SPACE HEATERS
THERMOSTATS	PROTECTORS	WDG RTDs	BRG RTDs			
NONE	NOT	NONE	NONE	NONE	FALSE	110 VOLTS

\*  
N  
O  
T  
E  
S  
\*

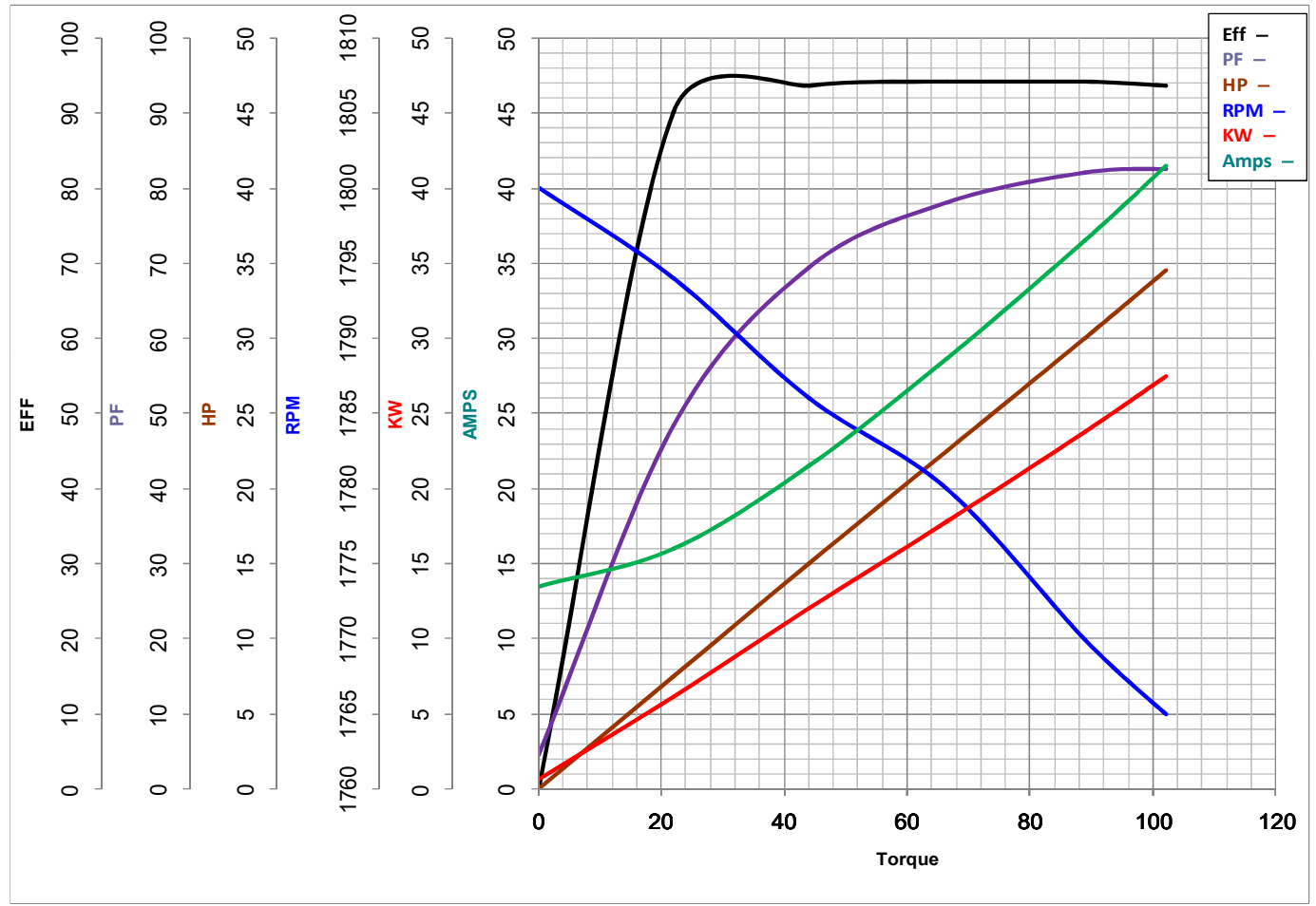
<b>INVERTER TORQUE:</b> VARIABLE 3:1 <b>INV. HP SPEED RANGE:</b> NONE
<b>ENCODER:</b> NONE NONE NONE NONE NONE PPR
<b>BRAKE:</b> NONE NONE NONE P/N NONE NONE NONE NONE FT-LB NONE V NONE Hz

**PREPARED BY:** Dinesh  
Suddula **DATE:**  
02/18/2019 01:00:51 AM  
FORM 3531 REV.3 02/07/99  
\*\* Subject to change without notice.



**MARATHON ELECTRIC CORPORATION**  
TYPICAL PERFORMANCE CURVE for AC MOTOR

Customer \_\_\_\_\_ Curve at 460 Volts HP 30&25 PHASE 3  
 Model No 286VTDC6026 60 HZ  
30 HP VOLTS 230/460&190/380  
 Catalog No V005A HZ 60&50 RPM 1770&1475



Torque in Lb.Ft

FL TORQUE 88.8 Lb.Ft  
 BD TORQUE 230.0 Lb.Ft  
 LR TORQUE 190 Lb.Ft

FL AMPS 72.5/36.5  
 PU TORQUE 165.0 Lb.Ft  
 LR AMPS 217

WINDING TPE2864001-1

Date 11/2/2018