

PRODUCT INFORMATION PACKET



Model No: 286TTTNA17206
Catalog No: 286TTTNA17206
25/6.25,1500/750,TEAO,286T,3/60/415

Regal and Marathon are trademarks of Regal Rexnord Corporation or one of its affiliated companies.
©2025 Regal Rexnord Corporation, All Rights Reserved. MC017097E



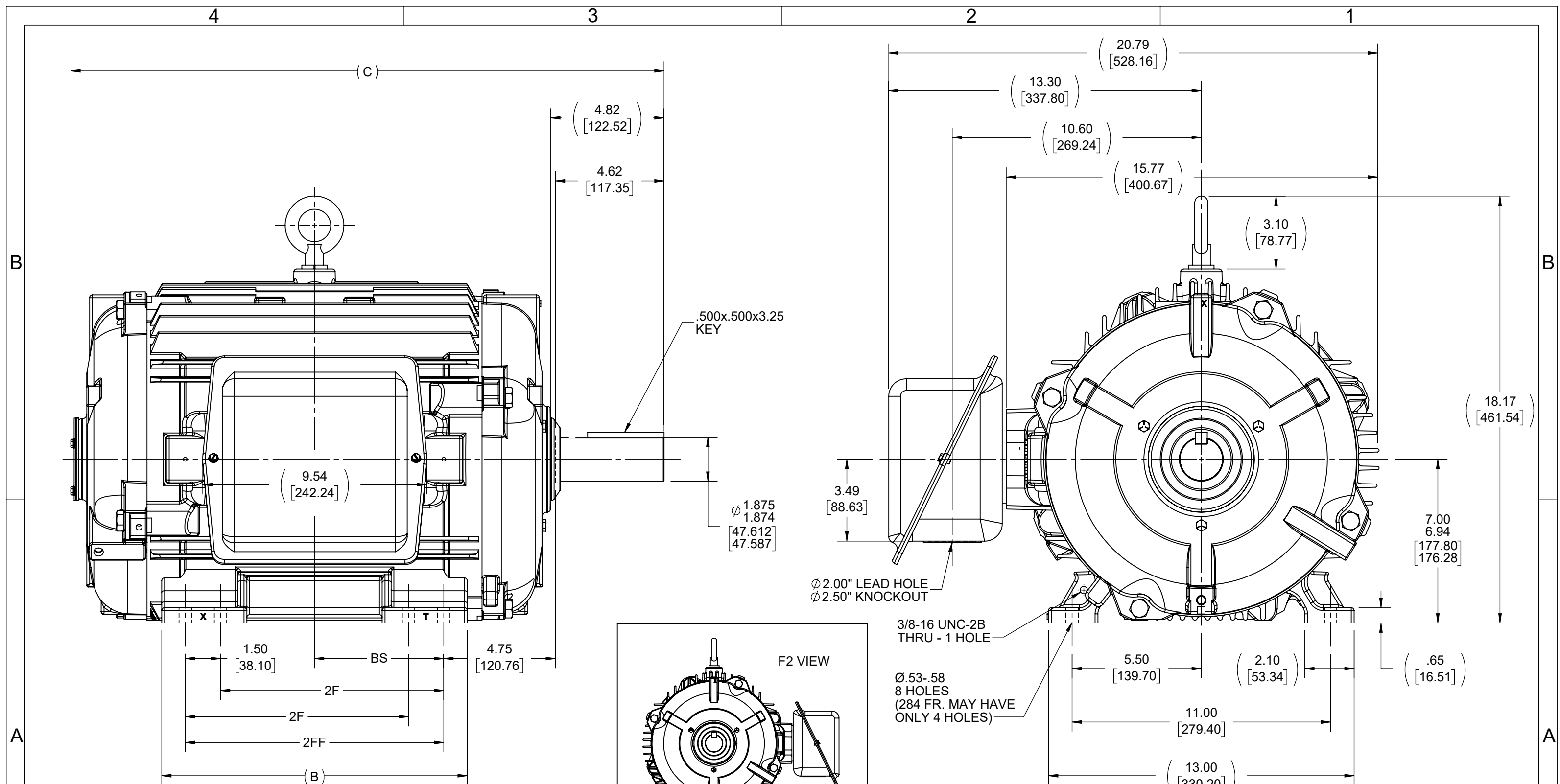
Nameplate Specifications

Phase	3	Output HP	25,6.25 Hp
Output KW	18.7 kW	Voltage	415 V
Speed	1475,730 r/min	Service Factor	1.15
Frame	286T	Enclosure	Totally Enclosed Air Over
Thermal Protection	No Protection	Efficiency	90.2 %
Ambient Temperature	50 °C	Frequency	50 Hz
Current	33,11.4 A	Power Factor	87
Duty	Continuous	Insulation Class	H
Design Code	1VT	KVA Code	H
Drive End Bearing Size	311	Opp Drive End Bearing Size	210
UL	Recognized	CSA	Y
CE	N	IP Code	43
Number of Speeds	2		

Technical Specifications

Electrical Type	Squirrel Cage Induction Run	Starting Method	Across The Line
Poles	4/8	Rotation	Reversible
Resistance Main	.325 O	Mounting	Rigid Base
Motor Orientation	Horizontal	Drive End Bearing	Ball
Opp Drive End Bearing	Ball	Frame Material	Cast Iron
Shaft Type	T	Assembly/Box Mounting	F1/F2 CAPABLE
Outline Drawing	B-SS311162-1425	Connection Drawing	A-EE7322

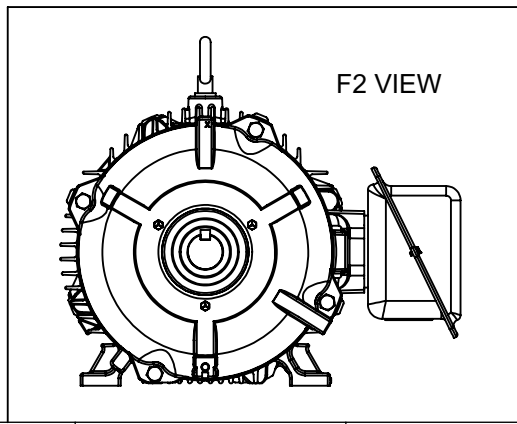
This is an uncontrolled document once printed or downloaded and is subject to change without notice. Date Created:04/08/2025



NOTES:

1. CONDUIT BOX CAN BE ROTATED IN 90° STEPS.
2. CONDUIT BOX CAN BE MOUNTED ON OPPOSITE SIDE BY REMOVING BRACKETS AND ROTATING FRAME 180°.
3. NAMEPLATE READ FROM CONDUIT BOX SIDE OF MOTOR.

DASH	FRAME	B	C	BS	2F	2FF
1275	284T	12.50	23.68	4.75	---	9.50
1425	284/286T	13.00	25.24	5.50	9.50	11.00




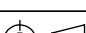
DRAWING REVISION H	REVISION BY BBR	REV DATE/© DATE 12/6/2023
REQUEST NUMBER CR-0015545	APPROVED BY ST	DATE 12/6/2023
REQUEST NUMBER DESCRIPTION OUTLINE UPDATED WITH FRAME		
<p>COPYRIGHT (PER REVISION DATE) REGAL BELOIT AMERICA, INC. ALL RIGHTS RESERVED. PROPRIETARY AND CONFIDENTIAL INFORMATION - THIS DOCUMENT IS THE PROPERTY OF REGAL BELOIT AMERICA, INC. ("OWNER") AND CONTAINS OWNER'S PROPRIETARY INFORMATION. ANY PERSON, CORPORATION OR OTHER FIRM RECEIVING IT IS DEEMED, BY RECEIVING IT, TO AGREE THAT IT, AND/OR ANY PART OF IT, SHALL NOT BE DISCLOSED TO ANY PERSON, CORPORATION OR OTHER ENTITY, DUPLICATED, AND/OR USED, EXCEPT AS EXPRESSLY APPROVED IN WRITING IN ADVANCE BY OWNER. THIS DOCUMENT SHALL BE RETURNED TO OWNER UPON REQUEST. IT MAY BE SUBJECT TO CERTAIN RESTRICTIONS UNDER APPLICABLE EXPORT CONTROL LAWS AND REGULATIONS.</p>		

TOLERANCES (EXCEPT AS NOTED):

<u>DEC.</u>	<u>INCH</u>	<u>mm</u>	<u>ANGLE</u>
.X	±0.1	[±3]	±7° 30"
.XX	±0.03	[±0.8]	
.XXX	±0.005	[±0.13]	
.XXXX	±0.0005	[±0.013]	

REMOVE BURRS & BREAK SHARP
EDGES: .003/.015 [.08/.38] X 45°
CORNER FILLETS: R.02 [.5]
MACHINED SURFACES: 200 / INCH 5.1 / mm

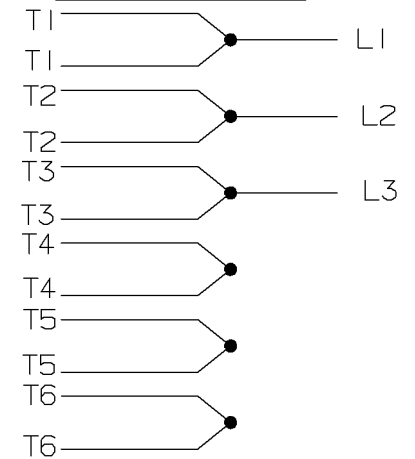
mm DIMENSIONS IN [BRACKETS]
ARE FOR REFERENCE ONLY

DRAWN BY DAH		 Regal Beloit America, Inc.	
DATE 05-08-2001			
APPROVED BY BW		DESCRIPTION <div style="text-align: center;"> OUTLINE 280T FR. - TEAO - STD - 12.50 LAM </div>	
DATE 05-10-2001			
REFERENCE	MATERIAL	PROCESS/FINISH	
THIRD ANGLE PROJECTION 	SIZE B	DRAWING NUMBER <div style="text-align: center;"> SS311162 </div>	SHEET 1 OF 1

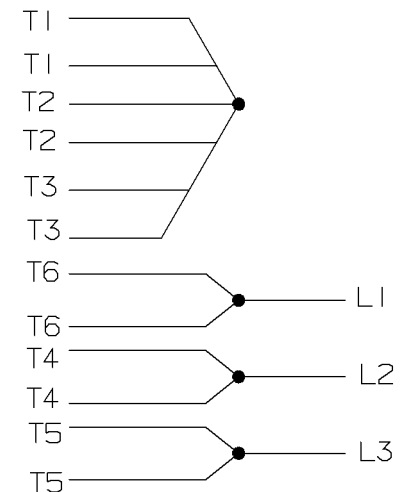
A- EE7322

FOR DUAL LEADS

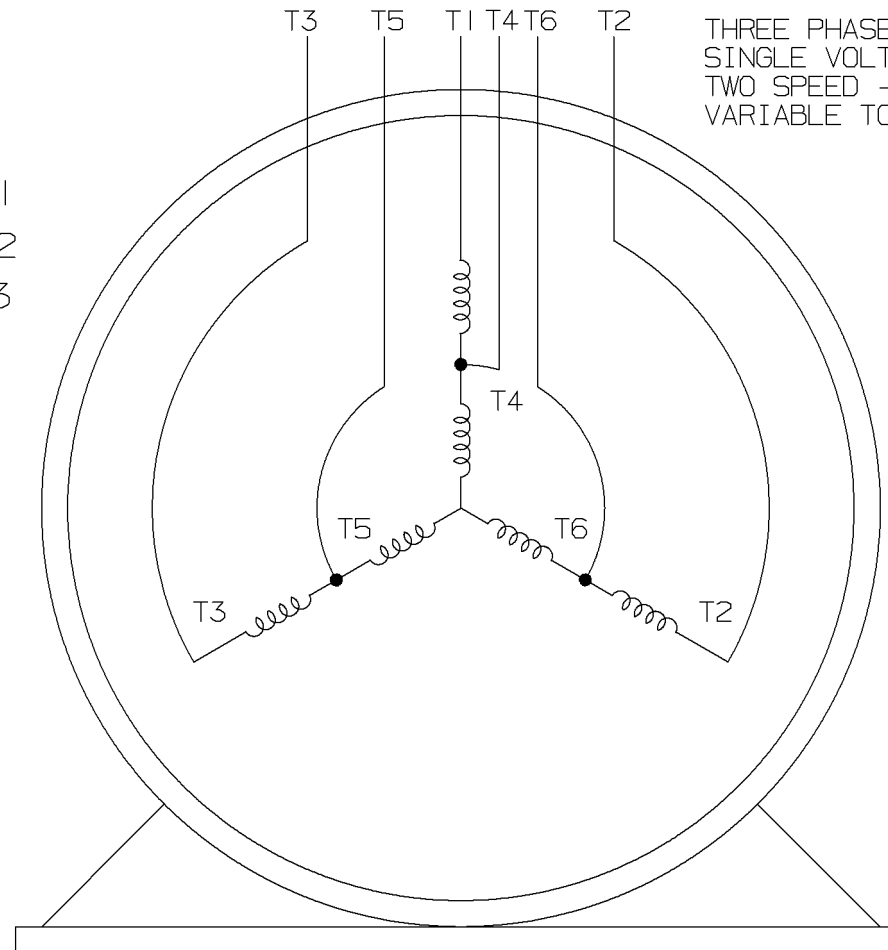
LOW SPEED



HIGH SPEED

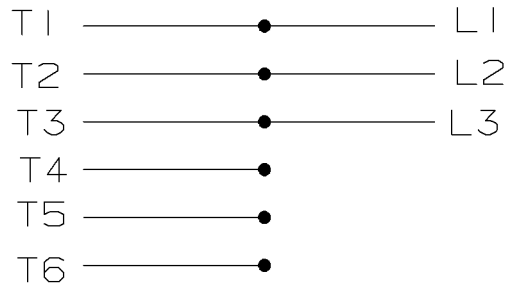


THREE PHASE MOTOR
SINGLE VOLTAGE
TWO SPEED - SGL. WDG.
VARIABLE TORQUE

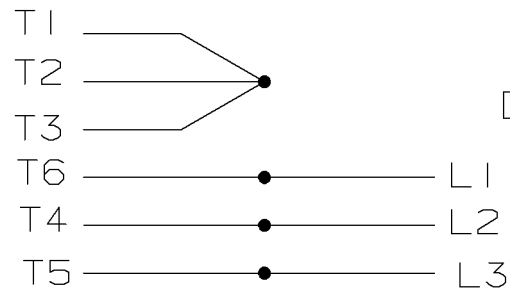


VIEW OF TERMINAL END

LOW SPEED




HIGH SPEED



T612C

T48B

				✓ MAX. SURFACE ROUGHNESS UNLESS NOTED OTHERWISE	UNLESS OTHERWISE SPECIFIED DIMENSIONS ARE IN INCHES TOL. ON XX± XXX± .005 XXXX± .0005 ANGLES±					
				MATL SPEC				DRAWN BY PGK	12-26-1996	
				FINISH				CHKD BY ML	01-07-1997	
7	01-08-1997	REDRAWN ON CADD CN 24000-27	PGK	REFERENCE DRW.	WAUSAU, WISCONSIN 54401			APPD BY TB	01-07-1997	
				PART NAME CONNECTION DIAGRAM					DRWG NO	
REV	DATE	CHANGE	NAME	3Ø - SINGLE VOLTAGE - 2 SPEED					A - EE7322	

SHOP BOOK

PURCHASED

DISTRIBUTION - WA - LB - WP - LM - BR

CADD FILE NO.

EE7322