

PRODUCT INFORMATION PACKET

marathon®
Motors

Model No: 286TTGCD16577
Catalog No: E507A
20,1200,EPFC,286T,3/60/230/460

Regal and Marathon are trademarks of Regal Rexnord Corporation or one of its affiliated companies.
©2023 Regal Rexnord Corporation, All Rights Reserved. MC017097E

The logo for Regal Rexnord, featuring a stylized 'R' icon followed by the text 'RegalRexnord'.

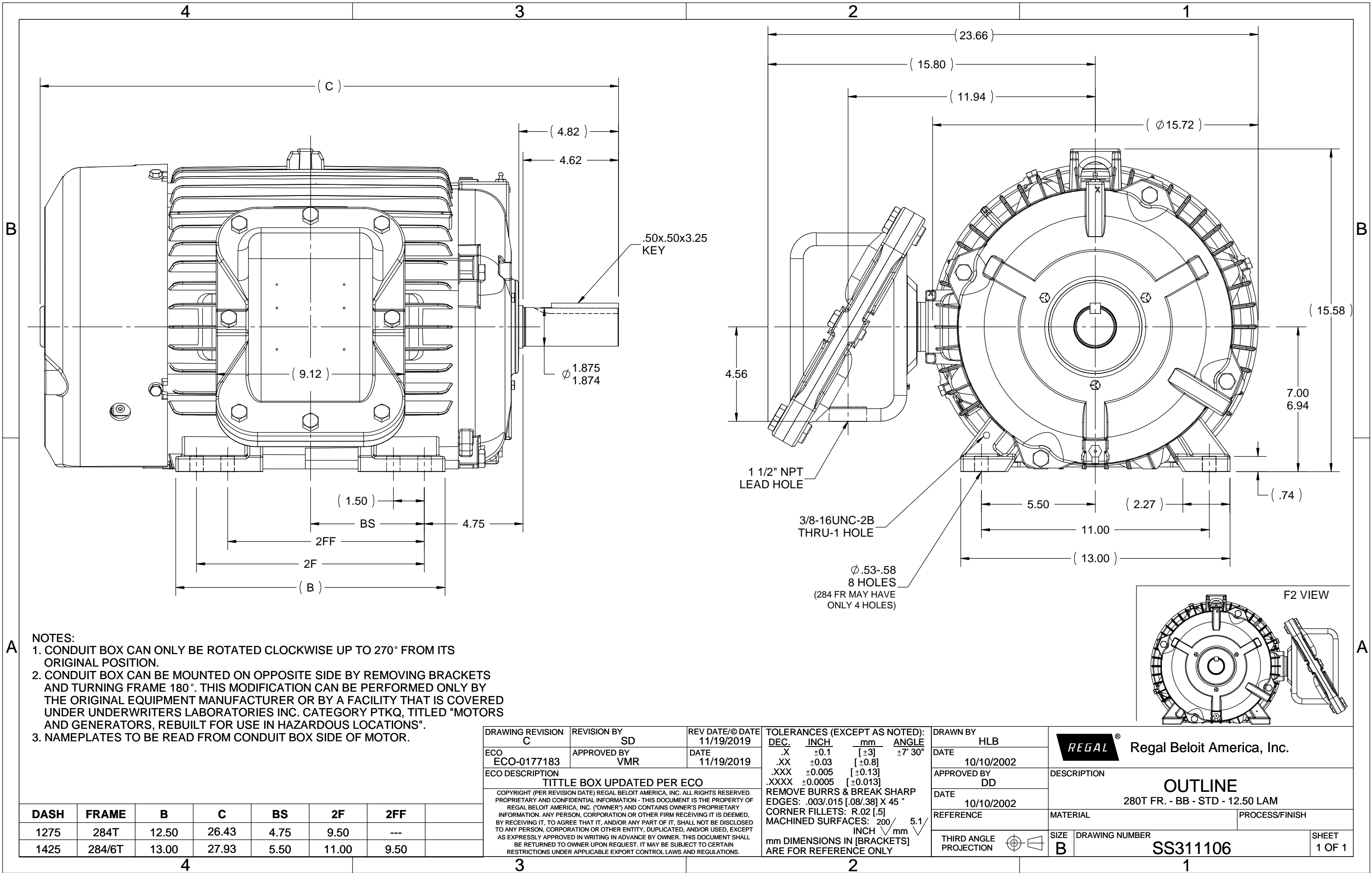


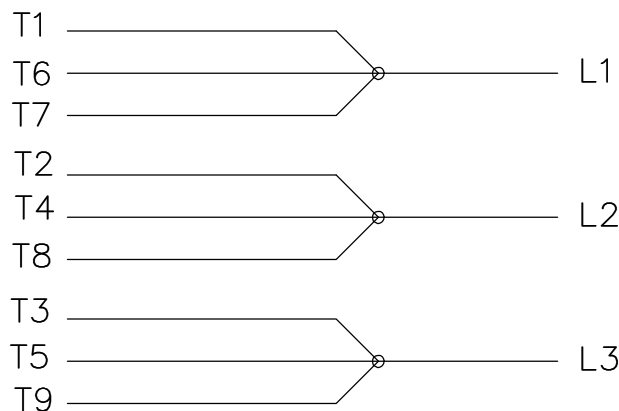
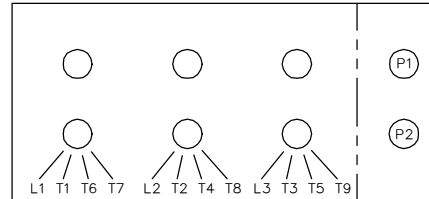
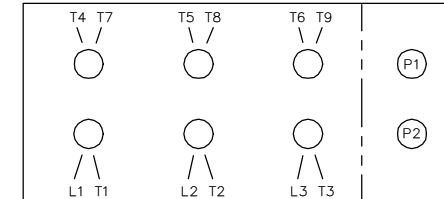
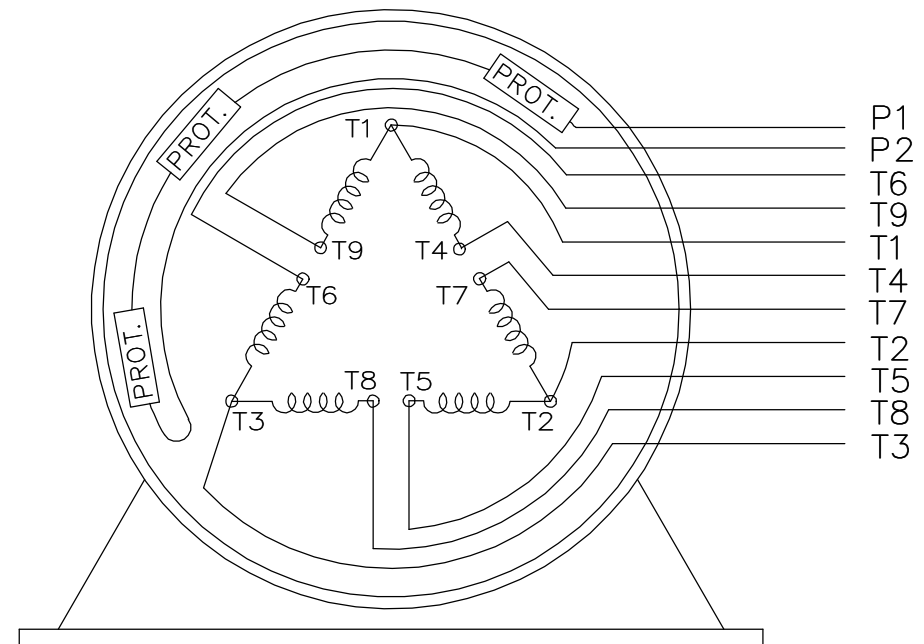
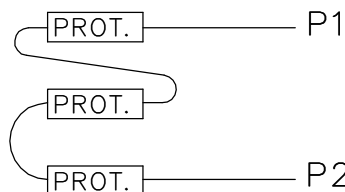
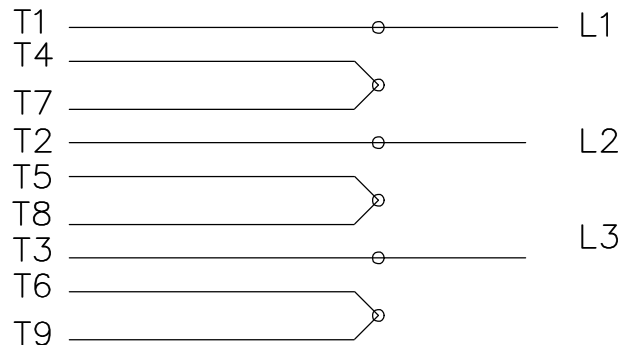
Nameplate Specifications

Technical Specifications


Outline Drawing	SS311106-1425	Connection Drawing	EE7308AD
-----------------	---------------	--------------------	----------

This is an uncontrolled document once printed or downloaded and is subject to change without notice. Date Created:02/17/2023



LOW VOLTAGELOW VOLTAGEHIGH VOLTAGEHIGH VOLTAGEVIEW OF TERMINAL END

WHEN MORE THAN ONE PROT. IS USED; PROT. ARE CONNECTED IN SERIES

DRAWING REVISION L	REVISION BY JP	REV DATE/© DATE 06-21-2019	TOLERANCES (EXCEPT AS NOTED):				DRAWN BY MJD	 Regal Beloit America, Inc.		
ECO ECO-0168744	APPROVED BY MH	DATE 06-21-2019	DEC. .X	INCH ±0.1	mm [±3]	ANGLE ±7° 30'	DATE 12-19-1997			
ECO DESCRIPTION UPDATED TO CURRENT STANDARDS			.XX	±0.02	[±0.5]		APPROVED BY GK	CONN DIAGRAM-EXTERNAL		
COPYRIGHT (PER REVISION DATE) REGAL BELOIT AMERICA, INC. ALL RIGHTS RESERVED. PROPRIETARY AND CONFIDENTIAL INFORMATION - THIS DOCUMENT IS THE PROPERTY OF REGAL BELOIT AMERICA, INC. ("OWNER") AND CONTAINS OWNER'S PROPRIETARY INFORMATION. ANY PERSON, CORPORATION OR OTHER FIRM RECEIVING IT IS DEEMED, BY RECEIVING IT, TO AGREE THAT IT, AND/OR ANY PART OF IT, SHALL NOT BE DISCLOSED TO ANY PERSON, CORPORATION OR OTHER ENTITY, DUPLICATED, AND/OR USED, EXCEPT AS EXPRESSLY APPROVED IN WRITING IN ADVANCE BY OWNER. THIS DOCUMENT SHALL BE RETURNED TO OWNER UPON REQUEST. IT MAY BE SUBJECT TO CERTAIN RESTRICTIONS UNDER APPLICABLE EXPORT CONTROL LAWS AND REGULATIONS.			.XXX	±0.005	[±0.13]		DATE 01-07-1998			
			.XXXX	±0.0005	[±0.013]		REFERENCE	MATERIAL		
			REMOVE BURRS & BREAK SHARP EDGES: .003/.015 [.08/.38] X 45°				THIRD ANGLE PROJECTION	PROCESS/FINISH		
			CORNER FILLETS: R.02 [.5]				SIZE A	DRAWING NUMBER EE7308AD		
			MACHINED SURFACES: 200/ 5.1 INCH mm					SHEET 1 OF 1		
			mm DIMENSIONS IN [BRACKETS] ARE FOR REFERENCE ONLY							



P.O. BOX 8003
WAUSAU, WI 54401-8003
PH. 715-675-3311

DATA VOLTS: 460

CERTIFICATION DATA SHEET

CUSTOMER: _____ CUSTOMER P.O. #: _____
ORDER #: _____ REFERENCE MODEL #: 286TTGCD16577
CONN. DIAGRAM: EE7308AD CAT #: E507A
OUTLINE: SS311106-1425 CUSTOMER PART #: _____
WINDING: HA31806015 NONE 2 MOUNTING: F1 ONLY
SPEED: _____ FAN: 504205B

TYPICAL MOTOR PERFORMANCE DATA

HP	KW	SYNC RPM	FL RPM	FRAME	ENCLOSURE	TYPE	KVA CODE	DESIGN
20	14.9	1200	1180	286T	EPFC	TFC	G	B

PH	HZ	VOLTS	AMPS	START TYPE	DUTY	INSL	S.F.	AMB	ELEV.
3	60	230/460	51/25.5	LINE OR INVERTER	CONT	F	1.15	40	3300

F.L. EFF	91.7	3/4 LD EFF	92.2	1/2 LD EFF	91.5	GTD EFF	ELECT. TYPE
F.L. PF	79.8	3/4 LD PF	74.5	1/2 LD PF	63.0	91.0	SQ CAGE INV RATED

F.L. TORQUE	LR AMPS @ 460 V	L.R. TORQUE	B.D. TORQUE	F.L. RISE (° C)
89.0 LB-FT	145	180 LB-FT 202%	235 LB-FT 264%	65

SOUND PRESSURE	SOUND	ROTOR WK²	MAX. LOAD WK²	SAFE STALL TIME	STARTS/HOUR	APROX.
0 dBA	9 dBA	0.00 LB-FT²	0 LB-FT²	0 SEC.	2	0 LB.

*** SUPPLEMENTAL INFORMATION ***

DE BRACKET TYPE	ODE BRACKET TYPE	MOUNT TYPE	MOTOR ORIENTATION	SEVERE DUTY	HAZARDOUS LOCATION	DRIP COVER	SCREENS	PAINT
STANDARD	STANDARD	RIGID	HORIZONTAL	UM SEVERE	PROOF CL I GR CD CL II	NO	NONE	UE - RAL 5003 (EPOX)

BEARINGS	GREASE	SHAFT TYPE	SPECIAL DE	SPECIAL ODE	SHAFT MATERIAL	FRAME MATERIAL
DE BALL	ODE BALL	POLYREX EM	T	NONE	NONE	1045 HOT ROLLED (C-204) CAST IRON
6311	6210					

THERMOSTATS	PROTECTORS	WDG RTD's	BRG RTD's	THERMISTORS	CONTROL	SPACE HEATERS
TSTATS (N/C)	NOT	NONE	NONE	NONE	FALSE	NA

R1 (ohms/ph)	R2 (ohms/ph)	X1 (ohms/ph)	X2 (ohms/ph)	Xm (ohms/ph)	VIBRATION (in/sec)	FLOAT
0.313	0.183	0.937	1.461	21.409	0.080	ODE

* N O T E S *		INVERTER TORQUE: CONSTANT 10:1 INV. HP SPEED RANGE: NONE
		ENCODER: NONE NONE NONE NONE PPR

PREPARED BY: _____ DATE: 1/30/2023	BRAKE: NONE NONE NONE FT-LB: NA VOLTAGE: NONE HZ: UL: NO LETTER - ALL BRANDS-UL LISTED AND CSA CERTIFIED
---------------------------------------	--

FORM: 3531 REV_4 2/27/06