

PRODUCT INFORMATION PACKET



Model No: 286TTFNA17234
Catalog No: 286TTFNA17234
25,1800,TEFC,286TDV,3/60/460,2SPD,1WDG,VT

Regal and Marathon are trademarks of Regal Rexnord Corporation or one of its affiliated companies.
©2023 Regal Rexnord Corporation, All Rights Reserved. MC017097E



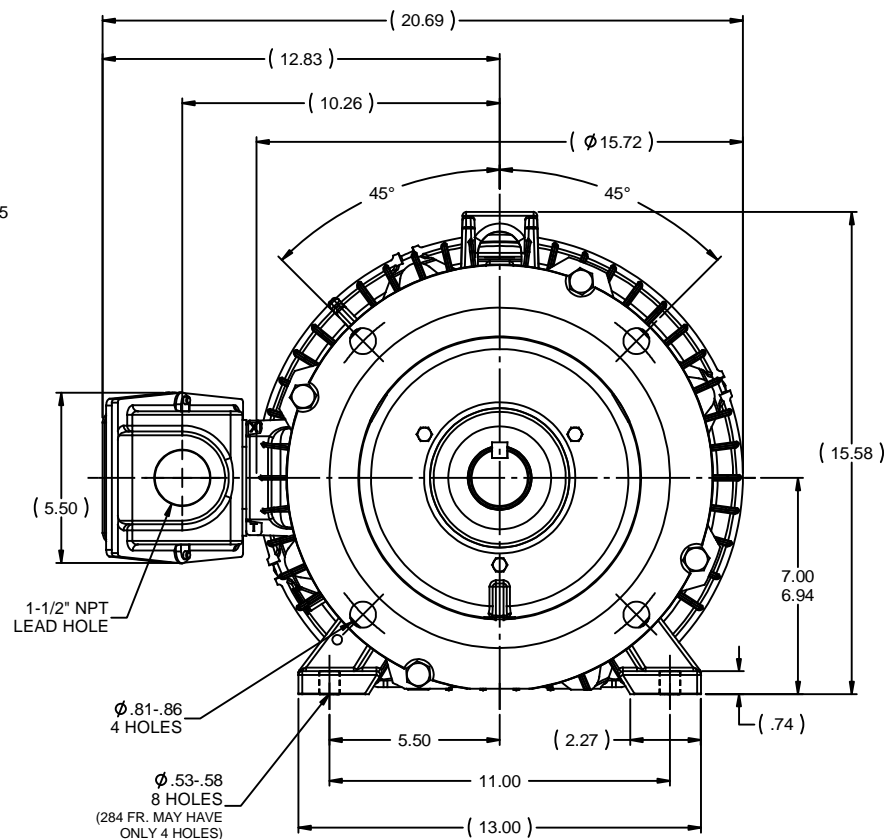
Nameplate Specifications

Phase	3	Output HP	25,6.25 Hp
Output KW	18.7 kW	Voltage	460 V
Speed	1775,880 rpm	Service Factor	1.15
Frame	286TDV	Enclosure	Totally Enclosed Fan Cooled
Thermal Protection	No Protection	Efficiency	91.7 %
Ambient Temperature	40 °C	Frequency	60 Hz
Current	31,11 A	Power Factor	83
Duty	Continuous	Insulation Class	F
Design Code	1VT	KVA Code	J
Drive End Bearing Size	311	Opp Drive End Bearing Size	210
UL	Recognized	CSA	Y
CE	Y	IP Code	56
Number of Speeds	2		



Technical Specifications

Electrical Type	Squirrel Cage Induction Run	Starting Method	Across The Line
Poles	4/8	Rotation	Reversible
Resistance Main	.365 Ohms	Mounting	Rigid Base
Motor Orientation	Shaft Down	Drive End Bearing	Ball
Opp Drive End Bearing	Ball	Frame Material	Cast Iron
Shaft Type	T	Assembly/Box Mounting	W6
Outline Drawing	B-SS312246-1275	Connection Drawing	A-EE7322

This is an uncontrolled document once printed or downloaded and is subject to change without notice. Date Created:08/24/2023



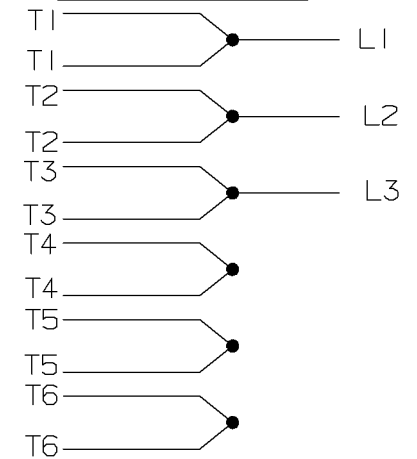
1. CONDUIT BOX CAN BE ROTATED IN 90° STEPS.
2. CONDUIT BOX CAN BE MOUNTED ON OPPOSITE SIDE BY REMOVING BRACKETS AND TURNING FRAME 180°
3. NAMEPLATES TO BE READ FROM CONDUIT BOX SIDE OF MOTOR.

				TOLERANCES UNLESS SPECIFIED				DRAWN TJW 4/13/2010	
		DEC		INCHES				CHK DD 4/13/2010	
		X		±.1				APPR MJS 4/13/2010	
		XX		±.03		TITLE OUTLINE - TFNA 280TD FR. - TEFC - 12.50 LAM		SCALE 1:4	
		XXX		±.005				REF SS311178	
		XXXX		±.0005		MATL		FMF MU94962	
NO		REVISION		BY & DATE		CHK ANG ±7°30"		FINISH	
		THIRD ANGLE PROJECTION				RFP 4/13/2010		PREV	
						NETWORK FILE NAME SS312246		SIZE B	
								DRAWING NO SS312246	
								REV	

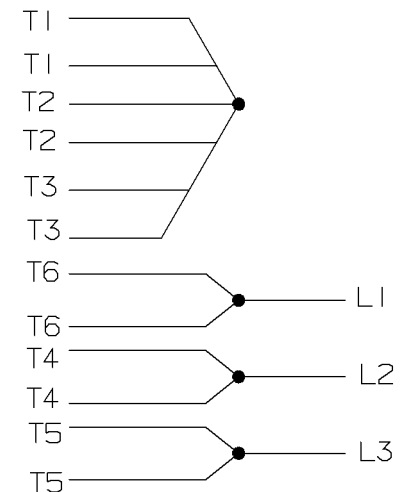
A- EE7322

FOR DUAL LEADS

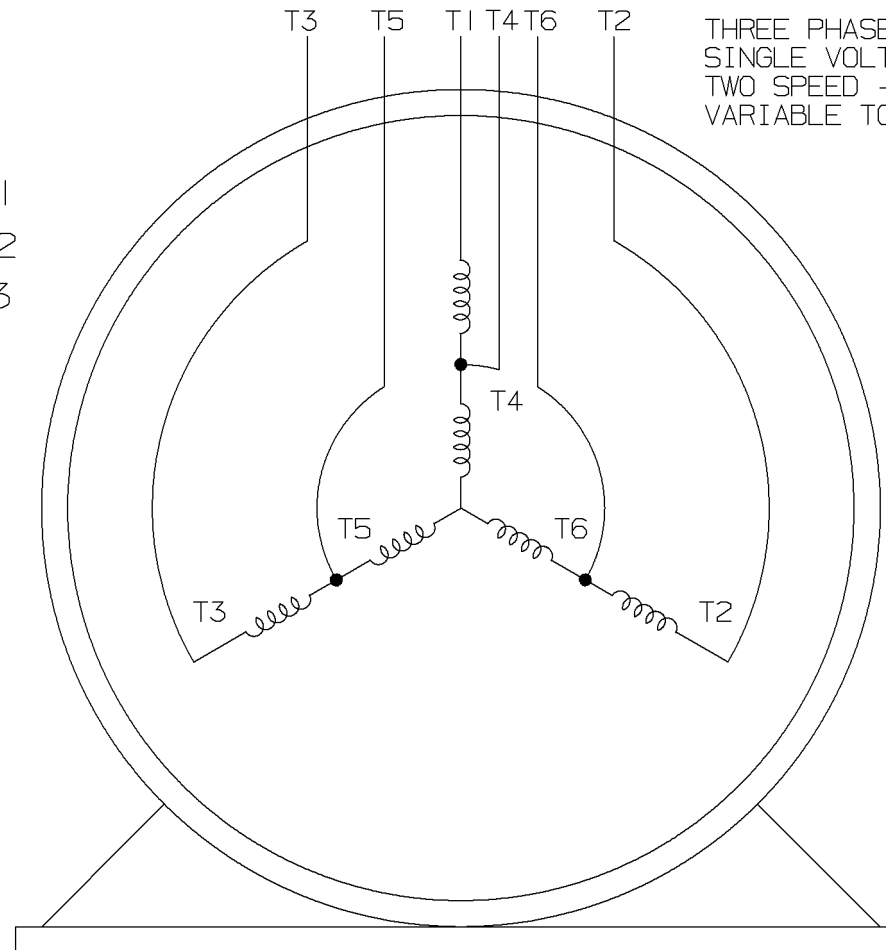
LOW SPEED



HIGH SPEED

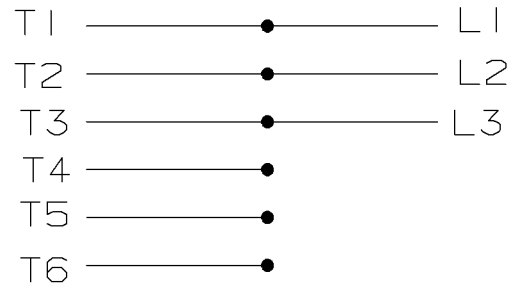


THREE PHASE MOTOR
SINGLE VOLTAGE
TWO SPEED - SGL. WDG.
VARIABLE TORQUE

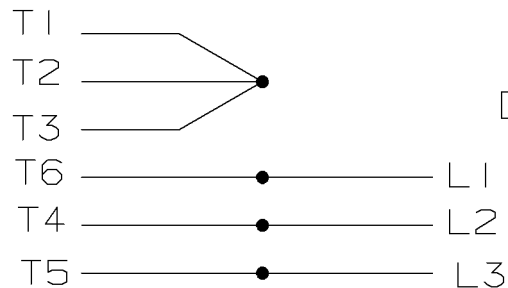


VIEW OF TERMINAL END

LOW SPEED




HIGH SPEED



T612C

T48B

				✓ MAX. SURFACE ROUGHNESS UNLESS NOTED OTHERWISE	UNLESS OTHERWISE SPECIFIED DIMENSIONS ARE IN INCHES TOL. ON XX± XXX± .005 XXXX± .0005 ANGLES±						
				MATL SPEC				DRAWN BY PGK	12-26-1996		
								CHKD BY ML	01-07-1997		
				FINISH							
7	01-08-1997	REDRAWN ON CADD		PGK	REFERENCE DRW.	WAUSAU, WISCONSIN 54401			APPD BY TB	01-07-1997	
		CN 24000-27									
REV	DATE	CHANGE	NAME	PART NAME CONNECTION DIAGRAM 3Ø - SINGLE VOLTAGE - 2 SPEED						DRWG NO A- EE7322	

SHOP BOOK

PURCHASED

DISTRIBUTION - WA - LB - WP - LM - BR

CADD FILE NO.

EE7322