

PRODUCT INFORMATION PACKET

marathon®
Motors

Model No: 286TTFNA16021

Catalog No: M900B

Vertical Pump Motor, 30 HP, 3 Ph, 60 Hz, 230/460 V, 3600 RPM, 286HPV Frame, TEFC



Regal and Marathon are trademarks of Regal Rexnord Corporation or one of its affiliated companies.
©2022 Regal Rexnord Corporation, All Rights Reserved. MC017097E

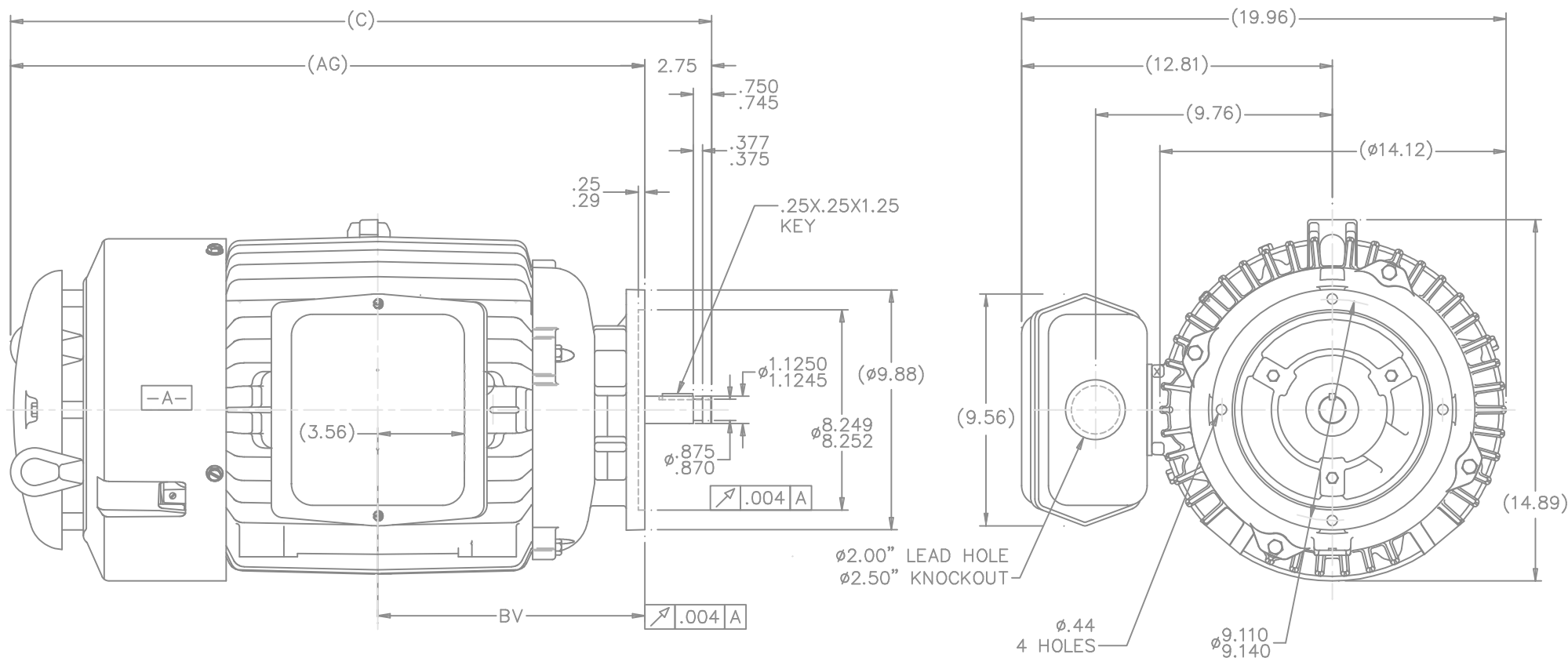
RegalRexnord

Nameplate Specifications

Output HP	30 Hp	Output KW	22.4 kW
Frequency	60 Hz	Voltage	230/460 V
Current	67.0/33.5 A	Speed	3555 rpm
Service Factor	1.15	Phase	3
Efficiency	93 %	Power Factor	89.5
Duty	Continuous	Insulation Class	F
Design Code	B	KVA Code	G
Frame	286HPV	Enclosure	Totally Enclosed Fan Cooled
Thermal Protection	No Protection	Ambient Temperature	40 °C
Drive End Bearing Size	6311	Opp Drive End Bearing Size	6210
UL	Recognized	CSA	Y
CE	Y	IP Code	43
Number of Speeds	1		

Technical Specifications


Electrical Type	Squirrel Cage Induction Run	Starting Method	Across The Line
Poles	2	Rotation	Reversible
Resistance Main	.3 Ohms	Mounting	Round
Motor Orientation	Shaft Down	Drive End Bearing	Ball
Opp Drive End Bearing	Ball	Frame Material	Cast Iron
Shaft Type	HP	Overall Length	27.38 in
Frame Length	14.25 in	Shaft Diameter	1.125 in
Shaft Extension	2.75 in	Assembly/Box Mounting	F1/F2 CAPABLE
Outline Drawing	B-SS311024-1425	Connection Drawing	A-EE7308



NOTES:

1. BOX CAN ONLY BE ROTATED CLOCKWISE UP TO 270° FROM ITS ORIGINAL POSITION.
2. NAMEPLATE TO BE READ FROM CONDUIT BOX SIDE OF MOTOR.

DASH	FRAME	AG	C	BV
1275	284/6HP	26.13	28.88	11.00
1425	284/6HP	27.63	27.38	12.50

							TOLERANCES UNLESS SPECIFIED			DRAWN CAV 04-17-2000				
							DEC.	INCHES		CHK	ML	05-03-2000		
							.X	±.1		APPD	GK	05-03-2000		
3	CHANGED TOLERANCE FROM .007 TO .004	CN 31741	BJK 07-18-2002	DRS	.XX	±.03	TITLE OUTLINE - TEFC				SCALE	1=4		
2	CORRECTED C'BOX HOLOE NOTE	CN 29200-1454	HLB 02-16-2001		.XXX	±.005	280HP FR. - BB - P'BASE - 11.00 LAM				RFM			
1	NEW DRAWING	MU23810	CAV 05-03-2000		.XXXX	±.0005	MAT'L				REF			
NO.	REVISION		BY & DATE		CHK	ANG	±730"		FINISH		PREV			
THIS DRAWING IN DESIGN AND DETAIL IS OUR PROPERTY AND MUST NOT BE USED EXCEPT IN CONNECTION WITH OUR WORK. ALL RIGHTS OF DESIGN AND INVENTION ARE RESERVED. THIS IS AN ELECTRONICALLY GENERATED DOCUMENT - DO NOT SCALE THIS PRINT										RFP	CAD FILE ss311024			
					DIST	LB			SIZE	DRAWING NO.	PAGE	OF	REV.	
									B	SS311024			3	



NO.	REVISION	BY & DATE	CHK	ANG	TOLERANCES UNLESS SPECIFIED		DRAWN RM	11/20/1990
					DEC.	INCHES		
5	CHG TO REGAL LOGO	SL 09/10/2015	AB				CHK	ML 11/21/1990
4	REVISED IEC NOTATIONS	MSG 11/15/2011	CMN	.X	±.1		APPD	SAS 04/24/2003
3	ADDED IEC NOTATIONS... (U1), (V1) ETC. MU95194	MSG 5/10/2010	MJS	.XX	±.02		SCALE	1=1
2	ADDED THE OPTIONAL CORD CONNECTION MU46318	RDH 04/24/2003	DRS	.XXX	±.005		REF	
1	REDRAWN	RM 11/20/1990		.XXXX	±.0005		FINISH	PREV
THIS DRAWING IN DESIGN AND DETAIL IS OUR PROPERTY AND MUST NOT BE USED EXCEPT IN CONNECTION WITH OUR WORK ALL RIGHTS OF DESIGN AND INVENTION ARE RESERVED THIS IS AN ELECTRONICALLY GENERATED DOCUMENT – DO NOT SCALE THIS PRINT					RFP	CAD FILE ee7308	SIZE A	DRAWING NO. EE7308
					DIST WP			PAGE 5



Regal Beloit America, Inc.

TITLE CONNECTION DIAGRAM
3Ø – DUAL VOLTAGE MOTOR



P.O. BOX 8003
WAUSAU, WI 54401-8003
PH. 715-675-3311

DATA VOLTS: 460

CERTIFICATION DATA SHEET

CUSTOMER: _____ CUSTOMER P.O. #: _____
ORDER #: _____ REFERENCE MODEL #: 286TTFNA16021
CONN. DIAGRAM: A-EE7308 CAT #: M900B
OUTLINE: B-SS311024-1425 CUSTOMER PART #: _____
WINDING: K2862155 NONE 3 MOUNTING: F1/F2 CAPABLE
SPEED: _____

TYPICAL MOTOR PERFORMANCE DATA

HP	KW	SYNC RPM	FL RPM	FRAME	ENCLOSURE	TYPE	KVA CODE	DESIGN
30	22.4	3600	3555	286HPV	TEFC	TFN	G	B

PH	HZ	VOLTS	AMPS	START TYPE	DUTY	INSL	S.F.	AMB	ELEV.
3	60	230/460	67/33.5	ACROSS THE LINE	CONT	F	1.15	40	3300

F.L. EFF	93.0	3/4 LD EFF	93.6	1/2 LD EFF	93.0	GTD EFF	92.4	ELECT. TYPE	SQ CAGE IND RUN
F.L. PF	89.5	3/4 LD PF	87.0	1/2 LD PF	81.0				

F.L. TORQUE	LR AMPS @ 460 V	L.R. TORQUE	B.D. TORQUE	F.L. RISE (°C)
44.5 LB-FT	217	63.0 LB-FT 142%	123 LB-FT 276%	65

@ 3 FT.	POWER	ROTOR WK²	MAX. LOAD WK²	SAFE STALL TIME	STARTS/HOUR	MOTOR WGT
72 dBA	81 dBA	2.70 LB-FT²	35 LB-FT²	20 SEC.	2	450 LB.

*** SUPPLEMENTAL INFORMATION ***

DE BRACKET TYPE	ODE BRACKET TYPE	MOUNT TYPE	MOTOR ORIENTATION	SEVERE DUTY	HAZARDOUS LOCATION	DRIP COVER	SCREENS	PAINT
P-BASE	STANDARD	ROUND	SHAFT DOWN	NO	NONE	YES	NONE	BLUE (ENAMEL)

BEARINGS		GREASE	SHAFT TYPE	SPECIAL DE	SPECIAL ODE	SHAFT MATERIAL	FRAME MATERIAL
DE	ODE						
BALL	BALL	POLYREX EM	HP	NONE	NONE	1045 HOT ROLLED (C-204)	CAST IRON
6311	6210						

THERMOSTATS	PROTECTORS	WDG RTD's	BRG RTD's	THERMISTORS	CONTROL	SPACE HEATERS
NONE	NOT	NONE	NONE	NONE	FALSE	NA

R1 (ohms/ph)	R2 (ohms/ph)	X1 (ohms/ph)	X2 (ohms/ph)	Xm (ohms/ph)	VIBRATION (in/sec)	FLOAT
0.197	0.104	0.794	0.605	2778.3	0.150	ODE

* N O T E S *		INVERTER TORQUE: NONE INV. HP SPEED RANGE: NONE
	ENCODER: NONE NONE NONE	NONE PPR

PREPARED BY: FAREEDA DUDEKULA DATE: 9/11/2018	BRAKE: NONE NONE NONE	NONE
	FT-LB: NA VOLTAGE: NONE	HZ:
FORM: 3531 REV_4 2/27/06	UL: V-INS, CONST UL REC	

Data Sheet

Date: 11/30/2018

Customer: _____

Attention: _____

Submitted by: FAREEDA DUDEKULA



286TTFNA16021

Submittal

Data @ 460 V

Motor Load Data

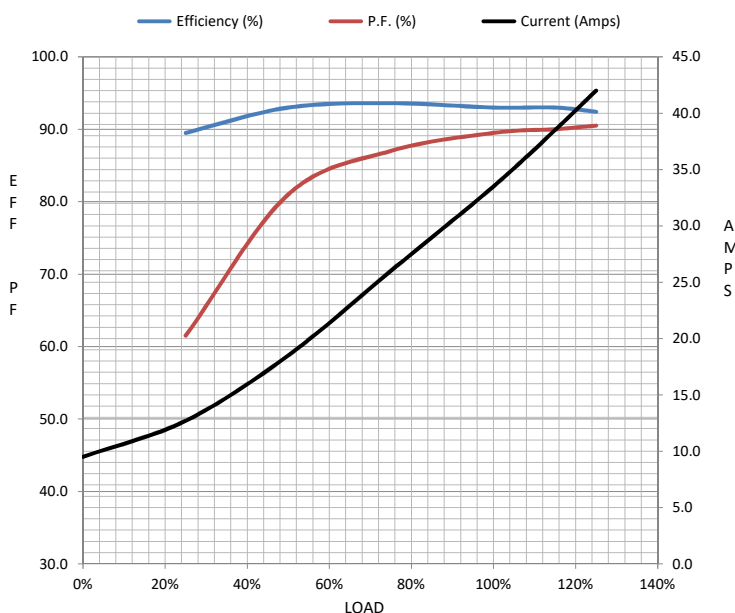
Load	0%	25%	50%	75%	100%	115%	125%	LR	
Current (Amps)	9.5	12.7	18.5	26.0	33.5	38.5	42.0	217	
Torque (ft-lb)	0.00	11.0	22.0	33.0	44.5	51.0	56.0	63.0	
RPM	3600	3590	3578	3565	3555	3547	3542	0	
Efficiency (%)		89.5	93.0	93.6	93.0	93.0	92.4		
P.F. (%)	6.5	61.5	81.0	87.0	89.5	90.0	90.5	32.0	

Motor Speed Data

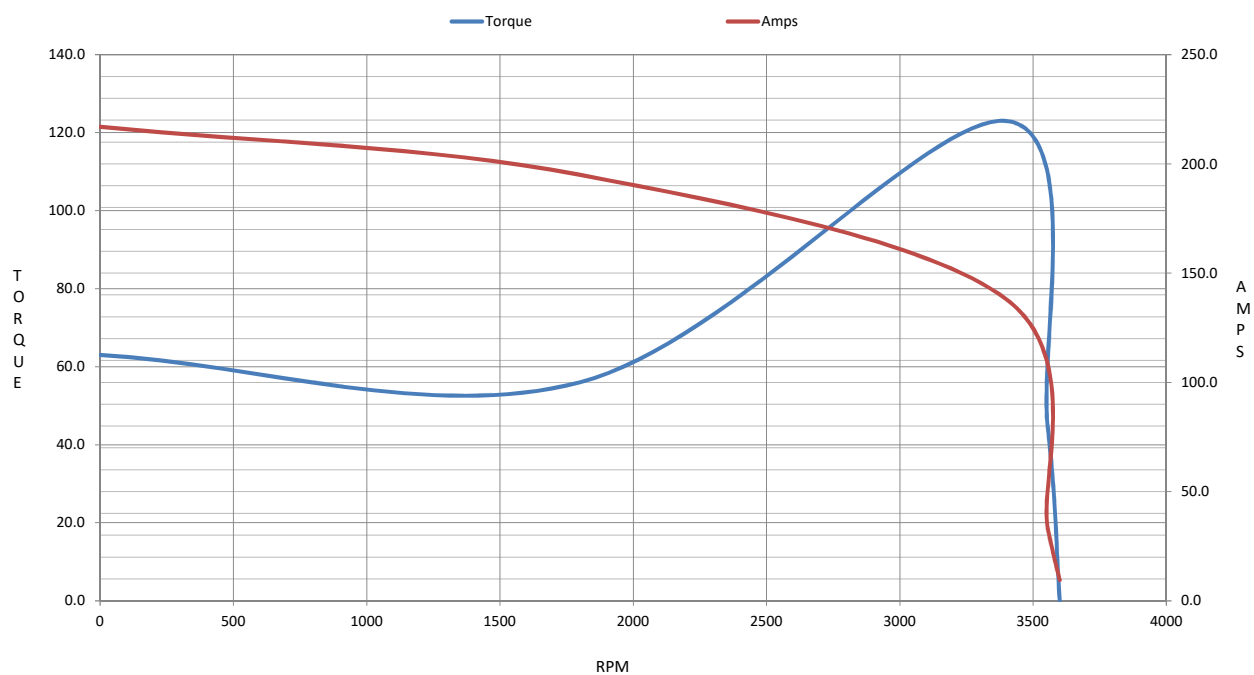
	LR	Pull-Up	BD	Rated	Idle
Speed (RPM)	0	1800	3400	3555	3600
Current (Amps)	217	195	138	33.5	9.5
Torque (ft-lb)	63.0	56.0	123	44.5	0.00

Information Block

HP	30.0			
Sync. RPM	3600			
Frame	286			
Enclosure	TEFC			
Construction	TFS			
Voltage	230/460	V		
Frequency	60	Hz		
Design	A			
LR Code letter	G			
Service Factor	1.15			
Temp Rise @ FL	65	° C		
Duty	CONT			
Ambient	40	° C		
Elevation	1,000	feet		
Rotor/Shaft wk²	2.70	Lb-Ft²		
Ref Wdg	K2862155 NONE			
Sound Pressure @ 1M	72	dBA		
VFD Rating	NONE			
Outline Dwg	B-SS311024-1425			
Conn. Diag	A-EE7308			
Additional Specifications:				
0				
0				
EQUIV CKT (OHMS / PHASE)				
R1	R2	X1	X2	Xm
0.1970	0.1040	0.7940	0.6050	#####



Speed -Torque Curve



EC Declaration of Conformity

The undersigned representing
the manufacturer:

Regal Beloit America
100 East Randolph St.
Wausau, WI 54401

and the authorized representative
established within the Community:

Marathon Electric UK
6F Thistleton Road Ind. Estate
Market Overton
Oakham, Rutland LE15 7PP UK

are committed to providing customers with products that comply with applicable regulations and international protocols to which they are subject, including the requirements of the European Parliament Directive on the Harmonization of the laws relating to electrical equipment designed for use within certain voltage limits (2014/35/EU).

Regal Beloit America declares that the following product(s), to which this declaration relates, are in conformity with the relevant sections of the EC standards listed below.

This statement supersedes any statements previously issued pertaining to the product(s) listed below and is subject to change without notice.

Model No : 286TTFNA16021

(Model No. may contain prefix and/or suffix characters)

Catalog No : M900B

Rework No : N/A

Directives :

Low Voltage Directive 2014/35/EU

Harmonized Standards Used :

EN 60034-1: 2010 (IEC 60034-1: 2010)

EN 60034-5: 2001/A1:2007 (IEC 60034-5: 2000/A1:2006)

Authorized Representative:



Michael A. Logsdon
Vice President, Technology

Authorized Representative in the Community:



Julian Clark
Marketing Engineer

Created on 09/01/2022

CE 22