

# PRODUCT INFORMATION PACKET

**marathon®**  
Motors

Model No: 286TTFNA14085

Catalog No: M894A

20 HP Vertical Solid Shaft P-Base Motor, 3 phase, 1200 RPM, 230/460 V, 286HPV Frame, TEFC  
Vertical Pump Motors



Regal and Marathon are trademarks of Regal Rexnord Corporation or one of its affiliated companies.  
©2021 Regal Rexnord Corporation, All Rights Reserved. MC017097E

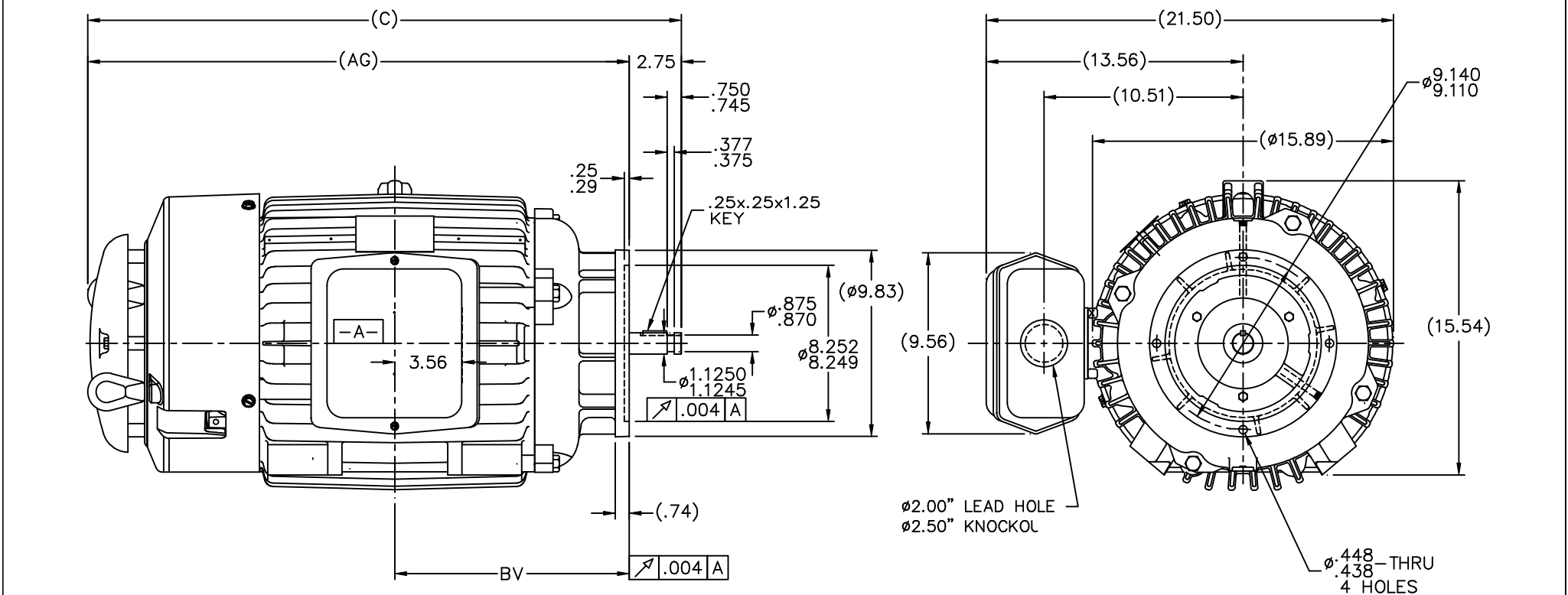
**RegalRexnord**

### Nameplate Specifications

Output HP	20 Hp	Output KW	14.9 kW
Frequency	60 Hz	Voltage	230/460 V
Current	54.0/27.0 A	Speed	1170 rpm
Service Factor	1.15	Phase	3
Efficiency	90.2 %	Power Factor	78.4
Duty	Continuous	Insulation Class	F
Design Code	B	KVA Code	G
Frame	286HPV	Enclosure	Totally Enclosed Fan Cooled
Thermal Protection	No	Ambient Temperature	40 °C
Drive End Bearing Size	6311	Opp Drive End Bearing Size	6210
UL	Recognized	CSA	Y
CE	Y	IP Code	43
Number of Speeds	1		


### Technical Specifications

Electrical Type	Squirrel Cage Induction Run	Starting Method	Across The Line
Poles	6	Rotation	Reversible
Resistance Main	.435 Ohms	Mounting	Round
Motor Orientation	Shaft Down	Drive End Bearing	Ball
Opp Drive End Bearing	Ball	Frame Material	Cast Iron
Shaft Type	HP	Overall Length	30.84 in
Frame Length	14.25 in	Shaft Diameter	1.875 in
Shaft Extension	2.75 in	Assembly/Box Mounting	F1/F2 CAPABLE
Outline Drawing	B-SS311022-1425	Connection Drawing	A-EE7308



NOTES:

1. BOX CAN ONLY BE ROTATED CLOCKWISE UP TO 270° FROM ITS ORIGINAL POSITION.
2. NAMEPLATE TO BE READ FROM CONDUIT BOX SIDE OF MOTOR.

											TOLERANCES UNLESS SPECIFIED				DRAWN DRS 03-30-2000	
											DEC. INCHES				CHK ML 04-06-2000	
											.X ±.1				APPD GK 04-06-2000	
							3 REDRAW ON AUTOCAD		HLB 09-07-2004		ML .XX ±.03		TITLE OUTLINE - TEFC - TGN 280HP FR. - BB - STD - 12.50 LAM		SCALE 1=5	
							2 CORRECTED C'BOX HOLE NOTE CN 29200-1454		HLB 02-16-2001		.XXX ±.005				REF	
							1 NEW DRAWING MU25722		DRS 04-06-2000		.XXXX ±.0005		MAT'L		FMF	
							NO. REVISION		BY & DATE		CHK ANG ±7°30"		FINISH		PREV	
							THIS DRAWING IN DESIGN AND DETAIL IS OUR PROPERTY AND MUST NOT BE USED EXCEPT IN CONNECTION WITH OUR WORK ALL RIGHTS OF DESIGN AND INVENTION ARE RESERVED THIS IS AN ELECTRONICALLY GENERATED DOCUMENT - DO NOT SCALE THIS PRINT				RFP		CAD FILE ss311022		SIZE B DRAWING NO. PAGE OF REV. SS311022 3	
DASH	FRAME		AG	C		BV										
1425	284/286HP		28.09	30.84		12.13										
1475	284/286HP		28.59	31.34		12.38										



				TOLERANCES UNLESS SPECIFIED		 <b>Regal</b> Beloit America, Inc.	DRAWN RM	11/20/1990
5	CHG TO REGAL LOGO	SL 09/10/2015	AB	DEC.	INCHES		CHK ML	11/21/1990
4	REVISED IEC NOTATIONS	MSG 11/15/2011	CMN	.X	±.1		APPD SAS	04/24/2003
3	ADDED IEC NOTATIONS... (U1), (V1) ETC. MU95194	MSG 5/10/2010	MJS	.XX	±.02		SCALE	1=1
2	ADDED THE OPTIONAL CORD CONNECTION MU46318	RDH 04/24/2003	DRS	.XXX	±.005	TITLE CONNECTION DIAGRAM 3ø – DUAL VOLTAGE MOTOR		REF
1	REDRAWN	RM 11/20/1990		.XXXX	±.0005	MAT'L.		FMF
NO.	REVISION	BY & DATE	CHK	ANG	±7"30"	FINISH		PREV
THIS DRAWING IN DESIGN AND DETAIL IS OUR PROPERTY AND MUST NOT BE USED EXCEPT IN CONNECTION WITH OUR WORK ALL RIGHTS OF DESIGN AND INVENTION ARE RESERVED THIS IS AN ELECTRONICALLY GENERATED DOCUMENT – DO NOT SCALE THIS PRINT			RFP		CAD FILE ee7308		SIZE	DRAWING NO. PAGE OF REV.
			DIST WP				A	EE7308

THIS DRAWING IN DESIGN AND DETAIL IS OUR PROPERTY AND MUST NOT BE USED EXCEPT  
IN CONNECTION WITH OUR WORK ALL RIGHTS OF DESIGN AND INVENTION ARE RESERVED  
THIS IS AN ELECTRONICALLY GENERATED DOCUMENT - DO NOT SCALE THIS PRINT