

PRODUCT INFORMATION PACKET

marathon®
Motors

Model No: 286TTFCA6030

Catalog No: GT1131

30 HP General Purpose Motor, 3 phase, 1800 RPM, 575 V, 286T Frame, TEFC
General Purpose Motors



Regal and Marathon are trademarks of Regal Rexnord Corporation or one of its affiliated companies.
©2021 Regal Rexnord Corporation, All Rights Reserved. MC017097E

RegalRexnord

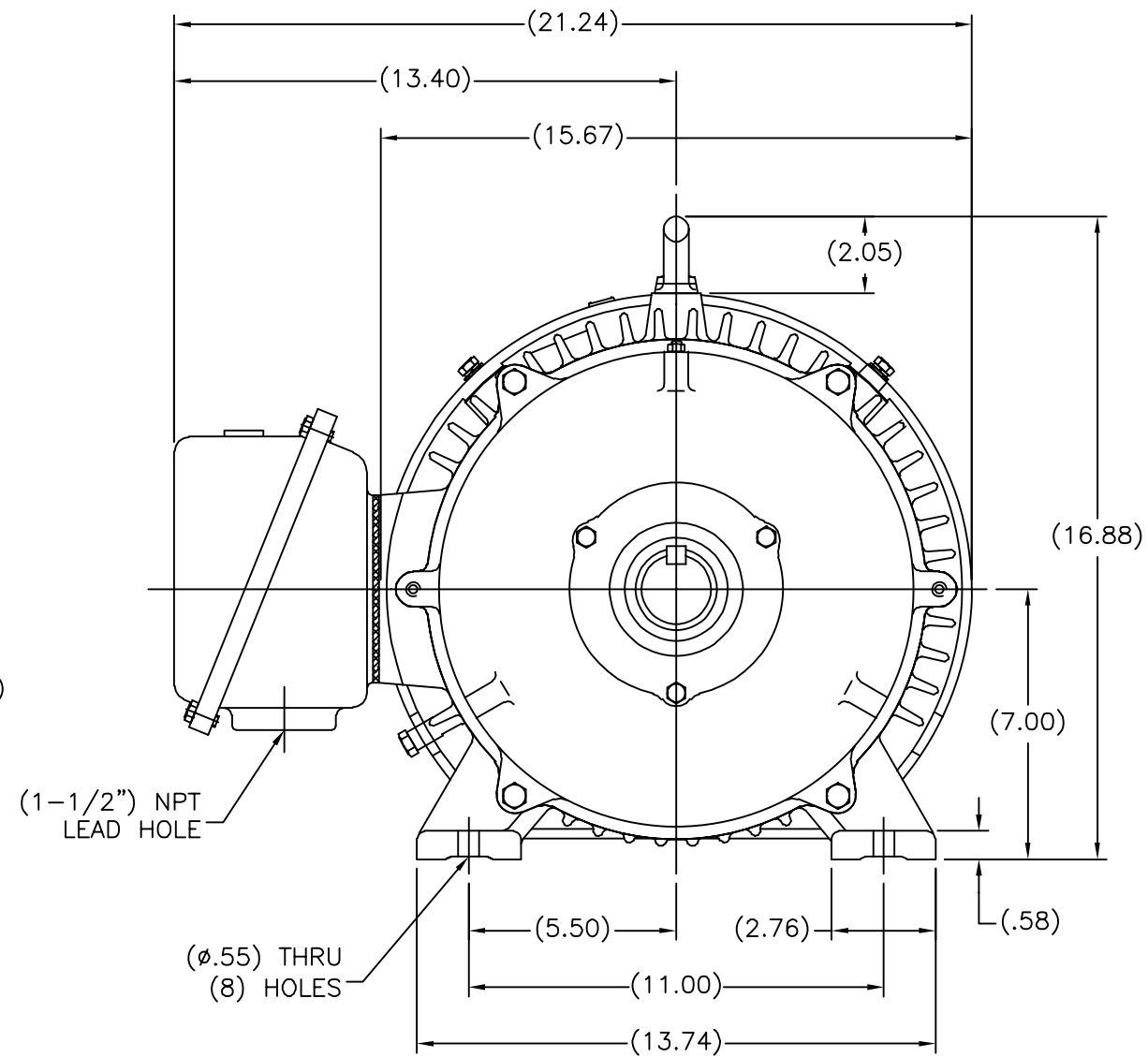
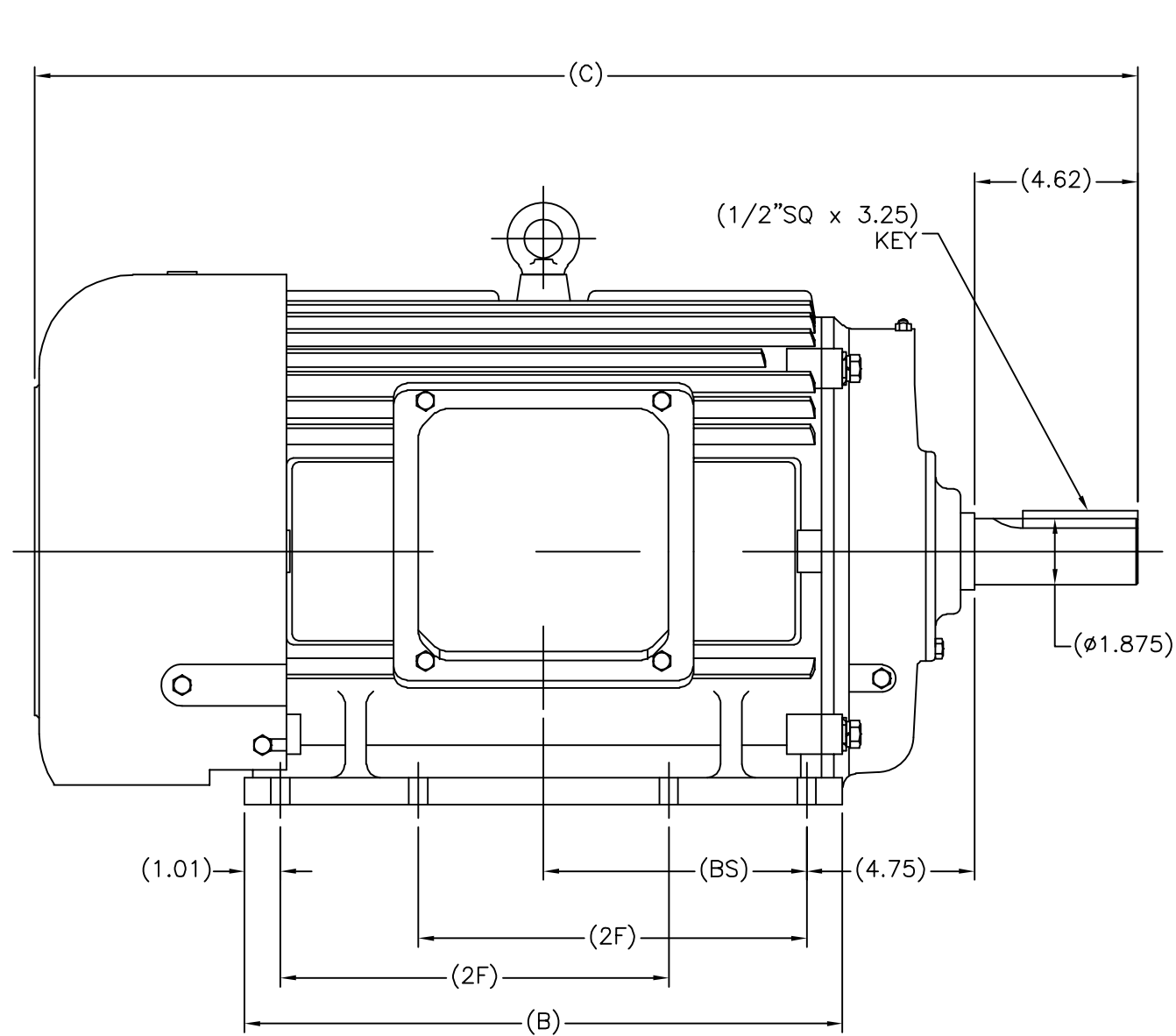
Nameplate Specifications

Output HP	30 Hp	Output KW	22.4 kW
Frequency	60 Hz	Voltage	575 V
Current	29.2 A	Speed	1780 rpm
Service Factor	1.15	Phase	3
Efficiency	94.1 %	Power Factor	81.5
Duty	Continuous	Insulation Class	F
Design Code	B	KVA Code	G
Frame	286T	Enclosure	Totally Enclosed Fan Cooled
Thermal Protection	No	Ambient Temperature	40 °C
Drive End Bearing Size	6311	Opp Drive End Bearing Size	6210
UL	Recognized	CSA	Y
CE	Y	IP Code	43
Number of Speeds	1		

Technical Specifications

Electrical Type	Squirrel Cage Induction Run	Starting Method	Across The Line
Poles	4	Rotation	Reversible
Resistance Main	.215 Ohms	Mounting	Rigid Base
Motor Orientation	Horizontal	Drive End Bearing	Ball
Opp Drive End Bearing	Ball	Frame Material	Cast Iron
Shaft Type	T	Overall Length	31.34 in
Shaft Diameter	1.875 in	Shaft Extension	4.62 in
Assembly/Box Mounting	F1/F2 CAPABLE		
Outline Drawing	SS620245-286T	Connection Drawing	A-EE7300


SS620245



(MAY NOT BE DRAWN TO SCALE)

(DIMENSIONS IN TABLE ARE CONSIDERED REFERENCE)

284T	30.16	15.75	9.50	6.86
286T	31.34	16.93	11.00	7.45
FRAME	C	B	2F	BS

				TOLERANCES UNLESS SPECIFIED		 REGAL-BELOIT CORPORATION		DRAWN MSG 01-12-2010					
				DEC.	INCHES			CHK	MJS 01-13-2010				
				.X	±.1			APPD	SB 01-13-2010				
				.XX	±.03	TITLE OUTLINE 280T FR. — TEFC		SCALE	1=4				
				.XXX	±.005			REF					
1	ADDED 'BS' DIM. UPDATED TITLE BLOCK ECO-0048910		RFH 04/07/2014	EH	.XXXX	±.0005	MAT'L.	FMF					
NO.	REVISION		BY & DATE	CHK	ANG	±7'30"	FINISH	PREV					
THIS DRAWING IN DESIGN AND DETAIL IS OUR PROPERTY AND MUST NOT BE USED EXCEPT IN CONNECTION WITH OUR WORK ALL RIGHTS OF DESIGN AND INVENTION ARE RESERVED THIS IS AN ELECTRONICALLY GENERATED DOCUMENT — DO NOT SCALE THIS PRINT				RFP	01-14-2010		CAD FILE	SS620245	SIZE	DRAWING NO.	PAGE	OF	REV.
				DIST				B	SS620245		1		

THIS DRAWING IN DESIGN AND DETAIL IS OUR PROPERTY AND MUST NOT BE USED EXCEPT IN CONNECTION WITH OUR WORK ALL RIGHTS OF DESIGN AND INVENTION ARE RESERVED THIS IS AN ELECTRONICALLY GENERATED DOCUMENT - DO NOT SCALE THIS PRINT

THREE PHASE - SINGLE VOLTAGE MOTOR - CONDUIT BOX @ 'A'

TO REVERSE ROTATION:
INTERCHANGE ANY TWO
LINE LEAD CONNECTIONS.

TERMINAL BLOCK WHEN SPECIFIED



IF MOTOR HAS 6 LEADS



A-9806 DECAL

OPTIONAL CORD CONNECTION



VIEW OF TERMINAL END

DRAWING REVISION AB	REVISION BY JJB	DATE 06-27-2017
ECO ECO-0125361	APPROVED BY TB	DATE 06-27-2017
ECO DESCRIPTION UPDATED TO CURRENT STANDARDS		
<small>COPYRIGHT REGAL BELOIT AMERICA, INC. ALL RIGHTS RESERVED. PROPRIETARY AND CONFIDENTIAL INFORMATION - THIS DOCUMENT IS THE PROPERTY OF REGAL BELOIT AMERICA, INC. ("OWNER") AND CONTAINS OWNER'S PROPRIETARY INFORMATION. ANY PERSON, CORPORATION OR OTHER FIRM RECEIVING IT IS DEEMED, BY RECEIVING IT, TO AGREE THAT IT, AND/OR ANY PART OF IT, SHALL NOT BE DISCLOSED TO ANY PERSON, CORPORATION OR OTHER ENTITY, DUPLICATED, AND/OR USED, EXCEPT AS EXPRESSLY APPROVED IN WRITING IN ADVANCE BY OWNER. THIS DOCUMENT SHALL BE RETURNED TO OWNER UPON REQUEST. IT MAY BE SUBJECT TO CERTAIN RESTRICTIONS UNDER APPLICABLE EXPORT CONTROL LAWS AND REGULATIONS.</small>		

DRAWN BY DA
DATE 03-26-1993
APPROVED BY TB
DATE 03-26-1993
REFERENCE
THIRD ANGLE PROJECTION



Regal Beloit America, Inc.

DESCRIPTION
CONNECTION DIAGRAM
EXTERNAL - SINGLE VOLTAGE - 3Ø MOTOR

MATERIAL PROCESS/FINISH

SIZE A	DRAWING NUMBER EE7300	SHEET 1 OF 1
-----------	--------------------------	-----------------

CERTIFICATION DATA SHEET

Model#: 286TTFCA6030 AA

WINDING#: CHT28640003 NONE 3

CONN. DIAGRAM: A-EE7300

ASSEMBLY: F1/F2 CAPABLE

OUTLINE: B-SS620245

TYPICAL MOTOR PERFORMANCE DATA

HP	KW	SYNC. RPM	F.L. RPM	FRAME	ENCLOSURE	KVA CODE	DESIGN
30	22.4	1800	1780	286T	TEFC	G	B

PH	Hz	VOLTS	FL AMPS	START TYPE	DUTY	INSL	S.F	AMB°C	ELEVATION
3	60	575	29.2	ACROSS THE LINE	CONTINUOUS	F7	1.15/1.15	40	3300

FULL LOAD EFF: 94.1	3/4 LOAD EFF: 93.6	1/2 LOAD EFF: 93	GTD. EFF	ELEC. TYPE	NO LOAD AMPS
FULL LOAD PF: 81.5	3/4 LOAD PF: 77	1/2 LOAD PF: 68	93	SQ CAGE IND RUN	11.4

F.L. TORQUE	LOCKED ROTOR AMPS	L.R. TORQUE	B.D. TORQUE	F.L. RISE°C
88.5 LB-FT	172	170 LB-FT 192	212 LB-FT 240	60

SOUND PRESSURE @ 3 FT.	SOUND POWER	ROTOR WK^2	MAX. WK^2	SAFE STALL TIME	STARTS /HOUR	APPROX. MOTOR WGT
68 dBA	78 dBA	5.7 LB-FT^2	225 LB-FT^2	20 SEC.	2	600 LBS.

*** SUPPLEMENTAL INFORMATION ***

DE BRACKET TYPE	ODE BRACKET TYPE	MOUNT TYPE	ORIENTATION	SEVERE DUTY	HAZARDOUS LOCATION	DRIP COVER	SCREENS	PAINT
STANDARD	STANDARD	RIGID	HORIZONTAL	FALSE	NONE	FALSE	NONE	BLUE (ENAMEL)

BEARINGS		GREASE	SHAFT TYPE	SPECIAL DE	SPECIAL ODE	SHAFT MATERIAL	FRAME MATERIAL
DE	OPE						
BALL	BALL						
6311	6210	POLYREX EM	T	NONE	NONE	1045 HOT ROLLED (C-204)	CAST IRON

THERMO-PROTECTORS				THERMISTORS	CONTROL	SPACE /n HEATERS
THERMOSTATS	PROTECTORS	WDG RTDs	BRG RTDs			
NONE	NOT	NONE	NONE	NONE	FALSE	NONE VOLTS

If Inverter equals NONE, contact factory for further information

INVERTER TORQUE: NONE
INV. HP SPEED RANGE: NONE
ENCODER: NONE
NONE NONE
NONE NONE PPR
BRAKE: NONE NONE
NONE P/N NONE
NONE NONE
NONE FT-LB NONE V NONE Hz

*
N
O
T
E
S
*

DATE: 06/27/2017 03:49:15 AM

FORM 3531 REV.3 02/07/99

** Subject to change without notice.

Data Sheet

Date: 6/19/2017

Customer: _____

Attention: _____

Submitted by: FAREEDA DUDEKULA



286TTFCA6030

Submittal

Data @ 575 V

Motor Load Data

Load	0%	25%	50%	75%	100%	115%	125%	LR	
Current (Amps)	11.4	13.4	17.6	22.8	29.2	33.6	36.0	172	
Torque (ft-lb)	0.00	22.0	44.0	66.5	88.5	102	112	170	
RPM	1800	1795	1790	1782	1775	1,772	1770	0	
Efficiency (%)		91.0	93.0	93.6	93.6	93.6	93.0		
P.F. (%)	4.5	45.0	68.0	77.0	82.0	82.5	83.0	38.0	

Motor Speed Data

	LR	Pull-Up	BD	Rated	Idle	Information Block					
Speed (RPM)	0	1100	1675	1775	1800	HP		30.0			
Current (Amps)	172	148	100	29.2	11.4	Sync. RPM		1800			
Torque (ft-lb)	170	160	212	88.5	0.00	Frame		286			
<div><div>Efficiency (%)</div><div>P.F. (%)</div><div>Current (Amps)</div><p>EFFICIENCY (%)</p><p>P.F. (%)</p><p>CURRENT (AMPS)</p></div>	Enclosure		TEFC								
	Construction		TFC								
	Voltage		575 V								
	Frequency		60 Hz								
	Design		B								
	LR Code letter		G								
	Service Factor		1.15								
	Temp Rise @ FL		60 ° C								
	Duty		CONT								
	Ambient		40 ° C								
	Elevation		1,000 feet								
	Rotor/Shaft wk ²		5.7 Lb-Ft ²								
	Ref Wdg		CHT28640003 NONE								
	Sound Pressure @ 1M		68 dBA								
	VFD Rating		NONE								
	Outline Dwg		B-SS620245								
	Conn. Diag		A-EE7300								
Additional Specifications:											
0											
0											
EQUIV CKT (OHMS / PHASE)											
R1		R2		X1		X2		Xm			
0.2360		0.1620		0.8490		1.6090		29.0880			

Speed -Torque Curve

