

# PRODUCT INFORMATION PACKET

Model No: 286TTDP7689

Catalog No: Y216

Multispeed Motor, 20 HP, 3 Ph, 60 Hz, 230/460/796 V, 1200 RPM, 286T Frame, DP



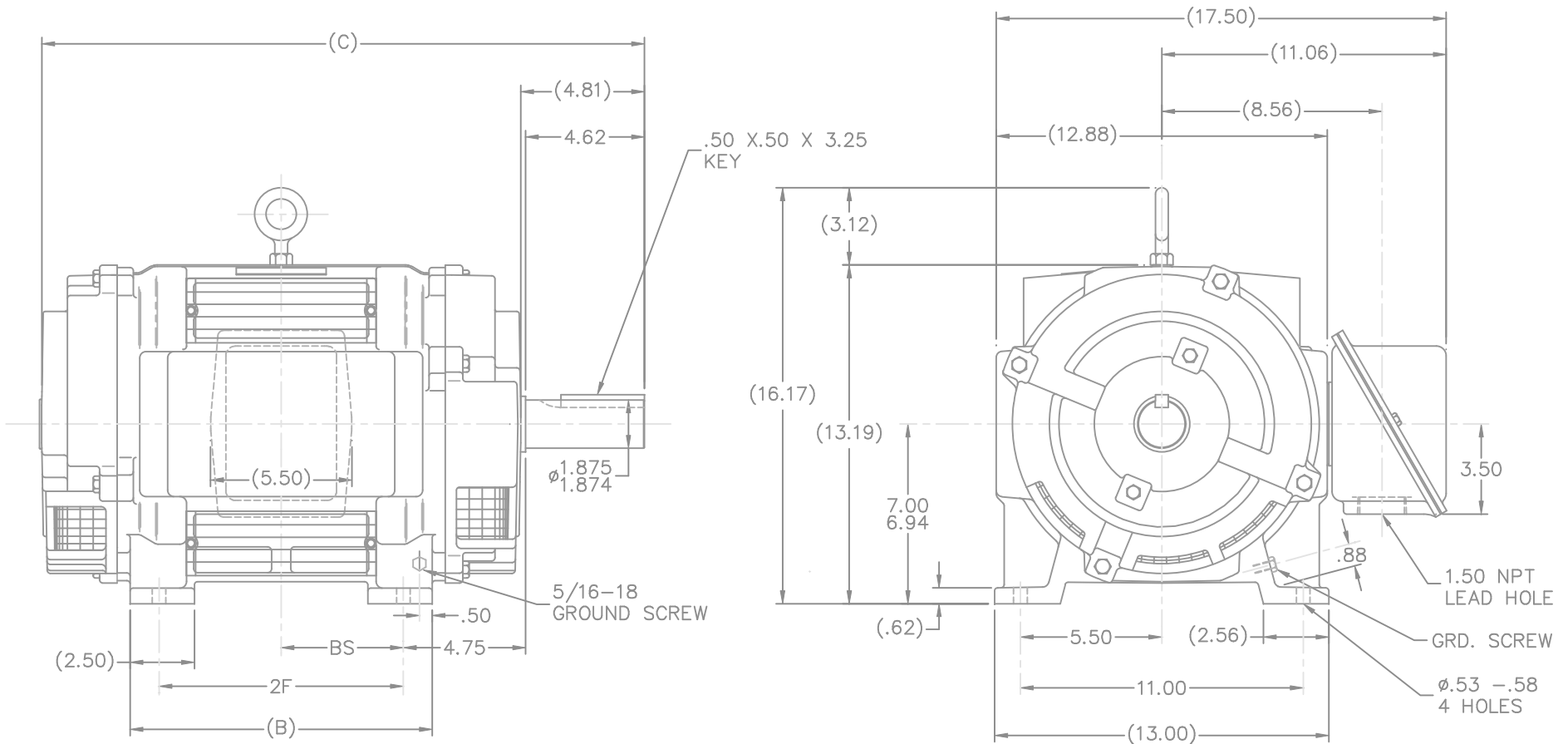
Regal and Marathon are trademarks of Regal Rexnord Corporation or one of its affiliated companies.  
©2024 Regal Rexnord Corporation, All Rights Reserved. MC017097E

### Nameplate Specifications

Phase	<b>3</b>	Output HP	<b>20 Hp</b>
Output KW	<b>14.9 kW</b>	Voltage	<b>230/460/796 V</b>
Speed	<b>1130 rpm</b>	Service Factor	<b>1.15</b>
Frame	<b>286T</b>	Enclosure	<b>Drip Proof</b>
Thermal Protection	<b>No Protection</b>	Efficiency	<b>87.5 %</b>
Ambient Temperature	<b>40 °C</b>	Frequency	<b>60 Hz</b>
Current	<b>53.0/26.5/15.3 A</b>	Power Factor	<b>80.5</b>
Duty	<b>Oil Well</b>	Insulation Class	<b>F</b>
Design Code	<b>D</b>	KVA Code	<b>F</b>
Drive End Bearing Size	<b>6311</b>	Opp Drive End Bearing Size	<b>6210</b>
UL	<b>No</b>	CSA	<b>N</b>
CE	<b>N</b>	IP Code	<b>23</b>
Number of Speeds	<b>1</b>		

### Technical Specifications

Electrical Type	<b>Squirrel Cage Induction Run</b>	Starting Method	<b>Across The Line</b>
Poles	<b>6</b>	Rotation	<b>Reversible</b>
Resistance Main	<b>.527 Ohms</b>	Mounting	<b>Rigid Base</b>
Motor Orientation	<b>Horizontal</b>	Drive End Bearing	<b>Ball</b>
Opp Drive End Bearing	<b>Ball</b>	Frame Material	<b>Cast Iron</b>
Shaft Type	<b>T</b>	Overall Length	<b>24.94 in</b>
Frame Length	<b>14.25 in</b>	Shaft Diameter	<b>1.875 in</b>
Shaft Extension	<b>4.81 in</b>	Assembly/Box Mounting	<b>F2/F1 Capable</b>
Outline Drawing	<b>B-SS200374-1425</b>	Connection Drawing	<b>A-EE7326C</b>



NOTES:

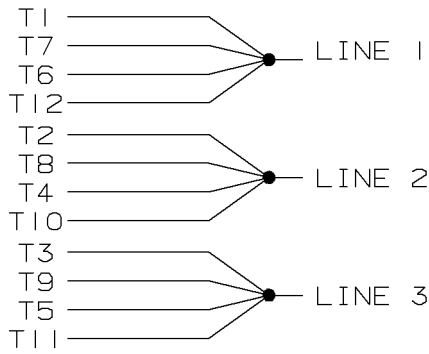
1. BOX CAN BE ROTATED IN 90° STEPS
2. BOX CAN BE MOUNTED F1 ON OPPOSITE SIDE BY REMOVING BRACKETS AND TURNING FRAME 180°
3. NAMEPLATE TO BE READ FROM CONDUIT BOX SIDE OF MOTOR

(B-SS200030)

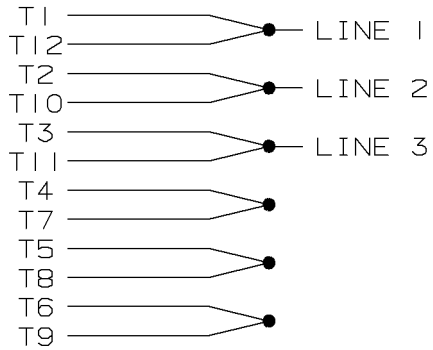
DASH	FRAME	B	C	2F	BS
1275	284T	11.75	23.44	9.50	4.75
1425	286T	13.25	24.94	11.00	5.50

		TOLERANCES UNLESS SPECIFIED		MARATHON ELECTRIC		DRAWN JL 04-27-1992	
		DEC.	INCHES			CHK	ML 05-07-1992
4	REDRAWN IN AUTOCAD	TAT	06-13-2005	ML	.X	±.1	APPD GK 05-07-1992
3	SHAFT HEIGHT DIMENSION WAS 7.00/6.97 CN 16763	DRS	02-24-2000		.XX	±.03	SCALE 1=4
2	REVISED TO F2 MTG	DA	09-22-1992		.XXX	±.005	REF
1	NEW DRAWING - DEV. ENG./E.B.	JL	05-12-1992		.XXXX	±.0005	FMF
NO.	REVISION	BY & DATE		CHK	ANG	±'30"	PREV
THIS DRAWING IN DESIGN AND DETAIL IS OUR PROPERTY AND MUST NOT BE USED EXCEPT IN CONNECTION WITH OUR WORK ALL RIGHTS OF DESIGN AND INVENTION ARE RESERVED THIS IS AN ELECTRONICALLY GENERATED DOCUMENT - DO NOT SCALE THIS PRINT				RFP	CAD FILE ss200374		SIZE DRAWING NO. PAGE OF REV.
				DIST	LB	B	SS200374 4

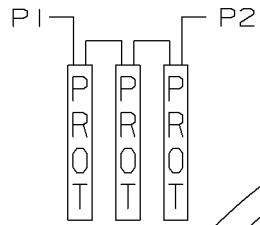
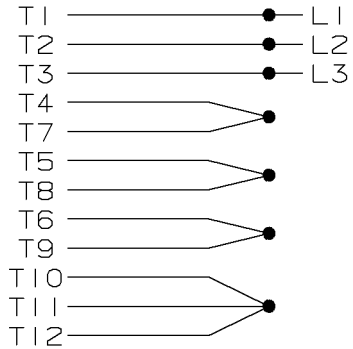
LOW VOLTAGE



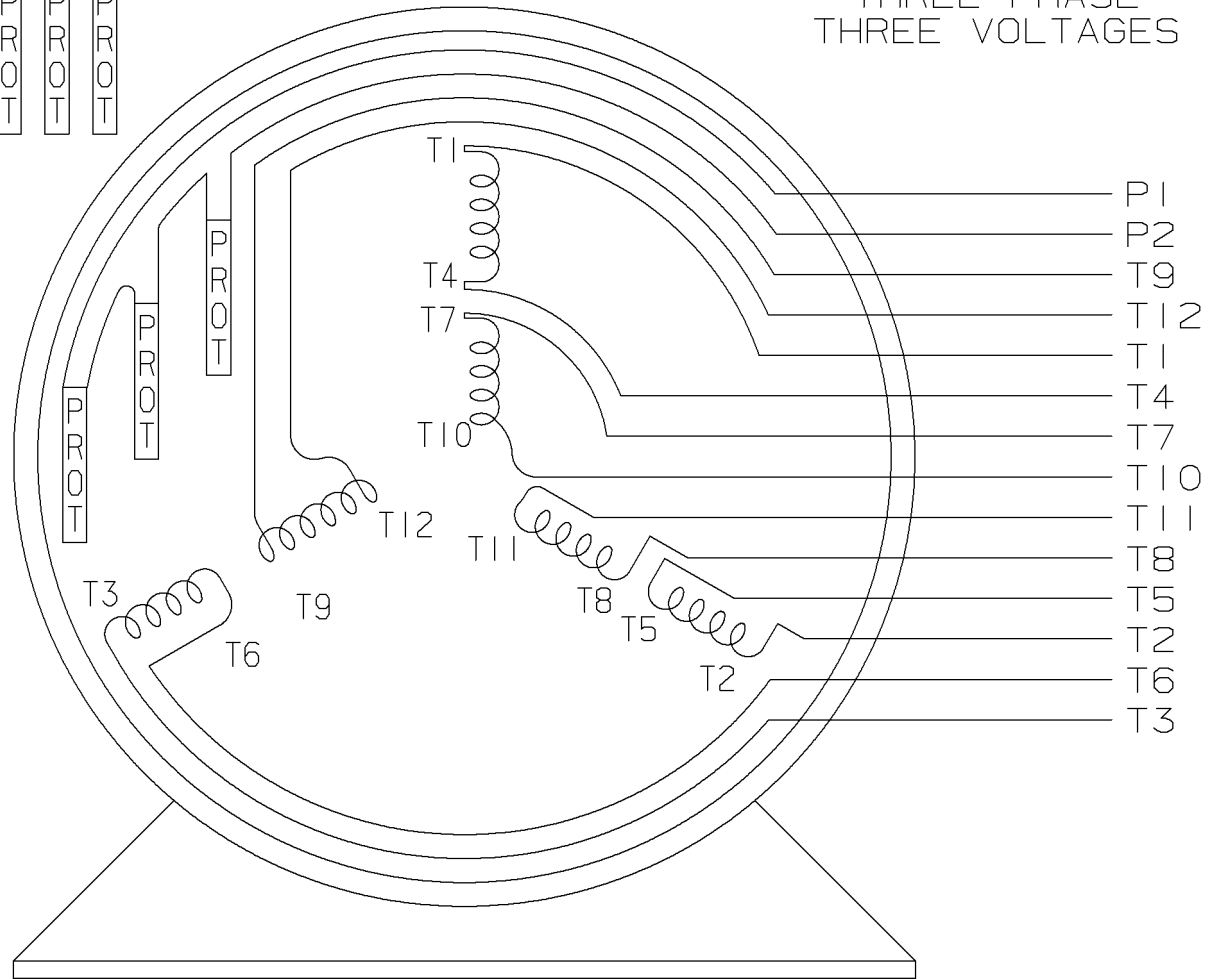
MED. VOLTAGE



HIGH VOLTAGE



THREE PHASE  
THREE VOLTAGES



L.V. 2 DELTA      M.V. 1 DELTA      H.V. 1Y

T6F

				<input checked="" type="checkbox"/> MAX. SURFACE ROUGHNESS UNLESS NOTED OTHERWISE	UNLESS OTHERWISE SPECIFIED DIMENSIONS ARE IN INCHES TOL. ON XX±      XXX±.005      XXXX±.0005      ANGLES±			
				MATL SPEC			DRAWN BY BLR      03-09-1998 CHKD BY ML      03-26-1998	
				FINISH	MARATHON ELECTRIC WAUSAU, WISCONSIN 54401		APPD BY GK      03-26-1998	
5	03-26-1998	REDRAWN ON CADD, NO CHANGE		BLR	PART NAME CONNECTION DIAGRAM 3Ø - 12 LEAD			DRWG NO A- EE7326C
REV	DATE	CHANGE		NAME	DISTRIBUTION - WA - LB - WP - LM		CADD FILE NO. EE7326C	

SHOP BOOK

PURCHASED

DISTRIBUTION - WA - LB - WP - LM

CADD FILE NO.

EE7326C

**CERTIFICATION DATA SHEET**

**Model#:** 286TTDP7689 AB **WINDING#:** 256685 NONE 3  
**CONN. DIAGRAM:** A-EE7326C **ASSEMBLY:** F2/F1 CAPABLE  
**OUTLINE:** B-SS200374-1425

**TYPICAL MOTOR PERFORMANCE DATA**

HP	KW	SYNC. RPM	F.L. RPM	FRAME	ENCLOSURE	KVA CODE	DESIGN
20	14.9	1200	1130	286T	DP	F	D

PH	Hz	VOLTS	FL AMPS	START TYPE	DUTY	INSL	S.F	AMB°C	ELEVATION
3	60	230/460/796	53/26.5/15.3	ACROSS THE LINE	OIL WELL	F3	1.15	40	3300

FULL LOAD EFF: 87.5	3/4 LOAD EFF: 88.5	1/2 LOAD EFF: 88.5	GTD. EFF	ELEC. TYPE	NO LOAD AMPS
FULL LOAD PF: 80.5	3/4 LOAD PF: 74.5	1/2 LOAD PF: 62.5	85.5	SQ CAGE IND RUN	26 / 13 / 7.5

F.L. TORQUE	LOCKED ROTOR AMPS	L.R. TORQUE	B.D. TORQUE	F.L. RISE°C
92.5 LB-FT	268 / 134 / 77.4	282 LB-FT 305	307 LB-FT 332	70

SOUND PRESSURE @ 3 FT.	SOUND POWER	ROTOR WK^2	MAX. WK^2	SAFE STALL TIME	STARTS /HOUR	APPROX. MOTOR WGT
66 dBA	76 dBA	3.1 LB-FT^2	- LB-FT^2	- SEC.	-	395 LBS.

**\*\*\* SUPPLEMENTAL INFORMATION \*\*\***

DE BRACKET TYPE	ODE BRACKET TYPE	MOUNT TYPE	ORIENTATION	SEVERE DUTY	HAZARDOUS LOCATION	DRIP COVER	SCREENS	PAINT
STANDARD	STANDARD	RIGID	HORIZONTAL	FALSE	NONE	FALSE	RODENT	GRAY (ENAMEL)

BEARINGS		GREASE	SHAFT TYPE	SPECIAL DE	SPECIAL ODE	SHAFT MATERIAL	FRAME MATERIAL
DE	OPE						
BALL	BALL	POLYREX EM	T	NONE	NONE	1045 HOT ROLLED (C-204)	CAST IRON
6311	6210						

THERMO-PROTECTORS				THERMISTORS	CONTROL	SPACE /n HEATERS
THERMOSTATS	PROTECTORS	WDG RTDs	BRG RTDs			
TSTATS (N/C)	NOT	NONE	NONE	NONE	FALSE	NONE VOLTS

If Inverter equals NONE, contact factory for further information

\*  
N  
O  
T  
E  
S  
\*

INVERTER TORQUE: NONE
INV. HP SPEED RANGE: NONE
ENCODER: NONE
NONE NONE
NONE NONE PPR
BRAKE: NONE NONE
NONE P/N NONE
NONE NONE
NONE FT-LB NONE V NONE Hz

DATE: 06/27/2017 03:35:39 AM  
 FORM 3531 REV.3 02/07/99  
 \*\* Subject to change without notice.

Data Sheet

Date: 16-06-2017  
 Customer: \_\_\_\_\_  
 Attention: \_\_\_\_\_  
 Submitted by: FAREEDA DUDEKULA



286TTDP7689

Submittal

Data @ 460 V

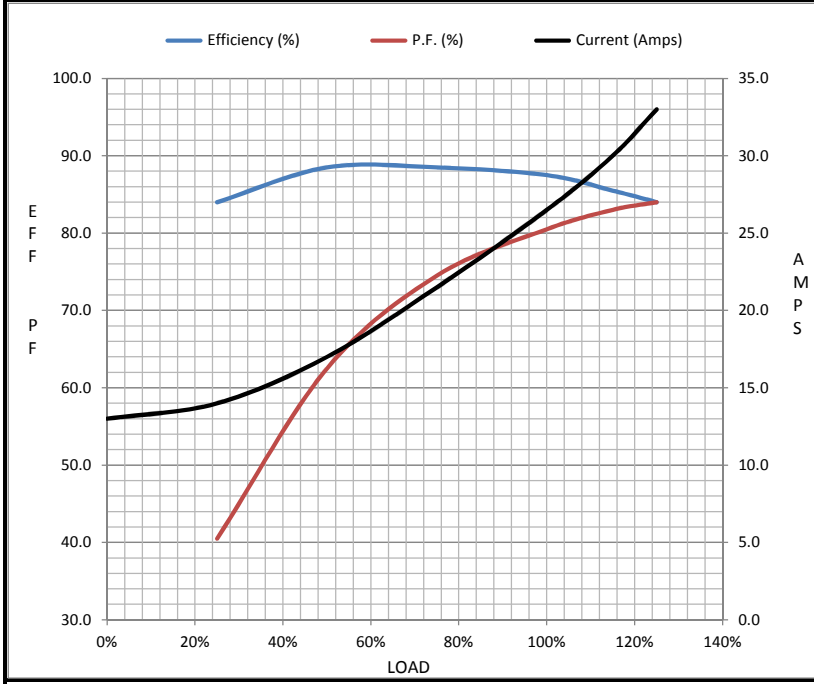
Motor Load Data

Load	0%	25%	50%	75%	100%	115%	125%	LR
Current (Amps)	13.0	14.0	17.0	21.5	26.5	30.0	33.0	134
Torque (ft-lb)	0.00	22.0	45.0	68.0	92.5	106	118	282
RPM	1200	1185	1170	1150	1130	1,120	1110	0
Efficiency (%)		84.0	88.5	88.5	87.5	85.5	84.0	
P.F. (%)	5.5	40.5	62.5	74.5	80.5	83.0	84.0	68.5

Motor Speed Data

	LR	Pull-Up	BD	Rated	Idle
Speed (RPM)	0	400	615	1130	1200
Current (Amps)	134	125	122	26.5	13.0
Torque (ft-lb)	282	285	307	92.5	0.00

Information Block				
HP	20.0			
Sync. RPM	1200			
Frame	286			
Enclosure	DP			
Construction	TDP			
Voltage	230/460/796 V			
Frequency	60 Hz			
Design	B			
LR Code letter	F			
Service Factor	1.15			
Temp Rise @ FL	70 ° C			
Duty	CONT			
Ambient	40 ° C			
Elevation	1,000 feet			
Rotor/Shaft wk <sup>2</sup>	3.1 Lb-Ft <sup>2</sup>			
Ref Wdg	256685 NONE			
Sound Pressure @ 1M	66 dBA			
VFD Rating	NONE			
Outline Dwg	B-SS200374-1425			
Conn. Diag	A-EE7326C			
Additional Specifications:				
0				
365THFS8036				
EQUIV CKT (OHMS / PHASE)				
R1	R2	X1	X2	Xm
0.3080	0.6570	1.2210	0.8360	21.4280



Speed - Torque Curve

