

# PRODUCT INFORMATION PACKET

**marathon®**  
Motors

Model No: 286TSTFPA14006

Catalog No: Y1614

Fire Pump Motor, 30 & 25 HP, 3 Ph, 60 & 50 Hz, 230/460 & 190/380 V, 3600 & 3000 RPM, 286TS Frame,  
TEFC



Regal and Marathon are trademarks of Regal Rexnord Corporation or one of its affiliated companies.

©2023 Regal Rexnord Corporation, All Rights Reserved. MC017097E

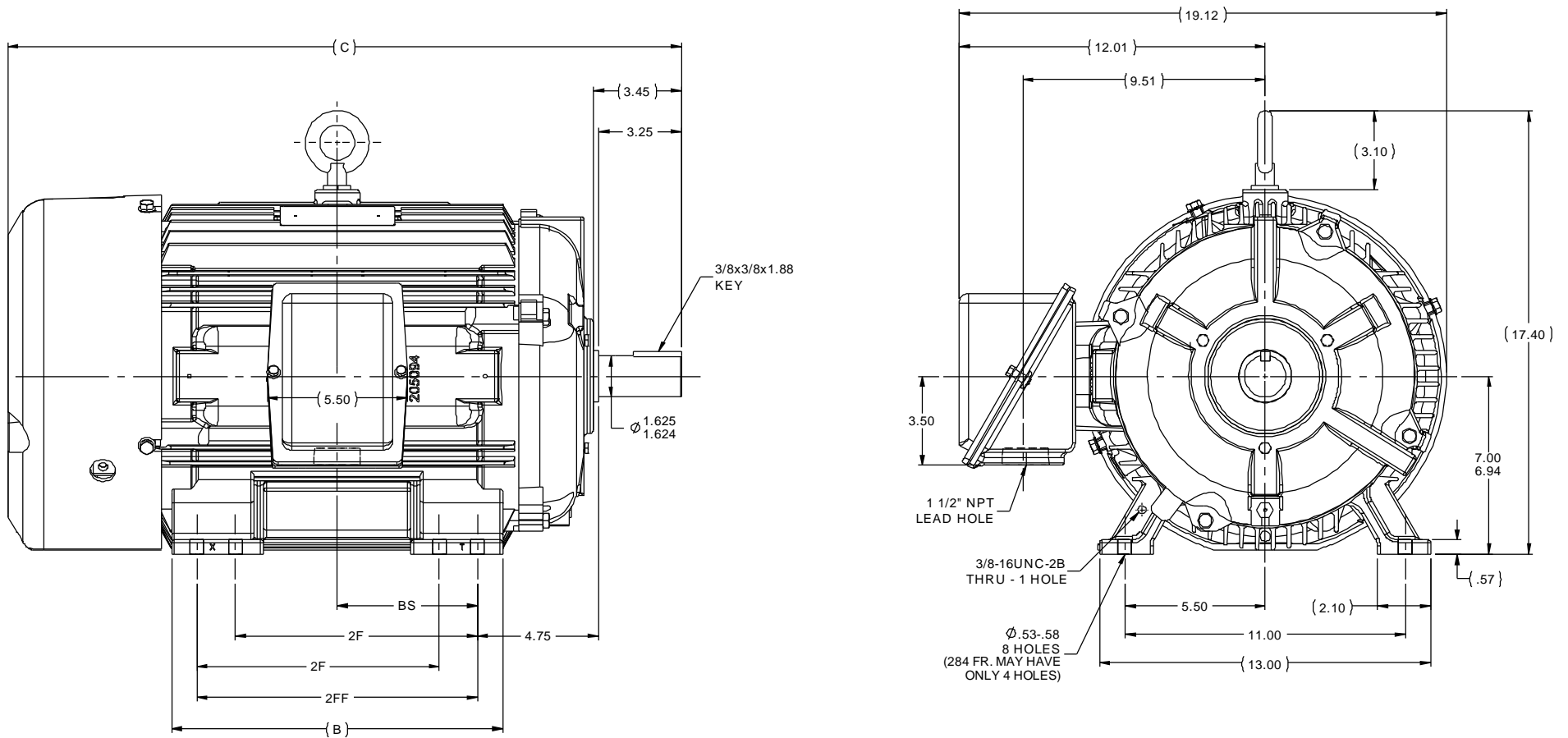
**RegalRexnord**

### Nameplate Specifications

Phase	<b>3</b>	Output HP	<b>30 &amp; 25 Hp</b>
Output KW	<b>22.4 &amp; 18.7 kW</b>	Voltage	<b>230/460 &amp; 190/380 V</b>
Speed	<b>3518 &amp; 2915 rpm</b>	Service Factor	<b>1.15 &amp; 1.15</b>
Frame	<b>286TS</b>	Enclosure	<b>Totally Enclosed Fan Cooled</b>
Thermal Protection	<b>No Protection</b>	Efficiency	<b>91 &amp; 90.2 %</b>
Ambient Temperature	<b>40 °C</b>	Frequency	<b>60 &amp; 50 Hz</b>
Current	<b>70/35 &amp; 71/35.5 A</b>	Power Factor	<b>88.5</b>
Duty	<b>Continuous</b>	Insulation Class	<b>F</b>
Design Code	<b>B</b>	KVA Code	<b>F</b>
Drive End Bearing Size	<b>6311</b>	Opp Drive End Bearing Size	<b>6210</b>
UL	<b>Listed</b>	CSA	<b>Y</b>
CE	<b>Y</b>	IP Code	<b>43</b>
Number of Speeds	<b>1</b>		

### Technical Specifications

Electrical Type	<b>Squirrel Cage Induction Run</b>	Starting Method	<b>Part Wdg Start Low Volt Only &amp; Wye Start Delta Run</b>
Poles	<b>2</b>	Rotation	<b>Reversible</b>
Resistance Main	<b>.28 Ohms</b>	Mounting	<b>Rigid Base</b>
Motor Orientation	<b>Horizontal</b>	Drive End Bearing	<b>Ball</b>
Opp Drive End Bearing	<b>Ball</b>	Frame Material	<b>Cast Iron</b>
Shaft Type	<b>TS</b>	Overall Length	<b>26.43 in</b>
Frame Length	<b>14.25 in</b>	Shaft Diameter	<b>1.625 in</b>
Shaft Extension	<b>3.45 in</b>	Assembly/Box Mounting	<b>F1/F2 CAPABLE</b>
Outline Drawing	<b>B-SS311235-1425</b>	Connection Drawing	<b>A-EE7358</b>



**NOTES:**

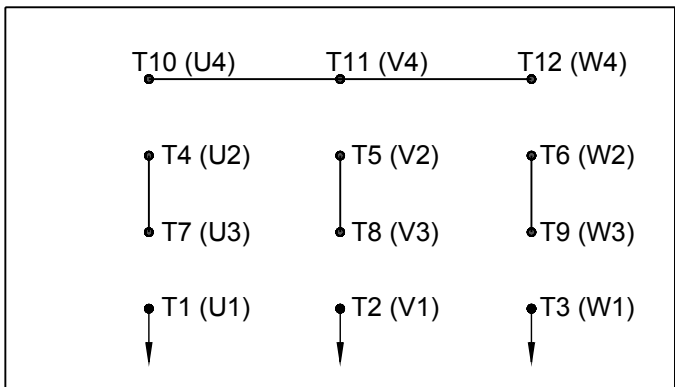
1. CONDUIT BOX CAN BE ROTATED IN 90° STEPS.
2. CONDUIT BOX CAN BE MOUNTED ON OPPOSITE SIDE BY REMOVING BRACKETS AND TURNING FRAME 180°.
3. NAMEPLATES TO BE READ FROM CONDUIT BOX SIDE OF MOTOR.

1275	284TS	24.93	11.50	9.50	---	4.75
1425	284/286TS	26.43	13.00	9.50	11.00	5.50
<b>DASH</b>	<b>FRAME</b>	<b>C</b>	<b>B</b>	<b>2F</b>	<b>2FF</b>	<b>BS</b>

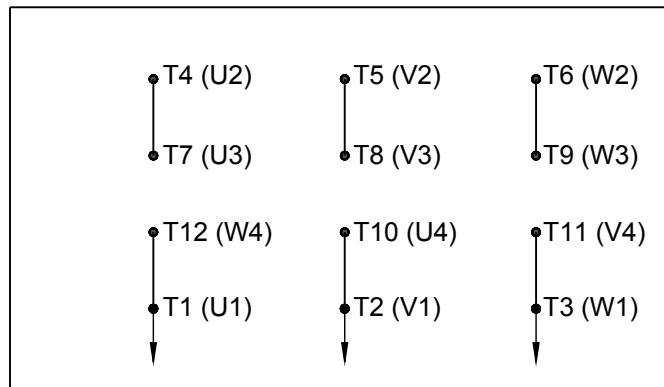
		TOLERANCES UNLESS SPECIFIED		marathon electric		DRAWN						
		DEC	INCHES			CAV 09-26-2001						
3	UPDATED FRAME TO NEW DESIGN AND TO SHOW 8 FOOT HOLES	ISAAC 10-2539 + MU112292	MSG 02-27-2013	DR	XX	±.03	TITLE	OUTLINE - TEFC - TFPA	CHK	ML 09-26-2001	APPR	BW 09-26-2001
2	REVISED C'BOX LEAD HOLE FROM 1 1/4 TO 1 1/2	MU39106	CAV 09-28-2001	ML	XXX	±.005		280TS FR. - STD. - 11.00 LAM	SCALE	1:4	REF	
1	NEW DRAWING	MU39106	CAV 09-26-2001	ML	XXXX	±.0005	MAT'L		REF		FMF	MU39106
NO	REVISION	BY & DATE	CHK	LANG	±7'30"	FINISH	PREV		PAGE	OF		
THIRD ANGLE PROJECTION		RFP		NETWORK FILE NAME		SS311235	SIZE	B	DRAWING NO	SS311235	REV	3

# HIGH VOLTAGE

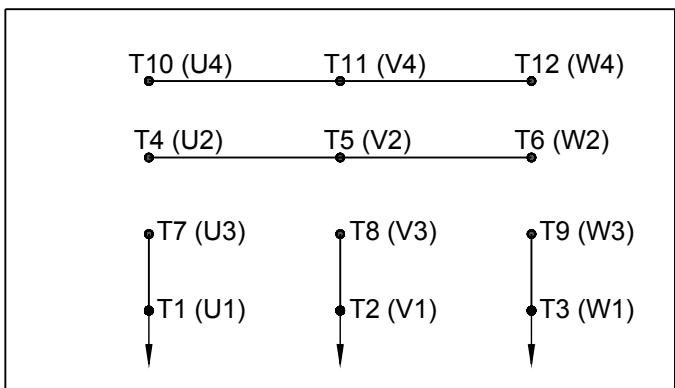
WYE START



DELTA RUN

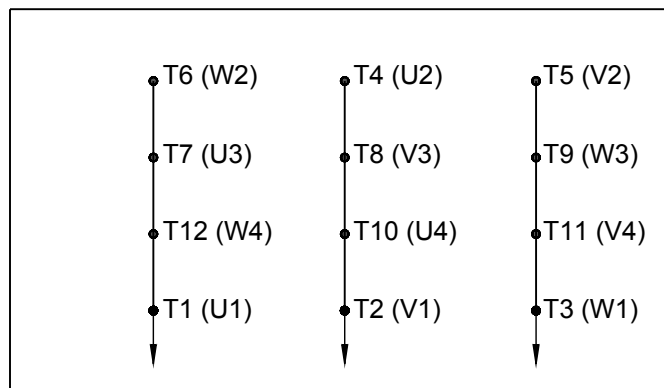


WYE START



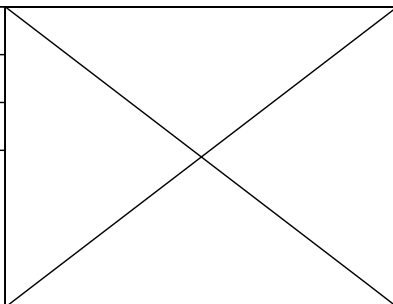
# LOW VOLTAGE

DELTA RUN



4/2 CKTY  $\triangle$

DRAWING REVISION D	REVISION BY JWO	DATE 01-26-2016
ECO ECO-0092547	APPROVED BY TB	DATE 01-26-2016



DRAWN BY BLR
DATE 03-09-1998
APPROVED BY GK
DATE 03-23-1998
REFERENCE
THIRD ANGLE PROJECTION

Regal Beloit America, Inc.	
DESCRIPTION <b>CONN DIAGRAM-EXTERNAL</b> 12 LEAD - DUAL VOLT. - WYE START - DELTA RUN	
MATERIAL	PROCESS/FINISH
SIZE <b>A</b>	DRAWING NUMBER <b>EE7358</b>
SHEET 1 OF 1	

ADDED IEC MARKINGS

COPYRIGHT REGAL BELOIT AMERICA, INC. ALL RIGHTS RESERVED. PROPRIETARY AND CONFIDENTIAL INFORMATION - THIS DOCUMENT IS THE PROPERTY OF REGAL BELOIT AMERICA, INC. ("OWNER") AND CONTAINS OWNER'S PROPRIETARY INFORMATION. ANY PERSON, CORPORATION OR OTHER FIRM RECEIVING IT IS DEEMED, BY RECEIVING IT, TO AGREE THAT IT, AND/OR ANY PART OF IT, SHALL NOT BE DISCLOSED TO ANY PERSON, CORPORATION OR OTHER ENTITY, DUPLICATED, AND/OR USED, EXCEPT AS EXPRESSLY APPROVED IN WRITING IN ADVANCE BY OWNER. THIS DOCUMENT SHALL BE RETURNED TO OWNER UPON REQUEST. IT MAY BE SUBJECT TO CERTAIN RESTRICTIONS UNDER APPLICABLE EXPORT CONTROL LAWS AND REGULATIONS.



P.O. BOX 8003  
WAUSAU, WI 54401-8003  
PH. 715-675-3311

DATA VOLTS: 460

**CERTIFICATION DATA SHEET**

CUSTOMER: \_\_\_\_\_ CUSTOMER P.O. #: \_\_\_\_\_  
 ORDER #: \_\_\_\_\_ REFERENCE MODEL #: 286TSTFPA14006  
 CONN. DIAGRAM: A-EE7358 CAT #: N/A  
 OUTLINE: B-SS311235-1425 CUSTOMER PART #: \_\_\_\_\_  
 WINDING: K2562198 NONE 2 MOUNTING: F1/F2 CAPABLE  
 SPEED: \_\_\_\_\_

**TYPICAL MOTOR PERFORMANCE DATA**

HP	KW	SYNC RPM	FL RPM	FRAME	ENCLOSURE	TYPE	KVA CODE	DESIGN
30	22.4	3600	3518	286TS	TEFC	TFP	F	B

PH	HZ	VOLTS	AMPS	START TYPE	DUTY	INSL	S.F.	AMB	ELEV.
3	60/50	230/460#190/380	70/35&71/35.5	WS(LV ONLY) & YDRU	CONT	F	1.15	40	3300

F.L. EFF	91.0	3/4 LD EFF	91.7	1/2 LD EFF	91.0	GTD EFF	ELECT. TYPE
F.L. PF	88.5	3/4 LD PF	86.0	1/2 LD PF	80.0	89.5	SQ CAGE IND RUN

F.L. TORQUE	LR AMPS @ 460 V	L.R. TORQUE	B.D. TORQUE	F.L. RISE (°C)
44.8 LB-FT	205	80.0 LB-FT 179%	110 LB-FT 246%	75

@ 3 FT.	POWER	ROTOR WK <sup>2</sup>	MAX. LOAD WK <sup>2</sup>	SAFE STALL TIME	STARTS/HOUR	MOTOR WGT
75 dBA	84 dBA	1.65 LB-FT <sup>2</sup>	0 LB-FT <sup>2</sup>	20 SEC.	0	525 LB.

**\*\*\* SUPPLEMENTAL INFORMATION \*\*\***

DE BRACKET TYPE	ODE BRACKET TYPE	MOUNT TYPE	MOTOR ORIENTATION	SEVERE DUTY	HAZARDOUS LOCATION	DRIP COVER	SCREENS	PAINT
STANDARD	STANDARD	RIGID	HORIZONTAL	NO	NONE	NO	NONE	RED (ENAMEL)

BEARINGS		GREASE	SHAFT TYPE	SPECIAL DE	SPECIAL ODE	SHAFT MATERIAL	FRAME MATERIAL
DE	ODE	POLYREX EM	TS	NONE	NONE	1045 HOT ROLLED (C-204)	CAST IRON
BALL	BALL						
6311	6210						

THERMOSTATS	PROTECTORS	WDG RTD's	BRG RTD's	THERMISTORS	CONTROL	SPACE HEATERS
NONE	NOT	NONE	NONE	NONE	FALSE	NA

R1 (ohms/ph)	R2 (ohms/ph)	X1 (ohms/ph)	X2 (ohms/ph)	Xm (ohms/ph)	VIBRATION (in/sec)	FLOAT
0.199	0.18	0.766	0.776	27.198	0.150	ODE

* N O T E S *	INVERTER TORQUE: NONE INV. HP SPEED RANGE: NONE					
	ENCODER: NONE NONE NONE					
	BRAKE: NONE NONE NONE					
	FT-LB: NA VOLTAGE: NONE					
	UL: NONE					

PREPARED BY: FAREEDA DUDEKULA  
 DATE: 9/17/2018

Data Sheet

Date: 12/10/2018  
 Customer: \_\_\_\_\_  
 Attention: \_\_\_\_\_  
 Submitted by: FAREEDA DUDEKULA



286TSTFPA14006

Submittal

Data @ 460 V

Motor Load Data

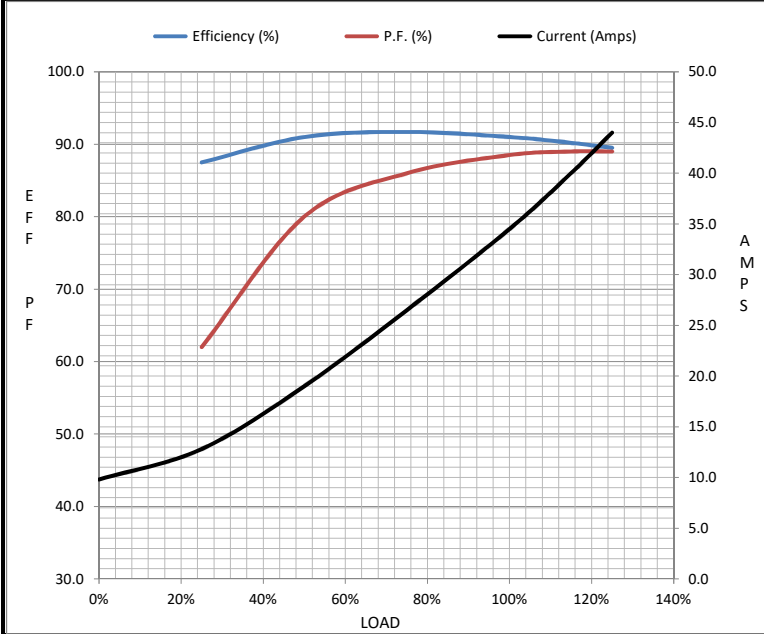
Load	0%	25%	50%	75%	100%	115%	125%	LR
Current (Amps)	9.8	12.8	19.0	26.5	34.5	40.0	44.0	205
Torque (ft-lb)	0.00	11.0	22.0	33.5	44.8	51.8	56.5	80.0
RPM	3600	3580	3560	3540	3518	3,505	3490	0
Efficiency (%)		87.5	91.0	91.7	91.0	90.2	89.5	
P.F. (%)	9.0	62.0	80.0	86.0	88.5	89.0	89.0	36.0

Motor Speed Data

	LR	Pull-Up	BD	Rated	Idle
Speed (RPM)	0	1200	3150	3518	3600
Current (Amps)	205	190	125	34.5	9.8
Torque (ft-lb)	80.0	70.0	110	44.8	0.00

Information Block

HP	30.0			
Sync. RPM	3600			
Frame	286			
Enclosure	TEFC			
Construction	TFS			
Voltage	230/460#190/380 V			
Frequency	60 Hz			
Design	B			
LR Code letter	F			
Service Factor	1.15			
Temp Rise @ FL	75 °C			
Duty	CONT			
Ambient	40 °C			
Elevation	1,000 feet			
Rotor/Shaft wk <sup>2</sup>	1.65 Lb-Ft <sup>2</sup>			
Ref Wdg	K2562198 NONE			
Sound Pressure @ 1M	75 dBA			
VFD Rating	NONE			
Outline Dwg	B-SS311235-1425			
Conn. Diag	A-EE7358			
Additional Specifications:				
0				
0				
EQUIV CKT (OHMS / PHASE)				
R1	R2	X1	X2	Xm
0.1990	0.1800	0.7660	0.7760	27.1980



Speed - Torque Curve

