

PRODUCT INFORMATION PACKET

marathon®
Motors

Model No: 286TSTFCA6005

Catalog No: GT1130

General Purpose Motors, TEFC, 30 HP, 3 Ph, 60 Hz, 575 V, 3560 RPM, 286TS

General Purpose Motors



Regal and Marathon are trademarks of Regal Rexnord Corporation or one of its affiliated companies.

©2022 Regal Rexnord Corporation, All Rights Reserved. MC017097E

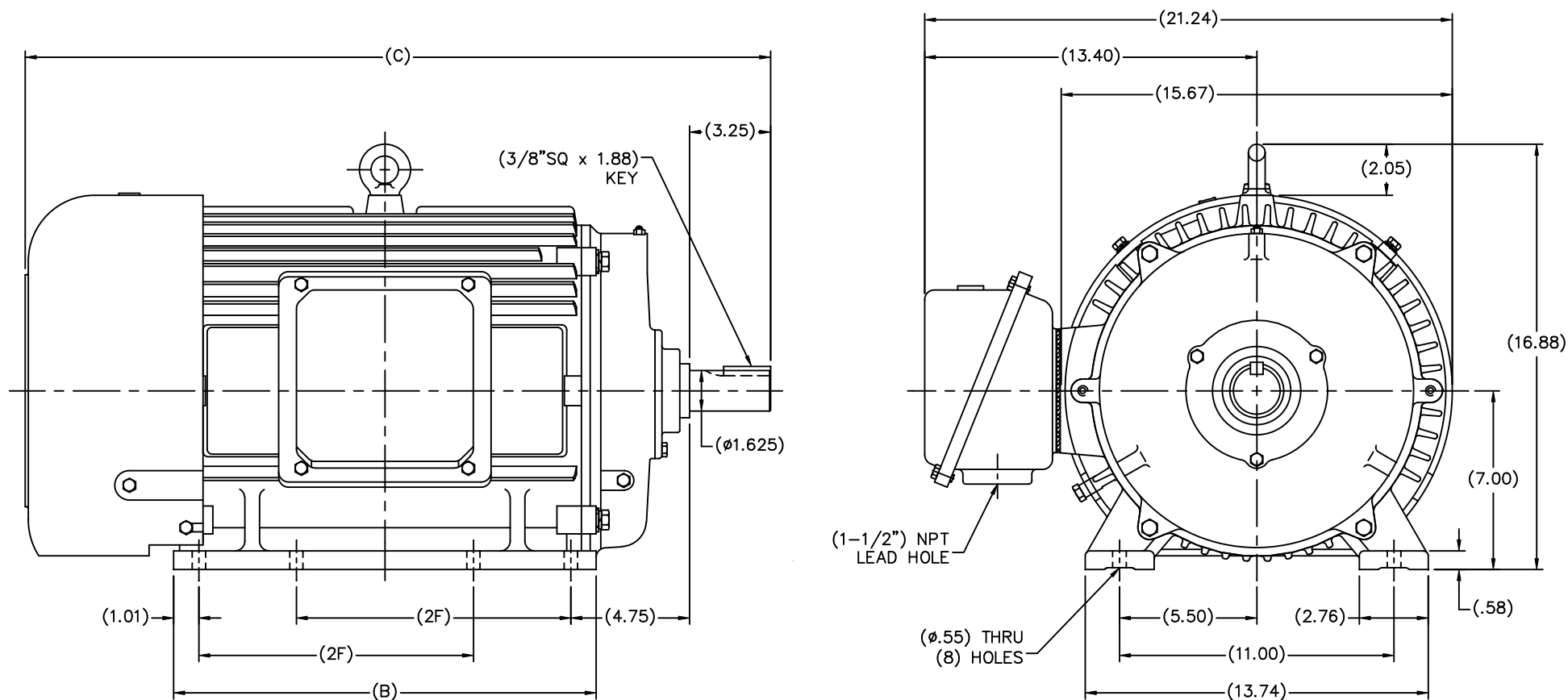
RegalRexnord

Nameplate Specifications

Output HP	30 Hp	Output KW	22.4 kW
Frequency	60 Hz	Voltage	575 V
Current	27.2 A	Speed	3560 rpm
Service Factor	1.15	Phase	3
Efficiency	93 %	Power Factor	89
Duty	Continuous	Insulation Class	F
Design Code	B	KVA Code	G
Frame	286TS	Enclosure	Totally Enclosed Fan Cooled
Thermal Protection	No	Ambient Temperature	40 °C
Drive End Bearing Size	6211	Opp Drive End Bearing Size	6211
UL	Recognized	CSA	Y
CE	Y	IP Code	43
Number of Speeds	1		

Technical Specifications

Electrical Type	Squirrel Cage Induction Run	Starting Method	Across The Line
Poles	2	Rotation	Reversible
Resistance Main	.23 Ohms	Mounting	Rigid Base
Motor Orientation	Horizontal	Drive End Bearing	Ball
Opp Drive End Bearing	Ball	Frame Material	Cast Iron
Shaft Type	TS	Overall Length	30.00 in
Shaft Diameter	1.625 in	Shaft Extension	3.25 in
Assembly/Box Mounting	F1/F2 CAPABLE		
Connection Drawing	A-EE7300	Outline Drawing	SS620246-286TS



(DIMENSIONS IN TABLE ARE CONSIDERED REFERENCE)

284TS	28.82	15.75	9.50
286TS	30.00	16.93	11.00
FRAME	C	B	2F

(MAY NOT BE DRAWN TO SCALE)

		TOLERANCES UNLESS SPECIFIED		MARATHON ELECTRIC	DRAWN MSG 01-12-2010 CHK MJS 01-13-2010 APPD SB 01-13-2010
NO.	REVISION	BY & DATE	CHK		
			DEC.	INCHES	
			.X	±.1	
			.XX	±.03	
			.XXX	±.005	
			.XXXX	±.0005	
			ANG	±7°30"	
THIS DRAWING IN DESIGN AND DETAIL IS OUR PROPERTY AND MUST NOT BE USED EXCEPT IN CONNECTION WITH OUR WORK. ALL RIGHTS OF DESIGN AND INVENTION ARE RESERVED. THIS IS AN ELECTRONICALLY GENERATED DOCUMENT - DO NOT SCALE THIS PRINT				RFP 01-14-2010	
				CAD FILE SS620246	
				FINISH	
				SIZE B	DRAWING NO. SS620246
				PAGE OF	REV.

THREE PHASE - SINGLE VOLTAGE MOTOR - CONDUIT BOX @ 'A'

TO REVERSE ROTATION:
INTERCHANGE ANY TWO
LINE LEAD CONNECTIONS.

TERMINAL BLOCK WHEN SPECIFIED



IF MOTOR HAS 6 LEADS



A-9806 DECAL

OPTIONAL CORD CONNECTION



VIEW OF TERMINAL END

DRAWING REVISION AB	REVISION BY JJB	DATE 06-27-2017
ECO ECO-0125361	APPROVED BY TB	DATE 06-27-2017
ECO DESCRIPTION UPDATED TO CURRENT STANDARDS		
<small>COPYRIGHT REGAL BELOIT AMERICA, INC. ALL RIGHTS RESERVED. PROPRIETARY AND CONFIDENTIAL INFORMATION - THIS DOCUMENT IS THE PROPERTY OF REGAL BELOIT AMERICA, INC. ("OWNER") AND CONTAINS OWNER'S PROPRIETARY INFORMATION. ANY PERSON, CORPORATION OR OTHER FIRM RECEIVING IT IS DEEMED, BY RECEIVING IT, TO AGREE THAT IT, AND/OR ANY PART OF IT, SHALL NOT BE DISCLOSED TO ANY PERSON, CORPORATION OR OTHER ENTITY, DUPLICATED, AND/OR USED, EXCEPT AS EXPRESSLY APPROVED IN WRITING IN ADVANCE BY OWNER. THIS DOCUMENT SHALL BE RETURNED TO OWNER UPON REQUEST. IT MAY BE SUBJECT TO CERTAIN RESTRICTIONS UNDER APPLICABLE EXPORT CONTROL LAWS AND REGULATIONS.</small>		

DRAWN BY DA
DATE 03-26-1993
APPROVED BY TB
DATE 03-26-1993
REFERENCE
THIRD ANGLE PROJECTION



Regal Beloit America, Inc.

DESCRIPTION
CONNECTION DIAGRAM
EXTERNAL - SINGLE VOLTAGE - 3Ø MOTOR

MATERIAL PROCESS/FINISH

SIZE A	DRAWING NUMBER EE7300	SHEET 1 OF 1
-----------	--------------------------	-----------------

CERTIFICATION DATA SHEET

Model#: 286TSTFCA6005 AA

WINDING#: CHT28620001 NONE 3

CONN. DIAGRAM: A-EE7300

ASSEMBLY: F1/F2 CAPABLE

OUTLINE: B-SS620246

TYPICAL MOTOR PERFORMANCE DATA

HP	KW	SYNC. RPM	F.L. RPM	FRAME	ENCLOSURE	KVA CODE	DESIGN
30	22.4	3600	3560	286TS	TEFC	G	B

PH	Hz	VOLTS	FL AMPS	START TYPE	DUTY	INSL	S.F	AMB°C	ELEVATION
3	60	575	27.2	ACROSS THE LINE	CONTINUOUS	F7	1.15/1.15	40	3300

FULL LOAD EFF: 93	3/4 LOAD EFF: 93	1/2 LOAD EFF: 92.4	GTD. EFF	ELEC. TYPE	NO LOAD AMPS
FULL LOAD PF: 89	3/4 LOAD PF: 88	1/2 LOAD PF: 82	91	SQ CAGE IND RUN	7.2

F.L. TORQUE	LOCKED ROTOR AMPS	L.R. TORQUE	B.D. TORQUE	F.L. RISE°C
44.2 LB-FT	173.6	95 LB-FT 215	132 LB-FT 300	60

SOUND PRESSURE @ 3 FT.	SOUND POWER	ROTOR WK^2	MAX. WK^2	SAFE STALL TIME	STARTS /HOUR	APPROX. MOTOR WGT
72 dBA	82 dBA	3.2 LB-FT^2	35 LB-FT^2	20 SEC.	2	550 LBS.

*** SUPPLEMENTAL INFORMATION ***

DE BRACKET TYPE	ODE BRACKET TYPE	MOUNT TYPE	ORIENTATION	SEVERE DUTY	HAZARDOUS LOCATION	DRIP COVER	SCREENS	PAINT
STANDARD	STANDARD	RIGID	HORIZONTAL	FALSE	NONE	FALSE	NONE	BLUE (ENAMEL)

BEARINGS		GREASE	SHAFT TYPE	SPECIAL DE	SPECIAL ODE	SHAFT MATERIAL	FRAME MATERIAL
DE	OPE						
BALL	BALL						
6211	6211	POLYREX EM	TS	NONE	NONE	1045 HOT ROLLED (C-204)	CAST IRON

THERMO-PROTECTORS				THERMISTORS	CONTROL	SPACE /n HEATERS
THERMOSTATS	PROTECTORS	WDG RTDs	BRG RTDs			
NONE	NOT	NONE	NONE	NONE	FALSE	NONE VOLTS

If Inverter equals NONE, contact factory for further information

* N O T E S *	INVERTER TORQUE: NONE					
	INV. HP SPEED RANGE: NONE					
	ENCODER: NONE					
	NONE NONE					
	NONE NONE PPR					
	BRAKE: NONE NONE					
	NONE P/N NONE					
	NONE NONE					
	NONE FT-LB		NONE V		NONE Hz	

DATE: 06/27/2017 02:23:05 AM

FORM 3531 REV.3 02/07/99

** Subject to change without notice.

Data Sheet

Date: 6/29/2017

Customer: _____

Attention: _____

Submitted by: FAREEDA DUDEKULA



286TSTFCA6005

Submittal

Data @ 575 V

Motor Load Data

Load	0%	25%	50%	75%	100%	115%	125%	LR	
Current (Amps)	7.2	9.8	14.8	20.8	27.2	31.2	33.6	174	
Torque (ft-lb)	0.00	11.0	22.0	33.0	44.2	51.0	55.5	95.0	
RPM	3600	3590	3580	3570	3560	3,552	3548	0	
Efficiency (%)		89.5	92.4	93.0	93.0	93.0	92.4		
P.F. (%)	8.0	63.5	82.0	88.0	89.0	89.5	90.0	35.0	

Motor Speed Data

	LR	Pull-Up	BD	Rated	Idle	Information Block																																																																																																																														
Speed (RPM)	0	1800	3350	3560	3600	HP	30.0																																																																																																																													
Current (Amps)	174	156	108	27.2	7.2	Sync. RPM	3600																																																																																																																													
Torque (ft-lb)	95.0	72.5	132	44.2	0.00	Frame	286																																																																																																																													
<div><div>— Efficiency (%)</div><div>— P.F. (%)</div><div>— Current (Amps)</div><div>EFFICIENCY (%)</div><div>P.F. (%)</div><div>CURRENT (AMPS)</div></div> <tr><td>Enclosure</td><td colspan="4">TEFC</td></tr> <tr><td>Construction</td><td colspan="4">TFC</td></tr> <tr><td>Voltage</td><td colspan="4">575 V</td></tr> <tr><td>Frequency</td><td colspan="4">60 Hz</td></tr> <tr><td>Design</td><td colspan="4">A</td></tr> <tr><td>LR Code letter</td><td colspan="4">G</td></tr> <tr><td>Service Factor</td><td colspan="4">1.15</td></tr> <tr><td>Temp Rise @ FL</td><td colspan="4">60 ° C</td></tr> <tr><td>Duty</td><td colspan="4">CONT</td></tr> <tr><td>Ambient</td><td colspan="4">40 ° C</td></tr> <tr><td>Elevation</td><td colspan="4">1,000 feet</td></tr> <tr><td>Rotor/Shaft wk²</td><td colspan="4">3.2 Lb-Ft²</td></tr> <tr><td>Ref Wdg</td><td colspan="4">CHT28620001 NONE</td></tr> <tr><td>Sound Pressure @ 1M</td><td colspan="4">72 dBA</td></tr> <tr><td>VFD Rating</td><td colspan="4">NONE</td></tr> <tr><td>Outline Dwg</td><td colspan="4">B-SS620246</td></tr> <tr><td>Conn. Diag</td><td colspan="4">A-EE7300</td></tr> <tr><td colspan="7">Additional Specifications:</td></tr> <tr><td colspan="7">0</td></tr> <tr><td colspan="7">0</td></tr> <tr><td colspan="7">EQUIV CKT (OHMS / PHASE)</td></tr> <tr><td>R1</td><td>R2</td><td>X1</td><td>X2</td><td>Xm</td><td colspan="2"></td></tr> <tr><td>0.2440</td><td>0.1480</td><td>0.9390</td><td>1.2790</td><td>46.0730</td><td colspan="2"></td></tr>						Enclosure	TEFC				Construction	TFC				Voltage	575 V				Frequency	60 Hz				Design	A				LR Code letter	G				Service Factor	1.15				Temp Rise @ FL	60 ° C				Duty	CONT				Ambient	40 ° C				Elevation	1,000 feet				Rotor/Shaft wk²	3.2 Lb-Ft²				Ref Wdg	CHT28620001 NONE				Sound Pressure @ 1M	72 dBA				VFD Rating	NONE				Outline Dwg	B-SS620246				Conn. Diag	A-EE7300				Additional Specifications:							0							0							EQUIV CKT (OHMS / PHASE)							R1	R2	X1	X2	Xm			0.2440	0.1480	0.9390	1.2790	46.0730		
						Enclosure	TEFC																																																																																																																													
						Construction	TFC																																																																																																																													
						Voltage	575 V																																																																																																																													
						Frequency	60 Hz																																																																																																																													
						Design	A																																																																																																																													
						LR Code letter	G																																																																																																																													
						Service Factor	1.15																																																																																																																													
						Temp Rise @ FL	60 ° C																																																																																																																													
						Duty	CONT																																																																																																																													
						Ambient	40 ° C																																																																																																																													
						Elevation	1,000 feet																																																																																																																													
						Rotor/Shaft wk²	3.2 Lb-Ft²																																																																																																																													
						Ref Wdg	CHT28620001 NONE																																																																																																																													
						Sound Pressure @ 1M	72 dBA																																																																																																																													
						VFD Rating	NONE																																																																																																																													
						Outline Dwg	B-SS620246																																																																																																																													
Conn. Diag	A-EE7300																																																																																																																																			
Additional Specifications:																																																																																																																																				
0																																																																																																																																				
0																																																																																																																																				
EQUIV CKT (OHMS / PHASE)																																																																																																																																				
R1	R2	X1	X2	Xm																																																																																																																																
0.2440	0.1480	0.9390	1.2790	46.0730																																																																																																																																

Speed -Torque Curve

