

PRODUCT INFORMATION PACKET

Model No: 286TSTDC6001

Catalog No: U774

General Purpose Motor, 40 & 30 HP, 3 Ph, 60 & 50 Hz, 208-230/460 & 200/400 V, 3600 & 3000 RPM,
286TS Frame, DP



Regal and Marathon are trademarks of Regal Rexnord Corporation or one of its affiliated companies.

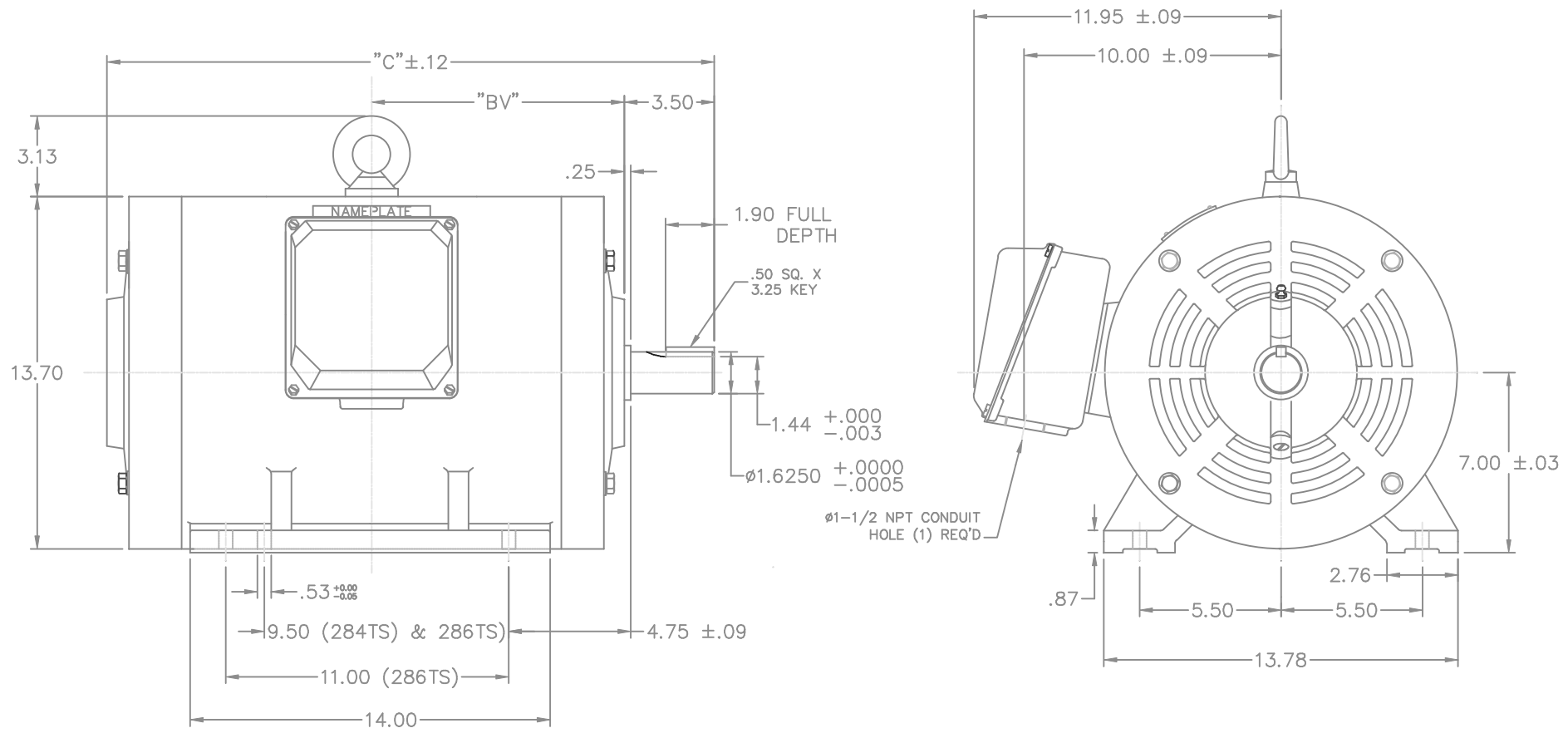
©2023 Regal Rexnord Corporation, All Rights Reserved. MC017097E

Nameplate Specifications

Phase	3	Output HP	40 & 30 Hp
Output KW	30.0 & 22.4 kW	Voltage	208-230/460 & 200/400 V
Speed	3560 & 2960 rpm	Service Factor	1.15 & 1.15
Frame	286TS	Enclosure	Drip Proof
Thermal Protection	No Protection	Efficiency	93.6 & 93 %
Ambient Temperature	40 °C	Frequency	60 & 50 Hz
Current	100-91/45.5 & 76/38 A	Power Factor	88
Duty	Continuous	Insulation Class	F
Design Code	B	KVA Code	H
Drive End Bearing Size	6312	Opp Drive End Bearing Size	6211
UL	Recognized	CSA	Y
CE	Y	IP Code	12
Number of Speeds	1		

Technical Specifications

Electrical Type	Squirrel Cage Induction Run	Starting Method	Across The Line
Poles	2	Rotation	Reversible
Resistance Main	.198 Ohms	Mounting	Rigid Base
Motor Orientation	Horizontal	Drive End Bearing	Ball
Opp Drive End Bearing	Ball	Frame Material	Cast Iron
Shaft Type	TS	Overall Length	22.17 in
Shaft Diameter	1.625 in	Shaft Extension	3.5 in
Assembly/Box Mounting	F1 ONLY		
Outline Drawing	16955360ME	Connection Drawing	004172-01ME



NOTE: 286T HAS 6 MTG. HOLES, USING 254T AND 256T LOCATIONS

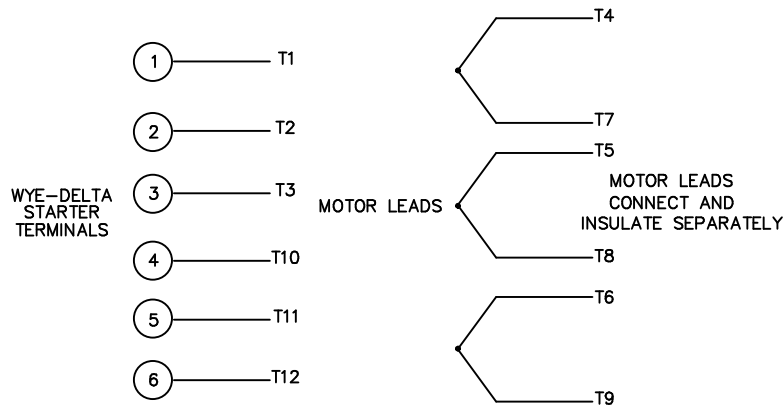
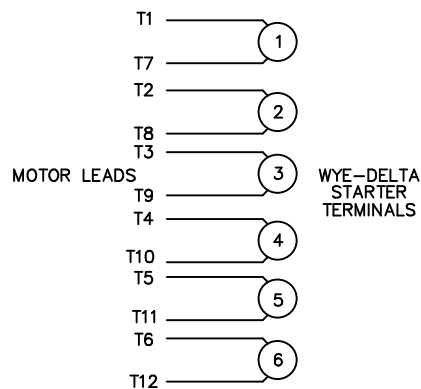
FRAME DESIGN	"C"	"BV"
284TS	22.17	9.11
286TS	23.62	9.83

		TOLERANCES UNLESS SPECIFIED		MARATHON ELECTRIC		DRAWN CTO 04-24-2002	
		DEC.	INCHES			CHK	ML 05-20-2002
		.X	±.1			APPD	SB 05-21-2002
		.XX	±.03	TITLE		SCALE 1=1	
2	UPDATED DRAWING	RJW	04-25-07	.XXX	±.005	REF	
1	NEW DRAWING	CTO	05/21/02	.XXXX	±.0005	MAT'L CAST IRON	
NO.	REVISION	BY & DATE	CHK	ANG	±1/2"	PREV	
THIS DRAWING IN DESIGN AND DETAIL IS OUR PROPERTY AND MUST NOT BE USED EXCEPT IN CONNECTION WITH OUR WORK ALL RIGHTS OF DESIGN AND INVENTION ARE RESERVED THIS IS AN ELECTRONICALLY GENERATED DOCUMENT - DO NOT SCALE THIS PRINT				RFP	CAD FILE	16955360me	SIZE B
				DIST	DRAWING NO. 169553-60ME		REV. 2

WYE - DELTA STARTING USEABLE ON 2, 4 AND 6 POLE MOTORS.

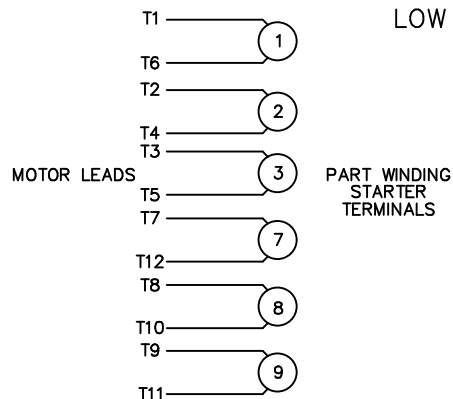
LOW VOLTAGE CONNECTION

HIGH VOLTAGE CONNECTION



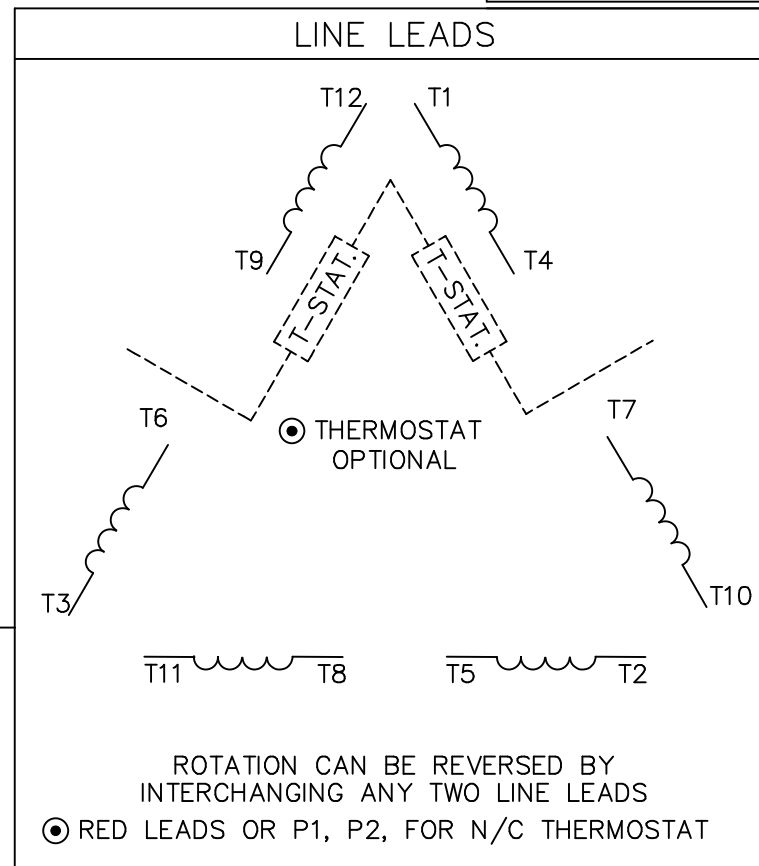
REFER TO THE WYE-DELTA STARTER CONNECTION INSTRUCTIONS FOR PROPER CONNECTION OF POWER LINES TO STARTER.

PART WINDING START USABLE ON 4 & 6 POLE MOTORS
LOW VOLTAGE CONNECTION ONLY



REFER TO THE PART WINDING STARTER INSTRUCTIONS FOR PROPER CONNECTION OF POWER LINES TO STARTER.

REFER TO THE CUTLER-HAMMER OR EQUIV. FOR PROPER SELECTION OF OVERLOAD HEATER COILS.



ROTATION CAN BE REVERSED BY INTERCHANGING ANY TWO LINE LEADS
● RED LEADS OR P1, P2, FOR N/C THERMOSTAT

ACROSS THE LINE START & RUN				
	LINE 1	LINE 2	LINE 3	JOIN & INSULATE SEPARATELY
HIGH VOLT	T1, T12	T2, T10	T3, T11	(T4, T7) (T5, T8) (T6, T9)
LOW VOLT	T1, T6 T7, T12	T2, T4 T8, T10	T3, T5 T9, T11	

				TOLERANCES UNLESS SPECIFIED				DRAWN RJW 07-19-2007	
				DEC.	INCHES			CHK ML 07-19-2007	
				.X	±.1			APPD GK 07-19-2007	
				.XX	±.02			SCALE 1=1	
				.XXX	±.005			REF MU61151	
				.XXXX	±.0005	MAT'L.		FMF	
NO.	REVISION	BY & DATE	CHK	ANG	±7'30"	FINISH		PREV	
THIS DRAWING IN DESIGN AND DETAIL IS OUR PROPERTY AND MUST NOT BE USED EXCEPT IN CONNECTION WITH OUR WORK ALL RIGHTS OF DESIGN AND INVENTION ARE RESERVED THIS IS AN ELECTRONICALLY GENERATED DOCUMENT - DO NOT SCALE THIS PRINT				RFP	07-19-2007	CAD FILE 004172-01ME		SIZE	DRAWING NO. PAGE 1 OF 1
				DIST	LB			A	004172-01ME