

# PRODUCT INFORMATION PACKET

Model No: 286THFNA14538  
Catalog No: 286THFNA14538  
30,1800,TEFC,286T,3/60/460

Regal and are trademarks of Regal Rexnord Corporation or one of its affiliated companies.  
©2022 Regal Rexnord Corporation, All Rights Reserved. MC017097E



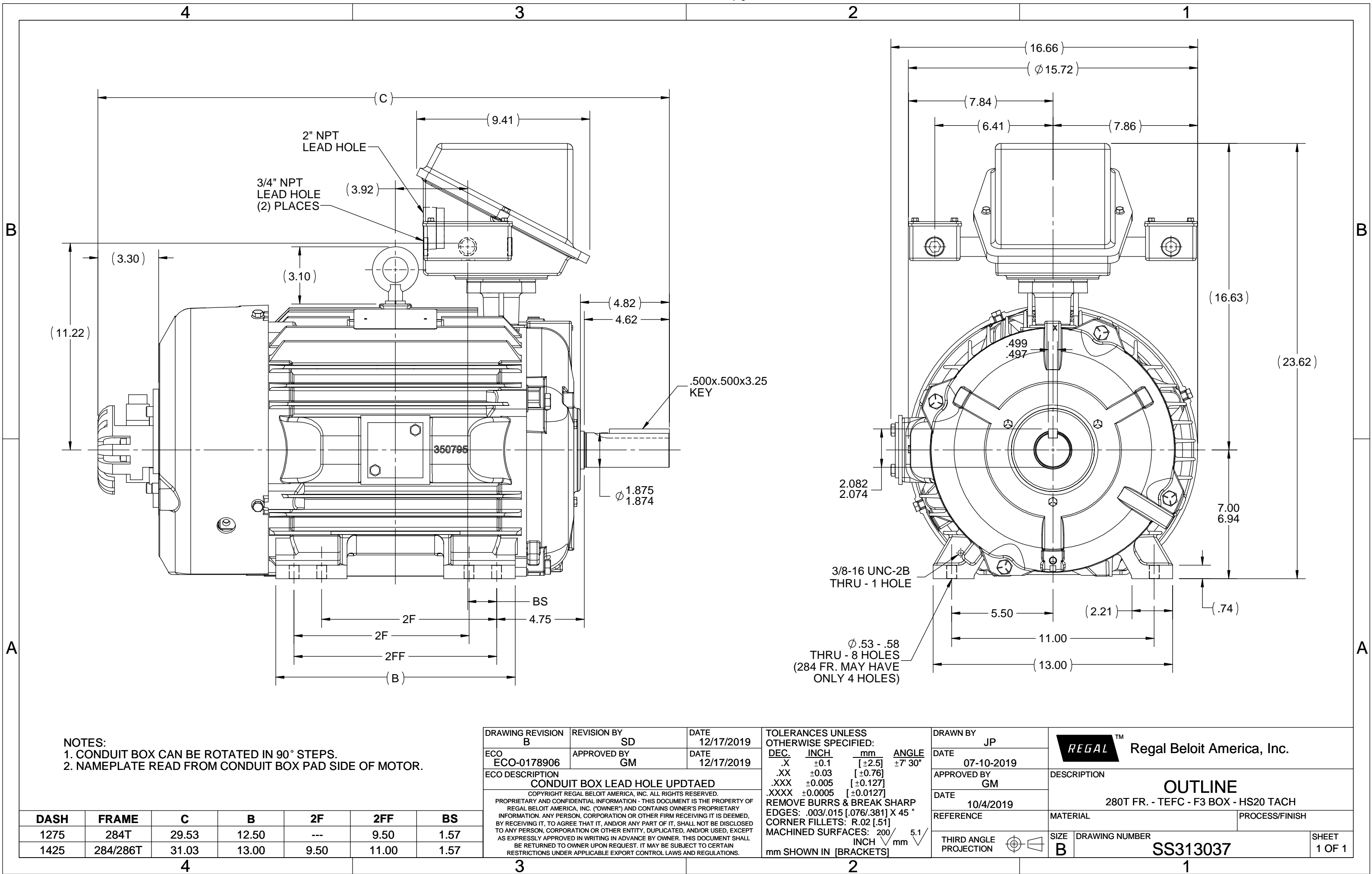
## Nameplate Specifications

Output HP	30 Hp	Output KW	22.4 kW
Frequency	60 Hz	Voltage	460 V
Current	38.5 A	Speed	1776 rpm
Service Factor	1.15	Phase	3
Efficiency	93 %	Power Factor	78.5
Duty	Continuous	Insulation Class	F
Design Code	INV	KVA Code	J
Frame	286T	Enclosure	Totally Enclosed Fan Cooled
Thermal Protection	No Protection	Ambient Temperature	45 °C
Drive End Bearing Size	6311	Opp Drive End Bearing Size	6210
UL	Recognized	CSA	Y
CE	Y	IP Code	56
Number of Speeds	1		

## Technical Specifications

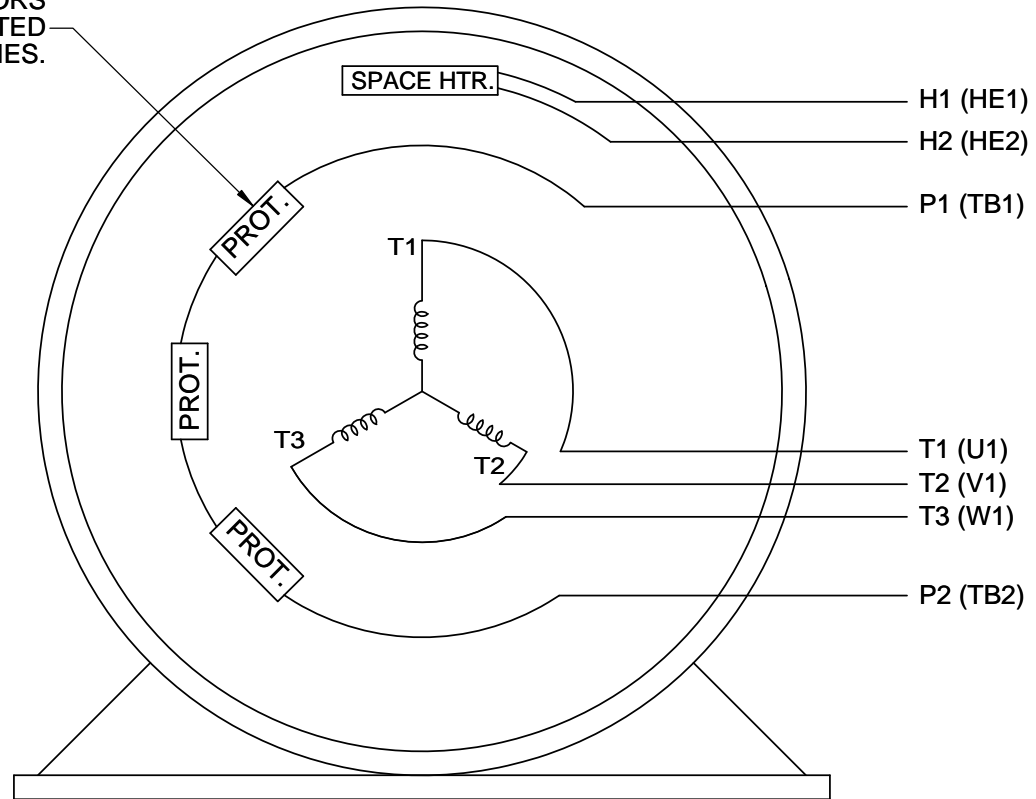
Electrical Type	Squirrel Cage Inverter Duty	Starting Method	Inverter Only
Poles	4	Rotation	Reversible
Resistance Main	.17 Ohms	Mounting	Rigid Base
Motor Orientation	Horizontal	Drive End Bearing	Ball
Opp Drive End Bearing	Ball	Frame Material	Cast Iron
Shaft Type	T	Assembly/Box Mounting	F3
Inverter Load	CONSTANT 2000:1		
Outline Drawing	SS313037-1425	Connection Drawing	EE7300AK

This is an uncontrolled document once printed or downloaded and is subject to change without notice. Date Created:09/02/2022



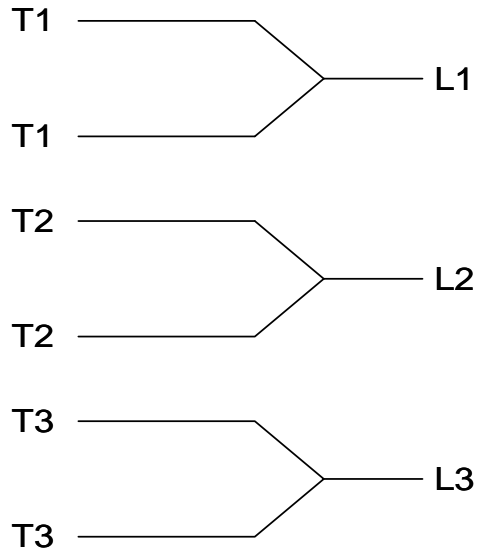
## P1 AND P2 PROTECTORS TO VOLTAGE CONTROL

PROTECTOR  
CONNECTED  
IN SERIES.





VIEW OF TERMINAL END

### IF MOTOR OR GENERATOR HAS 6 LEADS



# A-9806 DECAL

DRAWING REVISION J		REVISION BY J. OTTO		DATE 04-13-2017	
ECO ECO-0121568		APPROVED BY T. VUE		DATE 04-18-2017	
ECO DESCRIPTION					
ADDED IEC NOTATIONS					
COPYRIGHT REGAL BELLOIT AMERICA, INC. ALL RIGHTS RESERVED. PROPRIETARY AND CONFIDENTIAL INFORMATION - THIS DOCUMENT IS THE PROPERTY OF REGAL BELLOIT AMERICA, INC. ("OWNER") AND CONTAINS OWNER'S PROPRIETARY INFORMATION. ANY PERSON, CORPORATION OR OTHER FIRM RECEIVING IT IS DEEMED, BY RECEIVING IT, TO AGREE THAT IT, AND/OR ANY PART OF IT, SHALL NOT BE DISCLOSED TO ANY PERSON, CORPORATION OR OTHER ENTITY, DUPLICATED, AND/OR USED, EXCEPT AS EXPRESSLY APPROVED IN WRITING IN ADVANCE BY OWNER. THIS DOCUMENT SHALL BE RETURNED TO OWNER UPON REQUEST. IT MAY BE SUBJECT TO CERTAIN RESTRICTIONS UNDER APPLICABLE EXPORT CONTROL LAWS AND REGULATIONS.					
TOLERANCES UNLESS OTHERWISE SPECIFIED: DEC. INCH mm ANGLE .X ±0.1 [±2.5] ±7' 30" .XX ±0.02 [±0.51] XXX ±0.005 [±0.127] .XXXX ±0.0005 [±0.0127]			REMOVE BURRS & BREAK SHARP EDGES: .003/.015 [.076/.381] CORNER FILLETS: .02 [.51] MACHINED SURFACES: 200 INCH 5.1 mm mm SHOWN IN [BRACKETS]		
DRAWN BY MJD			 Regal Beloit America, Inc.		
DATE 06-24-2014			DESCRIPTION		
APPROVED BY TB			<b>CONN DIAGRAM-INTERNAL</b> SINGLE VOLT-3Ø MOTOR		
DATE 07-06-1998					
REFERENCE			MATERIAL		PROCESS/FINISH
THIRD ANGLE PROJECTION 			SIZE A	DRAWING NUMBER EE7300AK	SHEET 1 OF 1