

PRODUCT INFORMATION PACKET

Model No: 284UTFPA4026

Catalog No: P440

Automotive Duty Motor, 15 HP, 3 Ph, 60 Hz, 460 V, 1800 RPM, 284U Frame, TEFC



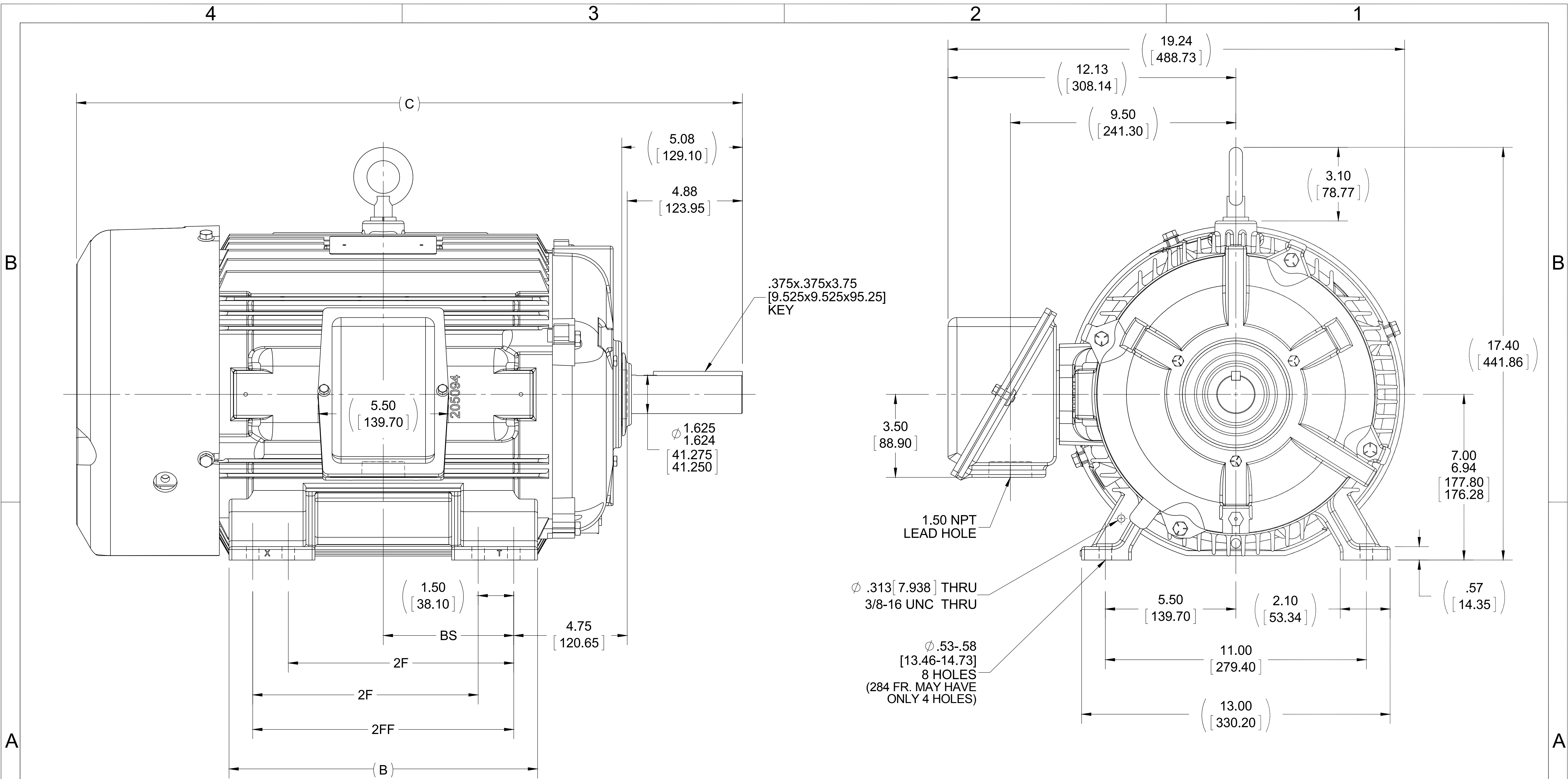
Regal and are trademarks of Regal Rexnord Corporation or one of its affiliated companies.
©2022 Regal Rexnord Corporation, All Rights Reserved. MC017097E

Nameplate Specifications

| | | | |
|------------------------|----------------------|----------------------------|------------------------------------|
| Output HP | 15 Hp | Output KW | 11.2 kW |
| Frequency | 60 Hz | Voltage | 460 V |
| Current | 18.0 A | Speed | 1770 rpm |
| Service Factor | 1 | Phase | 3 |
| Efficiency | 92.4 % | Power Factor | 85 |
| Duty | Continuous | Insulation Class | F |
| Design Code | B | KVA Code | F |
| Frame | 284U | Enclosure | Totally Enclosed Fan Cooled |
| Thermal Protection | No Protection | Ambient Temperature | 65 °C |
| Drive End Bearing Size | 6311 | Opp Drive End Bearing Size | 6210 |
| UL | Recognized | CSA | Y |
| CE | Y | IP Code | 43 |
| Number of Speeds | 1 | | |

Technical Specifications

| | | | |
|-----------------------|------------------------------------|-----------------------|------------------------|
| Electrical Type | Squirrel Cage Induction Run | Starting Method | Across The Line |
| Poles | 4 | Rotation | Reversible |
| Resistance Main | .629 Ohms | Mounting | Rigid Base |
| Motor Orientation | Horizontal | Drive End Bearing | Ball |
| Opp Drive End Bearing | Ball | Frame Material | Cast Iron |
| Shaft Type | U | Overall Length | 26.56 in |
| Frame Length | 12.75 in | Shaft Diameter | 1.625 in |
| Shaft Extension | 5.08 in | Assembly/Box Mounting | F1/F2 Capable |
| Outline Drawing | B-SS311055-1275 | Connection Drawing | A-EE7300 |



- NOTES:
 1. CONDUIT BOX CAN BE ROTATED IN 90° STEPS.
 2. CONDUIT BOX CAN BE MOUNTED ON OPPOSITE SIDE BY REMOVING BRACKETS AND TURNING FRAME 180°.
 3. NAMEPLATES TO BE READ FROM CONDUIT BOX SIDE OF MOTOR.

| DASH | FRAME | C | B | 2F | 2FF | BS |
|------|----------|-------------------|-------------------|------------------|-------------------|------------------|
| 1275 | 284U | 26.56 [674.62] | 11.50 [292.10] | 9.50 [241.30] | --- | 4.75 [120.65] |
| 1425 | 284/286U | 28.06 [712.72] | 13.00 [330.20] | 9.50 [241.30] | 11.00 [279.40] | 5.50 [139.70] |

| | | |
|---|---------------------|--------------------|
| DRAWING REVISION E | REVISION BY LPC | DATE 08-20-2015 |
| ECO ECO-0083624 | APPROVED BY TVUE | DATE 08-20-2015 |
| ECO DESCRIPTION UPDATED TITLE BLOCK & TO CURRENT STD'S | | |
| <small>COPYRIGHT REGAL BELOIT AMERICA, INC. ALL RIGHTS RESERVED. PROPRIETARY AND CONFIDENTIAL INFORMATION - THIS DOCUMENT IS THE PROPERTY OF REGAL BELOIT AMERICA, INC. ("OWNER") AND CONTAINS OWNER'S PROPRIETARY INFORMATION. ANY PERSON, CORPORATION OR OTHER FIRM RECEIVING IT IS DEEMED, BY RECEIVING IT, TO AGREE THAT IT, AND/OR ANY PART OF IT, SHALL NOT BE DISCLOSED TO ANY PERSON, CORPORATION OR OTHER ENTITY, DUPLICATED, AND/OR USED, EXCEPT AS EXPRESSLY APPROVED IN WRITING IN ADVANCE BY OWNER. THIS DOCUMENT SHALL BE RETURNED TO OWNER UPON REQUEST. IT MAY BE SUBJECT TO CERTAIN RESTRICTIONS UNDER APPLICABLE EXPORT CONTROL LAWS AND REGULATIONS.</small> | | |

TOLERANCES UNLESS OTHERWISE SPECIFIED:

| DEC. | INCH | mm | ANGLE |
|-------|---------|-----------|---------|
| .X | ±0.1 | [±2.5] | ±7° 30" |
| .XX | ±0.03 | [±0.76] | |
| .XXX | ±0.005 | [±0.127] | |
| .XXXX | ±0.0005 | [±0.0127] | |

REMOVE BURRS & BREAK SHARP EDGES: .003/.015 [0.076/.381] X 45°
 CORNER FILLETS: R.02 [0.51]
 MACHINED SURFACES: 200 INCH/mm 5.1
 mm SHOWN IN [BRACKETS]

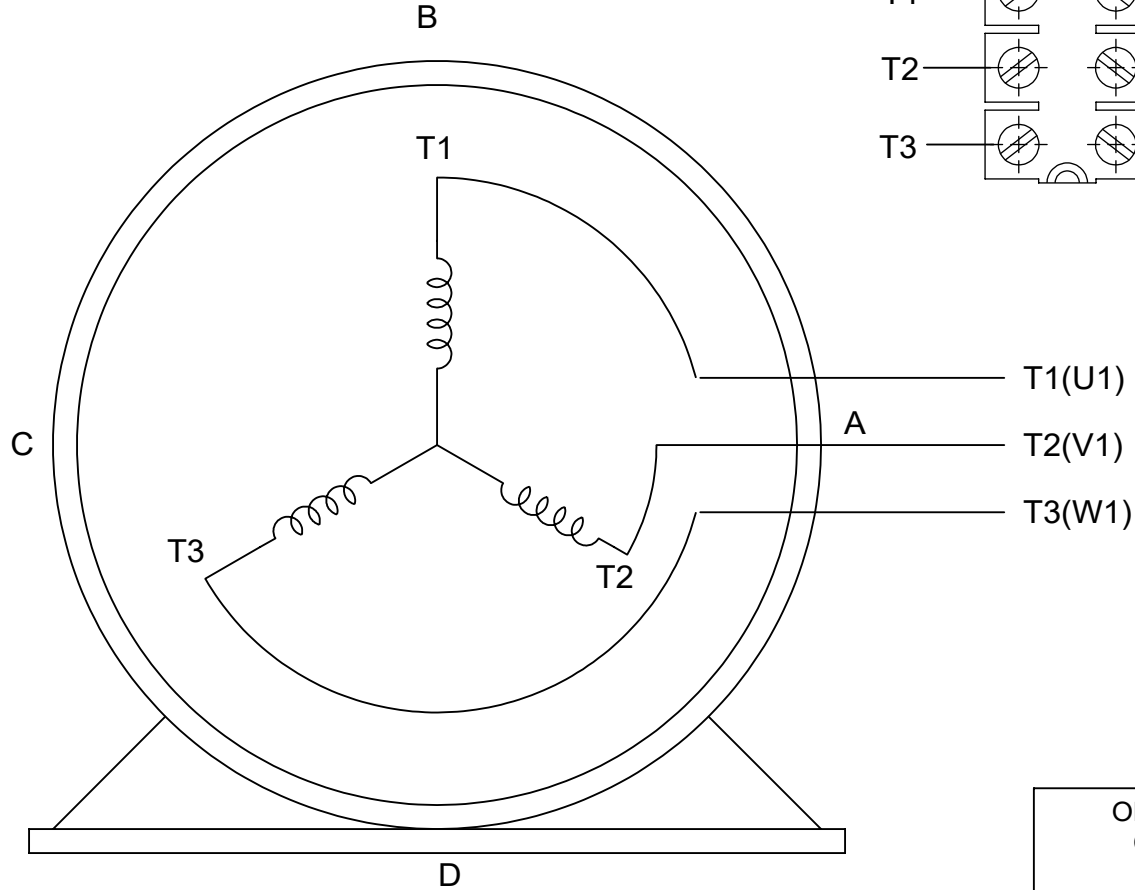
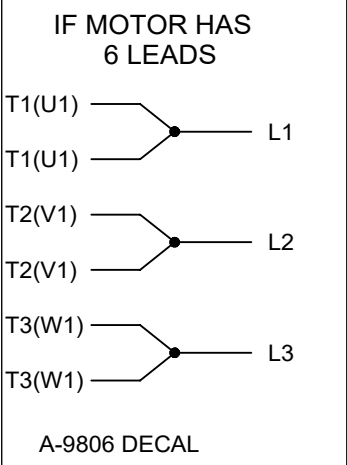
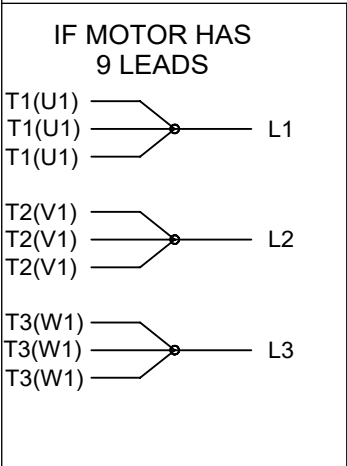
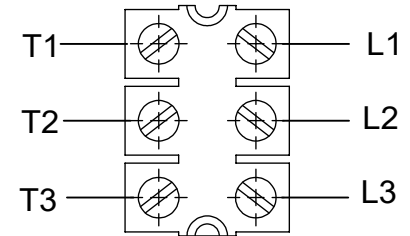
| |
|------------------------|
| DRAWN BY KL |
| DATE 04-12-2001 |
| APPROVED BY JES |
| DATE 04-12-2001 |
| REFERENCE |
| THIRD ANGLE PROJECTION |

| | |
|--|-----------------------------------|
| REGAL ™ Regal Beloit America, Inc. | |
| DESCRIPTION OUTLINE | |
| 280U FR. - TEFC - TFPA - STD. - 11.00 LAM. - CAST C' BOX | |
| MATERIAL | PROCESS/FINISH |
| SIZE B | DRAWING NUMBER SS311055 |
| | SHEET 1 OF 1 |

THREE PHASE - SINGLE VOLTAGE
MOTOR - CONDUIT BOX @ 'A'

TERMINAL BLOCK WHEN SPECIFIED

TO REVERSE ROTATION:
INTERCHANGE ANY TWO LINE
LEAD CONNECTIONS



VIEW OF TERMINAL END

OPTIONAL CORD CONNECTION

| | |
|----|-------|
| L1 | WHITE |
| L2 | RED |
| L3 | BLACK |

| | | |
|---|-------------------|-------------------------------|
| DRAWING REVISION AC | REVISION BY BS | REV DATE/© DATE 26/07/2022 |
| REQUEST NUMBER CR-0010402 | APPROVED BY SN | DATE 26/07/2022 |
| REQUEST NUMBER DESCRIPTION DRAWING UPDATED | | |
| <small>COPYRIGHT (PER REVISION DATE) REGAL BELOIT AMERICA, INC. ALL RIGHTS RESERVED. PROPRIETARY AND CONFIDENTIAL INFORMATION - THIS DOCUMENT IS THE PROPERTY OF REGAL BELOIT AMERICA, INC. ("OWNER") AND CONTAINS OWNER'S PROPRIETARY INFORMATION. ANY PERSON, CORPORATION OR OTHER FIRM RECEIVING IT IS DEEMED, BY RECEIVING IT, TO AGREE THAT IT, AND/OR ANY PART OF IT, SHALL NOT BE DISCLOSED TO ANY PERSON, CORPORATION OR OTHER ENTITY, DUPLICATED, AND/OR USED, EXCEPT AS EXPRESSLY APPROVED IN WRITING IN ADVANCE BY OWNER. THIS DOCUMENT SHALL BE RETURNED TO OWNER UPON REQUEST. IT MAY BE SUBJECT TO CERTAIN RESTRICTIONS UNDER APPLICABLE EXPORT CONTROL LAWS AND REGULATIONS.</small> | | |

PRIMARY DIMENSIONS ARE INCH
mm DIMENSIONS IN [BRACKETS]
ARE FOR REFERENCE ONLY

| |
|------------------------|
| DRAWN BY DA |
| DATE 03-26-1993 |
| APPROVED BY TB |
| DATE 03-26-1993 |
| REFERENCE |
| THIRD ANGLE PROJECTION |

| | | | |
|--|---------------------------------|----------------------------|-----------------|
| | | Regal Beloit America, Inc. | |
| DESCRIPTION CONNECTION DIAGRAM EXTERNAL - SINGLE VOLTAGE - 3Ø MOTOR | | | |
| MATERIAL | | PROCESS/FINISH | |
| SIZE A | DRAWING NUMBER EE7300 | | SHEET 1 OF 1 |

CERTIFICATION DATA SHEET

Model#: 284UTFPA4026 AB
CONN. DIAGRAM: A-EE7300
OUTLINE: B-SS311055-1275

WINDING#: K2564174 R1 7
ASSEMBLY: F1/F2 CAPABLE

TYPICAL MOTOR PERFORMANCE DATA

| HP | KW | SYNC. RPM | F.L. RPM | FRAME | ENCLOSURE | KVA CODE | DESIGN |
|----|------|-----------|----------|-------|-----------|----------|--------|
| 15 | 11.2 | 1800 | 1770 | 284U | TEFC | F | B |

| PH | Hz | VOLTS | FL AMPS | START TYPE | DUTY | INSL | S.F | AMB°C | ELEVATION |
|----|----|-------|---------|-----------------|------------|------|-----|-------|-----------|
| 3 | 60 | 460 | 18 | ACROSS THE LINE | CONTINUOUS | F3 | 1.0 | 65 | 3300 |

| FULL LOAD EFF: 92.4 | 3/4 LOAD EFF: 93 | 1/2 LOAD EFF: 92.4 | GTD. EFF | ELEC. TYPE | NO LOAD AMPS |
|---------------------|------------------|--------------------|----------|-----------------|--------------|
| FULL LOAD PF: 85 | 3/4 LOAD PF: 82 | 1/2 LOAD PF: 74 | 91 | SQ CAGE IND RUN | 6 |

| F.L. TORQUE | LOCKED ROTOR AMPS | L.R. TORQUE | B.D. TORQUE | F.L. RISE°C |
|-------------|-------------------|--------------|---------------|-------------|
| 44.5 LB-FT | 100 | 75 LB-FT 169 | 110 LB-FT 247 | 40 |

| SOUND PRESSURE @ 3 FT. | SOUND POWER | ROTOR WK^2 | MAX. WK^2 | SAFE STALL TIME | STARTS /HOUR | APPROX. MOTOR WGT |
|------------------------|-------------|-------------|-----------|-----------------|--------------|-------------------|
| 65 dBA | 75 dBA | 2.7 LB-FT^2 | - LB-FT^2 | 25 SEC. | - | 475 LBS. |

***** SUPPLEMENTAL INFORMATION *****

| DE BRACKET TYPE | ODE BRACKET TYPE | MOUNT TYPE | ORIENTATION | SEVERE DUTY | HAZARDOUS LOCATION | DRIP COVER | SCREENS | PAINT |
|-----------------|------------------|------------|-------------|-------------|--------------------|------------|---------|---------------|
| STANDARD | STANDARD | RIGID | HORIZONTAL | FALSE | NONE | FALSE | NONE | BLUE (ENAMEL) |

| BEARINGS | | GREASE | SHAFT TYPE | SPECIAL DE | SPECIAL ODE | SHAFT MATERIAL | FRAME MATERIAL |
|----------|------|------------|------------|------------|-------------|-------------------------|----------------|
| DE | OPE | | | | | | |
| BALL | BALL | POLYREX EM | U | NONE | NONE | 1045 HOT ROLLED (C-204) | CAST IRON |
| 6311 | 6210 | | | | | | |

| THERMO-PROTECTORS | | | | THERMISTORS | CONTROL | SPACE /n HEATERS |
|-------------------|------------|----------|----------|-------------|---------|------------------|
| THERMOSTATS | PROTECTORS | WDG RTDs | BRG RTDs | | | |
| NONE | NOT | NONE | NONE | NONE | FALSE | NONE VOLTS |

If Inverter equals NONE, contact factory for further information

*
N
O
T
E
S
*

| |
|---------------------------|
| INVERTER TORQUE: NONE |
| INV. HP SPEED RANGE: NONE |
| ENCODER: NONE |
| NONE NONE |
| NONE NONE PPR |
| BRAKE: NONE NONE |
| NONE P/N NONE |
| NONE NONE |
| NONE FT-LB NONE V NONE Hz |

DATE: 06/27/2017 01:37:27 AM
 FORM 3531 REV.3 02/07/99
 ** Subject to change without notice.

Data Sheet

Date: 29-06-2017
 Customer: _____
 Attention: _____
 Submitted by: FAREEDA DUDEKULA



284UTFPA4026

Submittal

Data @ 460 V

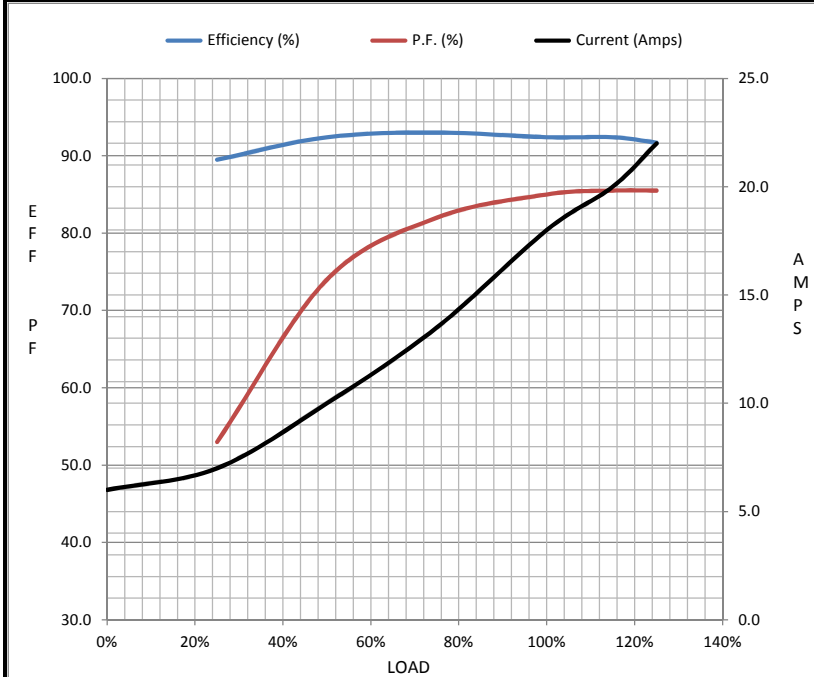
Motor Load Data

| Load | 0% | 25% | 50% | 75% | 100% | 115% | 125% | LR |
|----------------|------|------|------|------|------|-------|------|------|
| Current (Amps) | 6.0 | 7.0 | 10.0 | 13.5 | 18.0 | 20.0 | 22.0 | 100 |
| Torque (ft-lb) | 0.00 | 11.0 | 22.0 | 33.5 | 44.5 | 51.5 | 56.0 | 75.0 |
| RPM | 1800 | 1790 | 1785 | 1775 | 1770 | 1,765 | 1760 | 0 |
| Efficiency (%) | | 89.5 | 92.4 | 93.0 | 92.4 | 92.4 | 91.7 | |
| P.F. (%) | 6.0 | 53.0 | 74.0 | 82.0 | 85.0 | 85.5 | 85.5 | 36.0 |

Motor Speed Data

| | LR | Pull-Up | BD | Rated | Idle |
|----------------|------|---------|------|-------|------|
| Speed (RPM) | 0 | 900 | 1640 | 1770 | 1800 |
| Current (Amps) | 100 | 90.0 | 65.0 | 18.0 | 6.0 |
| Torque (ft-lb) | 75.0 | 68.0 | 110 | 44.5 | 0.00 |

| Information Block | | | | |
|-----------------------------|-------------------------|--------|--------|---------|
| HP | 15.0 | | | |
| Sync. RPM | 1800 | | | |
| Frame | 284 | | | |
| Enclosure | TEFC | | | |
| Construction | TFP | | | |
| Voltage | 460 V | | | |
| Frequency | 60 Hz | | | |
| Design | B | | | |
| LR Code letter | F | | | |
| Service Factor | 1.15 | | | |
| Temp Rise @ FL | 40 ° C | | | |
| Duty | CONT | | | |
| Ambient | 40 ° C | | | |
| Elevation | 1,000 feet | | | |
| Rotor/Shaft wk ² | 2.70 Lb-Ft ² | | | |
| Ref Wdg | K2564174 R1 | | | |
| Sound Pressure @ 1M | 65 dBA | | | |
| VFD Rating | NONE | | | |
| Outline Dwg | B-SS311055-1275 | | | |
| Conn. Diag | A-EE7300 | | | |
| Additional Specifications: | | | | |
| 0 | | | | |
| 365THFS8036 | | | | |
| EQUIV CKT (OHMS / PHASE) | | | | |
| R1 | R2 | X1 | X2 | Xm |
| 0.3650 | 0.2820 | 1.4690 | 2.2870 | 44.0370 |



Speed - Torque Curve

