

PRODUCT INFORMATION PACKET



Model No: 284TTTNA14079
Catalog No: 284TTTNA14079
15,1200,TEAO,284T,3/60/460YD

Regal and Marathon are trademarks of Regal Rexnord Corporation or one of its affiliated companies.
©2025 Regal Rexnord Corporation, All Rights Reserved. MC017097E



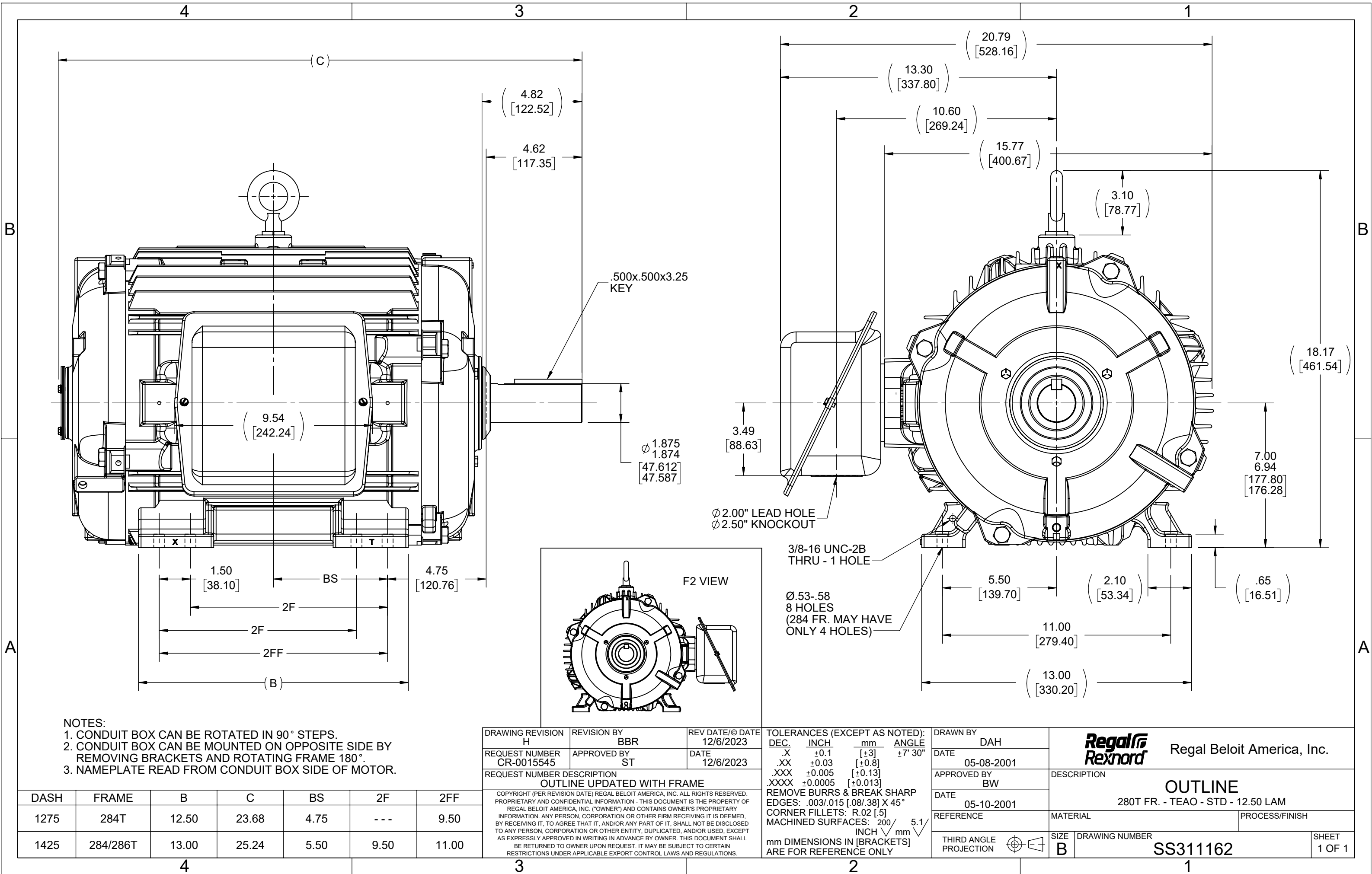
Nameplate Specifications

| | | | |
|------------------------|---------------|----------------------------|---------------------------|
| Phase | 3 | Output HP | 15 Hp |
| Output KW | 11.2 kW | Voltage | 460 V |
| Speed | 1175 r/min | Service Factor | 1.15 |
| Frame | 284T | Enclosure | Totally Enclosed Air Over |
| Thermal Protection | No Protection | Efficiency | 90.2 % |
| Ambient Temperature | 40 °C | Frequency | 60 Hz |
| Current | 20.0 A | Power Factor | 79 |
| Duty | Continuous | Insulation Class | H |
| Design Code | B | KVA Code | G |
| Drive End Bearing Size | 311 | Opp Drive End Bearing Size | 210 |
| UL | Recognized | CSA | Y |
| CE | N | IP Code | 43 |
| Number of Speeds | 1 | | |

Technical Specifications

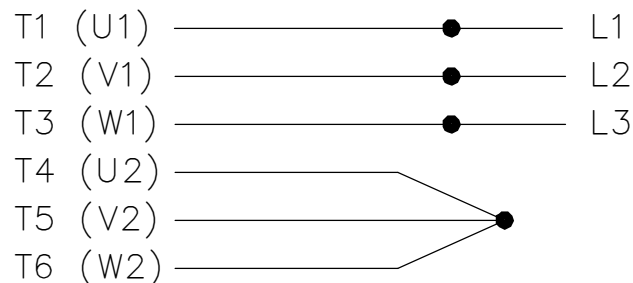
| | | | |
|-----------------------|-----------------------------|-----------------------|---------------------|
| Electrical Type | Squirrel Cage Induction Run | Starting Method | Wye Start Delta Run |
| Poles | 6 | Rotation | Reversible |
| Resistance Main | .508 O | Mounting | Rigid Base |
| Motor Orientation | Horizontal | Drive End Bearing | Ball |
| Opp Drive End Bearing | Ball | Frame Material | Cast Iron |
| Shaft Type | T | Assembly/Box Mounting | F1/F2 CAPABLE |
| Outline Drawing | B-SS311162-1275 | Connection Drawing | A-EE7340 |

This is an uncontrolled document once printed or downloaded and is subject to change without notice. Date Created:04/08/2025

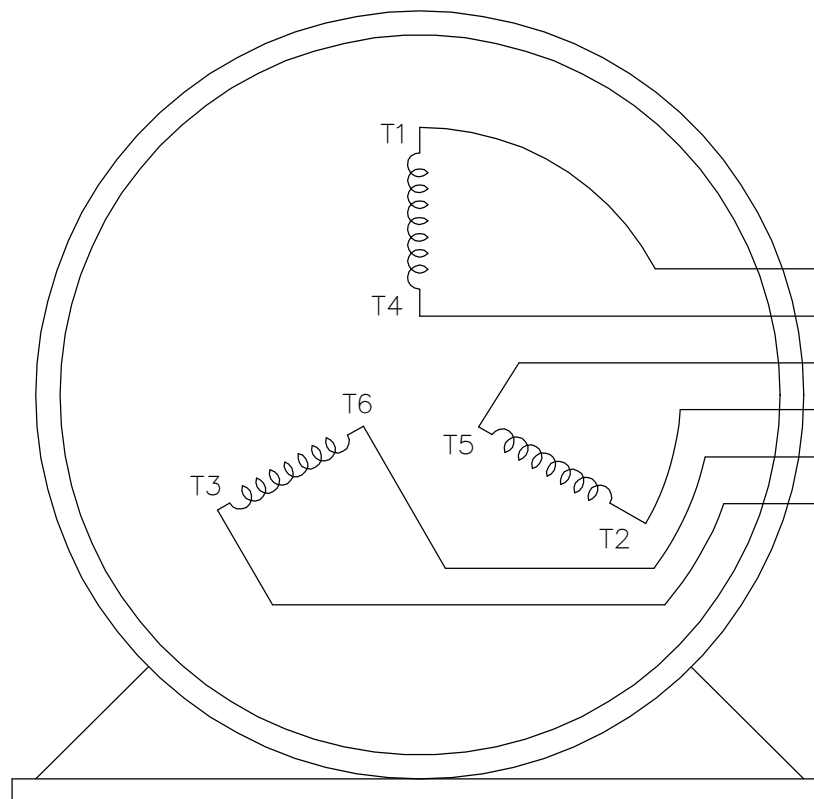
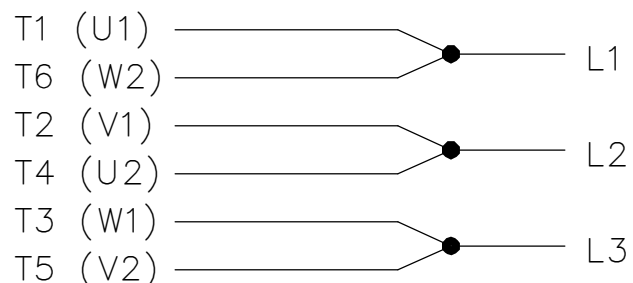


THREE PHASE
WYE START DELTA RUN

START




RUN



VIEW OF TERMINAL END

T1 (U1)
T4 (U2)
T5 (V2)
T2 (V1)
T6 (W2)
T3 (W1)

NOTE:
IEC LEAD MARKINGS ARE NOTED
IN PARANTHESES

| | | | | | | | |
|--|--------------------|-------------------------------|---|--------------------|---|-----------------|--|
| DRAWING REVISION F | REVISION BY RTT | REV DATE/© DATE 05-29-2019 | TOLERANCES (EXCEPT AS NOTED): DEC. INCH mm ANGLE .X ±0.1 [±3] ±7° 30" .XX ±0.02 [±0.5] .XXX ±0.005 [±0.13] .XXXX ±0.0005 [±0.013] REMOVE BURRS & BREAK SHARP EDGES: .003/.015 [.08/.38] X 45 ° CORNER FILLETS: R.02 [.5] MACHINED SURFACES: 200/ 5.1 INCH ✓ mm ✓ mm DIMENSIONS IN [BRACKETS] ARE FOR REFERENCE ONLY | DRAWN BY LZ | <div><div>REGAL®</div><div>Regal Beloit America, Inc.</div></div> | | |
| ECO ECO-0167538 | APPROVED BY JWA | DATE 05-29-2019 | | DATE 01-06-1994 | DESCRIPTION <div>CONNECTION DIAGRAM</div> <div>3<MOD-DIAM> - WYE START DELTA RUN</div> | | |
| ECO DESCRIPTION UPDATED TITLE BLOCK | | | | APPROVED BY GK | | | |
| COPYRIGHT (PER REVISION DATE) REGAL BELOIT AMERICA, INC. ALL RIGHTS RESERVED. PROPRIETARY AND CONFIDENTIAL INFORMATION - THIS DOCUMENT IS THE PROPERTY OF REGAL BELOIT AMERICA, INC. ("OWNER") AND CONTAINS OWNER'S PROPRIETARY INFORMATION. ANY PERSON, CORPORATION OR OTHER FIRM RECEIVING IT IS DEEMED, BY RECEIVING IT, TO AGREE THAT IT, AND/OR ANY PART OF IT, SHALL NOT BE DISCLOSED TO ANY PERSON, CORPORATION OR OTHER ENTITY, DUPLICATED, AND/OR USED, EXCEPT AS EXPRESSLY APPROVED IN WRITING IN ADVANCE BY OWNER. THIS DOCUMENT SHALL BE RETURNED TO OWNER UPON REQUEST. IT MAY BE SUBJECT TO CERTAIN RESTRICTIONS UNDER APPLICABLE EXPORT CONTROL LAWS AND REGULATIONS. | | | | DATE 01-18-1994 | MATERIALPROCESS/FINISH | | |
| | | | | REFERENCE | | | |
| | | | THIRD ANGLE PROJECTION  | SIZE A | DRAWING NUMBER EE7340 | SHEET 1 OF 1 | |