

PRODUCT INFORMATION PACKET



Model No: 284TTGN16566
Catalog No: 284TTGN16566
25,1800,EPFC,284TC,3/60/575

Regal and Marathon are trademarks of Regal Rexnord Corporation or one of its affiliated companies.
©2023 Regal Rexnord Corporation, All Rights Reserved. MC017097E



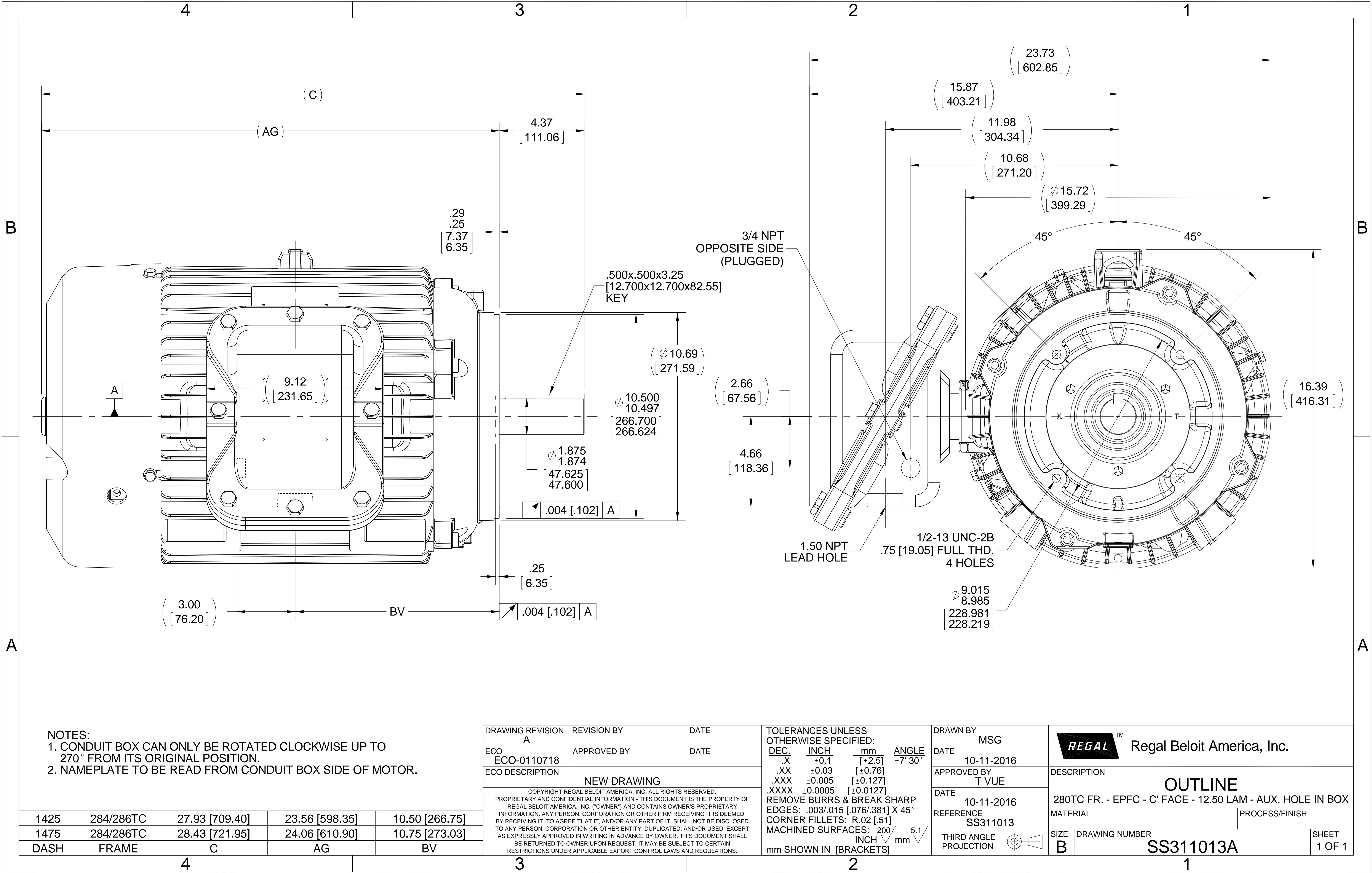
Nameplate Specifications

Phase	3	Output HP	25 Hp
Output KW	18.7 kW	Voltage	575 V
Speed	1772 rpm	Service Factor	1.15
Frame	284TC	Enclosure	Explosion Proof Fan cooled
Thermal Protection	Thermostat	Efficiency	93.6 %
Ambient Temperature	40 °C	Frequency	60 Hz
Current	24.8 A	Power Factor	81
Duty	Continuous	Insulation Class	F
Design Code	B	KVA Code	G
Drive End Bearing Size	6311	Opp Drive End Bearing Size	6210
UL	No	CSA	N
CE	N	IP Code	54
Number of Speeds	1	Hazardous Location	EXP PROOF CL I GR C&D CL II GR F&G T3B

Technical Specifications

Electrical Type	Squirrel Cage Induction Run	Starting Method	Across The Line
Poles	4	Rotation	Reversible
Resistance Main	.271 Ohms	Mounting	Round
Motor Orientation	Horizontal	Drive End Bearing	Ball
Opp Drive End Bearing	Ball	Frame Material	Cast Iron
Shaft Type	T	Assembly/Box Mounting	F1 ONLY
Outline Drawing	B-SS311013A-1425	Connection Drawing	A-EE7300AK

This is an uncontrolled document once printed or downloaded and is subject to change without notice. Date Created:08/24/2023



NOTES:
1. CONDUIT BOX CAN ONLY BE ROTATED CLOCKWISE UP TO 270° FROM ITS ORIGINAL POSITION.
2. NAMEPLATE TO BE READ FROM CONDUIT BOX SIDE OF MOTOR.

1425	284/286TC	27.93 [709.40]	23.56 [598.35]	10.50 [266.75]
1475	284/286TC	28.43 [721.95]	24.06 [610.90]	10.75 [273.03]
DASH	FRAME	C	AG	BV

DRAWING REVISION A	REVISION BY	DATE
ECO ECO-0110718	APPROVED BY	DATE
ECO DESCRIPTION NEW DRAWING		
COPYRIGHT REGAL BELOIT AMERICA, INC. ALL RIGHTS RESERVED. PROPRIETARY AND CONFIDENTIAL INFORMATION - THIS DOCUMENT IS THE PROPERTY OF REGAL BELOIT AMERICA, INC. ("OWNER") AND CONTAINS OWNER'S PROPRIETARY INFORMATION. ANY PERSON, CORPORATION OR OTHER FIRM RECEIVING IT IS DEEMED, BY RECEIVING IT, TO AGREE THAT IT, AND/OR ANY PART OF IT, SHALL NOT BE DISCLOSED TO ANY PERSON, CORPORATION OR OTHER ENTITY, DUPLICATED, AND/OR USED, EXCEPT AS EXPRESSLY APPROVED IN WRITING IN ADVANCE BY OWNER. THIS DOCUMENT SHALL BE RETURNED TO OWNER UPON REQUEST. IT MAY BE SUBJECT TO CERTAIN RESTRICTIONS UNDER APPLICABLE EXPORT CONTROL LAWS AND REGULATIONS.		

TOLERANCES UNLESS OTHERWISE SPECIFIED:			
DEC.	INCH	mm	ANGLE
.X	±0.1	[±2.5]	±7° 30"
.XX	±0.03	[±0.76]	
.XXX	±0.005	[±0.127]	
.XXXX	±0.0005	[±0.0127]	
REMOVE BURRS & BREAK SHARP EDGES: .003/.015 [0.076/.381] X 45° CORNER FILLETS: R.02 [.51] MACHINED SURFACES: 200 INCH/mm 5.1			
mm SHOWN IN [BRACKETS]			

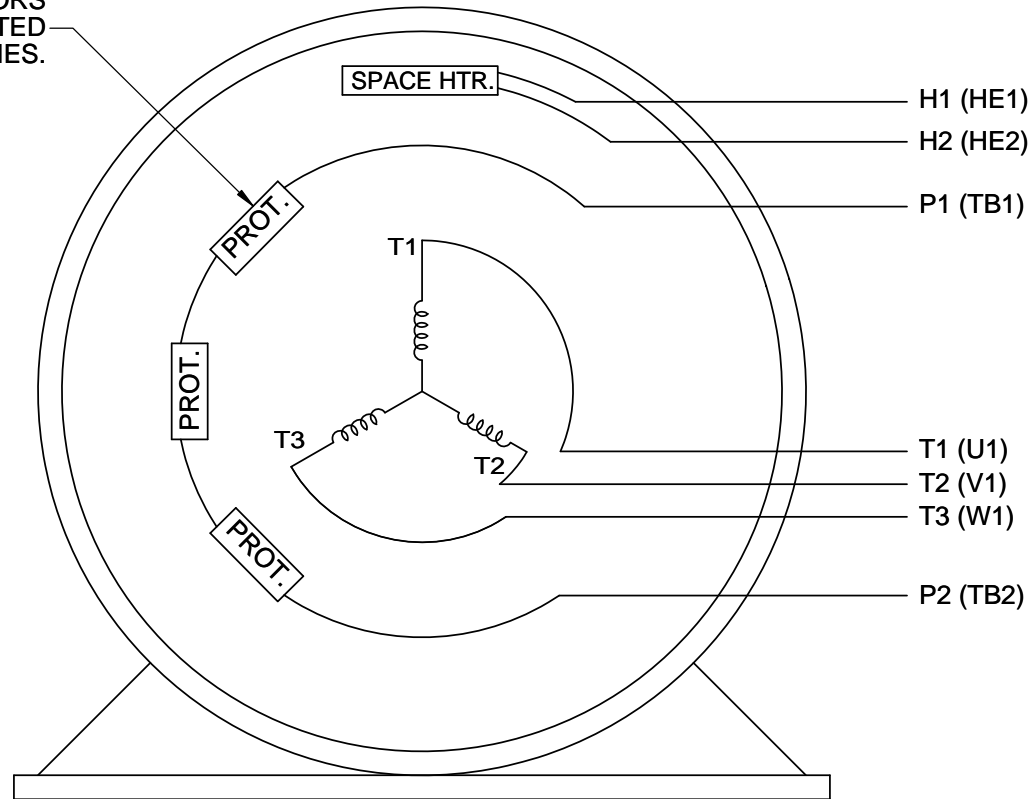
DRAWN BY MSG	DATE 10-11-2016
APPROVED BY T VUE	DATE 10-11-2016
REFERENCE SS311013	THIRD ANGLE PROJECTION

REGAL TM Regal Beloit America, Inc.	
DESCRIPTION OUTLINE	
280TC FR. - EPFC - C' FACE - 12.50 LAM - AUX. HOLE IN BOX	
MATERIAL	PROCESS/FINISH
SIZE B	DRAWING NUMBER SS311013A
SHEET 1 OF 1	

P1 AND P2 PROTECTORS TO VOLTAGE CONTROL

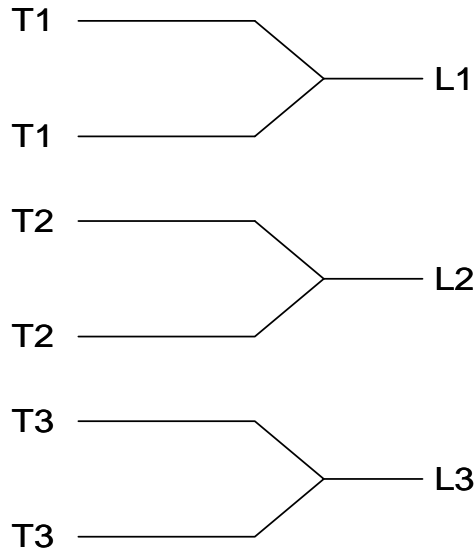
TO REVERSE ROTATION:
INTERCHANGE ANY TWO
LINE LEAD CONNECTIONS.

PROTECTORS
CONNECTED
IN SERIES.



VIEW OF TERMINAL END

IF MOTOR OR GENERATOR
HAS 6 LEADS



A-9806 DECAL

DRAWING REVISION J	REVISION BY J. OTTO	DATE 04-13-2017	TOLERANCES UNLESS OTHERWISE SPECIFIED: <div><div>DEC.</div><div>INCH</div><div>mm</div><div>ANGLE</div></div> <div><div>.X</div><div>±0.1</div><div>[±2.5]</div><div>±7° 30"</div></div> <div><div>.XX</div><div>±0.02</div><div>[±0.51]</div></div> <div><div>XXX</div><div>±0.005</div><div>[±0.127]</div></div> <div><div>.XXXX</div><div>±0.0005</div><div>[±0.0127]</div></div> <div>REMOVE BURRS & BREAK SHARP EDGES: .003/.015 [.076/.381] CORNER FILLETS: .02 [.51] MACHINED SURFACES: 200 INCH 5.1 mm mm SHOWN IN [BRACKETS]</div>				DRAWN BY MJD	<div><div>REGAL™</div><div>Regal Beloit America, Inc.</div></div>	
ECO ECO-0121568	APPROVED BY T. VUE	DATE 04-18-2017					DATE 06-24-2014		
ECO DESCRIPTION ADDED IEC NOTATIONS			DESCRIPTION CONN DIAGRAM-INTERNAL SINGLE VOLT-3Ø MOTOR						
COPYRIGHT REGAL BELOIT AMERICA, INC. ALL RIGHTS RESERVED. PROPRIETARY AND CONFIDENTIAL INFORMATION - THIS DOCUMENT IS THE PROPERTY OF REGAL BELOIT AMERICA, INC. ("OWNER") AND CONTAINS OWNER'S PROPRIETARY INFORMATION. ANY PERSON, CORPORATION OR OTHER FIRM RECEIVING IT IS DEEMED, BY RECEIVING IT, TO AGREE THAT IT, AND/OR ANY PART OF IT, SHALL NOT BE DISCLOSED TO ANY PERSON, CORPORATION OR OTHER ENTITY, DUPLICATED, AND/OR USED, EXCEPT AS EXPRESSLY APPROVED IN WRITING IN ADVANCE BY OWNER. THIS DOCUMENT SHALL BE RETURNED TO OWNER UPON REQUEST. IT MAY BE SUBJECT TO CERTAIN RESTRICTIONS UNDER APPLICABLE EXPORT CONTROL LAWS AND REGULATIONS.			APPROVED BY TB		MATERIAL		PROCESS/FINISH		
			DATE 07-06-1998						
			REFERENCE		SIZE A		DRAWING NUMBER EE7300AK		SHEET 1 OF 1
			THIRD ANGLE PROJECTION		