

# PRODUCT INFORMATION PACKET

**marathon®**  
Motors

Model No: 284TTGCD16550  
Catalog No: E547A-P  
25,1800,EPFC,284T,3/60/230/460



Regal and Marathon are trademarks of Regal Rexnord Corporation or one of its affiliated companies.  
©2023 Regal Rexnord Corporation, All Rights Reserved. MC017097E

**RegalRexnord**



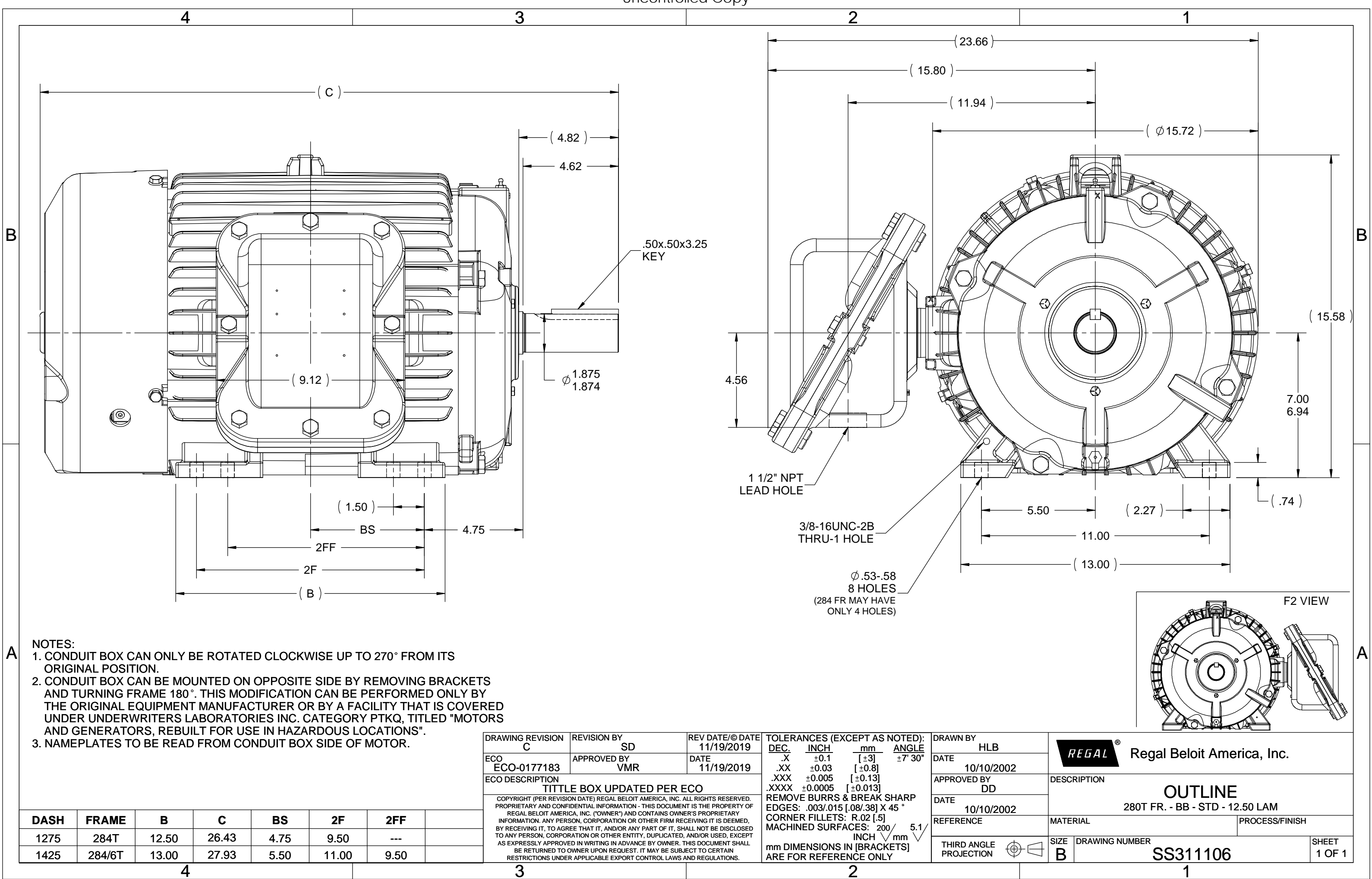
**Nameplate Specifications**

**Technical Specifications**

Outline Drawing	SS311106-1275	Connection Drawing	EE7308T
-----------------	---------------	--------------------	---------

---

This is an uncontrolled document once printed or downloaded and is subject to change without notice. Date Created:04/18/2023



## HIGH VOLTAGE



NOTE FOR FACTORY USE ONLY:  
 TO SURGE TEST FOR COMMON CONNECT:  
 HIGH VOLT: CONNECT P1 TO T1  
 THEN P2 TO L1  
 LOW VOLT: CONNECT P1 TO T1 & T7,  
 THEN P2 TO L1

## LOW VOLTAGE

THREE PHASE  
DUAL VOLTAGE MOTOR

## VIEW OF TERMINAL END

NOTE: LEAD'S COLOR CAN BE YELLOW OR WHITE FOR MT2 PLANT

DRAWING REVISION T	REVISION BY ZR	DATE 01-14-2019
ECO ECO-0159915	APPROVED BY DR	DATE 01-15-2019

ECO DESCRIPTION  
ADDED TERMINAL CONNECTION DIAGRAM

COPYRIGHT REGAL BELOIT AMERICA, INC. ALL RIGHTS RESERVED.  
 PROPRIETARY AND CONFIDENTIAL INFORMATION - THIS DOCUMENT IS THE PROPERTY OF  
 REGAL BELOIT AMERICA, INC. ("OWNER") AND CONTAINS OWNER'S PROPRIETARY  
 INFORMATION. ANY PERSON, CORPORATION OR OTHER FIRM RECEIVING IT IS DEEMED,  
 BY RECEIVING IT, TO AGREE THAT IT, AND/OR ANY PART OF IT, SHALL NOT BE DISCLOSED  
 TO ANY PERSON, CORPORATION OR OTHER ENTITY, DUPLICATED, AND/OR USED, EXCEPT  
 AS EXPRESSLY APPROVED IN WRITING IN ADVANCE BY OWNER. THIS DOCUMENT SHALL  
 BE RETURNED TO OWNER UPON REQUEST. IT MAY BE SUBJECT TO CERTAIN  
 RESTRICTIONS UNDER APPLICABLE EXPORT CONTROL LAWS AND REGULATIONS.

DRAWN BY  
SMC

DATE  
05-13-1992

APPROVED BY  
TB

DATE  
05-13-1992

REFERENCE  
EE7308/EE7300

THIRD ANGLE  
PROJECTION



Regal Beloit America, Inc.

## DESCRIPTION

**CONN DIAGRAM-INTERNAL**  
 3 PHASE - DUAL VOLTAGE MOTOR

MATERIAL

PROCESS/FINISH

SIZE  
A

DRAWING NUMBER

EE7308T

SHEET  
1 OF 1

# Data Sheet

Date: 1/23/2023  
Customer:   
Attention:   
Submitted by:



284TTGCD16550

225015.002 FAN

Submittal

Data @ 460 V

## Motor Load Data

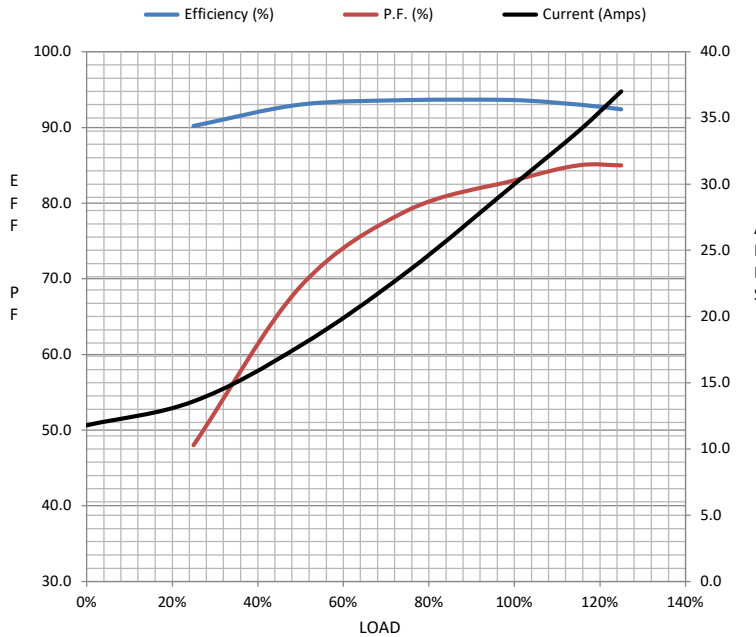
Load	0%	25%	50%	75%	100%	115%	125%	LR	
Current (Amps)	11.8	13.6	17.8	23.4	30.0	34.0	37.0	182	
Torque (ft-lb)	0.00	18.3	36.7	55.2	74.0	85.2	93.0	150	
RPM	1800	1795	1788	1782	1772	1,768	1765	0	
Efficiency (%)		90.2	93.0	93.6	93.6	93.0	92.4		
P.F. (%)	4.5	48.0	69.0	79.0	83.0	85.0	85.0	36.0	

## Motor Speed Data

	LR	Pull-Up	BD	Rated	Idle
Speed (RPM)	0	900	1650	1772	1800
Current (Amps)	182	150	110	30.0	11.8
Torque (ft-lb)	150	118	230	74.0	0.00

## Information Block

HP	25.0
Sync. RPM	1800
Frame	284
Enclosure	EPFC
Construction	TFC
Voltage	230/460#190/380 V
Frequency	60 Hz
Design	B
LR Code letter	G
Service Factor	1.0
Temp Rise @ FL	60 ° C
Duty	CONT
Ambient	50 ° C
Elevation	3,300 feet
Rotor/Shaft wk²	4.8 Lb-Ft²
Ref Wdg	HA31804014 NONE
Sound Pressure @ 1M	75 dBA
VFD Rating	NONE
Outline Dwg	SS311106-1275
Conn. Diag	EE7308T
Additional Specifications:	
0	
0	
EQUIV CKT (OHMS / PHASE)	
R1	R2
0.2000	0.1250
X1	X2
0.7420	0.9720
Xm	
19.4360	



## Speed -Torque Curve

