

PRODUCT INFORMATION PACKET



Model No: 284TTFPA8102

Catalog No: L414

Other Purpose Motor, 10 & 7.50 HP, 3 Ph, 60 & 50 Hz, 230/460 & 190/380 V, 900 & 750 RPM,
284T Frame, TEFC

Regal and Marathon are trademarks of Regal Rexnord Corporation or one of its affiliated companies.

©2023 Regal Rexnord Corporation, All Rights Reserved. MC017097E

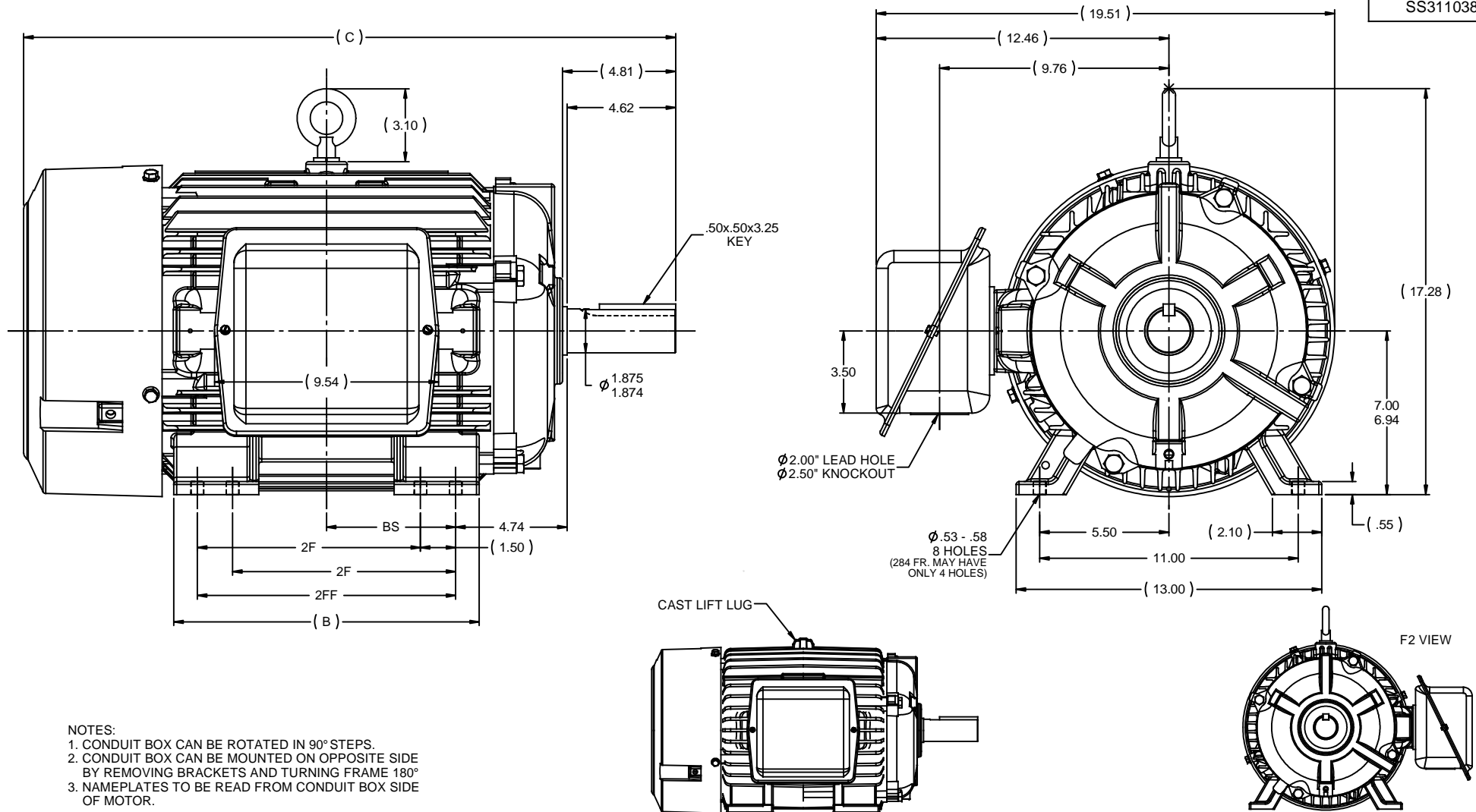


Nameplate Specifications

Phase	3	Output HP	10 & 7.5 Hp
Output KW	7.5 & 5.6 kW	Voltage	230/460 & 190/380 V
Speed	865 & 720 rpm	Service Factor	1.15 & 1.15
Frame	284T	Enclosure	Totally Enclosed Fan Cooled
Thermal Protection	No Protection	Efficiency	84 & 86 %
Ambient Temperature	40 °C	Frequency	60 & 50 Hz
Current	31/15.5 & 28/14 A	Power Factor	72
Duty	Continuous	Insulation Class	F
Design Code	B	KVA Code	F
Drive End Bearing Size	6311	Opp Drive End Bearing Size	6210
UL	Recognized	CSA	Y
CE	Y	IP Code	43
Number of Speeds	1		

Technical Specifications

Electrical Type	Squirrel Cage Induction Run	Starting Method	Across The Line
Poles	8	Rotation	Reversible
Resistance Main	1.38 Ohms	Mounting	Rigid Base
Motor Orientation	Horizontal	Drive End Bearing	Ball
Opp Drive End Bearing	Ball	Frame Material	Cast Iron
Shaft Type	T	Overall Length	26.26 in
Frame Length	12.75 in	Shaft Diameter	1.875 in
Shaft Extension	4.62 in	Assembly/Box Mounting	F1/F2 CAPABLE
Outline Drawing	B-SS311038-1275	Connection Drawing	A-EE7308



7	REVISED TO SHOW NEW FRAME MU90645	MSG 03-31-2009	LC	TOLERANCES UNLESS SPECIFIED		DRAWN DRS 07-06-2000
6	REVISED MOUNTING HOLE QUANTITY CN 40694	DRS 10-25-2008	ML	DEC INCHES		CHK ML 07-10-2000
5	ADDED F2 VIEW MARKETING	RJW 12-15-2008	DRS	X $\pm .1$		APPR SW 07-10-2000
4	REDRAWN IN AUTOCAD	TAT 06-29-2004	ML	XX $\pm .03$		SCALE 1:4
3	CORRECTED C'BOX HOLE CN 29200-1454	HLB 02-16-2007	XXX	$\pm .005$	TITLE OUTLINE - TEFC - TFPA	REF
2	REMOVED DUAL DRILLING FROM FEET CN 29200-991	NJS 10-26-2000	XXX	$\pm .0005$	280T FR. - STD - 11.00 LAM	FMF
NO	REVISION	BY & DATE	CHK	ANG $\pm 7'30"$	MATL	PREV SS200046
THIS DRAWING IN DESIGN AND DETAIL IS OUR PROPERTY AND MUST NOT BE USED EXCEPT IN CONNECTION WITH OUR WORK. ALL RIGHTS OF DESIGN AND INVENTION ARE RESERVED. THIS IS AN ELECTRONICALLY GENERATED DOCUMENT - DO NOT SCALE THIS PRINT				RFP	CAD FILE SS311038	SIZE B
				DIST LB		DRAWING NO
						SS311038
						REV 7



				TOLERANCES UNLESS SPECIFIED		 Regal Beloit America, Inc.	DRAWN RM 11/20/1990				
5	CHG TO REGAL LOGO	SL 09/10/2015	AB	DEC.	INCHES		CHK ML 11/21/1990				
4	REVISED IEC NOTATIONS	MSG 11/15/2011	CMN	.X	±.1		APPD SAS 04/24/2003				
3	ADDED IEC NOTATIONS... (U1), (V1) ETC. MU95194	MSG 5/10/2010	MJS	.XX	±.02		SCALE 1=1				
2	ADDED THE OPTIONAL CORD CONNECTION MU46318	RDH 04/24/2003	DRS	.XXX	±.005	TITLE CONNECTION DIAGRAM 3ø – DUAL VOLTAGE MOTOR	REF				
1	REDRAWN	RM 11/20/1990		.XXXX	±.0005	MAT'L	FMF				
NO.	REVISION	BY & DATE	CHK	ANG	±7"30"	FINISH	PREV				
THIS DRAWING IN DESIGN AND DETAIL IS OUR PROPERTY AND MUST NOT BE USED EXCEPT IN CONNECTION WITH OUR WORK ALL RIGHTS OF DESIGN AND INVENTION ARE RESERVED THIS IS AN ELECTRONICALLY GENERATED DOCUMENT – DO NOT SCALE THIS PRINT			RFP		CAD FILE ee7308		SIZE	DRAWING NO.	PAGE	OF	REV.
			DIST WP				A	EE7308			5