

PRODUCT INFORMATION PACKET



Model No: 284TTFPA4028

Catalog No: U655

25 HP General Purpose Motor, 3 phase, 1800 RPM, 200 V, 284T Frame, TEFC
General Purpose Motors

Regal and Marathon are trademarks of Regal Rexnord Corporation or one of its affiliated companies.
©2021 Regal Rexnord Corporation, All Rights Reserved. MC017097E



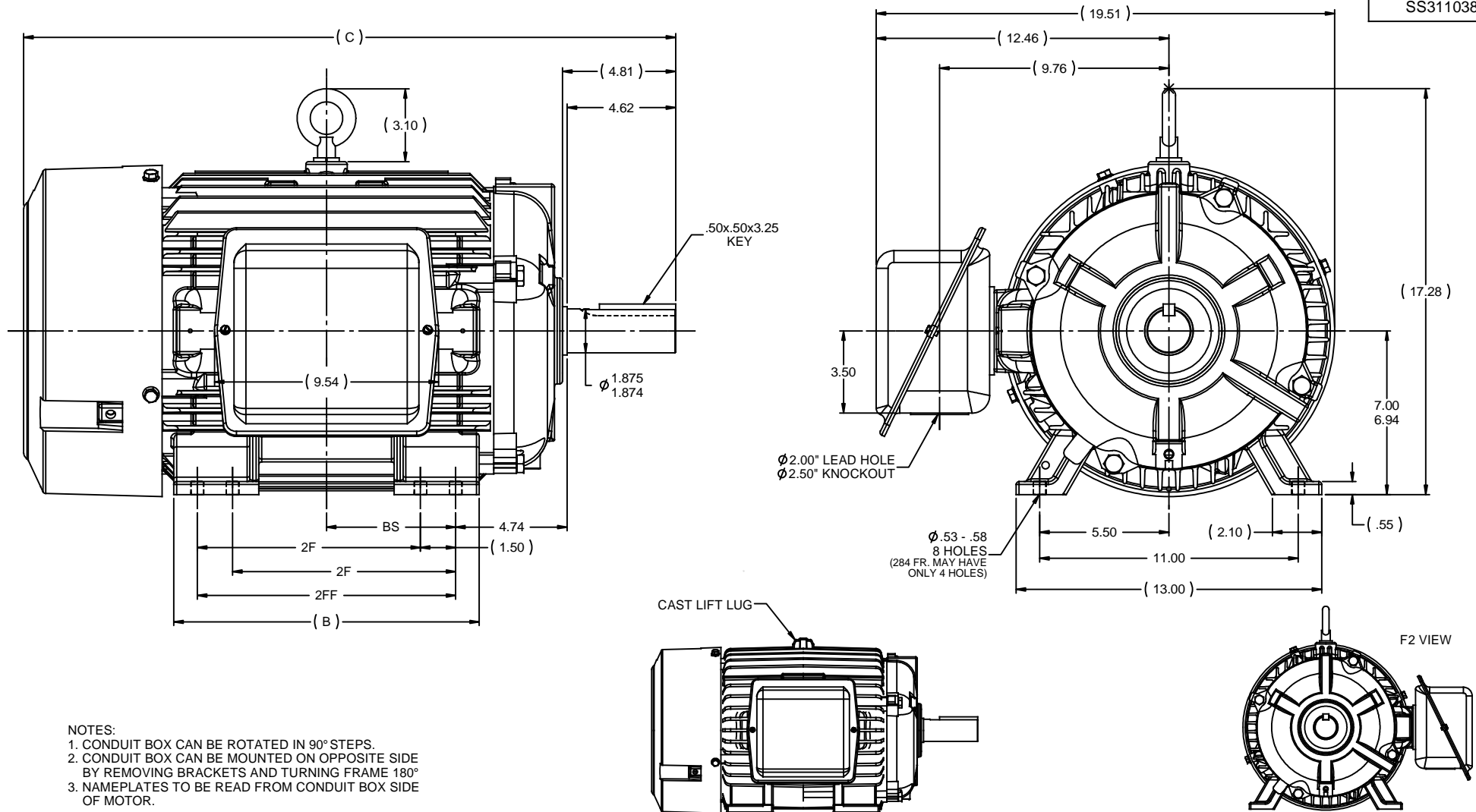
Nameplate Specifications

Output HP	25 Hp	Output KW	18.7 kW
Frequency	60 Hz	Voltage	200 V
Current	71.5 A	Speed	1762 rpm
Service Factor	1.15	Phase	3
Efficiency	92.4 %	Power Factor	82
Duty	Continuous	Insulation Class	F
Design Code	B	KVA Code	F
Frame	284T	Enclosure	Totally Enclosed Fan Cooled
Thermal Protection	No	Ambient Temperature	40 °C
Drive End Bearing Size	6311	Opp Drive End Bearing Size	6210
UL	Recognized	CSA	Y
CE	Y	IP Code	43
Number of Speeds	1		

Technical Specifications

Electrical Type	Squirrel Cage Induction Run	Starting Method	Across The Line
Poles	4	Rotation	Reversible
Resistance Main	.38 Ohms	Mounting	Rigid Base
Motor Orientation	Horizontal	Drive End Bearing	Ball
Opp Drive End Bearing	Ball	Frame Material	Cast Iron
Shaft Type	T	Overall Length	26.26 in
Frame Length	12.75 in	Shaft Diameter	1.875 in
Shaft Extension	4.62 in	Assembly/Box Mounting	F1/F2 Capable
Outline Drawing	B-SS311038-1275	Connection Drawing	A-EE7300U

This is an uncontrolled document once printed or downloaded and is subject to change without notice. Date Created:10/12/2021



7	REVISED TO SHOW NEW FRAME MU90645	MSG 03-31-2009	LC	TOLERANCES UNLESS SPECIFIED		DRAWN DRS 07-06-2000
6	REVISED MOUNTING HOLE QUANTITY CN 40694	DRS 10-25-2008	ML	DEC INCHES		CHK ML 07-10-2000
5	ADDED F2 VIEW MARKETING	RJW 12-15-2008	DRS	X $\pm .1$		APPR SW 07-10-2000
4	REDRAWN IN AUTOCAD	TAT 06-29-2004	ML	XX $\pm .03$		SCALE 1:4
3	CORRECTED C'BOX HOLE CN 29200-1454	HLB 02-16-2007	XXX	$\pm .005$	TITLE OUTLINE - TEFC - TFPA	REF
2	REMOVED DUAL DRILLING FROM FEET CN 29200-991	NJS 10-26-2000	XXX	$\pm .0005$	280T FR. - STD - 11.00 LAM	FMF
NO	REVISION	BY & DATE	CHK	ANG $\pm 7'30"$	MATL	PREV SS200046
THIS DRAWING IN DESIGN AND DETAIL IS OUR PROPERTY AND MUST NOT BE USED EXCEPT IN CONNECTION WITH OUR WORK. ALL RIGHTS OF DESIGN AND INVENTION ARE RESERVED. THIS IS AN ELECTRONICALLY GENERATED DOCUMENT - DO NOT SCALE THIS PRINT				RFP	CAD FILE SS311038	SIZE B
				DIST LB		DRAWING NO
						SS311038
						REV 7

IF MOTOR HAS 9 LEADS



IF MOTOR HAS 6 LEADS

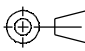


A-9806 DECAL IF CALLED FOR

IF MOTOR HAS 12 LEADS



VIEW OF TERMINAL END

DRAWING REVISION L	REVISION BY AJW	DATE 05-04-2015	TOLERANCES UNLESS OTHERWISE SPECIFIED: <div><div>DEC.</div><div>INCH</div><div>mm</div><div>ANGLE</div></div> <div><div>.X</div><div>±0.1</div><div>[±2.5]</div><div>±7° 30"</div></div> <div><div>.XX</div><div>±0.02</div><div>[±0.51]</div></div> <div><div>XXX</div><div>±0.005</div><div>[±0.127]</div></div> <div><div>.XXXX</div><div>±0.0005</div><div>[±0.0127]</div></div> <div>REMOVE BURRS & BREAK SHARP EDGES: .003/.015 [.076/.381] X 45° CORNER FILLETS: R.02 [.51] MACHINED SURFACES: 200 INCH 5.1 mm mm SHOWN IN [BRACKETS]</div>		DRAWN BY DRS	<div><div>REGAL™</div><div>Regal Beloit America, Inc.</div></div>	
ECO ECO-0077067	APPROVED BY EWH	DATE 05-05-2015			DATE 09-27-1996	DESCRIPTION	
ECO DESCRIPTION UPDATED TO SOLIDWORKS			APPROVED BY GK		CONN DIAGRAM-EXTERNAL 3Ø SINDLE VOLTAGE		
<div><div>COPYRIGHT REGAL BELOIT AMERICA, INC. ALL RIGHTS RESERVED. PROPRIETARY AND CONFIDENTIAL INFORMATION - THIS DOCUMENT IS THE PROPERTY OF REGAL BELOIT AMERICA, INC. ("OWNER") AND CONTAINS OWNER'S PROPRIETARY INFORMATION. ANY PERSON, CORPORATION OR OTHER FIRM RECEIVING IT IS DEEMED, BY RECEIVING IT, TO AGREE THAT IT, AND/OR ANY PART OF IT, SHALL NOT BE DISCLOSED TO ANY PERSON, CORPORATION OR OTHER ENTITY, DUPLICATED, AND/OR USED, EXCEPT AS EXPRESSLY APPROVED IN WRITING IN ADVANCE BY OWNER. THIS DOCUMENT SHALL BE RETURNED TO OWNER UPON REQUEST. IT MAY BE SUBJECT TO CERTAIN RESTRICTIONS UNDER APPLICABLE EXPORT CONTROL LAWS AND REGULATIONS.</div></div>			DATE 09-30-1996	MATERIAL		PROCESS/FINISH	
			REFERENCE				
			THIRD ANGLE PROJECTION		SIZE A	DRAWING NUMBER EE7300U	SHEET 1 OF 1