

PRODUCT INFORMATION PACKET



Model No: 284TTFNA16092
Catalog No: 284TTFNA16092
15,1200,TEFC,284T,3/60/460

Regal and Marathon are trademarks of Regal Rexnord Corporation or one of its affiliated companies.
©2024 Regal Rexnord Corporation, All Rights Reserved. MC017097E



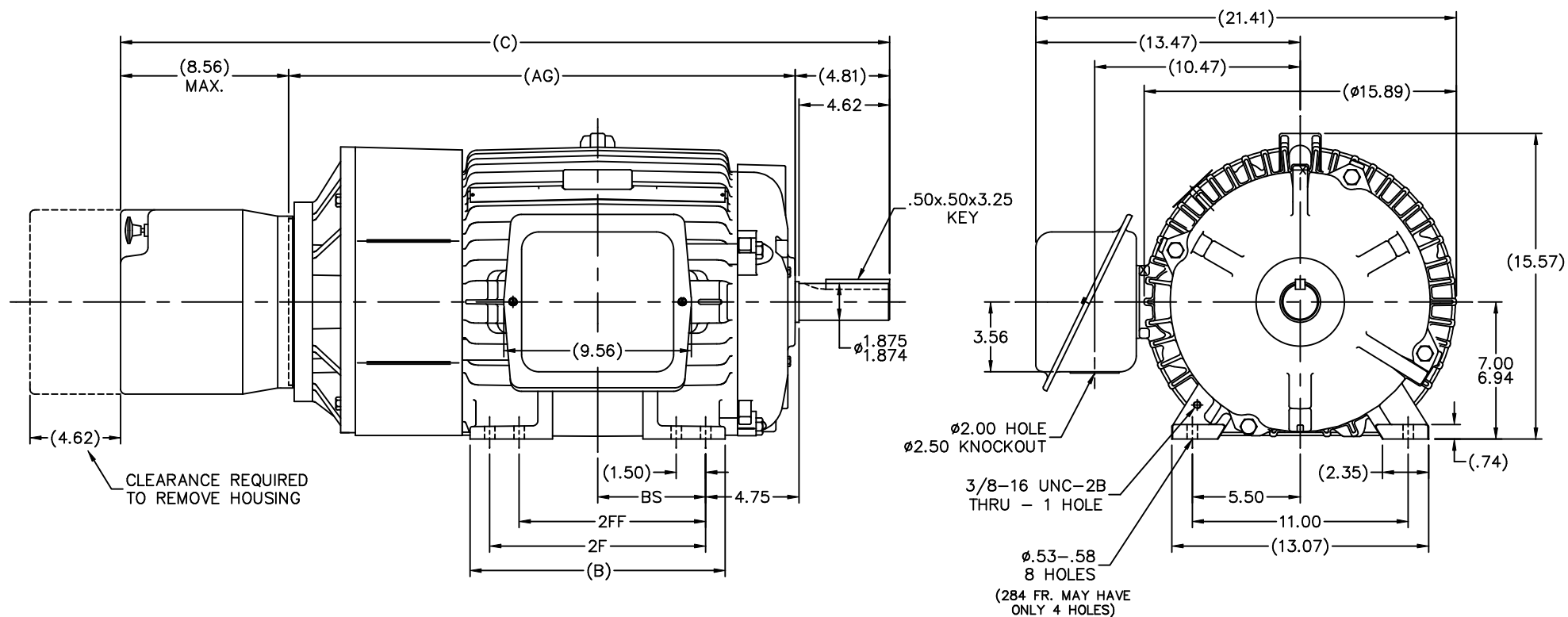
Nameplate Specifications

Phase	3	Output HP	15 Hp
Output KW	11.2 kW	Voltage	460 V
Speed	1178 rpm	Service Factor	1.15
Frame	284T	Enclosure	Totally Enclosed Fan Cooled
Thermal Protection	No Protection	Efficiency	91.7 %
Ambient Temperature	40 °C	Frequency	60 Hz
Current	20.4 A	Power Factor	75
Duty	Continuous	Insulation Class	F
Design Code	B	KVA Code	G
Drive End Bearing Size	6311	Opp Drive End Bearing Size	6311
UL	Recognized	CSA	Y
CE	Y	IP Code	43
Number of Speeds	1		

Technical Specifications


Electrical Type	Squirrel Cage Induction Run	Starting Method	Across The Line
Poles	6	Rotation	Reversible
Resistance Main	.5026 Ohms	Mounting	Rigid Base
Motor Orientation	Horizontal	Drive End Bearing	Ball
Opp Drive End Bearing	Ball	Frame Material	Cast Iron
Shaft Type	T	Assembly/Box Mounting	F1/F2 CAPABLE
Outline Drawing	B-SS311822-1275	Connection Drawing	A-EE7300

This is an uncontrolled document once printed or downloaded and is subject to change without notice. Date Created:09/24/2024



NOTES:

1. C'BOX CAN ONLY BE ROTATED CLOCKWISE UP TO 270° FROM ITS ORIGINAL POSITION.
2. NAMEPLATE TO BE READ FROM CONDUIT BOX SIDE OF MOTOR.
3. C'BOX CAN BE MOUNTED ON OPPOSITE SIDE BY REMOVING BRACKETS AND TURNING FRAME 180°.

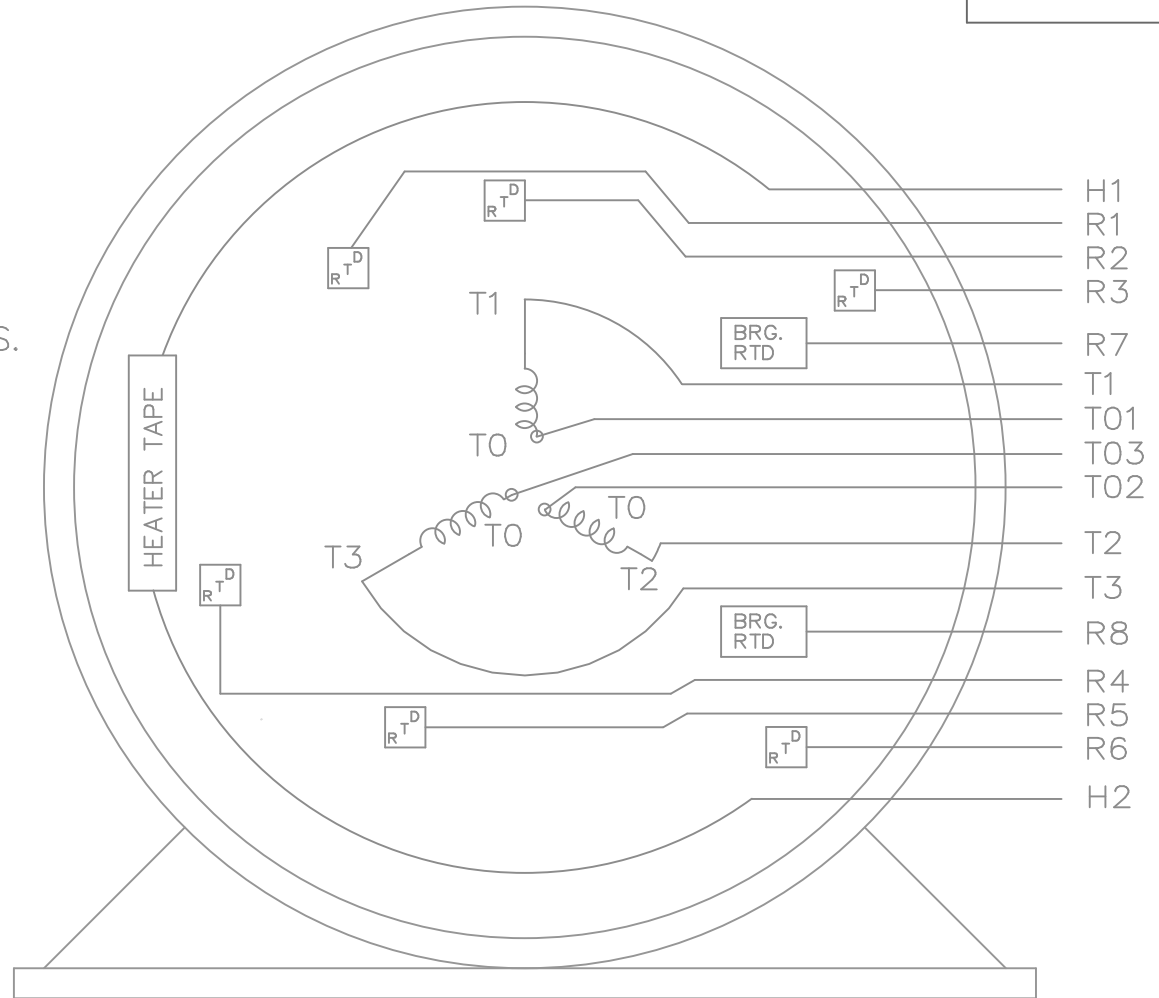
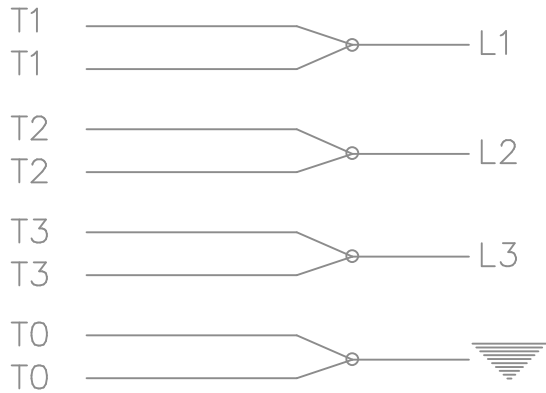
												TOLERANCES UNLESS SPECIFIED				DRAWN MSG 01-19-2006												
									DEC.		INCHES				CHK ML 01-19-2006													
									.X		±.1				APPD BW 01-20-2006													
									.XX		±.03		TITLE OUTLINE - TEFC 280T FR. - BB - STD - 12.50 LAM		SCALE 1=5													
1275 284T 37.67 24.30 12.50 9.50 --- --- 4.75									.XXX		±.005				REF													
1425 284/286T 39.17 25.80 13.00 11.00 9.50 --- 5.50									.XXXX		±.0005		MAT'L		FMF MU70598													
									NO.		REVISION		BY & DATE		CHK ANG ±7°30"		FINISH		PREV									
									THIS DRAWING IN DESIGN AND DETAIL IS OUR PROPERTY AND MUST NOT BE USED EXCEPT IN CONNECTION WITH OUR WORK ALL RIGHTS OF DESIGN AND INVENTION ARE RESERVED THIS IS AN ELECTRONICALLY GENERATED DOCUMENT - DO NOT SCALE THIS PRINT										RFP 01-25-2006		CAD FILE SS311822		SIZE B DRAWING NO. SS311822		PAGE OF		REV.	
DASH FRAME C AG B 2F 2FF 2FFF BS																												

THREE PHASE – SINGLE VOLTAGE
MOTOR OR INDUCTION GENERATOR
WITH 6 STATOR RTD'S MARKED R1
THRU R6, 2 BRG. RTD'S MARKED
R7 AND R8, AND 2 HEATER LEADS
MARKED H1 AND H2


NOTE:
WHEN MORE THAN ONE HEATER IS USED
HEATERS MUST BE CONNECTED IN SERIES.

TO REVERSE ROTATION:
INTERCHANGE ANY TWO LINE
LEAD CONNECTIONS

IF MOTOR HAS MULTIPLE
T'S PER LEAD CONNECT
TOGETHER LIKE T'S



VIEW OF TERMINAL END

				TOLERANCES UNLESS SPECIFIED			DRAWN KL 10-09-2001					
				DEC.	INCHES		CHK DJK 10-09-2001					
				.X	±.1		APPD EAB 10-09-2001					
				.XX	±.02		SCALE 1=1					
				.XXX	±.005		REF					
2	REDRAWN IN AUTOCAD	TAT 08-02-2004	ML	.XXX	±.005	TITLE CONNECTION DIAGRAM – EXTERNAL				FMF		
1	NEW DRAWING	MU38688	KL 10-09-2001		.XXXX	±.0005	MAT'L.				PREV	
NO.	REVISION	BY & DATE	CHK	ANG	± 7'30"	FINISH				REV.		
THIS DRAWING IN DESIGN AND DETAIL IS OUR PROPERTY AND MUST NOT BE USED EXCEPT IN CONNECTION WITH OUR WORK ALL RIGHTS OF DESIGN AND INVENTION ARE RESERVED THIS IS AN ELECTRONICALLY GENERATED DOCUMENT – DO NOT SCALE THIS PRINT			RFP		CAD FILE ee7300hu				SIZE	DRAWING NO.	PAGE OF	
			DIST						A	EE7300HU	2	