

PRODUCT INFORMATION PACKET

marathon®
Motors

Model No: 284TTFCA6095

Catalog No: GT3523

15 HP Close-Coupled Pump Motor, 3 phase, 1200 RPM, 575 V, 284JP Frame, TEFC
Close-Coupled Pump Motors



Regal and Marathon are trademarks of Regal Rexnord Corporation or one of its affiliated companies.
©2021 Regal Rexnord Corporation, All Rights Reserved. MC017097E

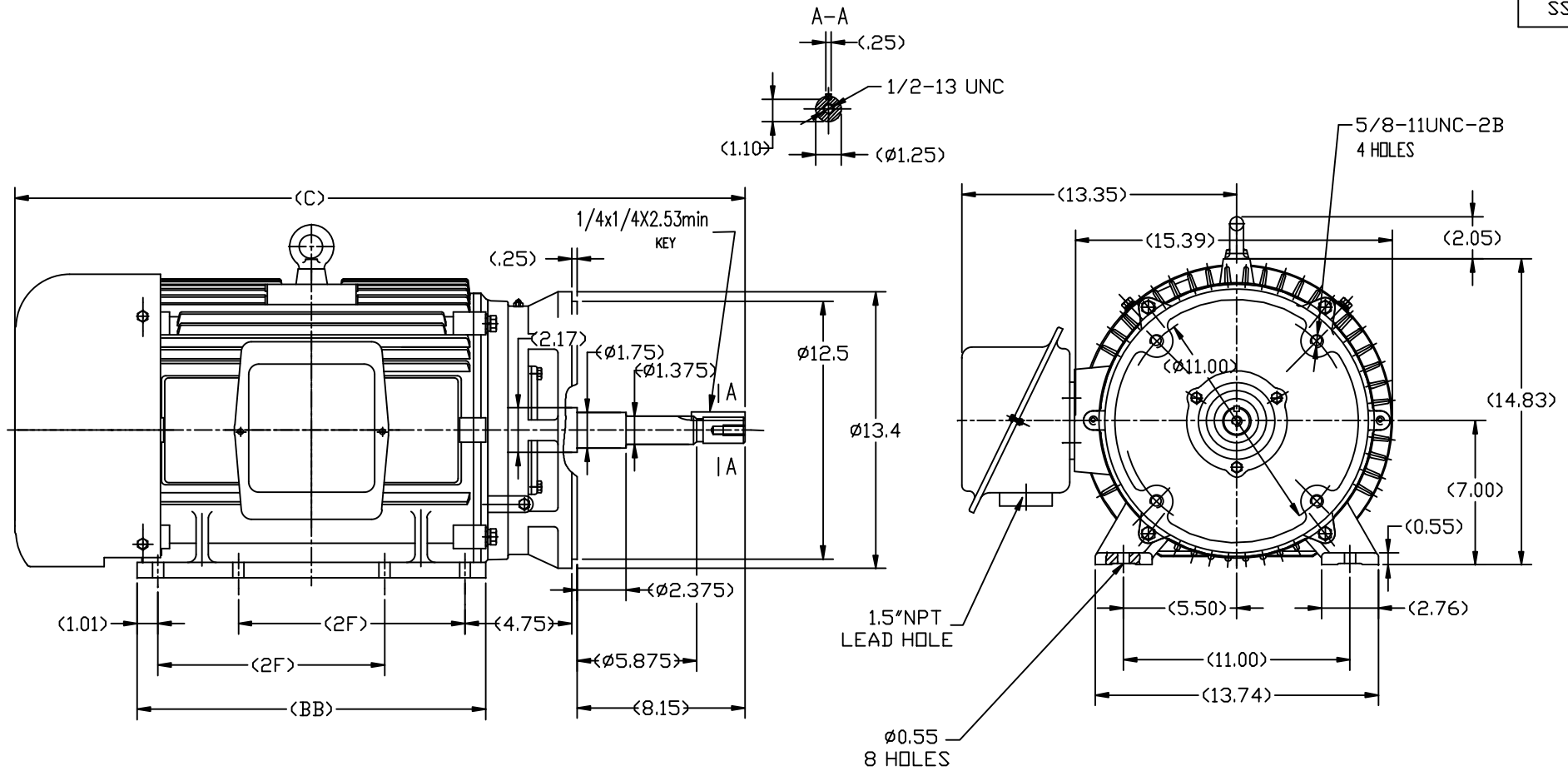
RegalRexnord

Nameplate Specifications

Output HP	15 Hp	Output KW	11.2 kW
Frequency	60 Hz	Voltage	575 V
Current	16.4 A	Speed	1185 rpm
Service Factor	1.15	Phase	3
Efficiency	91.7 %	Power Factor	74.5
Duty	Continuous	Insulation Class	F
Design Code	B	KVA Code	F
Frame	284JP	Enclosure	Totally Enclosed Fan Cooled
Thermal Protection	No	Ambient Temperature	40 °C
Drive End Bearing Size	6311	Opp Drive End Bearing Size	6210
UL	Recognized	CSA	Y
CE	Y	IP Code	43
Number of Speeds	1		

Technical Specifications

Electrical Type	Squirrel Cage Inverter Rated	Starting Method	Line Or Inverter
Poles	6	Rotation	Reversible
Resistance Main	.60916 Ohms	Mounting	Rigid Base
Motor Orientation	Horizontal Or Shaft Down	Drive End Bearing	Ball
Opp Drive End Bearing	Ball	Frame Material	Cast Iron
Shaft Type	JP	Overall Length	33.82 in
Shaft Diameter	1.250 in	Shaft Extension	8.15 in
Assembly/Box Mounting	F1/F2 CAPABLE		
Outline Drawing	SS620568-284TC	Connection Drawing	EE7300



284TC	33.82	15.75	9.50
286TC	35.00	16.93	11.00
FRAME	C	BB	2F

TOLERANCES UNLESS SPECIFIED				REGAL-BELOIT CORPORATION		DRAWN Lee 05-16-2012	
DEC.	INCHES					CHK	HPH 05-16-2012
X	±.1					APPD	JGX 05-16-2012
XX	±.03					SCALE	2=13
XXX	±.005					REF	
XXXX	±.0005					FMF	HWADA
ANG	± 1/2					PREV	
THIS DRAWING IN DESIGN AND DETAIL IS OUR PROPERTY AND MUST NOT BE USED EXCEPT IN CONNECTION WITH OUR WORK ALL RIGHTS OF DESIGN AND INVENTION ARE RESERVED THIS IS AN ELECTRONICALLY GENERATED DOCUMENT - DO NOT SCALE THIS PRINT				RFP	CAD FILE	SS620568	SIZE
				DIST			DRAWING NO.
							B
							SS620568
							REV.

THREE PHASE - SINGLE VOLTAGE MOTOR - CONDUIT BOX @ 'A'

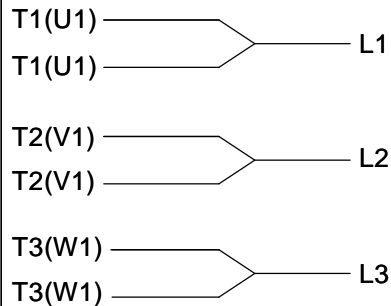
TO REVERSE ROTATION:
INTERCHANGE ANY TWO
LINE LEAD CONNECTIONS.

TERMINAL BLOCK WHEN SPECIFIED



VIEW OF TERMINAL END

IF MOTOR HAS 6 LEADS



A-9806 DECAL

OPTIONAL CORD CONNECTION



DRAWING REVISION AB	REVISION BY JJB	DATE 06-27-2017
ECO ECO-0125361	APPROVED BY TB	DATE 06-27-2017
ECO DESCRIPTION UPDATED TO CURRENT STANDARDS		
<small>COPYRIGHT REGAL BELOIT AMERICA, INC. ALL RIGHTS RESERVED. PROPRIETARY AND CONFIDENTIAL INFORMATION - THIS DOCUMENT IS THE PROPERTY OF REGAL BELOIT AMERICA, INC. ("OWNER") AND CONTAINS OWNER'S PROPRIETARY INFORMATION. ANY PERSON, CORPORATION OR OTHER FIRM RECEIVING IT IS DEEMED, BY RECEIVING IT, TO AGREE THAT IT, AND/OR ANY PART OF IT, SHALL NOT BE DISCLOSED TO ANY PERSON, CORPORATION OR OTHER ENTITY, DUPLICATED, AND/OR USED, EXCEPT AS EXPRESSLY APPROVED IN WRITING IN ADVANCE BY OWNER. THIS DOCUMENT SHALL BE RETURNED TO OWNER UPON REQUEST. IT MAY BE SUBJECT TO CERTAIN RESTRICTIONS UNDER APPLICABLE EXPORT CONTROL LAWS AND REGULATIONS.</small>		

DRAWN BY DA
DATE 03-26-1993
APPROVED BY TB
DATE 03-26-1993
REFERENCE
THIRD ANGLE PROJECTION



Regal Beloit America, Inc.

DESCRIPTION
CONNECTION DIAGRAM
EXTERNAL - SINGLE VOLTAGE - 3Ø MOTOR

MATERIAL PROCESS/FINISH

SIZE A	DRAWING NUMBER EE7300	SHEET 1 OF 1
-----------	--------------------------	-----------------

CERTIFICATION DATA SHEET

Model#: 284TTFCA6095 AA

WINDING#: CHT28460001 NONE 3

CONN. DIAGRAM: EE7300

ASSEMBLY: F1/F2 CAPABLE

OUTLINE: SS620568

TYPICAL MOTOR PERFORMANCE DATA

HP	KW	SYNC. RPM	F.L. RPM	FRAME	ENCLOSURE	KVA CODE	DESIGN
15	11.2	1200	1185	284JP	TEFC	F	B

PH	Hz	VOLTS	FL AMPS	START TYPE	DUTY	INSL	S.F	AMB°C	ELEVATION
3	60	575	16.4	LINE OR INVERTER	CONTINUOU S	F7	1.15	40	3300

FULL LOAD EFF: 91.7	3/4 LOAD EFF: 91	1/2 LOAD EFF: 90.2	GTD. EFF	ELEC. TYPE	NO LOAD AMPS
FULL LOAD PF: 74.5	3/4 LOAD PF: 73	1/2 LOAD PF: 62	90.2	SQ CAGE INV RATED	8

F.L. TORQUE	LOCKED ROTOR AMPS	L.R. TORQUE	B.D. TORQUE	F.L. RISE°C
66.5 LB-FT	88	124 LB-FT 185	200 LB-FT 300	55

SOUND PRESSURE @ 3 FT.	SOUND POWER	ROTOR WK^2	MAX. WK^2	SAFE STALL TIME	STARTS /HOUR	APPROX. MOTOR WGT
56 dBA	66 dBA	5.5 LB-FT^2	- LB-FT^2	20 SEC.	2	- LBS.

*** SUPPLEMENTAL INFORMATION ***

DE BRACKET TYPE	ODE BRACKET TYPE	MOUNT TYPE	ORIENTATION	SEVERE DUTY	HAZARDOUS LOCATION	DRIP COVER	SCREENS	PAINT
C-FACE	STANDARD	RIGID	HORIZONTAL OR SHAFT DOWN	FALSE	NONE	FALSE	NONE	BLUE (ENAMEL)

BEARINGS		GREASE	SHAFT TYPE	SPECIAL DE	SPECIAL ODE	SHAFT MATERIAL	FRAME MATERIAL
DE	OPE						
BALL	BALL						
6311	6210	POLYREX EM	JP	NONE	NONE	1045 HOT ROLLED (C-204)	CAST IRON

THERMO-PROTECTORS				THERMISTORS	CONTROL	SPACE /n HEATERS
THERMOSTATS	PROTECTORS	WDG RTDs	BRG RTDs			
NONE	NOT	NONE	NONE	NONE	FALSE	NONE VOLTS

If Inverter equals NONE, contact factory for further
information

INVERTER TORQUE: VARIABLE 10:1
INV. HP SPEED RANGE: NONE
ENCODER: NONE
NONE NONE
NONE NONE PPR
BRAKE: NONE NONE
NONE P/N NONE
NONE NONE
NONE FT-LB NONE V NONE Hz

*
N
O
T
E
S
*

DATE: 06/27/2017 01:07:39 AM
FORM 3531 REV.3 02/07/99
** Subject to change without notice.

Data Sheet

Date: 6/19/2017

Customer: _____

Attention: _____

Submitted by: FAREEDA DUDEKULA



284TTFCA6095

Submittal

Data @ 575 V

Motor Load Data

Load	0%	25%	50%	75%	100%	115%	125%	LR	
Current (Amps)	8.0	8.8	10.8	13.6	15.8	17.6	20.0	88.0	
Torque (ft-lb)	0.00	16.5	33.0	48.0	66.5	76.8	83.5	124	
RPM	1200	1195	1192	1188	1185	1,180	1180	0	
Efficiency (%)		85.5	90.2	91.0	91.7	91.7	91.0		
P.F. (%)	5.0	36.0	62.0	73.0	78.0	79.0	79.0	38.0	

Motor Speed Data

	LR	Pull-Up	BD	Rated	Idle																													
Speed (RPM)	0	700	1100	1185	1200																													
Current (Amps)	88.0	80.0	57.6	15.8	8.0																													
Torque (ft-lb)	124	110	200	66.5	0.00																													
<div><div><div>Efficiency (%)</div><div>P.F. (%)</div><div>Current (Amps)</div></div><table><thead><tr><th>LOAD</th><th>Efficiency (%)</th><th>P.F. (%)</th><th>Current (Amps)</th></tr></thead><tbody><tr><td>25%</td><td>85.5</td><td>3.5</td><td>10.0</td></tr><tr><td>50%</td><td>90.5</td><td>12.5</td><td>12.5</td></tr><tr><td>75%</td><td>91.5</td><td>18.5</td><td>15.0</td></tr><tr><td>100%</td><td>92.0</td><td>20.5</td><td>17.5</td></tr><tr><td>125%</td><td>91.5</td><td>20.0</td><td>21.0</td></tr></tbody></table></div>						LOAD	Efficiency (%)	P.F. (%)	Current (Amps)	25%	85.5	3.5	10.0	50%	90.5	12.5	12.5	75%	91.5	18.5	15.0	100%	92.0	20.5	17.5	125%	91.5	20.0	21.0					
						LOAD	Efficiency (%)	P.F. (%)	Current (Amps)																									
						25%	85.5	3.5	10.0																									
						50%	90.5	12.5	12.5																									
						75%	91.5	18.5	15.0																									
						100%	92.0	20.5	17.5																									
						125%	91.5	20.0	21.0																									
						HP					15.0																							
						Sync. RPM					1200																							
						Frame					284																							
						Enclosure					TEFC																							
						Construction					TFC																							
						Voltage					575 V																							
						Frequency					60 Hz																							
						Design					B																							
						LR Code letter					G																							
						Service Factor					1.15																							
Temp Rise @ FL					55 ° C																													
Duty					CONT																													
Ambient					40 ° C																													
Elevation					1,000 feet																													
Rotor/Shaft wk²					5.5 Lb-Ft²																													
Ref Wdg					CHT28460001 NONE																													
Sound Pressure @ 1M					56 dBA																													
VFD Rating					VARIABLE 10:1																													
Outline Dwg					SS620568																													
Conn. Diag					EE7300																													
Additional Specifications:																																		
0																																		
0																																		
EQUIV CKT (OHMS / PHASE)																																		
R1		R2		X1		X2		Xm																										
0.6260		0.3220		1.6870		3.5510		40.9970																										

Speed -Torque Curve

