

PRODUCT INFORMATION PACKET

Model No: 284TTDR16077

Catalog No: E1002

XRI® General Purpose General Purpose Motor, 15 & 15 HP, 3 Ph, 60 & 50 Hz, 230/460 & 200/400 V,
1200 & 1000 RPM, 284T Frame, DP



Regal and Marathon are trademarks of Regal Rexnord Corporation or one of its affiliated companies.

©2023 Regal Rexnord Corporation, All Rights Reserved. MC017097E

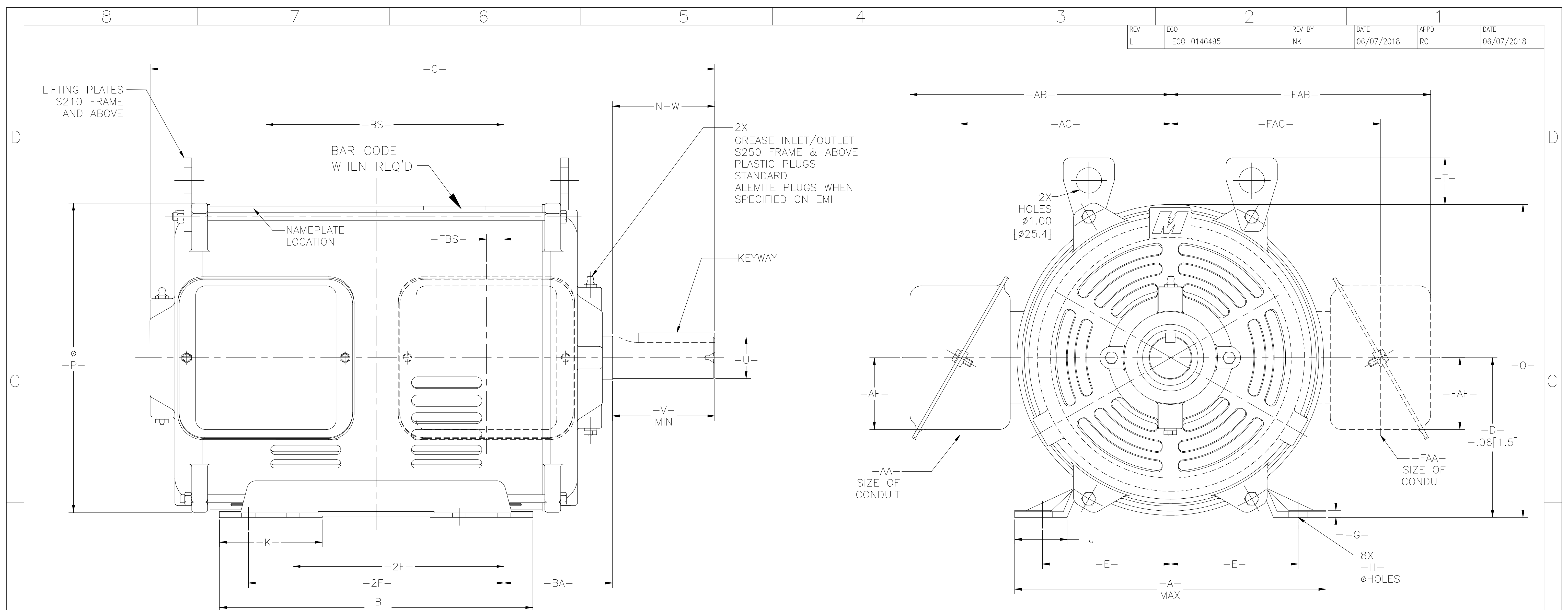
Nameplate Specifications

Phase	3	Output HP	15 & 15 Hp
Output KW	11.2 & 11.2 kW	Voltage	230/460 & 200/400 V
Speed	1170 & 970 rpm	Service Factor	1.15 & 1.15
Frame	284T	Enclosure	Drip Proof
Thermal Protection	No Protection	Efficiency	91.7 & 90.2 %
Ambient Temperature	40 °C	Frequency	60 & 50 Hz
Current	43/21.5 & 49/24.6 A	Power Factor	71.2
Duty	Continuous	Insulation Class	F
Design Code	B	KVA Code	H
Drive End Bearing Size	6311	Opp Drive End Bearing Size	6207
UL	Recognized	CSA	Y
CE	Y	IP Code	22
Number of Speeds	1		

Technical Specifications

Electrical Type	Squirrel Cage Induction Run	Starting Method	Across The Line
Poles	6	Rotation	Reversible
Resistance Main	0 Ohms	Mounting	Rigid Base
Motor Orientation	Horizontal	Drive End Bearing	Ball
Opp Drive End Bearing	Ball	Frame Material	Rolled Steel
Shaft Type	T	Overall Length	24.25 in
Shaft Diameter	1.875 in	Shaft Extension	4.62 in
Assembly/Box Mounting	F1 ONLY		
Outline Drawing	80009201-S01	Connection Drawing	80022802

REV	ECO	REV BY	DATE	APPD	DATE
L	ECO-0146495	NK	06/07/2018	RG	06/07/2018



-U- DIM.	TOL. ON -U- DIM.	SHAFT RUNOUT
UP TO 1.500 [38.1]	+0.000 [+0.000] -0.005 [-0.012]	UP TO 1.625 [41.2] .002 [0.05]
OVER 1.500 [38.1]	+0.00 [-0.01] -0.03 [-0.03]	OVER 1.625 [41.2] .003 [0.08]

CERTIFICATION OF A.C. MOTORS
 CERTIFIED FOR _____
 SPEC. NO. NO. ORDER NO. _____ NO.
 ORDER I.D. I.D. NO. EMI H.P.
 TYPE TYPE FRAME FRAME H.P. H.P.
 R.P.M. RPM VOLTS VOLTS PHASE PHASE
 HERTZ HERTZ AMPS AMPS CODE -
 REMARKS _____
 REMARKS2 _____
 APPROVED BY _____ DATE: _____

FRAME	TERMINAL BOX F1 MTG					TERMINAL BOX F2 MTG					-BA-
	-AA-	-AB-	-AC-	-AF-	-BS-	-FAA-	-FAB-	-FAC-	-FAF-	-FBS-	
S180	3/4	7.63 [193.8]	5.94 [150.8]	2.50 [63.5]	4.94 [125.4]	3/4	7.00 [177.8]	5.63 [143.0]	2.16 [54.8]	0.56 [14.2]	2.75 [69.8]
S210	1	7.63 [193.8]	5.94 [150.8]	2.50 [63.5]	7.38 [187.4]	1	7.00 [177.8]	5.63 [143.0]	2.16 [54.8]	0.19 [4.8]	3.50 [88.9]
S250	1-1/4	10.19 [258.8]	8.16 [207.3]	2.81 [71.4]	9.32 [236.7]	1-1/4	10.19 [258.8]	8.25 [209.6]	2.85 [72.4]	0.68 [72.3]	4.25 [107.9]
G250	1-1/4	10.19 [258.8]	8.16 [207.3]	2.81 [71.4]	11.07 [281.2]	1-1/4	10.19 [258.8]	8.25 [209.6]	2.85 [72.4]	0.68 [72.3]	4.25 [107.9]
S280	1-1/2	10.19 [258.8]	8.16 [207.3]	2.81 [71.4]	10.32 [262.1]	1-1/2	10.19 [258.8]	8.25 [209.6]	2.85 [72.4]	0.68 [72.3]	4.75 [120.6]

FRAME	KEYWAY			-A-	-B-	-C-	-D-	-E-	-2F-	-G-	-H-	-J-	-K-	N-W	-O-	-P-	-T-	-U-	-V-	
	WIDTH	DEPTH	LENGTH																	
S182T	0.250	6.35	0.125 [3.17]	2.50 [63.5]	9.00 [228.6]	7.75 [196.6]	13.65 [346.7]	4.500 [114.3]	3.750 [95.2]	4.500 [114.3]	0.164 [4.16]	.406 [10.31]	1.48 [37.6]	2.93 [74.4]	2.75 [69.9]	8.78 [223.0]	8.53 [216.6]	1.125 [28.57]	2.75 [69.8]	
S184T	0.250	6.35	0.125 [3.17]	2.50 [63.5]	9.00 [228.6]	7.75 [196.6]	13.65 [346.7]	4.500 [114.3]	3.750 [95.2]	5.500 [139.7]	0.164 [4.16]	.406 [10.31]	1.48 [37.6]	2.93 [74.4]	2.75 [69.9]	8.78 [223.0]	8.53 [216.6]	1.125 [28.57]	2.75 [69.8]	
S213T	0.312	7.92	0.156 [3.96]	3.13 [79.5]	10.00 [254]	10.75 [273.0]	17.28 [438.9]	5.250 [133.35]	4.250 [107.95]	5.500 [139.7]	0.180 [4.57]	.406 [10.31]	1.58 [40.1]	3.43 [87.1]	3.38 [85.8]	9.53 [242.0]	8.57 [217.6]	1.77 [44.9]	1.375 [34.9]	3.25 [82.5]
S215T	0.312	7.92	0.156 [3.96]	3.13 [79.5]	10.00 [254]	10.75 [273.0]	17.28 [438.9]	5.250 [133.35]	4.250 [107.95]	7.000 [177.8]	0.180 [4.57]	.406 [10.31]	1.58 [40.1]	3.43 [87.1]	3.38 [85.8]	9.53 [242.0]	8.57 [217.6]	1.77 [44.9]	1.375 [34.9]	3.25 [82.5]
S254T	0.375	9.52	0.188 [4.77]	3.75 [95.3]	12.18 [309.4]	12.25 [311.6]	22.12 [561.8]	6.250 [158.75]	5.000 [127]	8.250 [209.55]	0.194 [4.92]	.531 [13.48]	2.06 [52.3]	4.06 [103.1]	4.00 [101.6]	12.25 [311.1]	12.00 [304.8]	1.82 [46.2]	1.625 [41.2]	3.88 [98.5]
G256T	0.375	9.52	0.188 [4.77]	3.75 [95.3]	12.18 [309.4]	12.25 [311.6]	23.85 [605.8]	6.250 [158.75]	5.000 [127]	8.250 [209.55]	0.194 [4.92]	.531 [13.48]	2.06 [52.3]	4.06 [103.1]	4.00 [101.6]	12.25 [311.1]	12.00 [304.8]	1.82 [46.2]	1.625 [41.2]	3.88 [98.5]
S256T	0.375	9.52	0.188 [4.77]	3.75 [95.3]	12.18 [309.4]	12.25 [311.6]	22.12 [561.8]	6.250 [158.75]	5.000 [127]	10.000 [254]	0.194 [4.92]	.531 [13.48]	2.06 [52.3]	4.06 [103.1]	4.00 [101.6]	12.25 [311.1]	12.00 [304.8]	1.82 [46.2]	1.625 [41.2]	3.88 [98.5]
S284T	0.500	12.7	0.250 [6.35]	4.38 [111.2]	12.75 [323.8]	13.25 [336.5]	24.25 [615.9]	7.000 [177.8]	5.500 [139.7]	9.500 [241.3]	0.194 [4.92]	.531 [13.48]	1.81 [45.9]	3.81 [96.8]	4.62 [117.3]	13.00 [330.2]	12.00 [304.8]	1.82 [46.2]	1.875 [47.6]	4.50 [114.3]
S284TS	0.375	9.52	0.188 [4.77]	3.00 [76.2]	12.75 [323.8]	13.25 [336.5]	22.88 [581.2]	7.000 [177.8]	5.500 [139.7]	9.500 [241.3]	0.194 [4.92]	.531 [13.48]	1.81 [45.9]	3.81 [96.8]	3.25 [82.5]	13.00 [330.2]	12.00 [304.8]	1.82 [46.2]	1.625 [41.2]	3.12 [79.2]
S286T	0.500	12.7	0.250 [6.35]	4.38 [111.2]	12.75 [323.8]	13.25 [336.5]	24.25 [615.9]	7.000 [177.8]	5.500 [139.7]	11.000 [279.4]	0.194 [4.92]	.531 [13.48]	1.81 [45.9]	3.81 [96.8]	4.62 [117.3]	13.00 [330.2]	12.00 [304.8]	1.82 [46.2]	1.875 [47.6]	4.50 [114.3]
S286TS	0.375	9.52	0.188 [4.77]	3.00 [76.2]	12.75 [323.8]	13.25 [336.5]	22.88 [581.2]	7.000 [177.8]	5.500 [139.7]	11.000 [279.4]	0.194 [4.92]	.531 [13.48]	1.81 [45.9]	3.81 [96.8]	3.25 [82.5]	13.00 [330.2]	12.00 [304.8]	1.82 [46.2]	1.625 [41.2]	3.12 [79.2]

800114
800112
ENG. REF.

<p>GEOMETRIC CHARACTERISTICS & SYMBOLS</p> <ul style="list-style-type: none"> ▭ FLATNESS — STRAIGHTNESS ∠ ANGULARITY ⊥ PERPENDICULARITY (SQUARENESS) ∥ PARALLELISM ○ ROUNDNESS (CIRCULARITY) ⊘ CYLINDRICITY △ PROFILE OF ANY SURFACE ○ PROFILE OF ANY LINE ↑ RUNOUT ⊕ TRUE POSITION ⊙ CONCENTRICITY = SYMMETRY <p>ASME Y14.5M 1994</p>	<p>UNLESS OTHERWISE SPECIFIED DIM. TOLERANCES ARE AS FOLLOWS: INCH X XX XXX XXXX INCH ±.1 ±.02 ±.005 ±.0005 mm ±0.5 ±0.13 ±0.013 ANG. ±.50 DEG REMOVE BURRS & BREAK SHARP EDGES: INCH .003-.015 mm 0.1-0.4 CORNER FILLETS TO: INCH .020 mm 0.5 MACHINE SURFACES: INCH 125/ mm 3.2</p>	<p>DR BY: SBC APPD: MAS EDS DATE: 04-25-1995 04-25-1994 11-11-2011 FORMAT REV: H</p>	<p>REGAL REGAL-BELOIT CORPORATION</p> <p>DESCRIPTION: OUTLINE MOT-S180/S280 F1/F2 STDT</p> <p>SIZE: D DWG NO: 80009201</p> <p>SCALE: NONE SHEET: 1</p>
---	--	---	---

