

# PRODUCT INFORMATION PACKET



Model No: 284TTDR14082

Catalog No: M815A

15 HP Vertical Solid Shaft P-Base Motor, 3 phase, 1200 RPM, 230/460 V, 284HPV Frame, ODP  
Vertical Pump Motors

Regal and Marathon are trademarks of Regal Rexnord Corporation or one of its affiliated companies.  
©2021 Regal Rexnord Corporation, All Rights Reserved. MC017097E

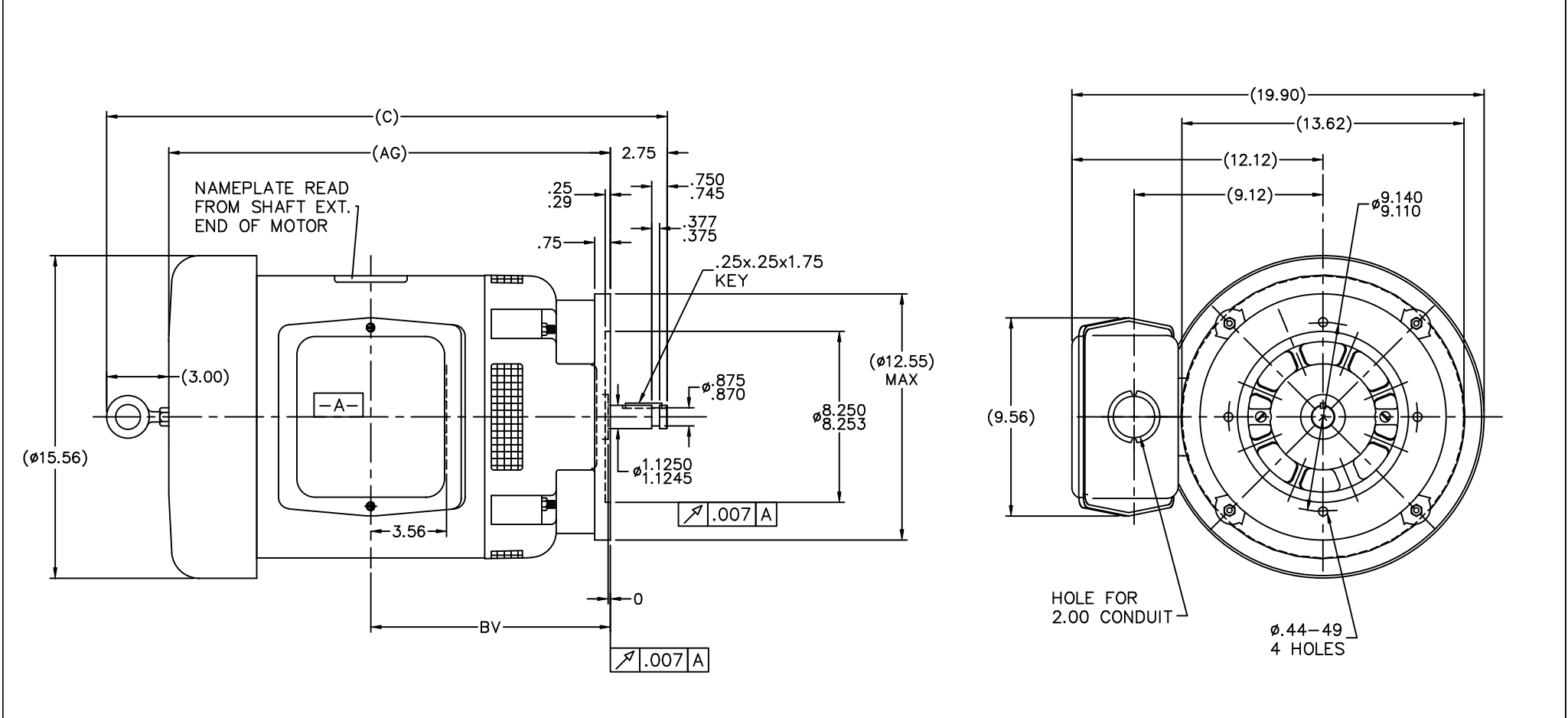


### Nameplate Specifications

Output HP	15 Hp	Output KW	11.2 kW
Frequency	60 Hz	Voltage	230/460 V
Current	39.0/19.5 A	Speed	1165 rpm
Service Factor	1.15	Phase	3
Efficiency	90.2 %	Power Factor	80.5
Duty	Continuous	Insulation Class	F
Design Code	B	KVA Code	F
Frame	284HPV	Enclosure	Drip Proof
Thermal Protection	No	Ambient Temperature	40 °C
Drive End Bearing Size	6311	Opp Drive End Bearing Size	6210
UL	Recognized	CSA	Y
CE	Y	IP Code	22
Number of Speeds	1		

### Technical Specifications


Electrical Type	Squirrel Cage Induction Run	Starting Method	Across The Line
Poles	6	Rotation	Reversible
Resistance Main	.82 Ohms	Mounting	Round
Motor Orientation	Shaft Down	Drive End Bearing	Ball
Opp Drive End Bearing	Ball	Frame Material	Rolled Steel
Shaft Type	HP	Overall Length	27.06 in
Frame Length	11.00 in	Shaft Diameter	1.125 in
Shaft Extension	2.75 in	Assembly/Box Mounting	F1/F2 CAPABLE
Connection Drawing	A-EE7308	Outline Drawing	B-SS28183-1100



NOTE:

1. CONDUIT BOX CAN BE ROTATED IN 90° STEPS.
2. NAMEPLATE TO BE READ FROM SHAFT EXT. END OF MOTOR

DASH	FRAME	AG	C	BV		
1100	284/6HP	21.31	27.06	11.56		
1250	284/6HP	22.81	28.56	12.31		
1350	284/6HP	23.81	29.56	12.81		

				TOLERANCES UNLESS SPECIFIED		DRAWN NJS 12-29-1999
				DEC.	INCHES	CHK ML 12-28-1999
10	REDRAWN IN AUTOCAD	TAT 07-22-2004	ML .X ±.1			APPD GK 12-29-2000
9	REVISED TO NEC CONDUIT BOX CN 2842B	NJS 02-18-2000	.XX ±.03		TITLE OUTLINE-"P" FLG.-NEMA SHAFT EXT. 280 HP FR.-BB-TS-VERT. DR. PR.	SCALE 7=32
8	ADDED 286 FR. TO DASH 1100 MU28622	MJD 02-10-2000	.XXX ±.005			REF
7	REDRAWN ON CADD - WAS "A" SIZE	NJS 12-29-1999	.XXXX ±.0005	MATL		FWM
NO.	REVISION	BY & DATE	CHK ANG ±.730"	FINISH		PREV
THIS DRAWING IN DESIGN AND DETAIL IS OUR PROPERTY AND MUST NOT BE USED EXCEPT IN CONNECTION WITH OUR WORK AND NO RIGHTS OF DESIGN OR INVENTION ARE RESERVED. THIS IS AN ELECTRONICALLY GENERATED DOCUMENT - DO NOT SCALE THIS PRINT				RFP	CAD FILE ss28183	SIZE B
				DIST LB		DRAWING NO. SS28183
						PAGE OF 10
						REV.



				TOLERANCES UNLESS SPECIFIED		 <b>Regal</b> Beloit America, Inc.	DRAWN RM 11/20/1990				
5	CHG TO REGAL LOGO	SL 09/10/2015	AB	DEC.	INCHES		CHK ML 11/21/1990				
4	REVISED IEC NOTATIONS	MSG 11/15/2011	CMN	.X	±.1		APPD SAS 04/24/2003				
3	ADDED IEC NOTATIONS... (U1), (V1) ETC. MU95194	MSG 5/10/2010	MJS	.XX	±.02		SCALE 1=1				
2	ADDED THE OPTIONAL CORD CONNECTION MU46318	RDH 04/24/2003	DRS	.XXX	±.005	TITLE CONNECTION DIAGRAM 3ø – DUAL VOLTAGE MOTOR	REF				
1	REDRAWN	RM 11/20/1990		.XXXX	±.0005	MAT'L	FMF				
NO.	REVISION	BY & DATE	CHK	ANG	±7"30"	FINISH	PREV				
THIS DRAWING IN DESIGN AND DETAIL IS OUR PROPERTY AND MUST NOT BE USED EXCEPT IN CONNECTION WITH OUR WORK ALL RIGHTS OF DESIGN AND INVENTION ARE RESERVED THIS IS AN ELECTRONICALLY GENERATED DOCUMENT – DO NOT SCALE THIS PRINT			RFP		CAD FILE ee7308		SIZE	DRAWING NO.	PAGE	OF	REV.
			DIST WP				A	EE7308			5