

# PRODUCT INFORMATION PACKET

Model No: 284TTDP7692

Catalog No: Y215

Kiln Duty Motor, 15 HP, 3 Ph, 60 Hz, 230/460/796 V, 1200 RPM, 284T Frame, DP



Regal and are trademarks of Regal Rexnord Corporation or one of its affiliated companies.  
©2022 Regal Rexnord Corporation, All Rights Reserved. MC017097E

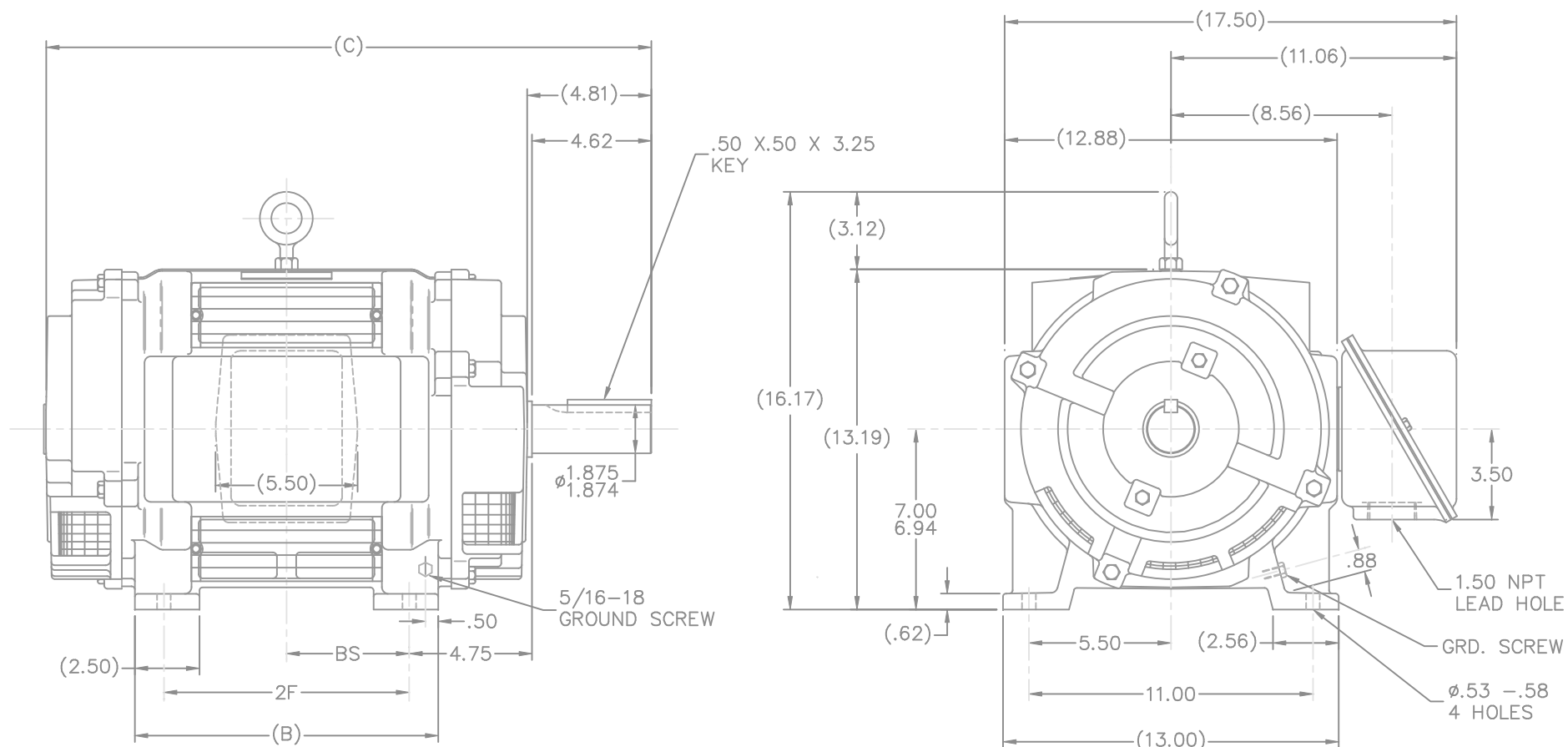
## Nameplate Specifications

Output HP	15 Hp	Output KW	11.2 kW
Frequency	60 Hz	Voltage	230/460/796 V
Current	41.0/20.5/11.9 A	Speed	1140 rpm
Service Factor	1.15	Phase	3
Efficiency	87.5 %	Power Factor	78
Duty	Oil Well	Insulation Class	F
Design Code	D	KVA Code	J
Frame	284T	Enclosure	Drip Proof
Thermal Protection	No Protection	Ambient Temperature	40 °C
Drive End Bearing Size	6311	Opp Drive End Bearing Size	6210
UL	No	CSA	N
CE	N	IP Code	23
Number of Speeds	1		

## Technical Specifications

Electrical Type	Squirrel Cage Induction Run	Starting Method	Across The Line
Poles	6	Rotation	Reversible
Resistance Main	.741 Ohms	Mounting	Rigid Base
Motor Orientation	Horizontal	Drive End Bearing	Ball
Opp Drive End Bearing	Ball	Frame Material	Cast Iron
Shaft Type	T	Overall Length	23.44 in
Frame Length	12.75 in	Shaft Diameter	1.875 in
Shaft Extension	4.81 in	Assembly/Box Mounting	F2 Only
Connection Drawing	A-EE7326C	Outline Drawing	B-SS200374-1275

This is an uncontrolled document once printed or downloaded and is subject to change without notice. Date Created:09/07/2022




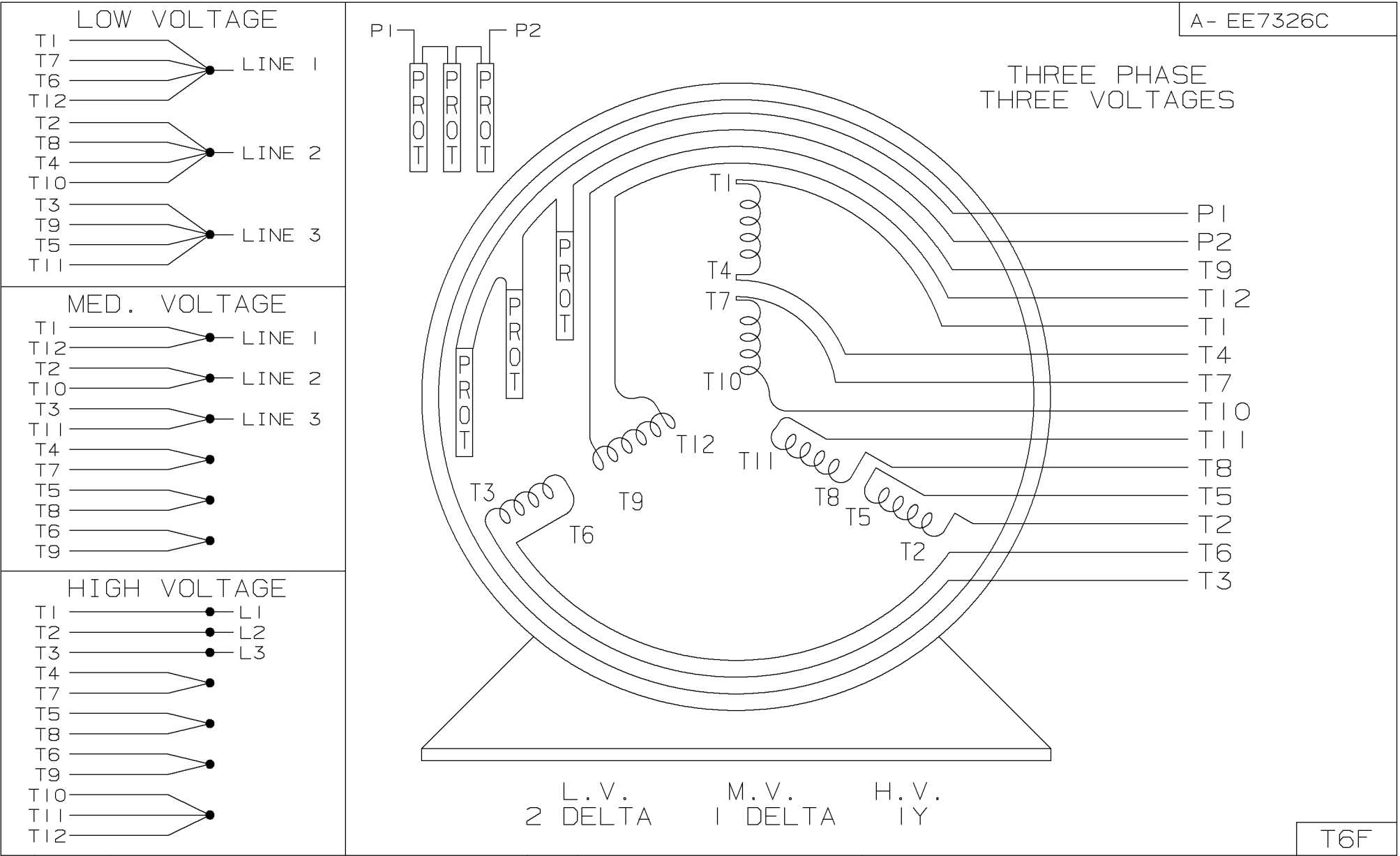
## NOTES:


1. BOX CAN BE ROTATED IN 90° STEPS
2. BOX CAN BE MOUNTED F1 ON OPPOSITE SIDE BY REMOVING BRACKETS AND TURNING FRAME 180°
3. NAMEPLATE TO BE READ FROM CONDUIT BOX SIDE OF MOTOR

(B-SS200030)

DASH	FRAME	B	C	2F	BS
1275	284T	11.75	23.44	9.50	4.75
1425	286T	13.25	24.94	11.00	5.50

					TOLERANCES UNLESS SPECIFIED				DRAWN JL 04-27-1992	
				ML	DEC.	INCHES			CHK	ML 05-07-1992
4	REDRAWN IN AUTOCAD	TAT	06-13-2005		.X	±.1			APPD	GK 05-07-1992
3	SHAFT HEIGHT DIMENSION WAS 7.00/6.97 CN 16763	DRS	02-24-2000		.XX	±.03	TITLE OUTLINE-DR.PR.-CAST IRON-THD. C'BOX 280T FR-BB-TS-D.E.V.-SCREENS-GRD.SCREW		SCALE	1=4
2	REVISED TO F2 MTG	DA	09-22-1992		.XXX	±.005			REF	
1	NEW DRAWING - DEV. ENG./E.B.	JL	05-12-1992		.XXXX	±.0005	MAT'L		FMF	
NO.	REVISION	BY & DATE		CHK	ANG	±7'30"	FINISH		PREV	
THIS DRAWING IN DESIGN AND DETAIL IS OUR PROPERTY AND MUST NOT BE USED EXCEPT IN CONNECTION WITH OUR WORK. ALL RIGHTS OF DESIGN AND INVENTION ARE RESERVED THIS IS AN ELECTRONICALLY GENERATED DOCUMENT - DO NOT SCALE THIS PRINT				RFP			CAD FILE ss200374		SIZE	DRAWING NO. PAGE OF REV.
				DIST	LB				B	SS200374 4



			<input checked="" type="checkbox"/> MAX. SURFACE ROUGHNESS UNLESS NOTED OTHERWISE		UNLESS OTHERWISE SPECIFIED DIMENSIONS ARE IN INCHES TOL. ON XX±      XXX±.005      XXXX±.0005      ANGLES±			
			MATL SPEC					DRAWN BY BLR 03-09-1998
			FINISH					CHKD BY ML 03-26-1998
5 03-26-1998 REDRAWN ON CADD, NO CHANGE			BLR		WAUSAU, WISCONSIN 54401			APPD BY GK 03-26-1998
REV DATE CHANGE			NAME		PART NAME CONNECTION DIAGRAM 3Ø - 12 LEAD			DRWG NO A-EE7326C
SHOP BOOK		PURCHASED		DISTRIBUTION - WA - LB - WP - LM		CADD FILE NO.		EE7326C

## CERTIFICATION DATA SHEET

Model#: 284TTDP7692 AC  
 CONN. DIAGRAM: A-EE7326C  
 OUTLINE: B-SS200374-1275

WINDING#: 256684 NONE 3  
 ASSEMBLY: F2 ONLY

## TYPICAL MOTOR PERFORMANCE DATA

HP	KW	SYNC. RPM	F.L. RPM	FRAME	ENCLOSURE	KVA CODE	DESIGN
15	11.2	1200	1140	284T	DP	J	D

PH	Hz	VOLTS	FL AMPS	START TYPE	DUTY	INSL	S.F	AMB°C	ELEVATION
3	60	230/460/796	41/20.5/11.9	ACROSS THE LINE	OIL WELL	F3	1.15	40	3300

FULL LOAD EFF: 87.5	3/4 LOAD EFF: 88.5	1/2 LOAD EFF: 88.5	GTD. EFF	ELEC. TYPE	NO LOAD AMPS
FULL LOAD PF: 78	3/4 LOAD PF: 71	1/2 LOAD PF: 58.5	85.5	SQ CAGE IND RUN	21 / 10.5 / 6.1

F.L. TORQUE	LOCKED ROTOR AMPS	L.R. TORQUE	B.D. TORQUE	F.L. RISE°C
68.5 LB-FT	272 / 136 / 78.6	186 LB-FT 272	239 LB-FT 349	50

SOUND PRESSURE @ 3 FT.	SOUND POWER	ROTOR WK^2	MAX. WK^2	SAFE STALL TIME	STARTS /HOUR	APPROX. MOTOR WGT
66 dBA	76 dBA	2.6 LB-FT^2	- LB-FT^2	- SEC.	-	350 LBS.

## \*\*\* SUPPLEMENTAL INFORMATION \*\*\*

DE BRACKET TYPE	ODE BRACKET TYPE	MOUNT TYPE	ORIENTATION	SEVERE DUTY	HAZARDOUS LOCATION	DRIP COVER	SCREENS	PAINT
STANDARD	STANDARD	RIGID	HORIZONTAL	FALSE	NONE	FALSE	RODENT	GRAY (ENAMEL)

BEARINGS		GREASE	SHAFT TYPE	SPECIAL DE	SPECIAL ODE	SHAFT MATERIAL	FRAME MATERIAL
DE	OPE						
BALL	BALL						
6311	6210	POLYREX EM	T	NONE	NONE	1045 HOT ROLLED (C-204)	CAST IRON

THERMO-PROTECTORS				THERMISTORS	CONTROL	SPACE /n HEATERS
THERMOSTATS	PROTECTORS	WDG RTDs	BRG RTDs			
TSTATS (N/C)	NOT	NONE	NONE	NONE	FALSE	NONE VOLTS

If Inverter equals NONE, contact factory for further information

* N O T E S *	INVERTER TORQUE: NONE			
	INV. HP SPEED RANGE: NONE			
	ENCODER: NONE			
	NONE NONE			
	NONE NONE PPR			
	BRAKE: NONE NONE			
	NONE P/N NONE			
	NONE NONE			
NONE FT-LB		NONE V		NONE Hz

DATE: 06/27/2017 12:53:18 AM  
 FORM 3531 REV.3 02/07/99  
 \*\* Subject to change without notice.

## Data Sheet

Date: 15-06-2017

Customer:

Attention:

Submitted by: FAREEDA DUDEKULA

284TTDP7692



Submittal

Data @ 460 V

## Motor Load Data

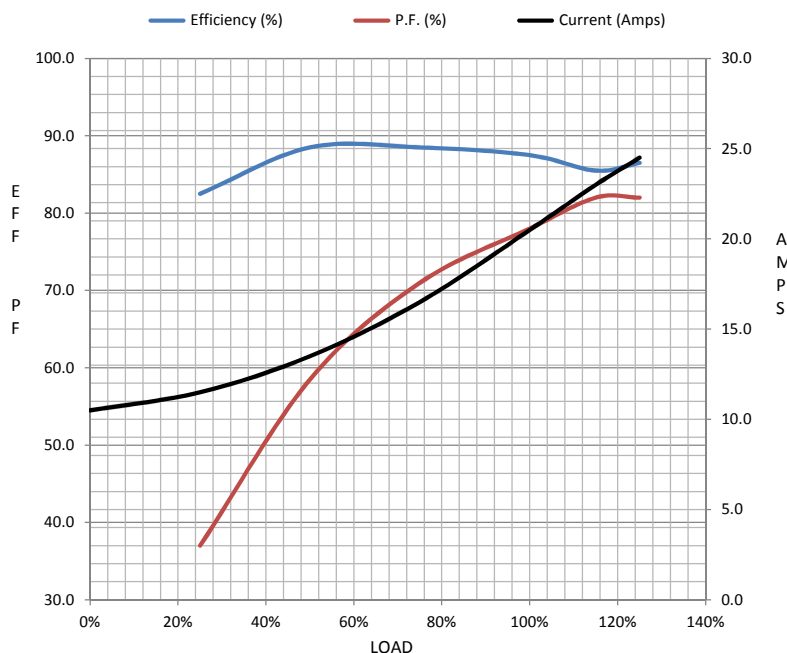
Load	0%	25%	50%	75%	100%	115%	125%	LR	
Current (Amps)	10.5	11.5	13.5	16.5	20.5	23.0	24.5	136	
Torque (ft-lb)	0.00	16.5	33.5	50.5	68.5	80.5	86.5	186	
RPM	1200	1185	1175	1160	1140	1,125	1120	0	
Efficiency (%)		82.5	88.5	88.5	87.5	85.5	86.5		
P.F. (%)	6.5	37.0	58.5	71.0	78.0	82.0	82.0	52.0	

## Motor Speed Data

	LR	Pull-Up	BD	Rated	Idle
Speed (RPM)	0	400	686	1140	1200
Current (Amps)	136	132	103	20.5	10.5
Torque (ft-lb)	186	220	239	68.5	0.00

## Information Block

HP	15.0			
Sync. RPM	1200			
Frame	284			
Enclosure	DP			
Construction	TDP			
Voltage	230/460/796 V			
Frequency	60 Hz			
Design	A			
LR Code letter	J			
Service Factor	1.15			
Temp Rise @ FL	50 ° C			
Duty	CONT			
Ambient	40 ° C			
Elevation	1,000 feet			
Rotor/Shaft wk <sup>2</sup>	2.60 Lb-Ft <sup>2</sup>			
Ref Wdg	256684 NONE			
Sound Pressure @ 1M	66 dBA			
VFD Rating	NONE			
Outline Dwg	B-SS200374-1275			
Conn. Diag	A-EE7326C			
Additional Specifications:				
0				
365THFS8036				
EQUIV CKT (OHMS / PHASE)				
R1	R2	X1	X2	Xm
0.4310	0.8220	1.5670	1.0530	26.2900



## Speed - Torque Curve

