

PRODUCT INFORMATION PACKET



Model No: 284TTDP7605

Catalog No: M334

Other Purpose Motor, 30 & 25 HP, 3 Ph, 60 & 50 Hz, 230/460 & 190/380 V, 3600 & 3000 RPM,
284JM Frame, DP

Regal and Marathon are trademarks of Regal Rexnord Corporation or one of its affiliated companies.

©2023 Regal Rexnord Corporation, All Rights Reserved. MC017097E

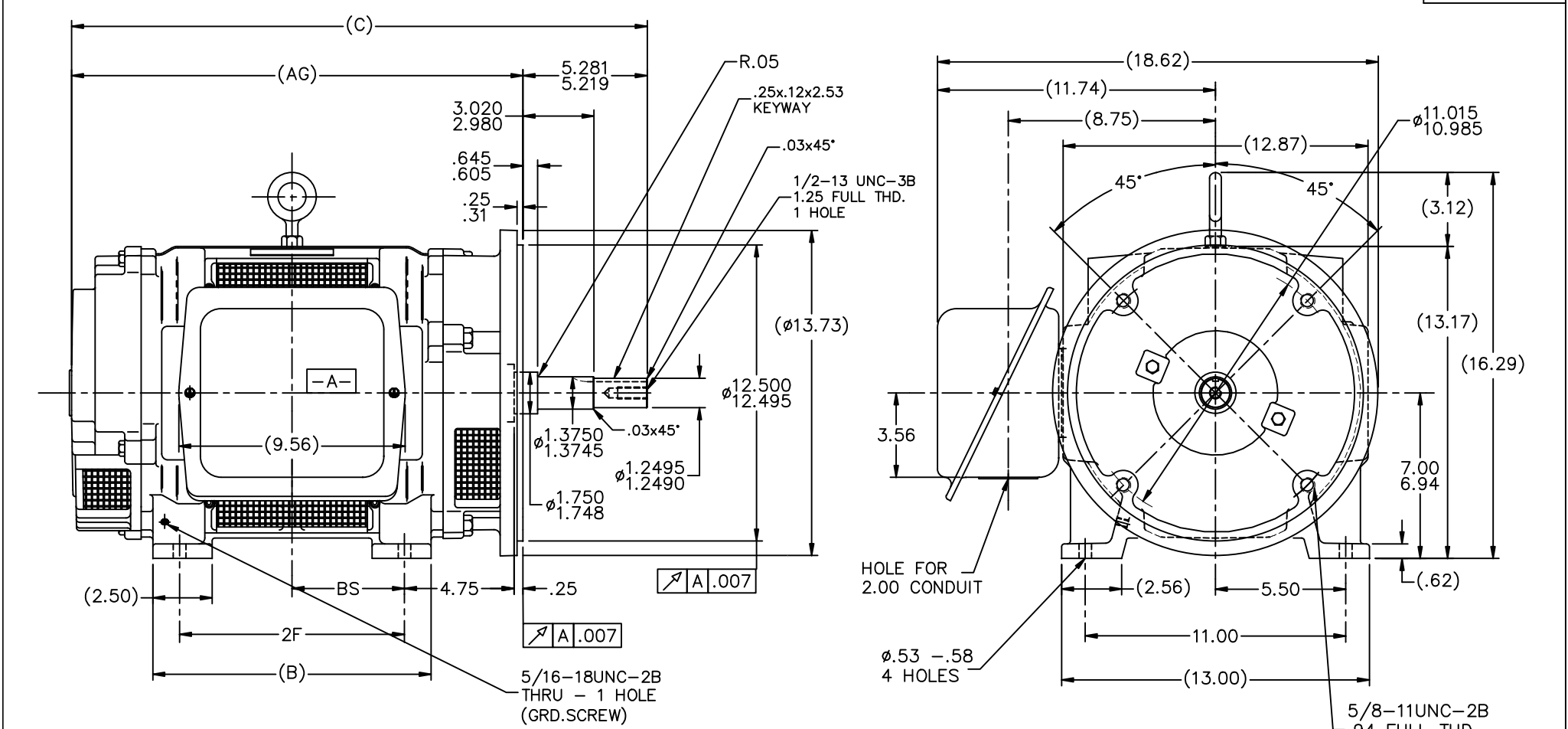


Nameplate Specifications

Phase	3	Output HP	30 & 25 Hp
Output KW	22.4 & 18.7 kW	Voltage	230/460 & 190/380 V
Speed	3515 & 2925 rpm	Service Factor	1.15 & 1.0
Frame	284JM	Enclosure	Drip Proof
Thermal Protection	No Protection	Efficiency	88.5 & 88.5 %
Ambient Temperature	40 °C	Frequency	60 & 50 Hz
Current	73/36.5 & 71/35.5 A	Power Factor	85.5
Duty	Continuous	Insulation Class	B
Design Code	B	KVA Code	E
Drive End Bearing Size	6311	Opp Drive End Bearing Size	6210
UL	No	CSA	Y
CE	Y	IP Code	23
Number of Speeds	1		

Technical Specifications

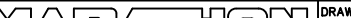
Electrical Type	Squirrel Cage Induction Run	Starting Method	Across The Line
Poles	2	Rotation	Reversible
Resistance Main	.48 Ohms	Mounting	Rigid Base
Motor Orientation	Horizontal	Drive End Bearing	Ball
Opp Drive End Bearing	Ball	Frame Material	Cast Iron
Shaft Type	JM	Overall Length	24.31 in
Frame Length	12.75 in	Shaft Diameter	1.250 in
Shaft Extension	5.28 in	Assembly/Box Mounting	F1/F2 CAPABLE
Connection Drawing	A-EE7308	Outline Drawing	B-SS200036-1275



NOTES

1. BOX CAN BE ROTATED IN 90° STEPS
2. BOX CAN BE MOUNTED ON OPPOSITE SIDE BY REMOVING BRACKETS AND TURNING FRAME 180°
3. NAMEPLATE TO BE READ FROM CONDUIT BOX SIDE OF MOTOR

DASH	FRAME	B	C	2F	AG	BS
1275	284JM	11.75	24.31	9.50	19.06	4.75
1425	286JM	13.25	25.81	11.00	20.56	5.50

4	CORRECTED RUN OUT ON FLANGE WAS .004 ECN19278	MOL 03-08-2011		TOLERANCES UNLESS SPECIFIED		DRAWN DA 01-06-1992
7	REVISED DRAWING	RJW 04-04-2007		DEC. INCHES		CHK JL 01-06-1992
6	REDRAWN IN AUTOCAD	TAT 07-06-2004	ML .X ±.1			APPD GK 01-06-1992
5	REVISED TO NEC CONDUIT BOX CN 28428	NJS 02-10-2000	.XX ±.03			SCALE 1=4
4	REAR BRACKET O.D. WAS 13.88 CN 25336	MJD 03-12-1999	.XXX ±.005		TITLE OUTLINE - DR.PR. - CAST IRON 280JM FR. - BB - TS - DBL. END VENT.	REF
3	CLARIFIED TO SHOW GROUND HOLE IN FOOT CN 22833	PGK 08-14-1996	.XXXX ±.0005	MAT'L		FMF
NO.	REVISION	BY & DATE	CHK ANG ±73°30'	FINISH		PREV
THIS DRAWING IN DESIGN AND DETAIL IS OUR PROPERTY AND MUST NOT BE USED EXCEPT IN CONNECTION WITH OUR WORK. ALL RIGHTS OF DESIGN AND INVENTION ARE RESERVED.				RFP	CAD FILE ss200036	
THIS IS A NON-CONFORMING COPY - DO NOT USE FOR THIS RUN				DIST LB		
				SIZE	DRAWING NO.	PAGE OF
				B	SS200036	8



NO.	REVISION	BY & DATE	CHK	ANG	TOLERANCES UNLESS SPECIFIED		DRAWN RM	11/20/1990
					DEC.	INCHES		
5	CHG TO REGAL LOGO	SL 09/10/2015	AB				CHK	ML 11/21/1990
4	REVISED IEC NOTATIONS	MSG 11/15/2011	CMN	.X	±.1		APPD	SAS 04/24/2003
3	ADDED IEC NOTATIONS... (U1), (V1) ETC. MU95194	MSG 5/10/2010	MJS	.XX	±.02		SCALE	1=1
2	ADDED THE OPTIONAL CORD CONNECTION MU46318	RDH 04/24/2003	DRS	.XXX	±.005		REF	
1	REDRAWN	RM 11/20/1990		.XXXX	±.0005		FMF	
					±7'30"		PREV	
THIS DRAWING IN DESIGN AND DETAIL IS OUR PROPERTY AND MUST NOT BE USED EXCEPT IN CONNECTION WITH OUR WORK ALL RIGHTS OF DESIGN AND INVENTION ARE RESERVED THIS IS AN ELECTRONICALLY GENERATED DOCUMENT - DO NOT SCALE THIS PRINT				RFP	CAD FILE ee7308		SIZE	DRAWING NO. PAGE OF REV.
				DIST WP			A	EE7308 5