

PRODUCT INFORMATION PACKET

marathon®
Motors

Model No: 284TTDP4069

Catalog No: U106

Close-Coupled Pump Motor, 25 & 20 HP, 3 Ph, 60 & 50 Hz, 230/460 & 190/380 V, 1800 & 1500 RPM,
284JM Frame, DP



Regal and Marathon are trademarks of Regal Rexnord Corporation or one of its affiliated companies.

©2023 Regal Rexnord Corporation, All Rights Reserved. MC017097E

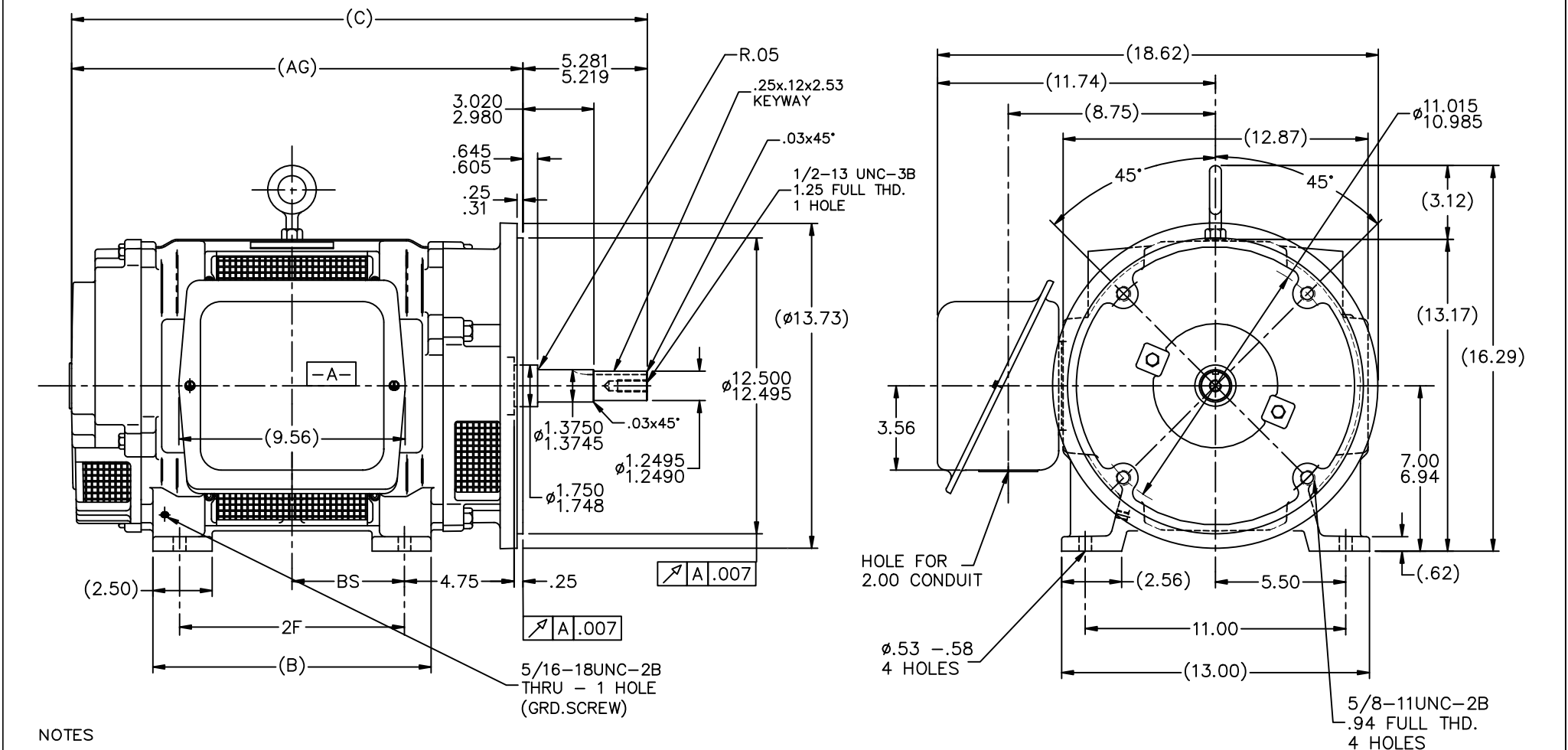
RegalRexnord

Nameplate Specifications

Phase	3	Output HP	25 & 20 Hp
Output KW	18.7 & 14.9 kW	Voltage	230/460 & 190/380 V
Speed	1765 & 1468 rpm	Service Factor	1.15 & 1.15
Frame	284JM	Enclosure	Drip Proof
Thermal Protection	No Protection	Efficiency	91.7 & 91 %
Ambient Temperature	40 °C	Frequency	60 & 50 Hz
Current	61/30.5 & 59/29.5 A	Power Factor	84
Duty	Continuous	Insulation Class	B
Design Code	B	KVA Code	F
Drive End Bearing Size	6311	Opp Drive End Bearing Size	6210
UL	Recognized	CSA	Y
CE	Y	IP Code	23
Number of Speeds	1		


Technical Specifications

Electrical Type	Squirrel Cage Induction Run	Starting Method	Across The Line
Poles	4	Rotation	Reversible
Resistance Main	.399 Ohms	Mounting	Rigid Base
Motor Orientation	Horizontal	Drive End Bearing	Ball
Opp Drive End Bearing	Ball	Frame Material	Cast Iron
Shaft Type	JM	Overall Length	24.31 in
Frame Length	12.75 in	Shaft Diameter	1.250 in
Shaft Extension	5.28 in	Assembly/Box Mounting	F1/F2 Capable
Outline Drawing	B-SS200036-1275	Connection Drawing	A-EE7308



1. BOX CAN BE ROTATED IN 90° STEPS
2. BOX CAN BE MOUNTED ON OPPOSITE SIDE BY REMOVING BRACKETS AND TURNING FRAME 180°
3. NAMEPLATE TO BE READ FROM CONDUIT BOX SIDE OF MOTOR

DASH	FRAME	B	C	2F	AG	BS
1275	284JM	11.75	24.31	9.50	19.06	4.75
1425	286JM	13.25	25.81	11.00	20.56	5.50

REMOVING BRACKETS AND TURNING FRAME 180							8 CORRECTED RUN OUT ON FLANGE WAS .004 ECN19278							MOL 03-08-2011		TOLERANCES UNLESS SPECIFIED				DRAWN DA 01-06-1992													
3. NAMEPLATE TO BE READ FROM CONDUIT BOX SIDE OF MOTOR							7 REVISED DRAWING							RJW 04-04-2007		DEC.		INCHES		CHK JL 01-06-1992													
							6 REDRAWN IN AUTOCAD							TAT 07-06-2004		ML		.X ±.1		APPD GK 01-06-1992													
							5 REVISED TO NEC CONDUIT BOX CN 28428							NJS 02-10-2000		.XX		±.03		SCALE 1=4													
							4 REAR BRACKET O.D. WAS 13.88 CN 25336							MJD 03-12-1999		.XXX		±.005		TITLE OUTLINE - DR.PR. - CAST IRON 280UM FR. - BB - TS - DBL. END VENT.													
							3 CLARIFIED TO SHOW GROUND HOLE IN FOOT CN 22833							PGK 08-14-1996		.XXXX		±.0005		MAT'L													
DASH							FRAME							B		C		2F		AG		BS											
1275							284JM							11.75		24.31		9.50		19.06		4.75											
1425							286JM							13.25		25.81		11.00		20.56		5.50											
THIS DRAWING IN DESIGN AND DETAIL IS OUR PROPERTY AND MUST NOT BE USED EXCEPT IN CONNECTION WITH OUR WORK ALL RIGHTS OF DESIGN AND INVENTION ARE RESERVED THIS IS AN ELECTRONICALLY GENERATED DOCUMENT - DO NOT SCALE THIS PRINT												NO.		REVISION		BY & DATE		CHK		ANG		±7"30"		FINISH		PREV							
RFP												DIST		LB		CAD FILE ss200036										SIZE B		DRAWING NO. SS200036		PAGE OF 8		REV.	



				TOLERANCES UNLESS SPECIFIED		 Regal Beloit America, Inc.	DRAWN RM	11/20/1990		
5	CHG TO REGAL LOGO	SL 09/10/2015	AB	DEC.	INCHES		CHK	ML 11/21/1990		
4	REVISED IEC NOTATIONS	MSG 11/15/2011	CMN	.X	±.1		APPD	SAS 04/24/2003		
3	ADDED IEC NOTATIONS... (U1), (V1) ETC. MU95194	MSG 5/10/2010	MJS	.XX	±.02		SCALE 1=1			
2	ADDED THE OPTIONAL CORD CONNECTION MU46318	RDH 04/24/2003	DRS	.XXX	±.005	TITLE CONNECTION DIAGRAM 3ø – DUAL VOLTAGE MOTOR		REF		
1	REDRAWN	RM 11/20/1990		.XXXX	±.0005	MAT'L.		FMF		
NO.	REVISION	BY & DATE	CHK	ANG	±7"30"	FINISH		PREV		
THIS DRAWING IN DESIGN AND DETAIL IS OUR PROPERTY AND MUST NOT BE USED EXCEPT IN CONNECTION WITH OUR WORK ALL RIGHTS OF DESIGN AND INVENTION ARE RESERVED THIS IS AN ELECTRONICALLY GENERATED DOCUMENT – DO NOT SCALE THIS PRINT			RFP		CAD FILE ee7308		SIZE A	DRAWING NO. EE7308	PAGE OF	REV. 5
			DIST WP							