

PRODUCT INFORMATION PACKET



Model No: 284TTDP14009

Catalog No: U109A

Close-Coupled Pump Motor, 30 & 25 HP, 3 Ph, 60 & 50 Hz, 230/460 & 190/380 V, 3600 & 3000 RPM,
284JM Frame, DP

Regal and Marathon are trademarks of Regal Rexnord Corporation or one of its affiliated companies.

©2023 Regal Rexnord Corporation, All Rights Reserved. MC017097E

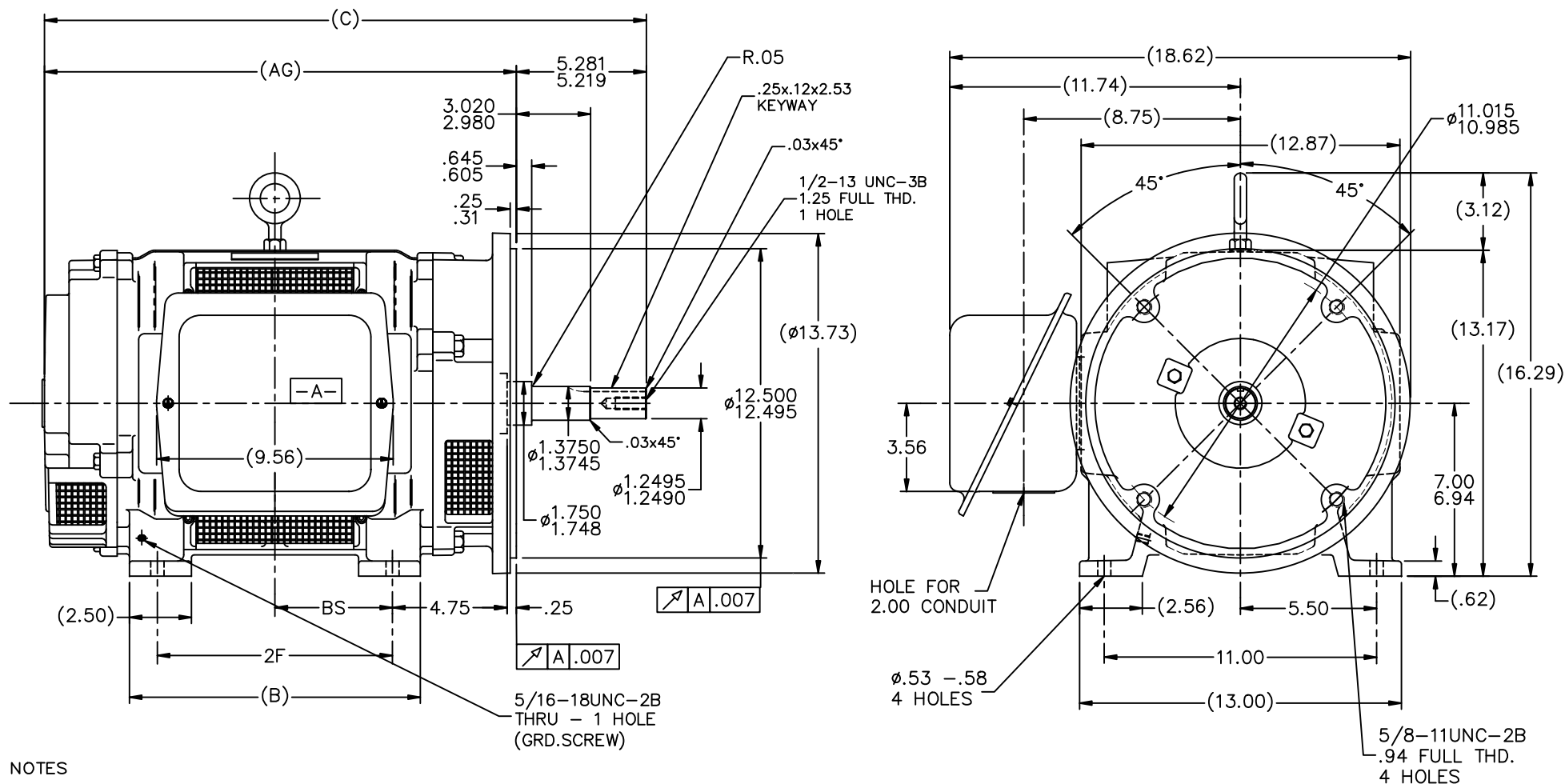


Nameplate Specifications

Phase	3	Output HP	30 & 25 Hp
Output KW	22.4 & 18.7 kW	Voltage	230/460 & 190/380 V
Speed	3530 & 2935 rpm	Service Factor	1.15 & 1.0
Frame	284JM	Enclosure	Drip Proof
Thermal Protection	No Protection	Efficiency	91 & 91.5 %
Ambient Temperature	40 °C	Frequency	60 & 50 Hz
Current	72/36 & 71/35.5 A	Power Factor	85.5
Duty	Continuous	Insulation Class	F
Design Code	B	KVA Code	F
Drive End Bearing Size	6311	Opp Drive End Bearing Size	6210
UL	Recognized	CSA	Y
CE	Y	IP Code	23
Number of Speeds	1		

Technical Specifications

Electrical Type	Squirrel Cage Induction Run	Starting Method	Across The Line
Poles	2	Rotation	Reversible
Resistance Main	.364 Ohms	Mounting	Rigid Base
Motor Orientation	Horizontal	Drive End Bearing	Ball
Opp Drive End Bearing	Ball	Frame Material	Cast Iron
Shaft Type	JM	Overall Length	24.31 in
Frame Length	12.75 in	Shaft Diameter	1.250 in
Shaft Extension	5.28 in	Assembly/Box Mounting	F1/F2 Capable
Outline Drawing	B-SS200036-1275	Connection Drawing	A-EE7308



NOTES

1. BOX CAN BE ROTATED IN 90° STEPS
2. BOX CAN BE MOUNTED ON OPPOSITE SIDE BY REMOVING BRACKETS AND TURNING FRAME 180°
3. NAMEPLATE TO BE READ FROM CONDUIT BOX SIDE OF MOTOR

DASH	FRAME	B	C	2F	AG	BS
1275	284JM	11.75	24.31	9.50	19.06	4.75
1425	286JM	13.25	25.81	11.00	20.56	5.50

8	CORRECTED RUN OUT ON FLANGE WAS .004 ECN19278	MOL 03-08-2011	UNLESS SPECIFIED	DEC. INCHES		DRAWN DA 01-06-1992
7	REVISED DRAWING	RJW 04-04-2007	ML	.X		CHK JL 01-06-1992
6	REDRAWN IN AUTOCAD	TAT 07-06-2004	ML	.X		APPD GK 01-06-1992
5	REVISED TO NEC CONDUIT BOX CN 28428	NJS 02-10-2000	XX	±.03		SCALE 1=4
4	REAR BRACKET O.D. WAS 13.88 CN 25336	MJD 03-12-1999	.XXX	±.005	TITLE OUTLINE - DR.PR. - CAST IRON	REF
3	CLARIFIED TO SHOW GROUND HOLE IN FOOT CN 22833	PGK 08-14-1996	.XXX	±.0005	280JM FR. - BB - TS - DBL. END VENT.	FMF
NO.	REVISION	BY & DATE	CHK	ANG	MAT'L	PREV
THIS DRAWING IN DESIGN AND DETAIL IS OUR PROPERTY AND MUST NOT BE USED EXCEPT IN CONNECTION WITH OUR WORK. ALL RIGHTS OF DESIGN AND INVENTION ARE RESERVED. THIS IS AN ELECTRONICALLY GENERATED DOCUMENT - DO NOT SCALE THIS PRINT					FINISH	REV.
					CAD FILE ss200036	SIZE B
					DIST LB	DRAWING NO. SS200036
						PAGE 8



NO.	REVISION	BY & DATE	CHK	ANG	TOLERANCES UNLESS SPECIFIED	FINISH	DRAWN RM	ML	OF	REV.
5	CHG TO REGAL LOGO	SL 09/10/2015	AB	DEC.	INCHES					
4	REVISED IEC NOTATIONS	MSG 11/15/2011	CMN	.X	±.1					
3	ADDED IEC NOTATIONS... (U1), (V1) ETC. MU95194	MSG 5/10/2010	MJS	.XX	±.02					
2	ADDED THE OPTIONAL CORD CONNECTION MU46318	RDH 04/24/2003	DRS	.XXX	±.005					
1	REDRAWN	RM 11/20/1990		.XXXX	±.0005					
					±7'30"					
THIS DRAWING IN DESIGN AND DETAIL IS OUR PROPERTY AND MUST NOT BE USED EXCEPT IN CONNECTION WITH OUR WORK ALL RIGHTS OF DESIGN AND INVENTION ARE RESERVED THIS IS AN ELECTRONICALLY GENERATED DOCUMENT - DO NOT SCALE THIS PRINT						RFP	CAD FILE ee7308	SIZE A	DRAWING NO. EE7308	PAGE 5
						DIST WP				