

# PRODUCT INFORMATION PACKET

Model No: 284TTDCD6327  
Catalog No: Y320  
25,1800,ODP,284TZ,3/60/230/460 CROP DRYER

Regal and are trademarks of Regal Rexnord Corporation or one of its affiliated companies.  
©2022 Regal Rexnord Corporation, All Rights Reserved. MC017097E



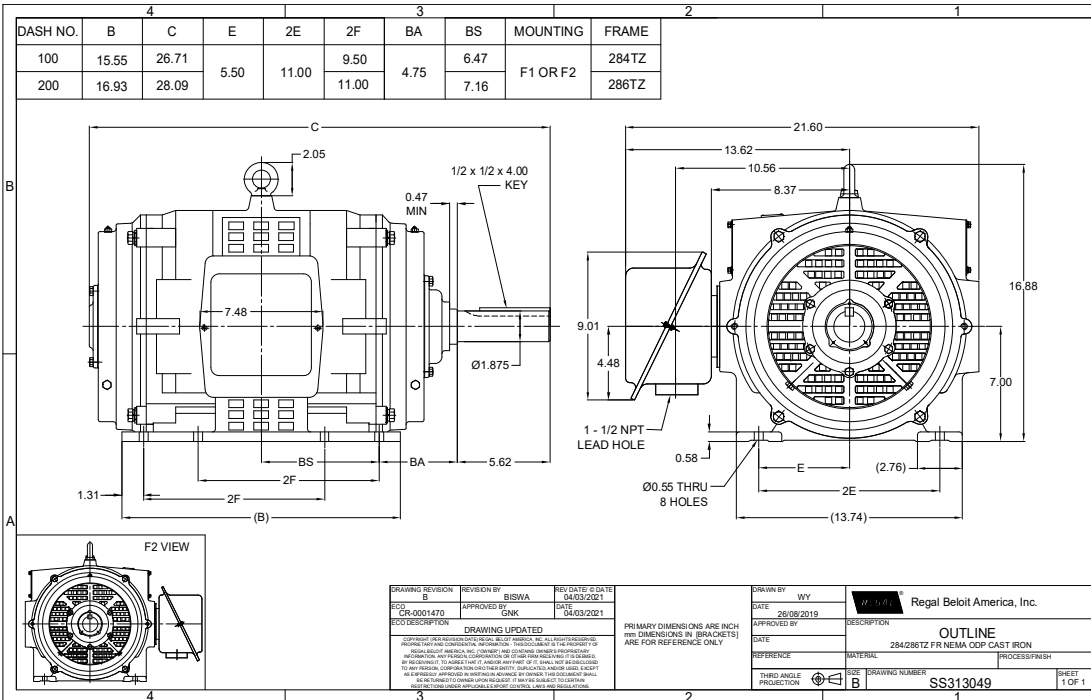
### Nameplate Specifications

Output HP	25 Hp	Output KW	18.7 kW
Frequency	60 Hz	Voltage	230/460 V
Current	62.5/31.0 A	Speed	1775 rpm
Service Factor	1.15	Phase	3
Efficiency	93.6 %	Power Factor	80
Duty	Continuous	Insulation Class	F
Design Code	B	KVA Code	G
Frame	284TZ	Enclosure	Drip Proof
Thermal Protection	No Protection	Ambient Temperature	40 °C
Drive End Bearing Size	6311	Opp Drive End Bearing Size	6210
UL	Recognized	CSA	Y
CE	Y	IP Code	23
Number of Speeds	1		

### Technical Specifications

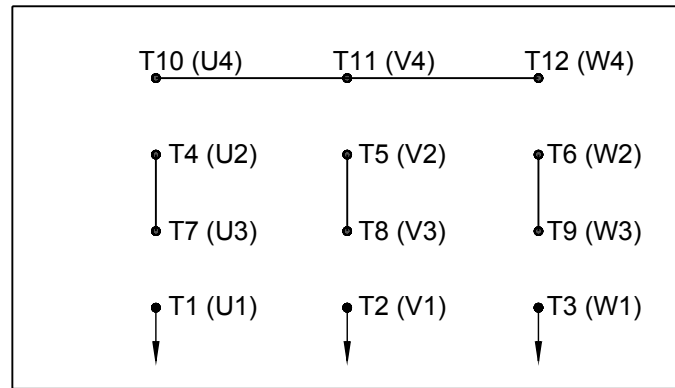
Electrical Type	Squirrel Cage Induction Run	Starting Method	Wye Start Delta Run
Poles	4	Rotation	Selective Clockwise
Resistance Main	.3657 Ohms	Mounting	Rigid Base
Motor Orientation	Horizontal	Drive End Bearing	Ball
Opp Drive End Bearing	Ball	Frame Material	Cast Iron
Shaft Type	Single Special Extension	Assembly/Box Mounting	F1/F2 CAPABLE
Connection Drawing	EE7358	Outline Drawing	SS313049-100

This is an uncontrolled document once printed or downloaded and is subject to change without notice. Date Created:09/02/2022

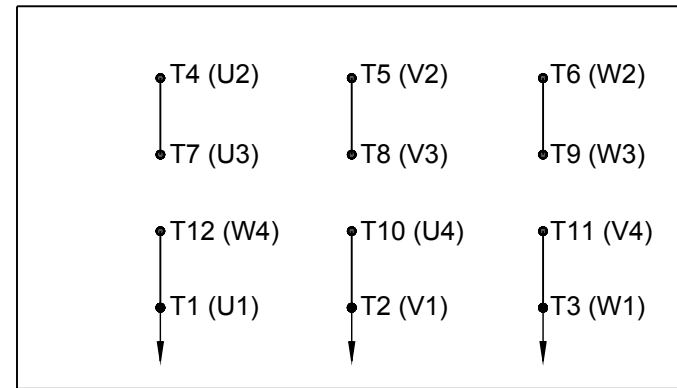


## HIGH VOLTAGE

## WYE START

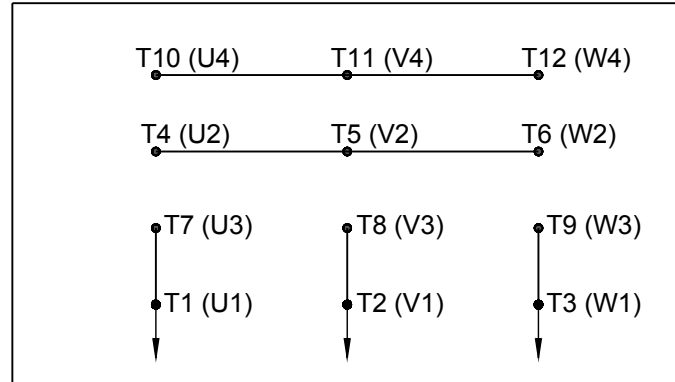


## DELTA RUN

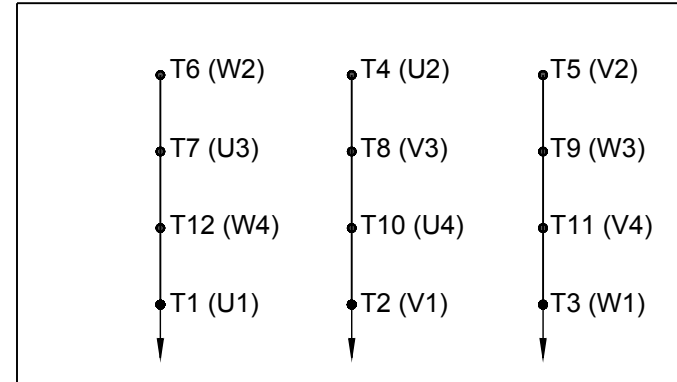



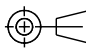
## LOW VOLTAGE

## WYE START



## DELTA RUN

4/2 CKTY  $\triangle$ 

DRAWING REVISION D	REVISION BY JWO	DATE 01-26-2016		DRAWN BY BLR	 Regal Beloit America, Inc.			
ECO ECO-0092547	APPROVED BY TB	DATE 01-26-2016		DATE 03-09-1998	DESCRIPTION <b>CONN DIAGRAM-EXTERNAL</b> 12 LEAD - DUAL VOLT. - WYE START - DELTA RUN			
ECO DESCRIPTION ADDED IEC MARKINGS				APPROVED BY GK				
<p>COPYRIGHT REGAL BELOIT AMERICA, INC. ALL RIGHTS RESERVED. PROPRIETARY AND CONFIDENTIAL INFORMATION - THIS DOCUMENT IS THE PROPERTY OF REGAL BELOIT AMERICA, INC. ("OWNER") AND CONTAINS OWNER'S PROPRIETARY INFORMATION. ANY PERSON, CORPORATION OR OTHER FIRM RECEIVING IT IS DEEMED, BY RECEIVING IT, TO AGREE THAT IT, AND/OR ANY PART OF IT, SHALL NOT BE DISCLOSED TO ANY PERSON, CORPORATION OR OTHER ENTITY, DUPLICATED, AND/OR USED, EXCEPT AS EXPRESSLY APPROVED IN WRITING IN ADVANCE BY OWNER. THIS DOCUMENT SHALL BE RETURNED TO OWNER UPON REQUEST. IT MAY BE SUBJECT TO CERTAIN RESTRICTIONS UNDER APPLICABLE EXPORT CONTROL LAWS AND REGULATIONS.</p>				DATE 03-23-1998				
				REFERENCE	MATERIAL		PROCESS/FINISH	
				THIRD ANGLE PROJECTION		SIZE A	DRAWING NUMBER EE7358	