

# PRODUCT INFORMATION PACKET

**marathon®**  
Motors

Model No: 284TTDCA6095

Catalog No: GT2523

15 HP Close-Coupled Pump Motor, 3 phase, 1200 RPM, 575 V, 284JPV Frame, ODP  
Close-Coupled Pump Motors



Regal and Marathon are trademarks of Regal Rexnord Corporation or one of its affiliated companies.  
©2021 Regal Rexnord Corporation, All Rights Reserved. MC017097E

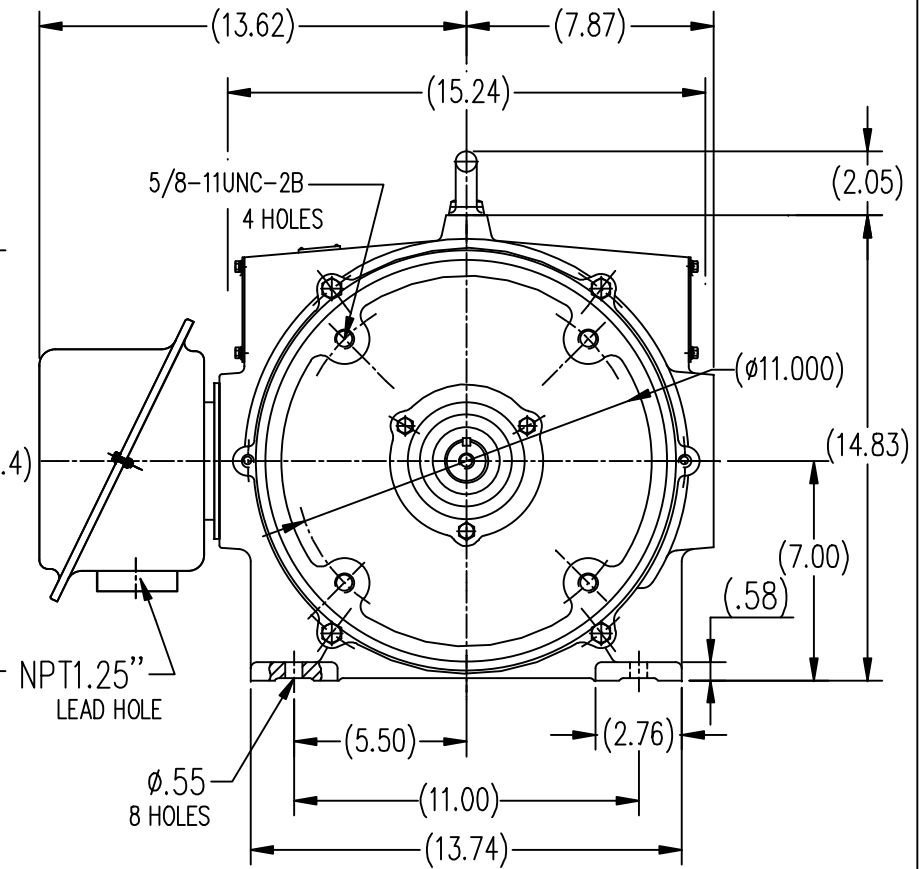
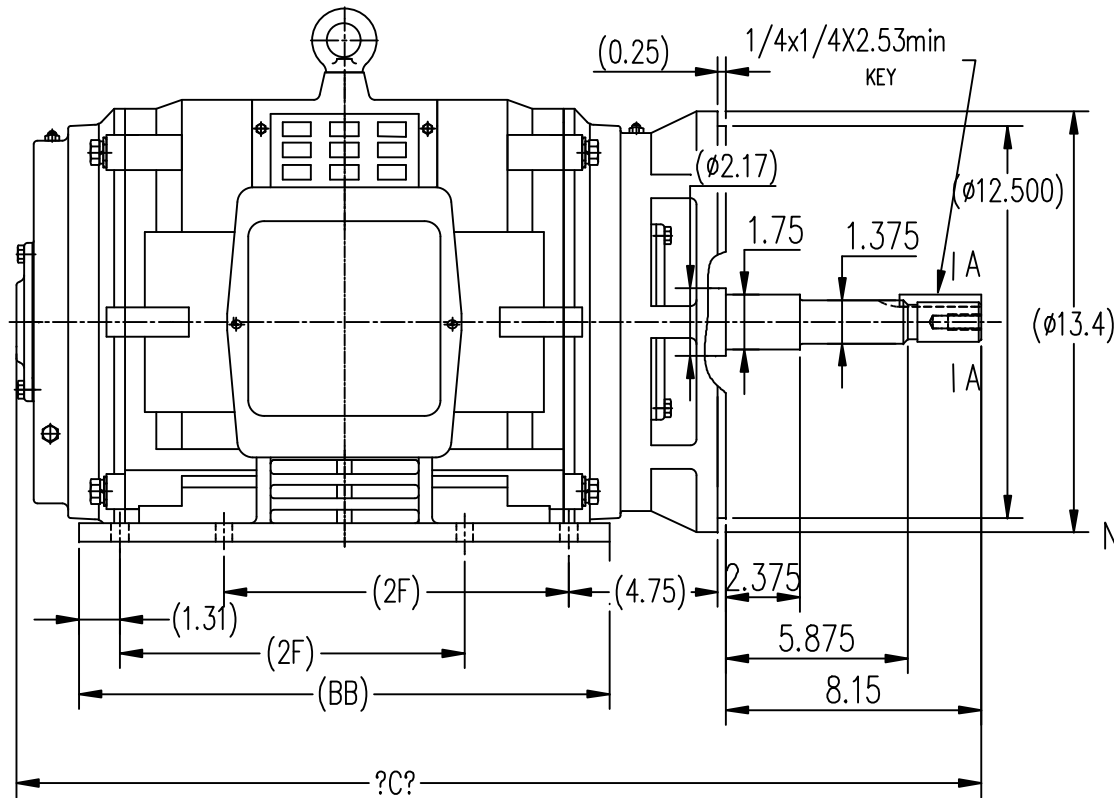
**RegalRexnord**

### Nameplate Specifications


Output HP	15 Hp	Output KW	11.2 kW
Frequency	60 Hz	Voltage	575 V
Current	16.0 A	Speed	1180 rpm
Service Factor	1.15	Phase	3
Efficiency	91.7 %	Power Factor	76
Duty	Continuous	Insulation Class	F
Design Code	B	KVA Code	F
Frame	284JPV	Enclosure	Drip Proof
Thermal Protection	No	Ambient Temperature	40 °C
Drive End Bearing Size	6311	Opp Drive End Bearing Size	6210
UL	Recognized	CSA	Y
CE	Y	IP Code	12
Number of Speeds	1		

### Technical Specifications

Electrical Type	Squirrel Cage Inverter Rated	Starting Method	Line Or Inverter
Poles	6	Rotation	Reversible
Resistance Main	.699 Ohms	Mounting	Rigid Base
Motor Orientation	Horizontal Or Shaft Down	Drive End Bearing	Ball
Opp Drive End Bearing	Ball	Frame Material	Cast Iron
Shaft Type	JP	Overall Length	29.48 in
Shaft Diameter	1.250 in	Shaft Extension	8.15 in
Assembly/Box Mounting	F1/F2 CAPABLE	Inverter Load	VARIABLE 10:1
Connection Drawing	EE7300	Outline Drawing	SS620573-284T



284T	9.50	15.55	29.48
286T	11.00	16.93	29.99
FRAME	2F	BB	C

					TOLERANCES UNLESS SPECIFIED	 REGAL-BELOIT CORPORATION	DRAWN Lee 05-16-2012		
				DEC.	INCHES		CHK HPH 05-16-2012		
				.X	±.1		APPD JGX 05-16-2012		
				.XX	±.03		SCALE 1=6		
				.XXX	±.005		REF		
				.XXXX	±.0005		FIMF HWADA		
NO.	REVISION	BY & DATE	CHK	ANG	±1/2	FINISH	PREV		
THIS DRAWING IN DESIGN AND DETAIL IS OUR PROPERTY AND MUST NOT BE USED EXCEPT IN CONNECTION WITH OUR WORK. ALL RIGHTS OF DESIGN AND INVENTION ARE RESERVED. THIS IS AN ELECTRONICALLY GENERATED DOCUMENT - NO SCALE, THIS PRINT						RFP CAD FILE SS620573	SIZE B	DRAWING NO. SS620573	REV.
						DIST			

# THREE PHASE - SINGLE VOLTAGE MOTOR - CONDUIT BOX @ 'A'

TO REVERSE ROTATION:  
INTERCHANGE ANY TWO  
LINE LEAD CONNECTIONS.

## TERMINAL BLOCK WHEN SPECIFIED



### IF MOTOR HAS 6 LEADS



A-9806 DECAL

### OPTIONAL CORD CONNECTION



## VIEW OF TERMINAL END

DRAWING REVISION AB	REVISION BY JJB	DATE 06-27-2017
ECO ECO-0125361	APPROVED BY TB	DATE 06-27-2017
ECO DESCRIPTION UPDATED TO CURRENT STANDARDS		
<small>COPYRIGHT REGAL BELOIT AMERICA, INC. ALL RIGHTS RESERVED.          PROPRIETARY AND CONFIDENTIAL INFORMATION - THIS DOCUMENT IS THE PROPERTY OF          REGAL BELOIT AMERICA, INC. ("OWNER") AND CONTAINS OWNER'S PROPRIETARY          INFORMATION. ANY PERSON, CORPORATION OR OTHER FIRM RECEIVING IT IS DEEMED,          BY RECEIVING IT, TO AGREE THAT IT, AND/OR ANY PART OF IT, SHALL NOT BE DISCLOSED          TO ANY PERSON, CORPORATION OR OTHER ENTITY, DUPLICATED, AND/OR USED, EXCEPT          AS EXPRESSLY APPROVED IN WRITING IN ADVANCE BY OWNER. THIS DOCUMENT SHALL          BE RETURNED TO OWNER UPON REQUEST. IT MAY BE SUBJECT TO CERTAIN          RESTRICTIONS UNDER APPLICABLE EXPORT CONTROL LAWS AND REGULATIONS.</small>		

DRAWN BY DA
DATE 03-26-1993
APPROVED BY TB
DATE 03-26-1993
REFERENCE

THIRD ANGLE  
PROJECTION



Regal Beloit America, Inc.

DESCRIPTION

**CONNECTION DIAGRAM**  
EXTERNAL - SINGLE VOLTAGE - 3Ø MOTOR

MATERIAL

PROCESS/FINISH

SIZE  
**A**

DRAWING NUMBER

**EE7300**

SHEET  
1 OF 1

## CERTIFICATION DATA SHEET

Model#: 284TTDCA6095 AA

WINDING#: CHT28460002 NONE 3

CONN. DIAGRAM: EE7300

ASSEMBLY: F1/F2 CAPABLE

OUTLINE: SS620573

## TYPICAL MOTOR PERFORMANCE DATA

HP	KW	SYNC. RPM	F.L. RPM	FRAME	ENCLOSURE	KVA CODE	DESIGN
15	11.2	1200	1180	284JPV	DP	F	B

PH	Hz	VOLTS	FL AMPS	START TYPE	DUTY	INSL	S.F	AMB°C	ELEVATION
3	60	575	16	LINE OR INVERTER	CONTINUOU S	F7	1.15	40	3300

FULL LOAD EFF: 91.7	3/4 LOAD EFF: 91.7	1/2 LOAD EFF: 90.2	GTD. EFF	ELEC. TYPE	NO LOAD AMPS
FULL LOAD PF: 76	3/4 LOAD PF: 70.5	1/2 LOAD PF: 59	90.2	SQ CAGE INV RATED	7.9

F.L. TORQUE	LOCKED ROTOR AMPS	L.R. TORQUE	B.D. TORQUE	F.L. RISE°C
66.5 LB-FT	76.8	108 LB-FT 162	146 LB-FT 220	45

SOUND PRESSURE @ 3 FT.	SOUND POWER	ROTOR WK^2	MAX. WK^2	SAFE STALL TIME	STARTS /HOUR	APPROX. MOTOR WGT
65 dBA	75 dBA	5 LB-FT^2	- LB-FT^2	15 SEC.	2	335 LBS.

## \*\*\* SUPPLEMENTAL INFORMATION \*\*\*

DE BRACKET TYPE	ODE BRACKET TYPE	MOUNT TYPE	ORIENTATION	SEVERE DUTY	HAZARDOUS LOCATION	DRIP COVER	SCREENS	PAINT
C-FACE	STANDARD	RIGID	HORIZONTAL OR SHAFT DOWN	FALSE	NONE	FALSE	NONE	BLUE (ENAMEL)

BEARINGS		GREASE	SHAFT TYPE	SPECIAL DE	SPECIAL ODE	SHAFT MATERIAL	FRAME MATERIAL
DE	OPE						
BALL	BALL						
6311	6210	POLYREX EM	JP	NONE	NONE	1045 HOT ROLLED (C-204)	CAST IRON

THERMO-PROTECTORS				THERMISTORS	CONTROL	SPACE /n HEATERS
THERMOSTATS	PROTECTORS	WDG RTDs	BRG RTDs			
NONE	NOT	NONE	NONE	NONE	FALSE	NONE VOLTS

If Inverter equals NONE, contact factory for further  
information

INVERTER TORQUE: VARIABLE 10:1
INV. HP SPEED RANGE: NONE
ENCODER: NONE
NONE NONE
NONE NONE PPR
BRAKE: NONE NONE
NONE P/N NONE
NONE NONE
NONE FT-LB NONE V NONE Hz

\*  
N  
O  
T  
E  
S  
\*

DATE: 06/23/2017 08:33:44 AM

FORM 3531 REV.3 02/07/99

\*\* Subject to change without notice.

## Data Sheet

Date: 6/19/2017

Customer:

Attention:

Submitted by: FAREEDA DUDEKULA



284TTDCA6095

Submittal

Data @ 575 V

## Motor Load Data

Load	0%	25%	50%	75%	100%	115%	125%	LR	
Current (Amps)	7.9	8.6	10.4	12.9	16.0	18.0	19.6	76.8	
Torque (ft-lb)	0.00	16.5	33.0	49.8	66.5	77.0	83.6	108	
RPM	1200	1195	1190	1185	1180	1,178	1175	0	
Efficiency (%)		86.5	90.2	91.7	91.7	91.0	90.2		
P.F. (%)	5.0	37.0	59.0	70.5	76.0	78.0	78.5	0.0	

## Motor Speed Data

	LR	Pull-Up	BD	Rated	Idle																																																																																		
Speed (RPM)	0	600	1125	1180	1200																																																																																		
Current (Amps)	76.8	69.2	46.4	16.0	7.9																																																																																		
Torque (ft-lb)	108	97.0	146	66.5	0.00																																																																																		
<div><div><div>Efficiency (%)</div><div>P.F. (%)</div><div>Current (Amps)</div></div><table><caption>Graph Data Points (Estimated)</caption><thead><tr><th>Load (%)</th><th>Efficiency (%)</th><th>P.F. (%)</th><th>Current (Amps)</th></tr></thead><tbody><tr><td>25</td><td>86</td><td>3.5</td><td>10.5</td></tr><tr><td>50</td><td>90</td><td>10</td><td>12.5</td></tr><tr><td>75</td><td>92</td><td>15</td><td>15.5</td></tr><tr><td>100</td><td>91</td><td>17</td><td>18.5</td></tr><tr><td>125</td><td>90</td><td>18</td><td>20.5</td></tr></tbody></table></div> <div><table><tr><td>HP</td><td>15.0</td></tr><tr><td>Sync. RPM</td><td>1200</td></tr><tr><td>Frame</td><td>284</td></tr><tr><td>Enclosure</td><td>DP</td></tr><tr><td>Construction</td><td>TDC</td></tr><tr><td>Voltage</td><td>575 V</td></tr><tr><td>Frequency</td><td>60 Hz</td></tr><tr><td>Design</td><td>B</td></tr><tr><td>LR Code letter</td><td>F</td></tr><tr><td>Service Factor</td><td>1.15</td></tr><tr><td>Temp Rise @ FL</td><td>45 °C</td></tr><tr><td>Duty</td><td>CONT</td></tr><tr><td>Ambient</td><td>40 °C</td></tr><tr><td>Elevation</td><td>1,000 feet</td></tr><tr><td>Rotor/Shaft wk²</td><td>5.0 Lb-Ft²</td></tr><tr><td>Ref Wdg</td><td>CHT28460002 NONE</td></tr><tr><td>Sound Pressure @ 1M</td><td>65 dBA</td></tr><tr><td>VFD Rating</td><td>VARIABLE 10:1</td></tr><tr><td>Outline Dwg</td><td>SS620573</td></tr><tr><td>Conn. Diag</td><td>EE7300</td></tr><tr><td colspan="2">Additional Specifications:</td></tr><tr><td colspan="2">0</td></tr><tr><td colspan="2">0</td></tr><tr><td colspan="2">EQUIV CKT (OHMS / PHASE)</td></tr><tr><td>R1</td><td>R2</td><td>X1</td><td>X2</td><td>Xm</td></tr><tr><td>0.6730</td><td>0.3220</td><td>1.8100</td><td>3.6740</td><td>41.2550</td></tr></table></div>						Load (%)	Efficiency (%)	P.F. (%)	Current (Amps)	25	86	3.5	10.5	50	90	10	12.5	75	92	15	15.5	100	91	17	18.5	125	90	18	20.5	HP	15.0	Sync. RPM	1200	Frame	284	Enclosure	DP	Construction	TDC	Voltage	575 V	Frequency	60 Hz	Design	B	LR Code letter	F	Service Factor	1.15	Temp Rise @ FL	45 °C	Duty	CONT	Ambient	40 °C	Elevation	1,000 feet	Rotor/Shaft wk²	5.0 Lb-Ft²	Ref Wdg	CHT28460002 NONE	Sound Pressure @ 1M	65 dBA	VFD Rating	VARIABLE 10:1	Outline Dwg	SS620573	Conn. Diag	EE7300	Additional Specifications:		0		0		EQUIV CKT (OHMS / PHASE)		R1	R2	X1	X2	Xm	0.6730	0.3220	1.8100	3.6740	41.2550
						Load (%)	Efficiency (%)	P.F. (%)	Current (Amps)																																																																														
						25	86	3.5	10.5																																																																														
						50	90	10	12.5																																																																														
						75	92	15	15.5																																																																														
						100	91	17	18.5																																																																														
						125	90	18	20.5																																																																														
						HP	15.0																																																																																
						Sync. RPM	1200																																																																																
						Frame	284																																																																																
						Enclosure	DP																																																																																
						Construction	TDC																																																																																
						Voltage	575 V																																																																																
						Frequency	60 Hz																																																																																
						Design	B																																																																																
						LR Code letter	F																																																																																
						Service Factor	1.15																																																																																
Temp Rise @ FL	45 °C																																																																																						
Duty	CONT																																																																																						
Ambient	40 °C																																																																																						
Elevation	1,000 feet																																																																																						
Rotor/Shaft wk²	5.0 Lb-Ft²																																																																																						
Ref Wdg	CHT28460002 NONE																																																																																						
Sound Pressure @ 1M	65 dBA																																																																																						
VFD Rating	VARIABLE 10:1																																																																																						
Outline Dwg	SS620573																																																																																						
Conn. Diag	EE7300																																																																																						
Additional Specifications:																																																																																							
0																																																																																							
0																																																																																							
EQUIV CKT (OHMS / PHASE)																																																																																							
R1	R2	X1	X2	Xm																																																																																			
0.6730	0.3220	1.8100	3.6740	41.2550																																																																																			

## Speed -Torque Curve

