

# PRODUCT INFORMATION PACKET

**marathon®**  
Motors

Model No: 284TTDBD6008

Catalog No: GT0569

30 HP Close-Coupled Pump Motor, 3 phase, 3600 RPM, 575 V, 284JM Frame, ODP

Close-Coupled Pump Motors



Regal and Marathon are trademarks of Regal Rexnord Corporation or one of its affiliated companies.  
©2021 Regal Rexnord Corporation, All Rights Reserved. MC017097E

**RegalRexnord**

## Nameplate Specifications

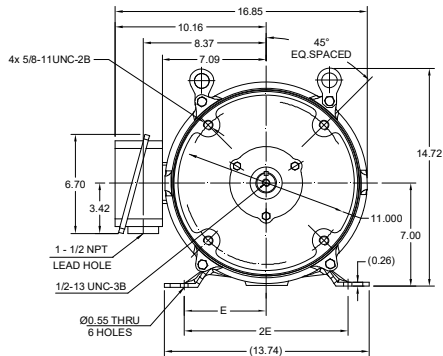
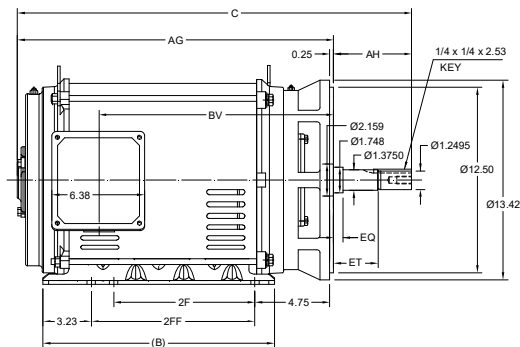
Output HP	30 Hp	Output KW	22.4 kW
Frequency	60 Hz	Voltage	575 V
Current	28.6 A	Speed	3562 rpm
Service Factor	1.15	Phase	3
Efficiency	91.7 %	Power Factor	87
Duty	Continuous	Insulation Class	F
Design Code	B	KVA Code	F
Frame	284JM	Enclosure	Drip Proof
Thermal Protection	No	Ambient Temperature	40 °C
Drive End Bearing Size	6311	Opp Drive End Bearing Size	6211
UL	Recognized	CSA	Y
CE	Y	IP Code	22
Number of Speeds	1		

## Technical Specifications

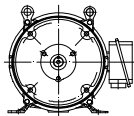
Electrical Type	Squirrel Cage Inverter Rated	Starting Method	Line Or Inverter
Poles	2	Rotation	Reversible
Resistance Main	.358 Ohms	Mounting	Rigid Base
Motor Orientation	Horizontal	Drive End Bearing	Ball
Opp Drive End Bearing	Ball	Frame Material	Rolled Steel
Shaft Type	JM	Overall Length	26.58 in
Frame Length	12.59 in	Shaft Diameter	1.249 in
Shaft Extension	5.25 in	Assembly/Box Mounting	F1/F2 CAPABLE
Inverter Load	VARIABLE 10:1		
Connection Drawing	EE7300	Outline Drawing	SS620823-100



DASH NO.	B	C	E	2E	2F	2FF	AG	AH	BV	EQ	ET	MOUNTING	FRAME
100	15.55	26.49	5.50	11.00	9.50	11.00	21.24	5.248	15.80	0.62	2.99	F1 OR F2	284JM
200		27.86					22.61		17.18				286JM



F2 VIEW



DRAWING REVISION C	REVISION BY VS	REV DATE/ E DATE 08-03-2021
ECO CR-0001300	APPROVED BY GNK	DATE 08-03-2021
ECO DESCRIPTION DRAWING UPDATED		
COPYRIGHT (PER REVISION DATE) REGAL BELOIT AMERICA, INC. ALL RIGHTS RESERVED. IMPROPER PART AND COMPONENT INFORMATION. THIS DOCUMENT IS THE PROPERTY OF REGAL BELOIT AMERICA, INC. FOR PARTS AND COMPONENTS. OWNERS PROPRIETARY INFORMATION. ANY PERSONAL INFORMATION OR OTHER DATA BEING USED IS SUBJECT TO ANY PERSONAL INFORMATION DISCLOSURE. DISCLOSURES AND/OR LOSS. SUBJECT AS EXPRESSLY APPROVED IN WRITING IN ADVANCE BY OWNER. THIS DOCUMENT SHALL BE RETURNED TO OWNER UPON REQUEST. IT MAY BE SUBJECT TO CERTAIN INSTRUCTIONS UNDER APPLICABLE REPORT CONTROLS, LAWS AND REGULATIONS.		

PRIMARY DIMENSIONS ARE INCH  
MIL DIMENSIONS IN (BRACKETS)  
ARE FOR REFERENCE ONLY

DRAWN BY VS	DATE 12-02-2021
APPROVED BY GNK	DATE 12-02-2021
REFERENCE	
THIRD ANGLE PROJECTION	

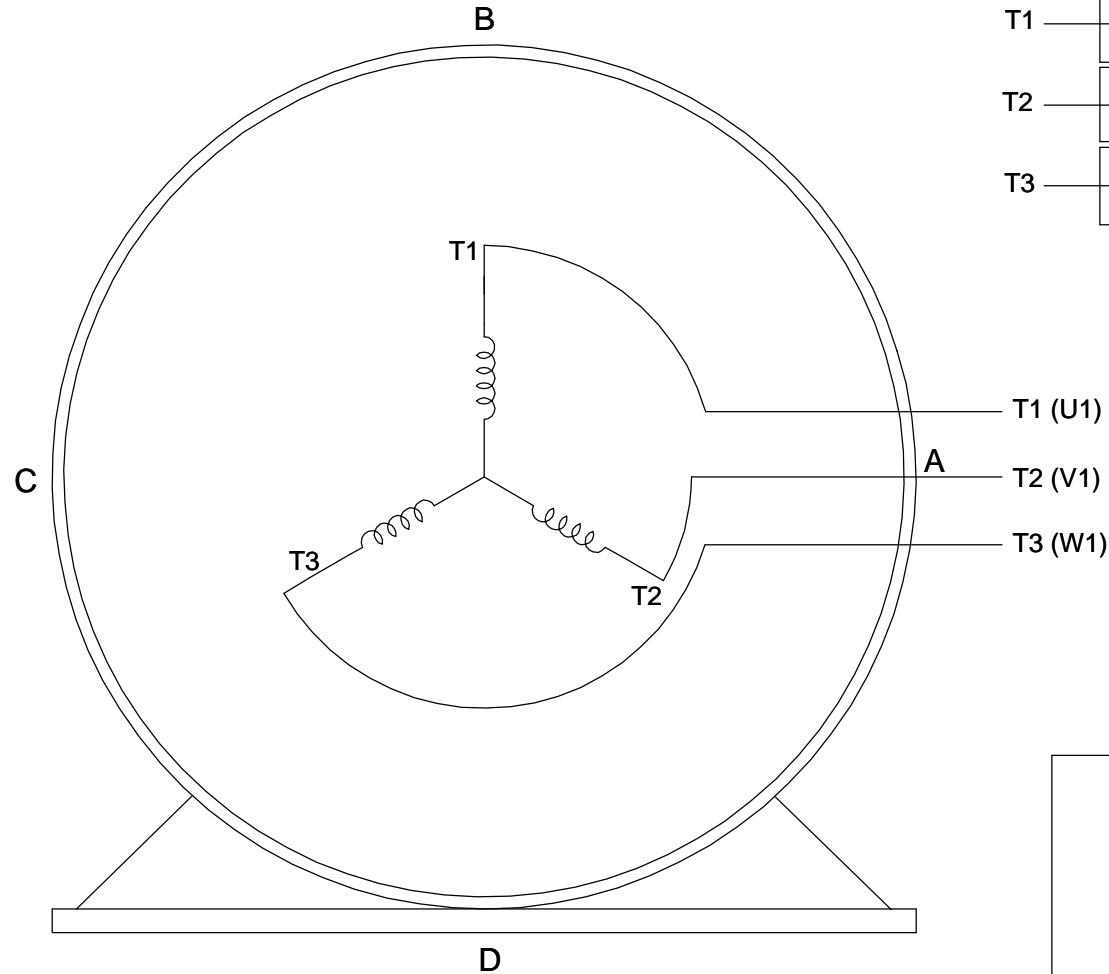
Regal Beloit America, Inc.

DESCRIPTION OUTLINE 284/286JM FR NEMA ODP RS	PROCESS/FINISH
SIZE B	DRAWING NUMBER SS620823
SHEET 1 OF 1	

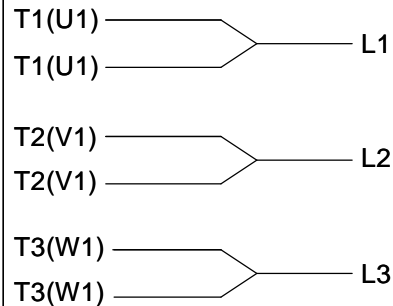
# THREE PHASE - SINGLE VOLTAGE MOTOR - CONDUIT BOX @ 'A'

TO REVERSE ROTATION:  
INTERCHANGE ANY TWO  
LINE LEAD CONNECTIONS.

## TERMINAL BLOCK WHEN SPECIFIED



### IF MOTOR HAS 6 LEADS



A-9806 DECAL

### OPTIONAL CORD CONNECTION



## VIEW OF TERMINAL END

DRAWING REVISION AB	REVISION BY JJB	DATE 06-27-2017
ECO ECO-0125361	APPROVED BY TB	DATE 06-27-2017
ECO DESCRIPTION UPDATED TO CURRENT STANDARDS		
<small>COPYRIGHT REGAL BELOIT AMERICA, INC. ALL RIGHTS RESERVED.          PROPRIETARY AND CONFIDENTIAL INFORMATION - THIS DOCUMENT IS THE PROPERTY OF          REGAL BELOIT AMERICA, INC. ("OWNER") AND CONTAINS OWNER'S PROPRIETARY          INFORMATION. ANY PERSON, CORPORATION OR OTHER FIRM RECEIVING IT IS DEEMED,          BY RECEIVING IT, TO AGREE THAT IT, AND/OR ANY PART OF IT, SHALL NOT BE DISCLOSED          TO ANY PERSON, CORPORATION OR OTHER ENTITY, DUPLICATED, AND/OR USED, EXCEPT          AS EXPRESSLY APPROVED IN WRITING IN ADVANCE BY OWNER. THIS DOCUMENT SHALL          BE RETURNED TO OWNER UPON REQUEST. IT MAY BE SUBJECT TO CERTAIN          RESTRICTIONS UNDER APPLICABLE EXPORT CONTROL LAWS AND REGULATIONS.</small>		

DRAWN BY DA
DATE 03-26-1993
APPROVED BY TB
DATE 03-26-1993
REFERENCE

THIRD ANGLE  
PROJECTION



Regal Beloit America, Inc.

### DESCRIPTION

**CONNECTION DIAGRAM**  
EXTERNAL - SINGLE VOLTAGE - 3Ø MOTOR

### MATERIAL

### PROCESS/FINISH

SIZE  
A

DRAWING NUMBER

EE7300

SHEET  
1 OF 1

Uncontrolled Copy



**P.O. BOX 8003  
WAUSAU, WI 54401-8003  
PH. 715-675-3311**

**CERTIFICATION DATA SHEET****CUSTOMER:****CUSTOMER PO#:****ORDER #:****MODEL #:** 284TTDBD6008 AA**CONN. DIAGRAM:** EE7300**CUSTOMER PART****#:****OUTLINE:** SS620823-284**MOUNTING:** F1/F2 CAPABLE**WINDING #:** HE31802007 3**TYPICAL MOTOR PERFORMANCE DATA**

HP	kW	SYNC. RPM	F.L. RPM	FRAME	ENCLOSURE	KVA CODE	DESIGN
30	22.4	3600	3562	284JM	DP	F	B

PH	Hz	VOLTS	AMPS	START TYPE	DUTY	INSL	S.F.	AMB°C
3	60	575	28.6	LINE OR INVERTER	CONTINUOUS	F7	1.15	40

<b>FULL LOAD EFF:</b>	91.7	<b>3/4 LOAD EFF:</b>	91.7	<b>1/2 LOAD EFF:</b>	90.6	<b>GTD. EFF</b>		<b>ELEC. TYPE</b>
<b>FULL LOAD PF:</b>	87	<b>3/4 LOAD PF:</b>	83	<b>1/2 LOAD PF:</b>	75	91		SQ CAGE INV RATED

<b>F.L. TORQUE</b>		<b>LOCKED ROTOR AMPS</b>		<b>L.R. TORQUE</b>		<b>B.D. TORQUE</b>		<b>F.L. RISE°C</b>
44.2 LB-FT		149.6		69 LB-FT 150 %		99 LB-FT 225 %		55

<b>SOUND PRESSURE @ 3 FT.</b>		<b>SOUND POWER</b>		<b>ROTOR WK^2</b>		<b>MAX. WK^2</b>		<b>SAFE STALL TIME</b>		<b>STARTS / HOUR</b>		<b>APPROX. MOTOR WGT</b>
78 dBA		88 dBA		3 LB-FT^2		35 LB-FT^2		15 SEC.		2		375 LBS.

**\*\*\* SUPPLEMENTAL INFORMATION \*\*\***

<b>DE BRACKET TYPE</b>	<b>ODE BRACKET TYPE</b>	<b>MOUNT TYPE</b>	<b>ORIENTATION</b>	<b>SEVERE DUTY</b>	<b>HAZARDOUS LOCATION</b>	<b>DRIP COVER</b>	<b>SCREENS</b>	<b>PAINT</b>
C-FACE	STANDARD	RIGID	HORIZONTAL	FALSE	NONE	FALSE	NONE	BLUE (ENAMEL)

<b>BEARINGS</b>		<b>GREASE</b>	<b>SHAFT TYPE</b>	<b>SPECIAL DE</b>	<b>SPECIAL ODE</b>	<b>SHAFT MATERIAL</b>	<b>FRAME MATERIAL</b>
<b>DE</b>	<b>ODE</b>						
BALL	BALL	POLYREX EM	JM	NONE	NONE	1045 HOT ROLLED (C-204)	ROLLED STEEL
6311	6211						

<b>THERMO-PROTECTORS</b>				<b>THERMISTORS</b>	<b>CONTROL</b>	<b>SPACE HEATERS</b>
<b>THERMOSTATS</b>	<b>PROTECTORS</b>	<b>WDG RTDs</b>	<b>BRG RTDs</b>			
NONE	NOT	NONE	NONE	NONE	FALSE	NONE VOLTS

\*

N

O

T

E

S

\*

**INVERTER TORQUE:** VARIABLE 20:1**INV. HP SPEED RANGE:** NONE**ENCODER:** NONE

NONE NONE

NONE NONE PPR

**BRAKE:** NONE NONE

NONE P/N NONE

NONE NONE

NONE FT-LB NONE V NONE Hz

**PREPARED BY:** Fareeda Dudekula**DATE:** 05/04/2018 05:09:12 AM

FORM 3531 REV.3 02/07/99

\*\* Subject to change without notice.

