

PRODUCT INFORMATION PACKET

marathon®
Motors

Model No: 284TSTD6003

Catalog No: U292

30 HP General Purpose Motor, 3 phase, 3600 RPM, 575 V, 284TS Frame, ODP
General Purpose Motors



Regal and Marathon are trademarks of Regal Rexnord Corporation or one of its affiliated companies.
©2021 Regal Rexnord Corporation, All Rights Reserved. MC017097E

RegalRexnord

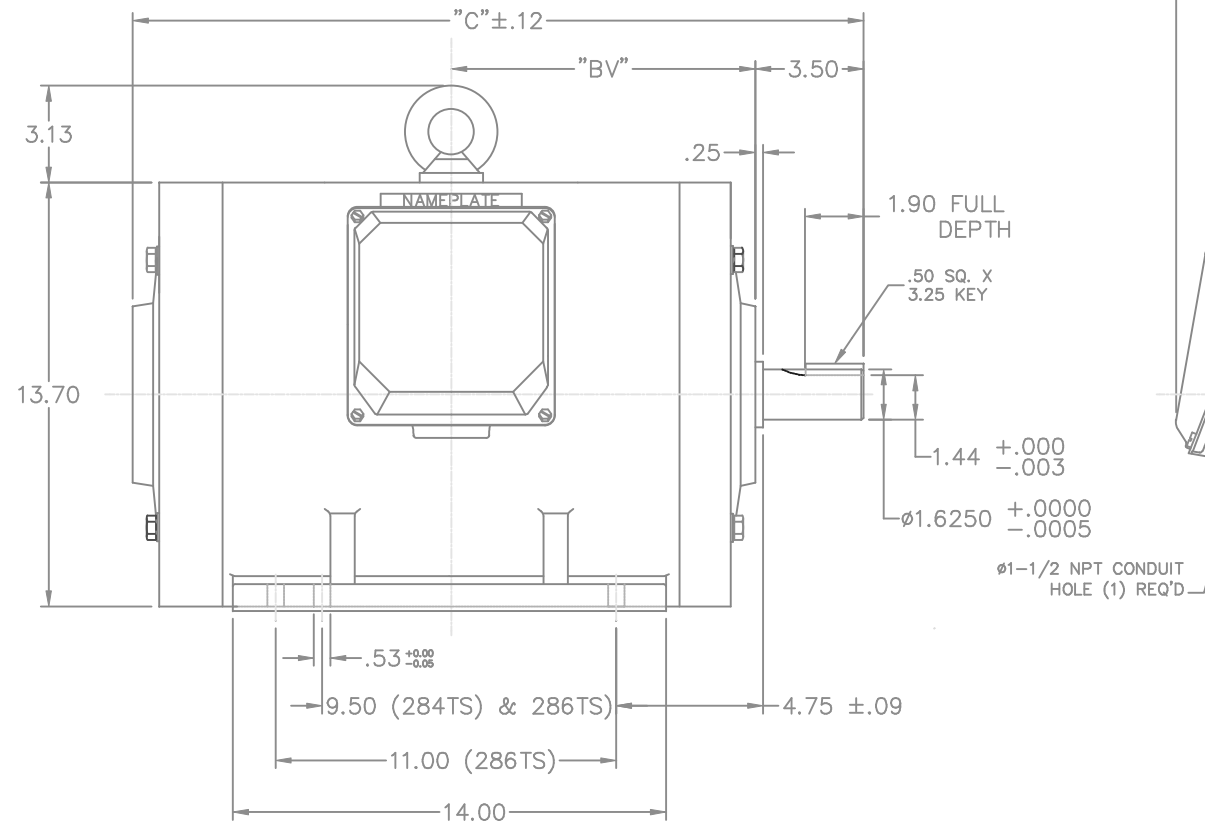
Nameplate Specifications

Output HP	30 Hp	Output KW	22.4 kW
Frequency	60 Hz	Voltage	575 V
Current	27.0 A	Speed	3550 rpm
Service Factor	1.15	Phase	3
Efficiency	92.4 %	Power Factor	89
Duty	Continuous	Insulation Class	F
Design Code	B	KVA Code	G
Frame	284TS	Enclosure	Drip Proof
Thermal Protection	No	Ambient Temperature	40 °C
Drive End Bearing Size	6312	Opp Drive End Bearing Size	6211
UL	Recognized	CSA	Y
CE	Y	IP Code	12
Number of Speeds	1		

Technical Specifications

Electrical Type	Squirrel Cage Inverter Rated	Starting Method	Line Or Inverter
Poles	2	Rotation	Reversible
Resistance Main	.256 Ohms	Mounting	Rigid Base
Motor Orientation	Horizontal	Drive End Bearing	Ball
Opp Drive End Bearing	Ball	Frame Material	Cast Iron
Shaft Type	TS	Overall Length	22.17 in
Shaft Diameter	1.625 in	Shaft Extension	3.5 in
Assembly/Box Mounting	F1/F2 Capable		
Outline Drawing	16955360ME	Connection Drawing	005190.01

This is an uncontrolled document once printed or downloaded and is subject to change without notice. Date Created:10/12/2021



FRAME DESIGN	"C"	"BV"
284TS	22.17	9.11
286TS	23.62	9.83

3 of 6

CERTIFICATION DATA SHEET

Model#: 284TSTDC6003 AA
 CONN. DIAGRAM: 51090.01
 OUTLINE: 16955360ME

WINDING#: T14502007 NONE 4
 ASSEMBLY: F1/F2 CAPABLE

TYPICAL MOTOR PERFORMANCE DATA

HP	KW	SYNC. RPM	F.L. RPM	FRAME	ENCLOSURE	KVA CODE	DESIGN
30	22.4	3600	3550	284TS	DP	G	B

PH	Hz	VOLTS	FL AMPS	START TYPE	DUTY	INSL	S.F	AMB°C	ELEVATION
3	60	575	27	LINE OR INVERTER	CONTINUOUS	F2	1.15/1.0	40	3300

FULL LOAD EFF: 92.4	3/4 LOAD EFF: 91.7	1/2 LOAD EFF: 90.2	GTD. EFF	ELEC. TYPE	NO LOAD AMPS
FULL LOAD PF: 89	3/4 LOAD PF: 88.5	1/2 LOAD PF: 85	90.2	SQ CAGE INV RATED	6.5

F.L. TORQUE	LOCKED ROTOR AMPS	L.R. TORQUE	B.D. TORQUE	F.L. RISE°C
44.5 LB-FT	168	72.5 LB-FT 163	117.5 LB-FT 264	45

SOUND PRESSURE @ 3 FT.	SOUND POWER	ROTOR WK^2	MAX. WK^2	SAFE STALL TIME	STARTS /HOUR	APPROX. MOTOR WGT
78 dBA	88 dBA	- LB-FT^2	- LB-FT^2	15 SEC.	-	396 LBS.

*** SUPPLEMENTAL INFORMATION ***

DE BRACKET TYPE	ODE BRACKET TYPE	MOUNT TYPE	ORIENTATION	SEVERE DUTY	HAZARDOUS LOCATION	DRIP COVER	SCREENS	PAINT
STANDARD	STANDARD	RIGID	HORIZONTAL	FALSE	NONE	FALSE	NONE	BLUE (ENAMEL)

BEARINGS		GREASE	SHAFT TYPE	SPECIAL DE	SPECIAL ODE	SHAFT MATERIAL	FRAME MATERIAL
DE	OPE						
BALL	BALL						
6312	6211	POLYREX EM	TS	NONE	NONE	1045 HOT ROLLED (C-204)	CAST IRON

THERMO-PROTECTORS				THERMISTORS	CONTROL	SPACE /n HEATERS
THERMOSTATS	PROTECTORS	WDG RTDs	BRG RTDs			
NONE	NOT	NONE	NONE	NONE	FALSE	NONE VOLTS

If Inverter equals NONE, contact factory for further information

* N O T E S *	INVERTER TORQUE: CONSTANT 10:1		
	INV. HP SPEED RANGE: 1.5 X BASE SPEED		
	ENCODER: NONE		
	NONE NONE		
	NONE NONE PPR		
	BRAKE: NONE NONE		
	NONE P/N NONE		
	NONE NONE		
- FT-LB		NONE V	NONE Hz

DATE: 06/23/2017 07:41:42 AM
 FORM 3531 REV.3 02/07/99
 ** Subject to change without notice.

Data Sheet

Date: 19-06-2017

Customer:

Attention:

Submitted by: FAREEDA DUDEKULA



284TSTD6003

Submittal

Data @ 575 V

Motor Load Data

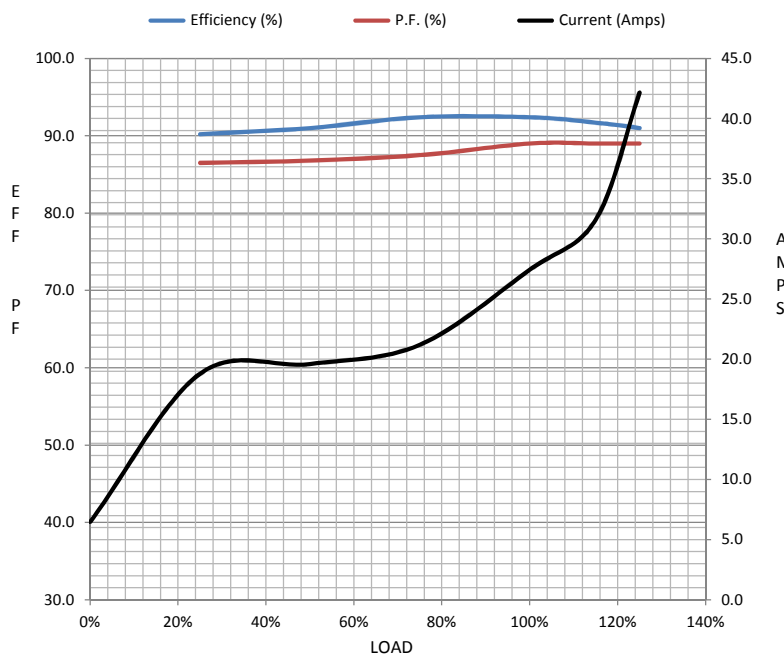
Load	0%	25%	50%	75%	100%	115%	125%	LR	
Current (Amps)	6.5	18.8	19.6	21.2	27.4	31.6	42.2	174	
Torque (ft-lb)	0.00	29.5	30.9	33.8	44.5	51.2	56.2	82.0	
RPM	3600	3575	3570	3565	3550	3,540	3535	0	
Efficiency (%)		90.2	91.0	92.4	92.4	91.7	91.0		
P.F. (%)	9.0	86.5	86.8	87.5	89.0	89.0	89.0	36.0	

Motor Speed Data

	LR	Pull-Up	BD	Rated	Idle
Speed (RPM)	0	1800	3350	3550	3600
Current (Amps)	174	160	114	27.4	6.5
Torque (ft-lb)	82.0	67.0	125	44.5	0.00

Information Block

HP	30.0			
Sync. RPM	3600			
Frame	284			
Enclosure	DP			
Construction	TDC			
Voltage	575 V			
Frequency	60 Hz			
Design	A			
LR Code letter	G			
Service Factor	1.15			
Temp Rise @ FL	45 ° C			
Duty	CONT			
Ambient	40 ° C			
Elevation	1,000 feet			
Rotor/Shaft wk ²	0.00 Lb-Ft ²			
Ref Wdg	T14502007 NONE			
Sound Pressure @ 1M	78 dBA			
VFD Rating	CONSTANT 10:1			
Outline Dwg	16955360ME			
Conn. Diag	51090.01			
Additional Specifications:				
0				
365THFS8036				
EQUIV CKT (OHMS / PHASE)				
R1	R2	X1	X2	Xm
0.0000	0.0000	0.0000	0.0000	0.0000



Speed -Torque Curve

