

PRODUCT INFORMATION PACKET



Model No: 284TSTDBD6000
Catalog No: GT0869
30,3600,DP,284TS,3/60/200

Miscellaneous

Regal and Marathon are trademarks of Regal Rexnord Corporation or one of its affiliated companies.
©2021 Regal Rexnord Corporation, All Rights Reserved. MC017097E





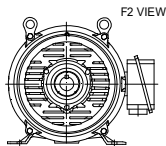
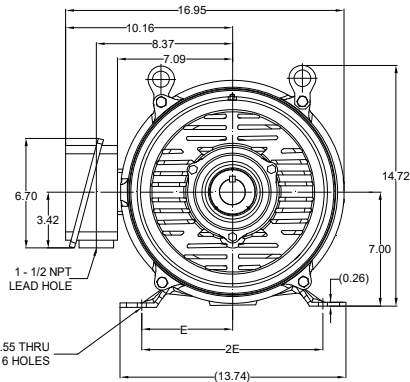
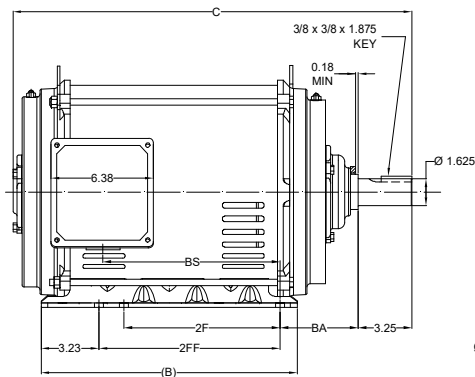
Nameplate Specifications

Technical Specifications

Connection Drawing	EE7300U	Outline Drawing	SS620709-100
--------------------	---------	-----------------	--------------

This is an uncontrolled document once printed or downloaded and is subject to change without notice. Date Created:12/30/2021

DASH NO.	B	C	E	2E	2F	2FF	BA	BS	MOUNTING	FRAME
100	15.55	24.34	5.50	11.00	9.50	11.00	4.75	10.80	F1 OR F2	284TS
200		25.72						12.18		286TS



DRAWING REVISION C	REVISION BY VS	REV DATE/ E DATE 22-02-2021
ECO CR-0001300	APPROVED BY GNK	DATE 22-02-2021
ECO DESCRIPTION BS VALUE CORRECTION		
<small> COPYRIGHT (PER REVISION DATE) REGAL BELOIT AMERICA, INC. ALL RIGHTS RESERVED. INVENTOR: TONY AND CHRISTOPHER, INFORMATION: THIS DOCUMENT IS THE PROPERTY OF REGAL BELOIT AMERICA, INC. (OWNER) AND CONTAINS OWNER'S PROPRIETARY INFORMATION. ANY PERSONAL COPIATION OR USE OF THIS DOCUMENT IS STRICTLY PROHIBITED. IT IS AGREED THAT IT AND/OR ANY PART OF IT SHALL NOT BE DISCLOSED TO ANY PERSON, CORPORATION OR OTHER ENTITY, UNLESS AUTHORIZED IN WRITING BY AN EMPLOYEE OF REGAL BELOIT AMERICA, INC. (OWNER). THIS DOCUMENT SHALL BE RETURNED TO OWNER UPON REQUEST. IT MAY BE SUBJECT TO CHANGING INSTRUCTIONS UNDER APPLICABLE REPORTING, CONTROL, LAWS AND REGULATIONS. </small>		

PRIMARY DIMENSIONS ARE INCH
DIMENSIONS IN [BRACKETS]
ARE FOR REFERENCE ONLY

DRAWN BY VS	DATE 12-02-2021
APPROVED BY GNK	DATE 12-02-2021
REFERENCE	
THIRD ANGLE PROJECTION	

Regal Beloit America, Inc.

DESCRIPTION OUTLINE 284/286TS FR NEMA COP RS	PROCESS/FINISH
SIZE B	DRAWING NUMBER SS620709
	SHEET 1 OF 1

IF MOTOR HAS 9 LEADS



IF MOTOR HAS 6 LEADS

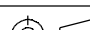


A-9806 DECAL IF CALLED FOR

IF MOTOR HAS 12 LEADS



VIEW OF TERMINAL END

DRAWING REVISION L	REVISION BY AJW	DATE 05-04-2015	TOLERANCES UNLESS OTHERWISE SPECIFIED: <div><div>DEC.</div><div>INCH</div><div>mm</div><div>ANGLE</div></div> <div><div>.X</div><div>±0.1</div><div>[±2.5]</div><div>±7' 30"</div></div> <div><div>.XX</div><div>±0.02</div><div>[±0.51]</div></div> <div><div>XXX</div><div>±0.005</div><div>[±0.127]</div></div> <div><div>.XXXX</div><div>±0.0005</div><div>[±0.0127]</div></div> <div>REMOVE BURRS & BREAK SHARP EDGES: .003/.015 [.076/.381] X 45°</div> <div>CORNER FILLETS: R.02 [.51]</div> <div>MACHINED SURFACES: 200</div> <div>INCH</div> <div>5.1</div> <div>mm</div> <div>mm SHOWN IN [BRACKETS]</div>				DRAWN BY DRS	<div><div>REGAL™</div><div>Regal Beloit America, Inc.</div></div>			
ECO ECO-0077067	APPROVED BY EWH	DATE 05-05-2015					DATE 09-27-1996	DESCRIPTION			
ECO DESCRIPTION UPDATED TO SOLIDWORKS			APPROVED BY GK	CONN DIAGRAM-EXTERNAL 3Ø SINDLE VOLTAGE							
<div><div>COPYRIGHT REGAL BELOIT AMERICA, INC. ALL RIGHTS RESERVED.</div><div>PROPRIETARY AND CONFIDENTIAL INFORMATION - THIS DOCUMENT IS THE PROPERTY OF REGAL BELOIT AMERICA, INC. ("OWNER") AND CONTAINS OWNER'S PROPRIETARY INFORMATION. ANY PERSON, CORPORATION OR OTHER FIRM RECEIVING IT IS DEEMED, BY RECEIVING IT, TO AGREE THAT IT, AND/OR ANY PART OF IT, SHALL NOT BE DISCLOSED TO ANY PERSON, CORPORATION OR OTHER ENTITY, DUPLICATED, AND/OR USED, EXCEPT AS EXPRESSLY APPROVED IN WRITING IN ADVANCE BY OWNER. THIS DOCUMENT SHALL BE RETURNED TO OWNER UPON REQUEST. IT MAY BE SUBJECT TO CERTAIN RESTRICTIONS UNDER APPLICABLE EXPORT CONTROL LAWS AND REGULATIONS.</div></div>			DATE 09-30-1996	MATERIAL		PROCESS/FINISH					
			REFERENCE								
			THIRD ANGLE PROJECTION		SIZE A	DRAWING NUMBER EE7300U		SHEET 1 OF 1			