

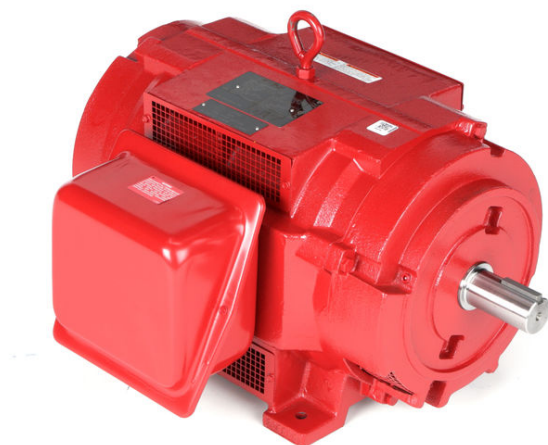
# PRODUCT INFORMATION PACKET

**marathon®**  
Motors

Model No: 284TSTDBD4008

Catalog No: U1103

30 HP Fire Pump Motor, 3 phase, 3600 RPM, 575 V, 284TS Frame, ODP  
Fire Pump Motors



Regal and Marathon are trademarks of Regal Rexnord Corporation or one of its affiliated companies.  
©2021 Regal Rexnord Corporation, All Rights Reserved. MC017097E

**RegalRexnord**

**Nameplate Specifications**

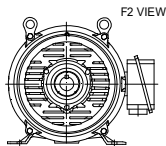
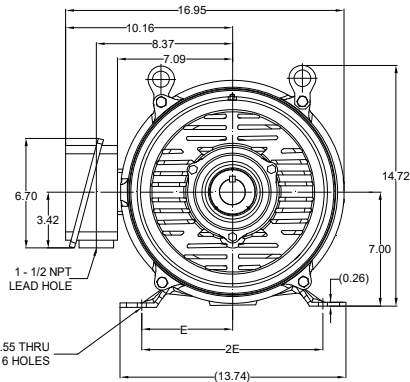
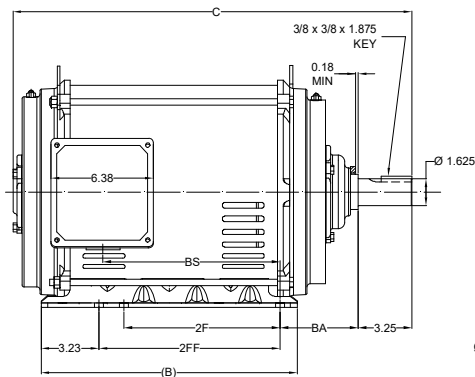
Output HP	30 Hp	Output KW	22.4 kW
Frequency	60 Hz	Voltage	575 V
Current	28.8 A	Speed	3560 rpm
Service Factor	1.15	Phase	3
Efficiency	91 %	Power Factor	86
Duty	Continuous	Insulation Class	F
Design Code	B	KVA Code	F
Frame	284TS	Enclosure	Drip Proof
Thermal Protection	No	Ambient Temperature	50 °C
Drive End Bearing Size	6211	Opp Drive End Bearing Size	6211
UL	Listed	CSA	Y
CE	Y	IP Code	23
Number of Speeds	1		

**Technical Specifications**

Electrical Type	Squirrel Cage Induction Run	Starting Method	Part Wdg Start & Wye Start Delta Run
Poles	2	Rotation	Reversible
Resistance Main	.38 Ohms	Mounting	Rigid Base
Motor Orientation	Horizontal	Drive End Bearing	Ball
Opp Drive End Bearing	Ball	Frame Material	Rolled Steel
Shaft Type	TS	Overall Length	24.34 in
Frame Length	12.59 in	Shaft Diameter	1.625 in
Shaft Extension	3.25 in	Assembly/Box Mounting	F1/F2 CAPABLE
Outline Drawing	SS620709-284TS	Connection Drawing	EE7300BH

This is an uncontrolled document once printed or downloaded and is subject to change without notice. Date Created:10/06/2021

DASH NO.	B	C	E	2E	2F	2FF	BA	BS	MOUNTING	FRAME
100	15.55	24.34	5.50	11.00	9.50	11.00	4.75	10.80	F1 OR F2	284TS
200		25.72						12.18		286TS



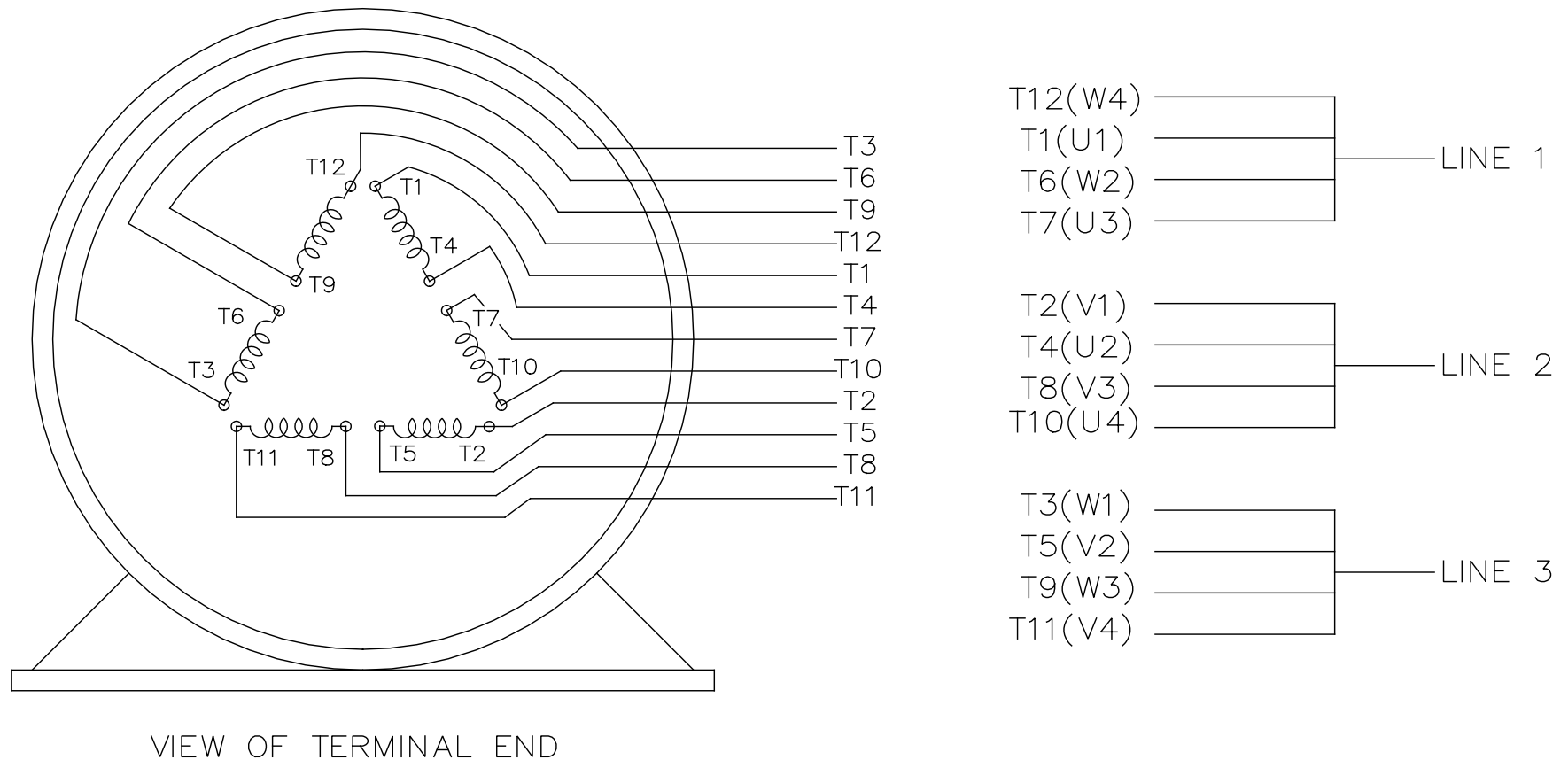
DRAWING REVISION C	REVISION BY VS	REV DATE/ E DATE 22-02-2021
ECD CR-0001300	APPROVED BY GNK	DATE 22-02-2021
ECO DESCRIPTION BS VALUE CORRECTION		
<small>           COPYRIGHT (PER REVISION DATE) REGAL BELOIT AMERICA, INC. ALL RIGHTS RESERVED.            IMPRINT THAT AND CONSENTING INFORMATION. THIS DOCUMENT IS THE PROPERTY OF            REGAL BELOIT AMERICA, INC. (OWNER) AND CONTAINS OWNER'S PROPRIETARY            INFORMATION. ANY PERSONAL INFORMATION OR OTHER DATA RECEIVED IS GRANTED,            BY RECEIVING IT, TO AGREE THAT IT AND/OR ANY PART OF IT SHALL NOT BE DISCLOSED            TO ANY PERSON, CORPORATION OR OTHER ENTITY, UNLESS IT IS FIRST WRITTEN, SIGNED            AS EXPRESSLY APPROVED IN WRITING IN ADVANCE BY OWNER. THIS DOCUMENT SHALL            BE RETURNED TO OWNER UPON REQUEST. IT MAY BE SUBJECT TO CHANGING            INSTRUCTIONS UNDER APPLICABLE REPORT CONTROL LAWS AND REGULATIONS.         </small>		

PRIMARY DIMENSIONS ARE INCH  
DIMENSIONS IN [BRACKETS]  
ARE FOR REFERENCE ONLY

DRAWN BY VS	DATE 12-02-2021
APPROVED BY GNK	DATE 12-02-2021
REFERENCE	THIRD ANGLE PROJECTION

**Regal Beloit America, Inc.**

DESCRIPTION <b>OUTLINE</b> 284/286TS FR NEMA COP RS	PROCESS/FINISH
SIZE B	DRAWING NUMBER <b>SS620709</b>
SHEET 1 OF 1	



				TOLERANCES UNLESS SPECIFIED		 REGAL - BELOIT CORPORATION	DRAWN RJW 02-11-2005									
				DEC.	INCHES		CHK	ML	02-11-2005							
				.X	±.1		APPD	GK	02-11-2005							
				.XX	±.02	TITLE CONNECTION DIAGRAM 12 LEAD- SINGLE VOLTAGE				SCALE						
D	CHANGED TO REGAL TITLE BLOCK	ECO-0108299	WGJ 08/22/2016	EMH	.XXX	±.005					REF					
1	ADDED IEC TERMINAL MARKINGS	CN 41429	JJB 05/24/2007	ML	.XXXX	±.0005	MAT'L.				FMF					
NO.	REVISION		BY & DATE	CHK	ANG	±7'30"	FINISH				PREV					
THIS DRAWING IN DESIGN AND DETAIL IS OUR PROPERTY AND MUST NOT BE USED EXCEPT IN CONNECTION WITH OUR WORK ALL RIGHTS OF DESIGN AND INVENTION ARE RESERVED THIS IS AN ELECTRONICALLY GENERATED DOCUMENT - DO NOT SCALE THIS PRINT				RFP		02-11-2005		CAD FILE		ee7300bh		SIZE	DRAWING NO.	PAGE	OF	REV.
				DIST		LB						A	EE7300BH			



P.O. BOX 8003  
WAUSAU, WI 54401-8003  
PH. 715-675-3311

DATA VOLTS: 460

### CERTIFICATION DATA SHEET

CUSTOMER: \_\_\_\_\_ CUSTOMER P.O. #: \_\_\_\_\_  
ORDER #: \_\_\_\_\_ REFERENCE MODEL #: 284TSTDDBD4008  
CONN. DIAGRAM: EE7300BH CAT #: U1103  
OUTLINE: SS620709 CUSTOMER PART #: \_\_\_\_\_  
WINDING: IE3L1802110 NONE 4 MOUNTING: F1/F2 CAPABLE  
SPEED: \_\_\_\_\_

### TYPICAL MOTOR PERFORMANCE DATA

HP	KW	SYNC RPM	FL RPM	FRAME	ENCLOSURE	TYPE	KVA CODE	DESIGN
30	22.4	3600	3560	284TS	DP	TDC	F	B

PH	HZ	VOLTS	AMPS	START TYPE	DUTY	INSL	S.F.	AMB	ELEV.
3	60	575	28.8	PWS & YDRUN	CONT	F	1.15	50	3300

F.L. EFF	91.0	3/4 LD EFF	91.0	1/2 LD EFF	89.5	GTD EFF	90.2	ELECT. TYPE	SQ CAGE IND RUN
F.L. PF	86.0	3/4 LD PF	82.0	1/2 LD PF	74.0				

F.L. TORQUE	LR AMPS @ 460 V	L.R. TORQUE	B.D. TORQUE	F.L. RISE (°C)
44.5 LB-FT	164	62.0 LB-FT 139%	110 LB-FT 247%	40

@ 3 FT.	POWER	ROTOR WK²	MAX. LOAD WK²	SAFE STALL TIME	STARTS/HOUR	MOTOR WGT
999 dBA	1008 dBA	0.00 LB-FT²	0 LB-FT²	20 SEC.	2	0 LB.

### \*\*\* SUPPLEMENTAL INFORMATION \*\*\*

DE BRACKET TYPE	ODE BRACKET TYPE	MOUNT TYPE	MOTOR ORIENTATION	SEVERE DUTY	HAZARDOUS LOCATION	DRIP COVER	SCREENS	PAINT
STANDARD	STANDARD	RIGID	HORIZONTAL	NO	NONE	NO	NONE	RED (ENAMEL)

BEARINGS	GREASE	SHAFT TYPE	SPECIAL DE	SPECIAL ODE	SHAFT MATERIAL	FRAME MATERIAL
DE ODE						
BALL BALL	POLYREX EM	TS	NONE	NONE	1045 HOT ROLLED (C-204)	ROLLED STEEL
6211 6211						

THERMOSTATS	PROTECTORS	WDG RTD's	BRG RTD's	THERMISTORS	CONTROL	SPACE HEATERS
NONE	NOT	NONE	NONE	NONE	FALSE	NA

R1 (ohms/ph)	R2 (ohms/ph)	X1 (ohms/ph)	X2 (ohms/ph)	Xm (ohms/ph)	VIBRATION (in/sec)	FLOAT
0.355	0.148	1.049	1.183	32.607	0.150	ODE

* N O T E S *		INVERTER TORQUE: NONE INV. HP SPEED RANGE: NONE
PREPARED BY: FAREEDA DUDEKULA DATE: 8/20/2018		ENCODER: NONE NONE NONE NONE PPR BRAKE: NONE NONE NONE FT-LB: NA VOLTAGE: NONE HZ: UL: NONE

FORM: 3531 REV\_4 2/27/06

## Data Sheet

Date: 12/12/2018

Customer: \_\_\_\_\_

Attention: \_\_\_\_\_

Submitted by: FAREEDA DUDEKULA



284TSTDBD4008

Submittal

Data @ 575 V

## Motor Load Data

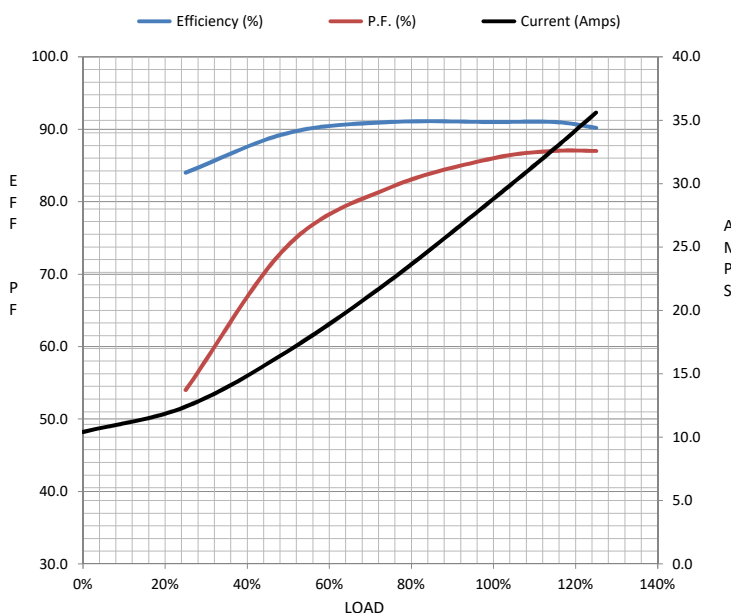
Load	0%	25%	50%	75%	100%	115%	125%	LR	
Current (Amps)	10.4	12.4	16.8	22.4	28.8	32.8	35.6	164	
Torque (ft-lb)	0.00	11.0	22.0	33.0	44.5	51.0	55.5	62.0	
RPM	3600	3590	3580	3570	3560	3550	3545	0	
Efficiency (%)		84.0	89.5	91.0	91.0	91.0	90.2		
P.F. (%)	8.0	54.0	74.0	82.0	86.0	87.0	87.0	36.0	

## Motor Speed Data

	LR	Pull-Up	BD	Rated	Idle
Speed (RPM)	0	1800	3350	3560	3600
Current (Amps)	164	144	100	28.8	10.4
Torque (ft-lb)	62.0	52.0	110	44.5	0.00

## Information Block

HP	30.0			
Sync. RPM	3600			
Frame	284			
Enclosure	DP			
Construction	TDB			
Voltage	575 V			
Frequency	60 Hz			
Design	B			
LR Code letter	F			
Service Factor	1.15			
Temp Rise @ FL	40 °C			
Duty	CONT			
Ambient	40 °C			
Elevation	1,000 feet			
Rotor/Shaft wk²	0.00 Lb-Ft²			
Ref Wdg	IE3L1802110 NONE			
Sound Pressure @ 1M	999 dBA			
VFD Rating	NONE			
Outline Dwg	SS620709			
Conn. Diag	EE7300BH			
Additional Specifications:				
0				
0				
EQUIV CKT (OHMS / PHASE)				
R1	R2	X1	X2	Xm
0.3550	0.1480	1.0490	1.1830	32.6070



## Speed -Torque Curve

