

# PRODUCT INFORMATION PACKET



Model No: 284THFPA18533  
Catalog No: 284THFPA18533  
25,1800,TEFC,284T,3/60/208

Regal and Marathon are trademarks of Regal Rexnord Corporation or one of its affiliated companies.  
©2024 Regal Rexnord Corporation, All Rights Reserved. MC017097E



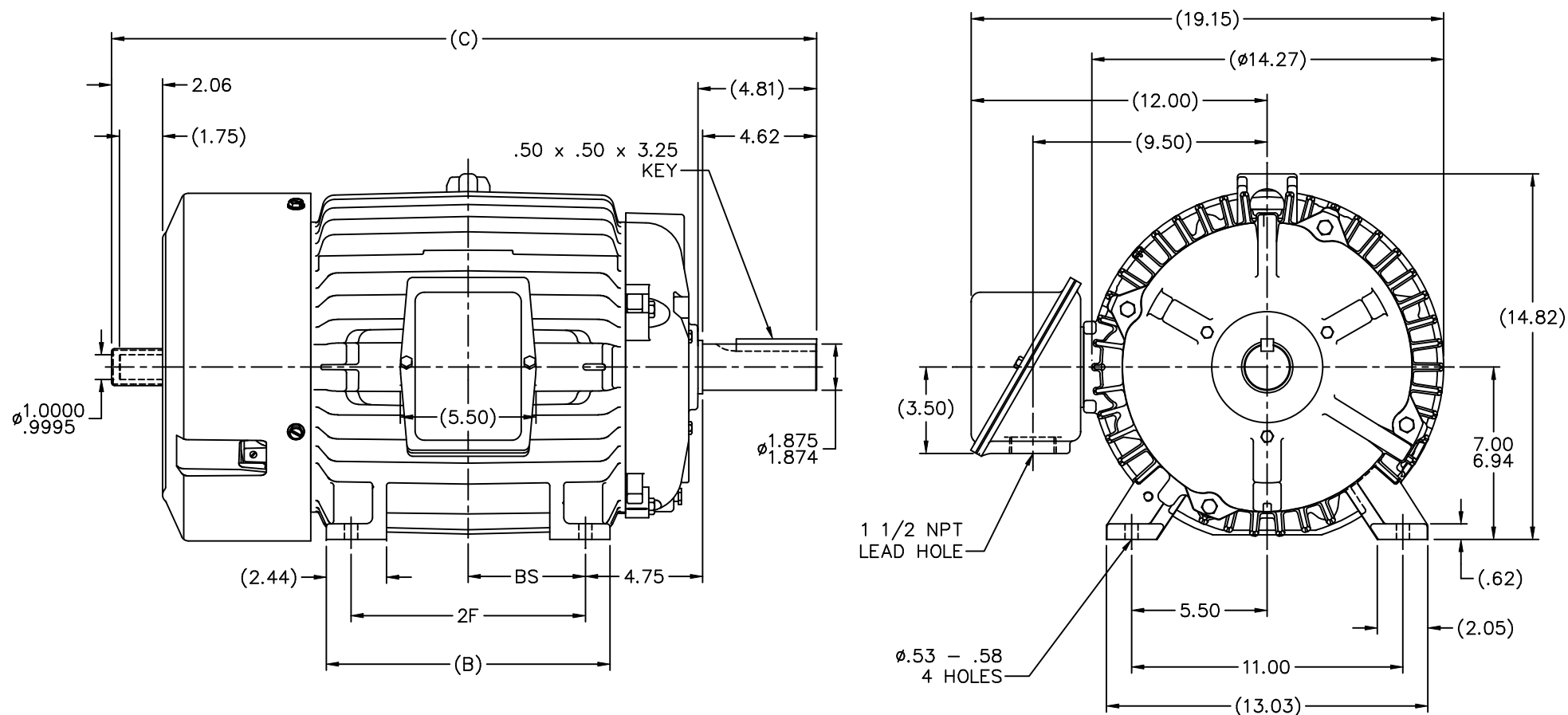
**Nameplate Specifications**

Phase	3	Output HP	25 Hp
Output KW	18.7 kW	Voltage	208 V
Speed	1765 rpm	Service Factor	1
Frame	284T	Enclosure	Totally Enclosed Fan Cooled
Thermal Protection	Thermostat	Efficiency	91.7 %
Ambient Temperature	40 °C	Frequency	60 Hz
Current	69.5 A	Power Factor	82
Duty	Continuous	Insulation Class	H
Design Code	B	KVA Code	G
Drive End Bearing Size	311	Opp Drive End Bearing Size	210
UL	Recognized	CSA	Y
CE	Y	IP Code	54
Number of Speeds	1		

**Technical Specifications**

Electrical Type	Squirrel Cage Inverter Duty	Starting Method	Inverter Only
Poles	4	Rotation	Reversible
Resistance Main	.325 Ohms	Mounting	Rigid Base
Motor Orientation	Horizontal	Drive End Bearing	Ball
Opp Drive End Bearing	Ball	Frame Material	Cast Iron
Shaft Type	T	Assembly/Box Mounting	F1/F2 CAPABLE
Outline Drawing	B-SS311828-1275	Connection Drawing	A-EE7300DC


This is an uncontrolled document once printed or downloaded and is subject to change without notice. Date Created:09/24/2024



## NOTES:

1. CONDUIT BOX CAN BE ROTATED IN 90° STEPS.
2. CONDUIT BOX CAN BE MOUNTED ON OPPOSITE SIDE BY REMOVING BRACKETS AND TURNING FRAME 180°.
3. NAMEPLATES TO BE READ FROM CONDUIT BOX SIDE OF MOTOR.

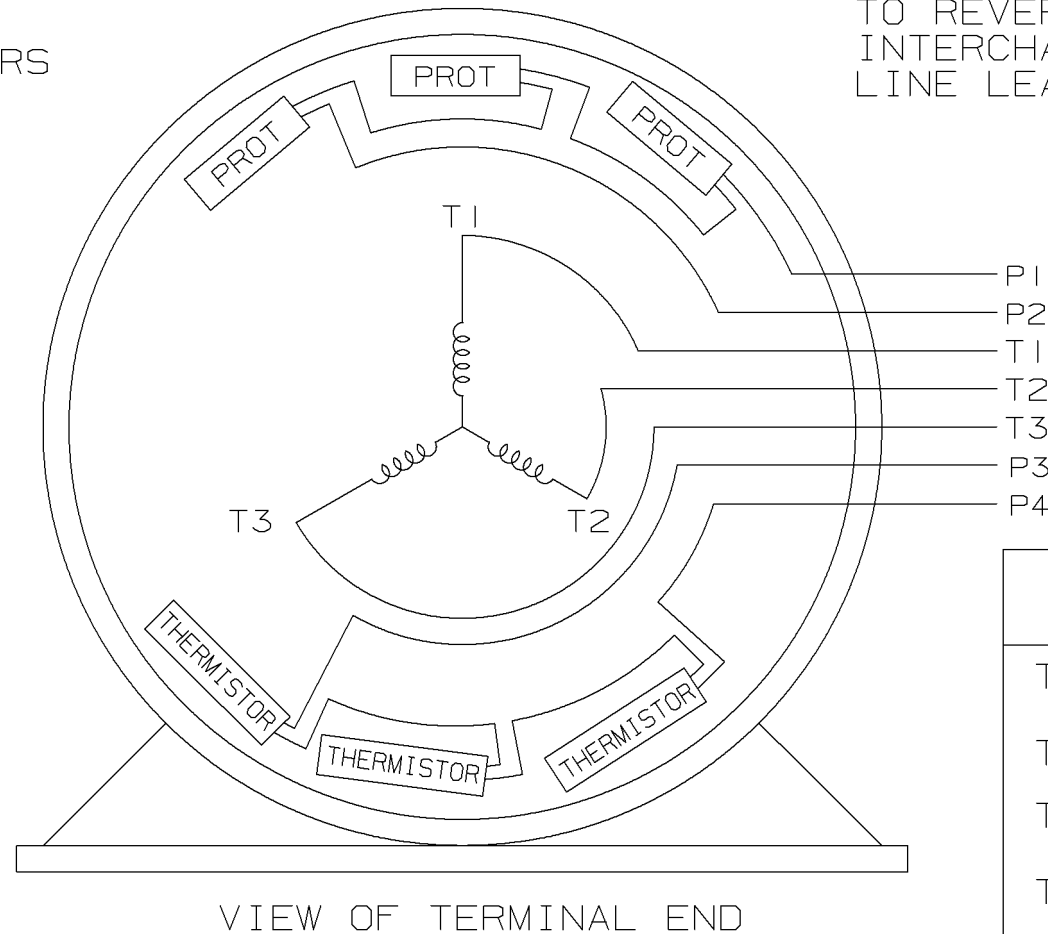
DASH	FRAME	B	C	2F	BS
1275	284T	11.50	28.58	9.50	4.75
1425	286T	13.00	30.08	11.00	5.50

			TOLERANCES UNLESS SPECIFIED		 <b>REGAL-BELOIT CORPORATION</b>	DRAWN RJW 01-31-2006		
			DEC.	INCHES		CHK	ML	01-31-2006
			.X	±.1		APPD	BW	02-01-2006
			.XX	±.03		SCALE 1=4		
			.XXX	±.005		REF		
			.XXXX	±.0005		FMF MU70802		
NO.	REVISION	BY & DATE	CHK	ANG	±7°30"	FINISH	PREV	
THIS DRAWING IN DESIGN AND DETAIL IS OUR PROPERTY AND MUST NOT BE USED EXCEPT IN CONNECTION WITH OUR WORK ALL RIGHTS OF DESIGN AND INVENTION ARE RESERVED THIS IS AN ELECTRONICALLY GENERATED DOCUMENT - DO NOT SCALE THIS PRINT			RFP	02-01-2006	CAD FILE	SS311828	SIZE	DRAWING NO. PAGE OF REV.
			DIST	LB				B SS311828

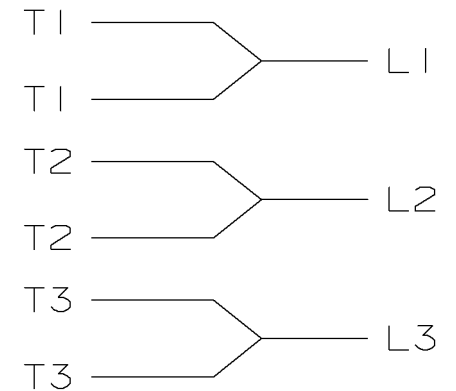
P1 AND P2 PROTECTORS  
TO VOLTAGE CONTROL

P3 AND P4 ARE  
THERMISTOR LEADS


TO REVERSE ROTATION:  
INTERCHANGE ANY TWO  
LINE LEAD CONNECTIONS.



IF MOTOR OR GEN.  
HAS 6 LEADS



A-9806 DECAL

				<div>✓</div> MAX. SURFACE ROUGHNESS UNLESS NOTED OTHERWISE	UNLESS OTHERWISE SPECIFIED DIMENSIONS ARE IN INCHES TOL. ON XX±.02    XXX±.005    XXXX±.0005    ANGLES± 7°30"					
				MATL SPEC				DRAWN BY SMC	08-22-1992	
				FINISH				CHKD BY ML	08-22-1992	
I	08-24-1992	NEW DRAWING	SMC	REFERENCE DRW.	WAUSAU, WISCONSIN 54401				APPD BY TB	08-22-1992
REV	DATE	CHANGE		NAME	PART NAME CONNECTION DIAGRAM SINGLE VOLT - 3Ø MOTOR					DRWG NO A - EE7300DC
		SHOP BOOK	PURCHASED	DISTRIBUTION - WA - LB - WP - LM - BR			CADD FILE NO.	EE7300DC		

SHOP BOOK

PURCHASED

DISTRIBUTION - WA - LB - WP - LM - BR

CADD FILE NO.

EE7300DC